



Distributori miniaturizzati COMPA 2

- Ingombro ridotto: corpo 15 mm
- Sistema a spola originale Univer riconosciuto negli anni dal mercato
- Ampia gamma di attuatori e azionamenti manuali da quadro originali Univer



Fluido	aria filtrata 10 µm
Temperatura ambiente	-10 ÷ +45 °C
Temperatura fluido	-20 ÷ +50 °C
Sistema di commutazione	spola
Vie/Posizioni	5/2
Pressione	max 10 bar
Comando	manuale, meccanico
Ritorno	molla meccanica
Conessioni	M5, per sottobase
Diametro nominale	2 mm
Portata nominale	150 NI/min
Corpo valvola	zama
Guarnizioni	NBR
Operatori	tecopolimero
Spola	alluminio
Elettropilota	serie A
Bobine	U05 = 2 W (DC) 2,3 VA (AC)
Tensione	24 V DC - 12 V DC - 24 V AC - 110 V AC - 230 V AC (solo versione con connessione elettrica esterna)
Grado di protezione	IP65
Comando manuale	a pulsante incassato 1 posizione



Norma di Riferimento

II 2G Ex h IICT5 Gb



II 2D Ex h IICT100°C Db



II 3 GD c nA II T5 -10 °C ≤ Ta ≤ 45 °C IP65

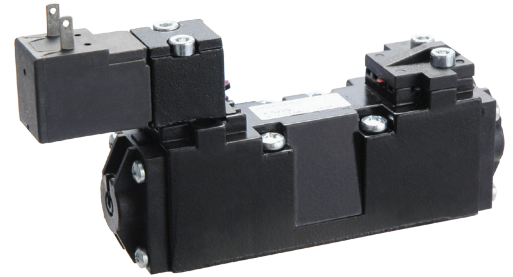


Tabella dei codici di ordinazione

- C.C. = centri chiusi
- O.C. = centri aperti
- P.C. = centri in pressione

Serie

E

E Distributori miniaturizzati COMPA 2

Tipologia

0 2

- 02 Montaggio su base 5/2
- 04 Corpo filettato M5 5/2
- 05 Montaggio su base 5/3 C.C.
- 06 Montaggio su base 5/3 O.C.
- 07 Montaggio su base 5/3 P.C.
- 08 Corpo filettato M5 5/3 C.C.
- 09 Corpo filettato M5 5/3 O.C.
- 10 Corpo filettato M5 5/3 P.C.

Comando 14

2

- 2 Elettrico amplificato DC
- 4 Pneumatico amplificato
- 7 Elettrico amplificato DC/AC

Ritorno 12

2

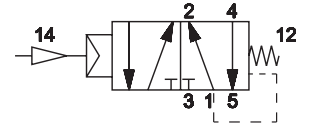
- 0 Molla pneumomeccanica
- 2 Elettrico amplificato DC
- 4 Pneumatico amplificato
- 7 Elettrico amplificato DC/AC

IMPULSO PNEUMATICO
SINGOLO IMPULSO PNEUMATICO



E-0240

5/2

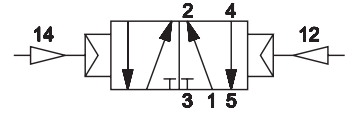


IMPULSO PNEUMATICO BISTABILE



E-0244

5/2

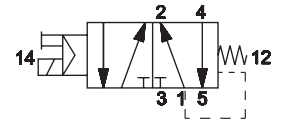


IMPULSO ELETTRICO
SINGOLO IMPULSO PNEUMATICO



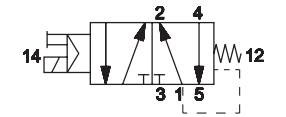
E-0220

5/2



E-0270

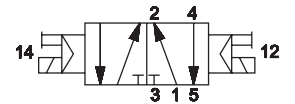
5/2



IMPULSO ELETTRICO BISTABILE

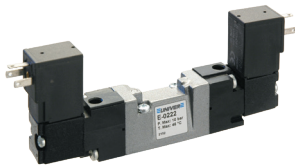
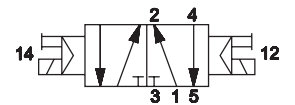
E-0222

5/2



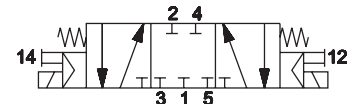
E-0277

5/2



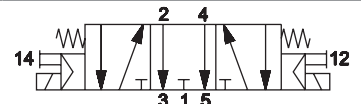
E-0522

5/3 C.C.



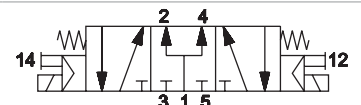
E-0622

5/3 O.C.



E-0722

5/3 C.P.



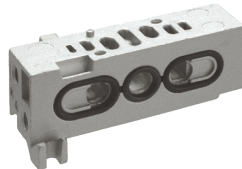
C.C. = centri chiusi O.C. = centri aperti P.C. = centri in pressione

PIASTRA D'ENTRATA



E-4500

SOTTOBASE MANIFOLD ATTACCHI FILETTATI



E-4500

PIASTRA CHIUSURA POSTO VALVOLA



E-4600

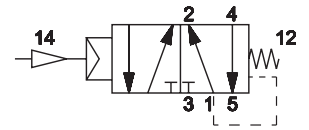
IMPULSO PNEUMATICO
SINGOLO IMPULSO PNEUMATICO



E-0440

5/2

M5



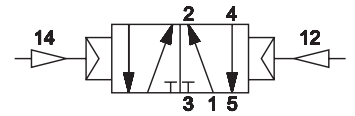
IMPULSO PNEUMATICO BISTABILE



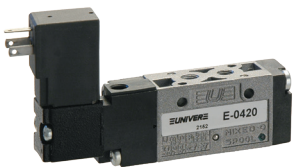
E-0444

5/2

M5



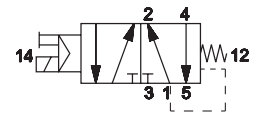
IMPULSO ELETTRICO
SINGOLO IMPULSO ELETTRICO



E-0420

5/2

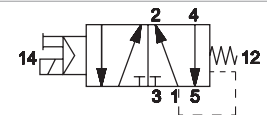
M5



E-0470

5/2

M5



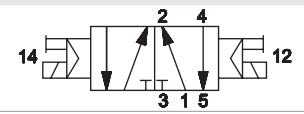
IMPULSO ELETTRICO BISTABILE 5/2



E-0422

5/2

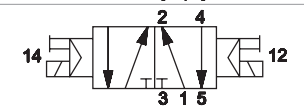
M5



E-0477

5/2

M5



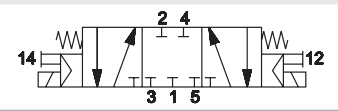
IMPULSO ELETTRICO BISTABILE 5/3



E-0822

5/3 C.C.

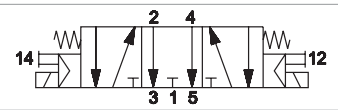
M5



E-0922

5/3 O.C.

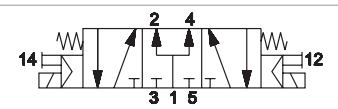
M5



E-1022

5/3 P.C.

M5



O.C. = centri aperti C.C. = centri chiusi P.C. = centri in pressione

SERIE E - DISTRIBUTORI MINIATURIZZATI COMPA 2

BOBINA U05 CON CONNETTORE INTEGRATO A 90° ALTO



DD-351

24V DC

BOBINA U05 CON CONNETTORE INTEGRATO A 90° BASSO



DD-151

24V DC

BOBINA U05 CON CONNETTORE INTEGRATO IN LINEA



DD-551

24V DC

BOBINA U05 CON CAVI VOLANTI (LUNGHEZZA 300 MM)



DD-051L030

24V DC

DD-052L030

24V DC

BOBINA U05 15 MM FASTON



DD-013

DC

AC

DD-040

-

230

DD-041

-

24

DD-042

12

-

DD-050

12

-

DD-051

-

48

DD-052

24

-

DD-060

24

-

DD-070

-

110

230

CONNETTORE 15 MM



AM-5109

CONNETTORE MINIATURIZZATO SENZA FILI



D-500

CONNETTORE MINIATURIZZATO CON CAVETTI VOLANTI



D-530-30

D-530-50

D-530-200

CONNETTORE MINIATURIZZATO CON CAVO



D-535-30

D-535-50

D-535-200

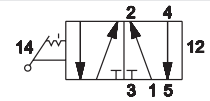
IMPULSO MECCANICO E MANUALE
VALVOLA A LEVA BISTABILE



E-15422G

5/2

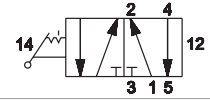
M5



E-15422N

5/2

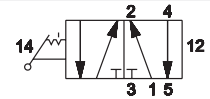
M5



E-15422R

5/2

M5



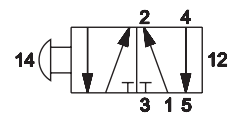
VALVOLA TIRETTO BISTABILE



E-15420

5/2

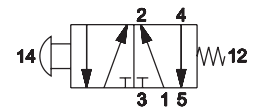
M5



E-15420A

5/2

M5



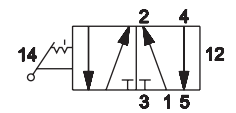
VALVOLA PUNTALE A SFERA



E-15402A

5/2

M5



IMPULSO MECCANICO E MANUALE

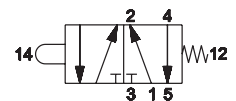
VALVOLA PUNTALE A SFERA PER AZIONAMENTO MECCANICO A VITE



E-15403A

5/2

M5



AI-3550



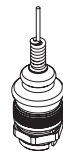
AI-3551



AI-3560



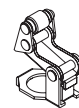
AI-3562



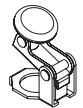
AI-3563



AI-3570



AI-3571



AI-3572



AI-3511 ■

AI-3512 ■

AI-3513 ■



AI-3514 ■

AI-3516 ■

AI-3514D ■

AI-3516D ■



AI-3515 ■

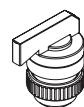
AI-3517 ■

AI-3519 ■



AI-3520 ■

AI-3521 ■

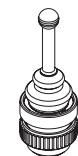


AI-3522 ■

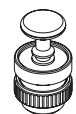
AI-3523 ■



AI-3524 ■



AI-3525 ■



AI-3526 ■

Le elettrovalvole sono fornite senza bobina e connettore

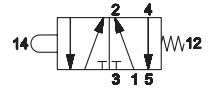
IMPULSO MECCANICO E MANUALE
VALVOLA PUNTALE A SFERA PER AZIONAMENTO MECCANICO DA QUADRO



E-15403A

5/2

M5



AI-3511Q ■
AI-3512Q ■
AI-3513Q ■



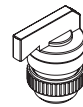
AI-3514Q ■
AI-3516Q ■
AI-3514QD ■
AI-3516QD ■



AI-3515Q ■
AI-3517Q ■
AI-3519Q ■



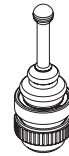
AI-3520Q ■
AI-3521Q ■



AI-3522Q ■
AI-3523Q ■



AI-3524Q ■



AI-3525Q ■



AI-3526Q ■