

## Raccordi automatici in tecnopolimero **HT**



# HT

## Raccordi automatici in tecnopolimero

I raccordi ad innesto rapido serie HT sono il prodotto ideale per chi cerca eccellenti performance, dimensioni contenute ed estrema leggerezza grazie al materiale plastico di cui sono composti.

Questi raccordi rapidi per aria compressa presentano un sistema di aggancio del tubo mediante un anello di acciaio inox oltre ad una filettatura speciale con OR che assicura il minimo ingombro della chiave esagonale esterna ed una tenuta sicura su sedi filettate imperfette.

Viste le loro dimensioni compatte ed elevate performance sono l'ideale per qualsiasi tipo di applicazione pneumatica industriale.



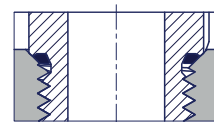
### CARATTERISTICHE

<b>Temperatura</b>	-10 ÷ 80 °C
<b>Fluido</b>	aria compressa, vuoto
<b>Pressione di lavoro</b>	Max 18 bar
<b>Applicazioni</b>	circuiti pneumatici
<b>Tubi di collegamento consigliati</b>	poliammide PA 10.12, poliuretano Sh.A98 co-poliuretano Sh.55D
<b>Corpo</b>	tecnopolimero
<b>Elemento di fissaggio</b>	ottone nichelato con O-ring in NBR nella versione cilindrica (standard)
<b>Pinza di aggraffaggio</b>	acciaio inox
<b>Anello di sgancio</b>	tecnopolimero

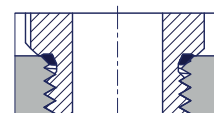
### CARATTERISTICHE COSTRUTTIVE

Il sistema di tenuta con O-RING che caratterizza la serie di raccordi HT assicura il minimo ingombro della chiave esagonale esterna e garantisce applicazioni sicure su sedi filettate imperfette con:

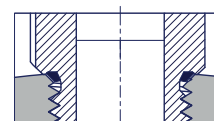
#### 1. Smusso grande d'invito del filetto femmina



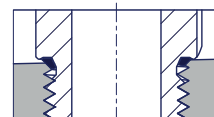
#### 2. Smusso piccolo d'invito del filetto femmina



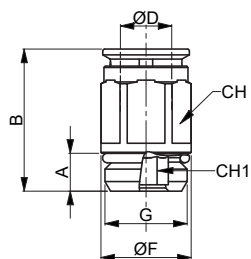
#### 3. Filettatura su superfici curve



#### 4. Filettatura non perpendicolare al piano di posa

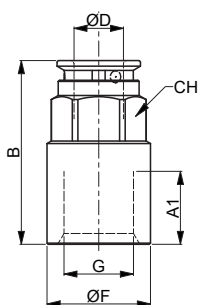


## HT04 | Diritto maschio cilindrico



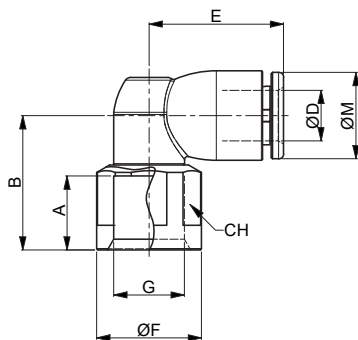
Codice	A	B	CH	CH1	ØD	ØF	G
HT0404M5	4	20	9	2,5	4	9,9	M5
HT0404M7	5	19	9	2,5	4	9,9	M7x1
HT040418	5	17	10	3	4	11	G1/8
HT040414	6	17	10	3	4	14	G1/4
HT0406M5	4	22	11	2,5	6	12	M5
HT0406M7	5	21	11	3	6	12	M7x1
HT040618	5	19	11	4	6	12	G1/8
HT040614	6	18	11	4	6	14	G1/4
HT0408M10	5	23	13	5	8	15	M10x1
HT040818	5	23	13	5	8	14	G1/8
HT040814	6	22	13	6	8	14	G1/4
HT040838	8	21	13	6	8	18	G3/8
HT041014	6	27	16	7	10	17	G1/4
HT041038	8	26	16	8	10	18	G3/8
HT041012	9	25	16	8	10	23	G1/2
HT041214	6	30	19	7	12	21	G1/4
HT041238	8	30	19	9	12	21	G3/8
HT041212	9	30	19	10	12	22	G1/2

## HT07 | Diritto femmina



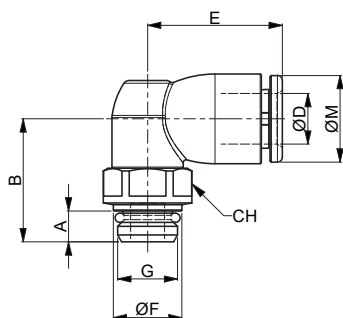
Codice	A1	B	CH	ØD	ØF	G
HT070418	10	24	10	4	13	G1/8
HT070414	12	26	10	4	17	G1/4
HT070618	10	26	12	6	13	G1/8
HT070614	12	28	12	6	17	G1/4
HT070818	10	27	14	8	15	G1/8
HT070814	12	29	14	8	17	G1/4
HT070838	13	30	14	8	21	G3/8
HT071014	12	30	16	10	17	G1/4
HT071038	13	31	16	10	21	G3/8

## HT08 | Gomito girevole femmina



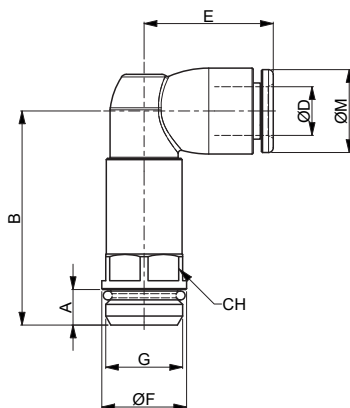
Codice	A	B	CH	ØD	E	ØF	G	ØM
HT080418	10	18	12	4	16	13	G1/8	10
HT080414	12	20	16	4	16	17	G1/4	10
HT080618	10	19	12	6	18,5	13	G1/8	12,6
HT080614	12	21	16	6	18,5	17	G1/4	12,6
HT080818	10	20	12	8	20,5	13	G1/8	14,5
HT080814	12	22	16	8	20,5	17	G1/4	14,5
HT080838	13	23	19	8	20,5	21	G3/8	14,5
HT081014	12	25	16	10	26	17	G1/4	16,3
HT081038	13	26	19	10	26	21	G3/8	16,3

## HT10B | Gomito basso



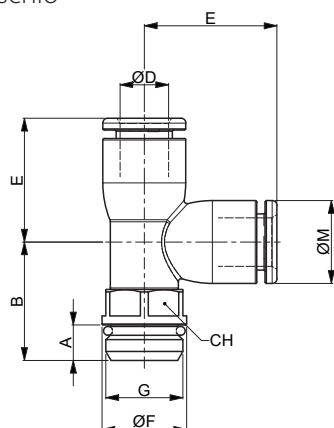
Codice	A	B	CH	ØD	E	ØF	G	ØM
HT10B04M5	4	14	8	4	16	9,9	M5	10
HT10B04M7	5	15,5	9	4	16	9,9	M7x1	10
HT10B0418	5	16,5	10	4	16	11	G1/8	10
HT10B0414	6	18	10	4	16	14,3	G1/4	10
HT10B06M5	4	15	9	6	18,5	9,9	M5	12,6
HT10B06M7	5	16,5	9	6	18,5	9,9	M7x1	12,6
HT10B0618	5	17	11	6	18,5	11,7	G1/8	12,6
HT10B0614	6	19	11	6	18,5	14,3	G1/4	12,6
HT10B0818	5	20	13	8	20,5	14,3	G1/8	14,5
HT10B0814	6	20	13	8	20,5	14,3	G1/4	14,5
HT10B0838	8	23	13	8	20,5	18	G3/8	14,5
HT10B0812	9	24,3	13	8	20,5	22	G1/2	14,5
HT10B1014	6	23	16	10	26	17	G1/4	16,3
HT10B1038	8	25,5	18	10	26	20	G3/8	16,3
HT10B1012	9	27	22	10	26	24	G1/2	16,3
HT10B1214	6	25,5	19	12	29,5	21	G1/4	19
HT10B1238	8	27,5	19	12	29,5	21	G3/8	19
HT10B1212	9	29,5	22	12	29,5	24	G1/2	19

## HT12B | Gomito girevole basso prolungato maschio



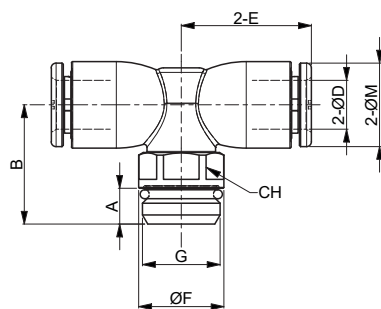
Codice	A	B	CH	ØD	E	ØF	G	ØM
HT12B0418	5	27	10	4	16	11	G1/8	10
HT12B0414	6	29	10	4	16	14,3	G1/4	10
HT12B0618	5	31	11	6	18,5	11,7	G1/8	12,6
HT12B0614	6	33	11	6	18,5	14,3	G1/4	12,6
HT12B0818	5	35,5	13	8	20,5	14,3	G1/8	14,5
HT12B0814	6	36	13	8	20,5	14,3	G1/4	14,5
HT12B0838	8	39	13	8	20,5	18	G3/8	14,5

## HT14B | T laterale basso maschio



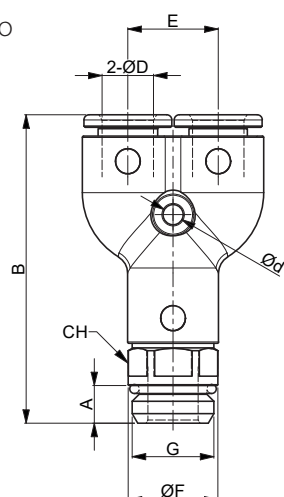
Codice	A	B	CH	ØD	E	ØF	G	ØM
HT14B04M5	4	14	8	4	16	9,9	M5	10
HT14B04M7	5	15,5	9	4	16	9,9	M7x1	10
HT14B0418	5	16,5	10	4	16	11	G1/8	10
HT14B0414	6	18	10	4	16	14,3	G1/4	10
HT14B06M5	4	15	9	6	18,5	9,9	M5	12,6
HT14B06M7	5	16,5	9	6	18,5	9,9	M7x1	12,6
HT14B0618	5	17	11	6	18,5	11,7	G1/8	12,6
HT14B0614	6	19	11	6	18,5	14,3	G1/4	12,6
HT14B0818	5	20	13	8	20,5	14,3	G1/8	14,5
HT14B0814	6	20	13	8	20,5	14,3	G1/4	14,5
HT14B0838	8	23	13	8	20,5	18	G3/8	14,5
HT14B1014	6	23	16	10	26	17	G1/4	16,3
HT14B1038	8	25,5	18	10	26	20	G3/8	16,3
HT14B1012	9	27	22	10	26	24	G1/2	16,3
HT14B1214	6	25,5	19	12	29,5	21	G1/4	19
HT14B1238	8	27,5	19	12	29,5	21	G3/8	19
HT14B1212	9	29,5	22	12	29,5	24	G1/2	19

## HT16B | T centrale basso maschio



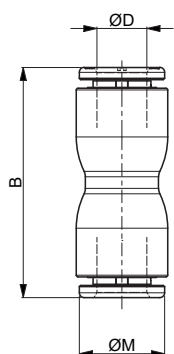
Codice	A	B	CH	ØD	E	ØF	G	ØM
HT16B04M5	4	14	8	4	16	9,9	M5	10
HT16B04M7	5	15,5	9	4	16	9,9	M7x1	10
HT16B0418	5	16,5	10	4	16	11	G1/8	10
HT16B0414	6	18	10	4	16	14,3	G1/4	10
HT16B06M5	4	15	9	6	18,5	9,9	M5	12,6
HT16B06M7	5	16,5	9	6	18,5	9,9	M7x1	12,6
HT16B0618	5	17	11	6	18,5	11,7	G1/8	12,6
HT16B0614	6	19	11	6	18,5	14,3	G1/4	12,6
HT16B0818	5	20	13	8	20,5	14,3	G1/8	14,5
HT16B0814	6	20	13	8	20,5	14,3	G1/4	14,5
HT16B0838	8	23	13	8	20,5	18	G3/8	14,5
HT16B1014	6	23	16	10	26	17	G1/4	16,3
HT16B1038	8	25,5	18	10	26	20	G3/8	16,3
HT16B1012	9	27	22	10	26	24	G1/2	16,3
HT16B1214	6	25,5	19	12	29,5	21	G1/4	19
HT16B1238	8	27,5	19	12	29,5	21	G3/8	19
HT16B1212	9	29,5	22	12	29,5	24	G1/2	19

## HT18 | Y maschio cilindrico



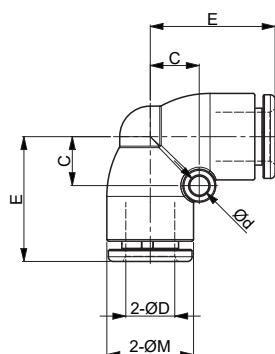
Codice	A	B	CH	ØD	Ød	E	ØF	G
HT1804M5	4	37	8	4	9,9	9,2	9,9	M5
HT180418	5	39	10	4	11	9,2	11	G1/8
HT180414	6	41	10	4	14	9,2	14,3	G1/4
HT180618	5	43	11	6	12	9,2	11,7	G1/8
HT180614	6	45	11	6	14	11	14,3	G1/4
HT180818	5	47	13	8	11	15	11	G1/8
HT180814	6	49	13	8	14	15	14,3	G1/4
HT180838	8	51	13	8	18	15	18	G3/8
HT181014	6	55	16	10	17	16	17	G1/4
HT181038	8	58	18	10	20	16	20	G3/8
HT181012	9	59	22	10	24	16	24	G1/2
HT181238	8	64	19	12	21	19	21	G3/8
HT181212	9	66	22	12	24	19	24	G1/2

## HT19 | Diritto intermedio



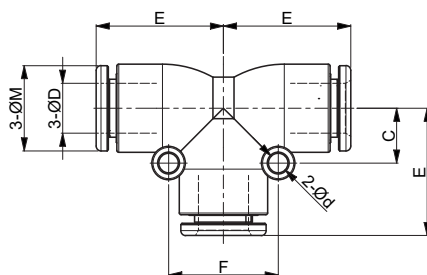
Codice	B	ØD	ØM
HT190400	26,5	4	9,9
HT190600	34,5	6	14
HT190800	36,5	8	16,3
HT191000	39	10	16,3
HT191200	45	12	19

## HT20 | L intermedio



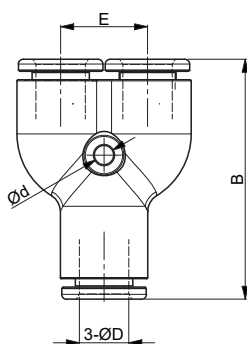
Codice	C	ØD	Ød	E	ØM
HT200400	5,7	4	2,7	15,5	9,9
HT200600	7,2	6	3,2	18	12,6
HT200800	8,2	8	3,2	20	14,5
HT201000	10	10	4,2	26	16,3
HT201200	11	12	4,2	29,5	19

## HT21 | T intermedio



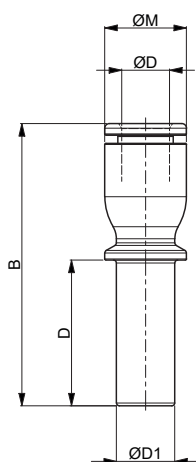
Codice	C	ØD	Ød	E	F	ØM
HT210400	6	4	2,7	15,5	12	9,9
HT210600	8	6	3,2	18	16	12,6
HT210800	9	8	3,2	20	18	14,5
HT211000	10	10	4,2	26	20	16,3
HT211200	11	12	4,2	29,5	22	19

## HT23 | Y intermedio



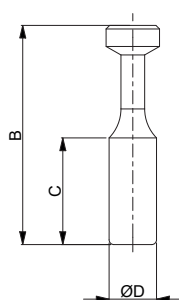
Codice	B	ØD	Ød	E
HT230400	31,5	4	3,2	9,2
HT230600	35,5	6	3,2	11,3
HT230800	39,5	8	3,2	14,5
HT231000	46	10	3,2	15,5
HT231200	52	12	3,2	18,5

## HT24 | Riduzione



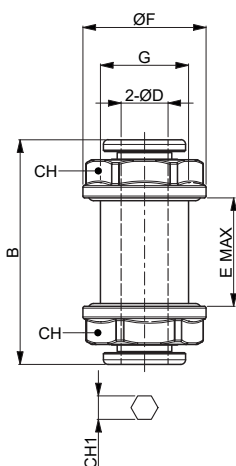
Codice	B	D	ØD	ØD1	ØM
HT240406	44	22	4	6	11
HT240408	46	25	4	8	14
HT240608	48	25	6	8	14
HT240610	45	25	6	10	14
HT240810	45	25	8	10	14
HT240812	47	27	8	12	17
HT241012	48	27	10	12	17

## HT26 | Tappo



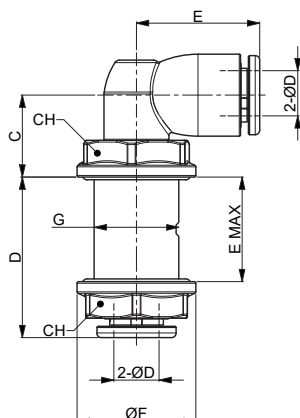
Codice	B	C	ØD
HT260400	28	15,5	4
HT260600	33	16	6
HT260800	37	18,5	8
HT261000	42,5	21	10
HT261200	43	23	12

## HT33 | Passaparete



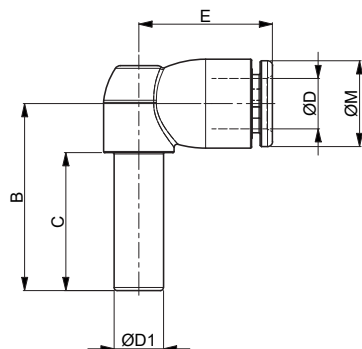
Codice	B	CH	CH1	ØD	E	ØF	G
HT330004	28	12	3,5	4	10	16	M10X1
HT330006	32	17	4	6	13	20	M14X1
HT330008	37	18	6	8	17	21	M15X1

## HT35 | Passaparete raccordo a gomito



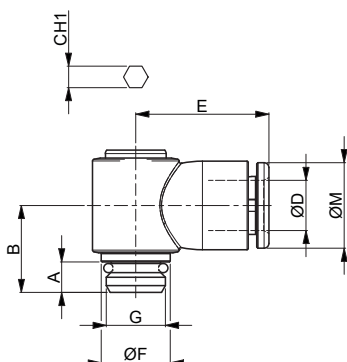
Codice	C	CH	D	ØD	E	ØF	G
HT350004	13	12	19	4	10	16	M10X1
HT350006	13	17	23	6	13	20	M14X1
HT350008	14	18	27	8	17	21	M15X1

## HT38 | Gomito innestabile



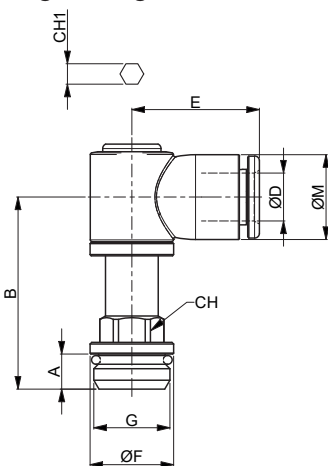
Codice	C	ØD	E	B	ØM	ØD1
HT380400	16	4	16	22	10	4
HT380600	20	6	18,5	27	12,6	6
HT380800	22	8	20,5	30	14,5	8
HT381000	25	10	26	36	16	10
HT381200	27	12	30	40	19	12

## HT41 | Gomito girevole cilindrico testa chiave incassata



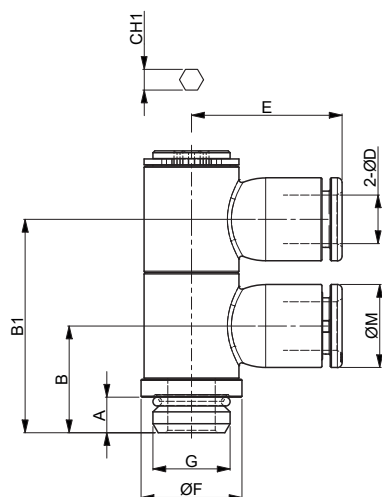
Codice	A	B	CH1	ØD	E	ØF	G	ØM
HT4104M5	4	13,5	2,5	4	18,5	9,5	M5	9,8
HT410418	5	15	4	4	19	14,3	G1/8	10,3
HT410414	6	13,5	4	4	19	14,3	G1/4	10,3
HT410618	5	15	4	6	20	14,3	G1/8	12,6
HT410614	6	13,5	4	6	20	14,3	G1/4	12,6
HT410818	5	15	4	8	21	14,3	G1/8	14,5
HT410814	6	13,5	4	8	21	14,3	G1/4	14,5

## HT41L | Raccordo girevole a L brugola lungo cilindro



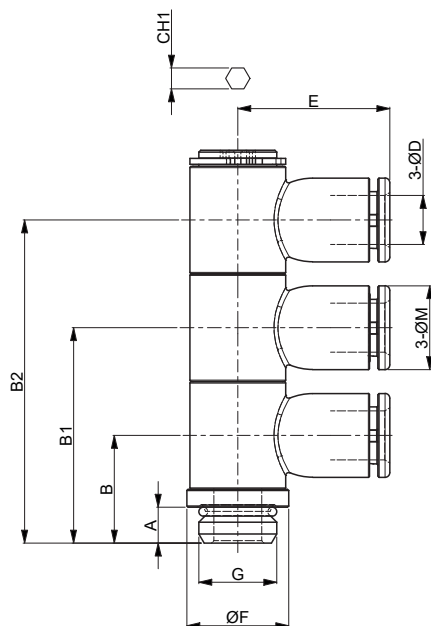
Codice	A	B	CH	CH1	ØD	E	ØF	G	ØM
HT41L0418	5	30,5	10	4	4	19	14,3	G1/8	10,3
HT41L0414	6	32	10	4	4	19	14,3	G1/4	10,3
HT41L0618	5	30,5	10	4	6	20	14,3	G1/8	12,6
HT41L0614	6	32	10	4	6	20	14,3	G1/4	12,6
HT41L0818	5	30,5	10	4	8	21	14,3	G1/8	14,5
HT41L0814	6	32	10	4	8	21	14,3	G1/4	14,5

## HT47 | Asta doppia anello singolo testa chiave incassata cilindrico



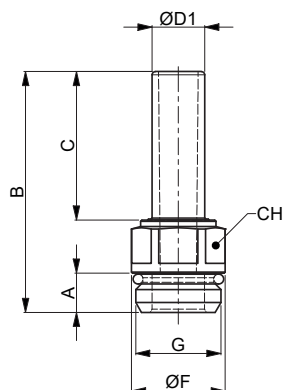
Codice	A	B	C	C1	CH	ØD	ØF	G	ØM
HT470418C4	19,8	5	15,4	31,5	4	4	14	G1/8	9
HT470414C4	19,8	6	16,4	32,5	4	4	14,5	G1/4	9
HT470618C4	21,6	5	15,4	31,5	4	6	14	G1/8	12,2
HT470614C4	21,6	6	16,4	32,5	4	6	14,5	G1/4	12,2
HT470614C5	23,1	6	18	36	5	6	17	G1/4	12,1
HT470638C5	23,1	7,8	20	38	5	6	19	G3/8	12,2
HT470814C5	25,4	6	18	36	5	8	17	G1/4	14
HT470838C5	25,4	7,8	20	38	5	8	19	G3/8	14

## HT48 | Asta tripla anello singolo testa chiave incassata cilindrico



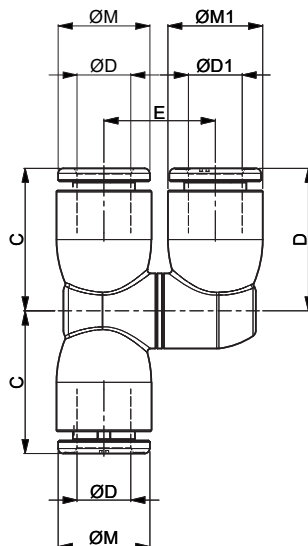
Codice	A	B	B1	B2	CH1	ØD	E	ØF	G	ØM
HT480418C4	5	15,4	31,5	47,6	4	4	19,8	14	G1/8	9
HT480414C4	6	16,4	32,5	48,6	4	4	19,8	14,5	G1/4	9
HT480618C4	5	15,4	31,5	47,6	4	6	21,6	14	G1/8	12,2
HT480614C4	6	16,4	32,5	48,6	4	6	21,6	14,5	G1/4	12,2
HT480614C5	6	18	36	54	5	6	23,1	16	G1/4	12,2
HT480638C5	7,8	20	38	56	5	6	23,1	19	G3/8	12,2
HT480814C5	6	18	36	54	5	8	25,4	16	G1/4	14
HT480838C5	7,8	20	38	56	5	8	25,4	19	G3/8	14

## HT51 | Adattatore a spina cilindrico



Codice	A	B	C	CH	ØD1	ØF	G
HT510418	5	26	16	10	4	11	G1/8
HT510618	5	30,5	20	11	6	11	G1/8
HT510614	6	31,5	20	11	6	14,3	G1/4
HT510818	5	37	22	13	8	11	G1/8
HT510814	6	38	22	13	8	14,3	G1/4
HT510838	8	40	22	13	8	18	G3/8
HT511014	6	42	25	14	10	16	G1/4
HT511038	8	39	25	16	10	18	G3/8
HT511238	8	47	27	17	12	19	G3/8
HT511212	9	44	27	20	12	22	G1/2

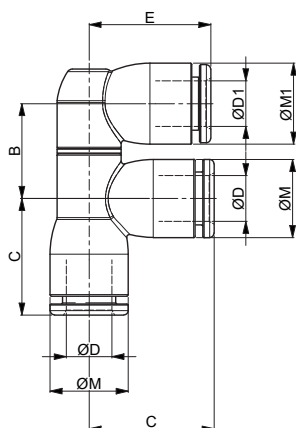
## HT60 | Intermedio T centrale girevole



Codice	C	D	ØD	ØD1	E	ØM	ØM1
HT600404	16	16	4	4	13	10	10
HT600406	16	18,5	4	6	14	10	12,6
HT600408	16	20,5	4	8	15	10	14,5
HT600604	18,5	16	6	4	14	12,6	10
HT600606	18,5	18,5	6	6	15	12,6	12,6
HT600608	18,5	20,5	6	8	16	12,6	14,5
HT600610	18,5	26	6	10	18	12,6	16,3
HT600804	20,5	16	8	4	15	14,5	10
HT600806	20,5	18,5	8	6	16	14,5	12,6
HT600808	20,5	20,5	8	8	17	14,5	14,5
HT600810	20,5	26	8	10	19	14,5	16,3
HT601006	26	18,5	10	6	18	16,3	12,6
HT601008	26	20,5	10	8	19	16,3	14,5
HT601010	26	26	10	10	22	16,3	16,3

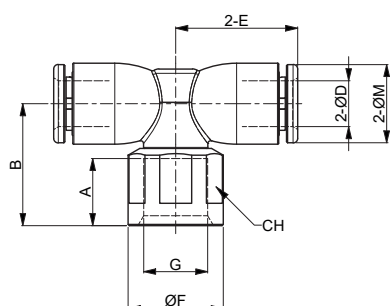


## HT61 | Raccordo intermedio T laterale girevole



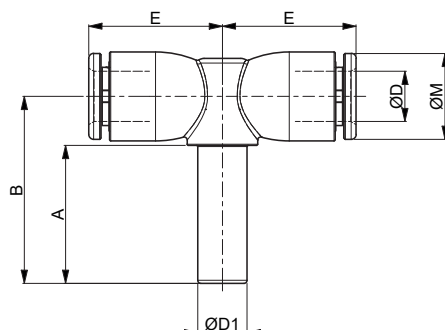
Codice	B	C	ØD	ØD1	E	ØM	ØM1
HT610404	13	16	4	4	16	10	10
HT610406	14	16	4	6	18,5	10	12,6
HT610408	15	16	4	8	20,5	10	14,5
HT610604	14	18,5	6	4	16	12,6	10
HT610606	15	18,5	6	6	18,5	12,6	12,6
HT610608	16	18,5	6	8	20,5	12,6	14,5
HT610610	18	18,5	6	10	26	12,6	16,3
HT610804	15	20,5	8	4	16	14,5	10
HT610806	16	20,5	8	6	18,5	14,5	12,6
HT610808	17	20,5	8	8	20,5	14,5	14,5
HT610810	19	20,5	8	10	26	14,5	16,3
HT611006	18	26	10	6	18,5	16,3	12,6
HT611008	19	26	10	8	20,5	16,3	14,5
HT611010	22	26	10	10	26	16,3	16,3

## HT62 | Raccordo girevole T femmina



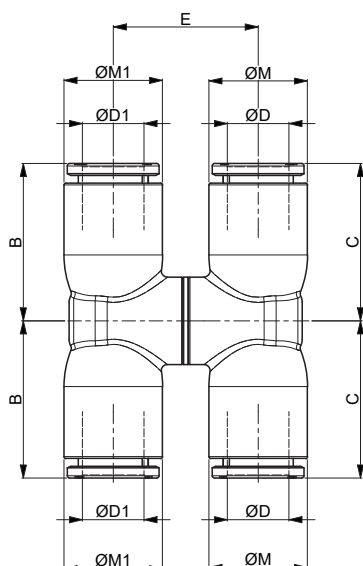
Codice	A	B	CH	ØD	E	ØF	G	ØM
HT620418	10	18	12	4	16	13	G1/8	10
HT620414	12	20	16	4	16	17	G1/4	10
HT620618	10	19	12	6	18,5	13	G1/8	12,6
HT620614	12	21	16	6	18,5	17	G1/4	12,6
HT620818	10	20	12	8	20,5	13	G1/8	14,5
HT620814	12	22	16	8	20,5	17	G1/4	14,5
HT620838	13	23	19	8	20,5	21	G3/8	14,5
HT621014	12	25	16	10	26	17	G1/4	16,3
HT621038	13	26	19	10	26	21	G3/8	16,3

## HT63 | Raccordo T centrale



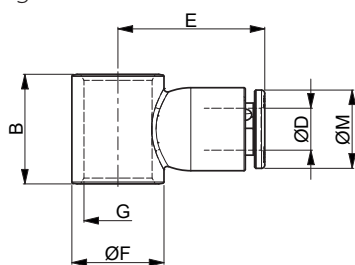
Codice	A	B	ØD	ØD1	E	ØM
HT630404	16	22	4	4	16	10
HT630606	20	27	6	6	18,5	12,6
HT630808	22	30	8	8	20,5	14,5
HT631010	25	36	10	10	26	16
HT631212	27	40	12	12	30	19

## HT64 | Raccordo intermedio X girevole



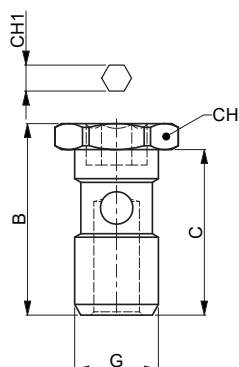
Codice	B	C	ØD	ØD1	E	ØM	ØM1
HT640404	16	16	4	4	13	10	10
HT640604	16	18,5	6	4	14	12,6	10
HT640606	18,5	18,5	6	6	15	12,6	12,6
HT640804	16	20,5	8	4	15	14,5	10
HT640806	18,5	20,5	8	6	16	14,5	12,6
HT640808	20,5	20,5	8	8	17	14,5	14,5
HT641006	18,5	26	10	6	18	16,3	12,6
HT641008	20,5	26	10	8	19	16,3	14,5
HT641010	26	26	10	10	22	16	16

## HT40 | Testina per tirante con brugola



Codice	B	ØD	E	ØF	G	ØM
HT4004M5	10,5	4	18,5	9,5	M5	9,8
HT400418	15,5	4	19	14,3	G1/8	10,3
HT400414	17,5	4	20,5	17,3	G1/4	10,3
HT400618	15,5	6	20	14,3	G1/8	12,6
HT400614	17,5	6	21,5	17,3	G1/4	12,6
HT400818	15,5	8	21	14,3	G1/8	14,5
HT400814	17,5	8	22,5	17,3	G1/4	14,5

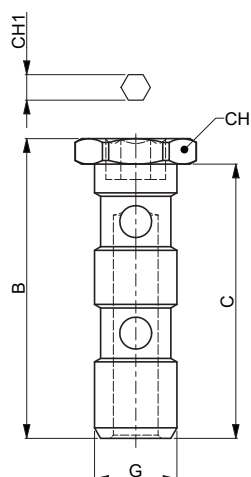
## HT42 | Tirante 1 posizione con brugola



Codice	B	C	CH	CH1	G
HT4200M5	18,5	15	8	4	M5
HT420018	25,5	21,5	14	6	G1/8
HT420014	29,5	25,5	17	8	G1/4

Abbinare alla testina orientabile ad L HT40

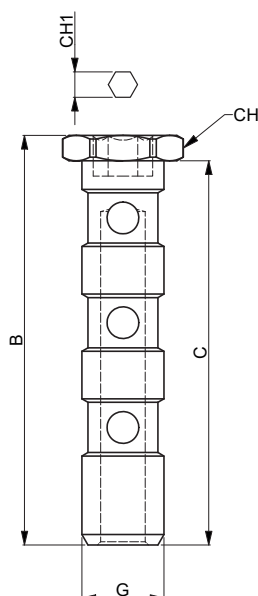
## HT43 | Tirante 2 posizioni con brugola



Codice	B	C	CH	CH1	G
HT4300M5	28,5	25	8	4	M5
HT430018	41	37	14	6	G1/8
HT430014	47	43	17	8	G1/4

Abbinare alla testina orientabile ad L HT40

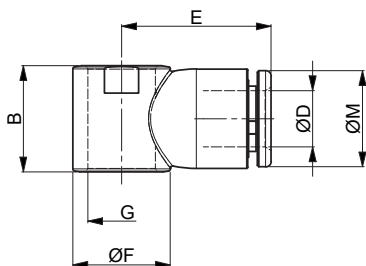
## HT44 | Tirante 3 posizioni con brugola



Codice	B	C	CH	CH1	G
HT440018	56,5	52,5	14	6	G1/8
HT440014	64,5	64,5	17	8	G1/4

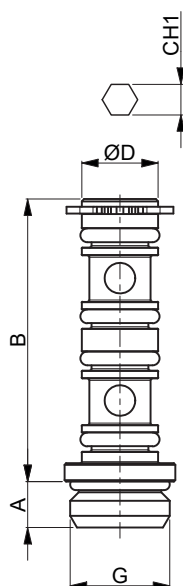
Abbinare alla testina orientabile ad L HT40

## HT50 | Testina orientabile a L per asta



Codice	B	ØD	E	ØF	G	ØM
HT501004	16,1	4	19,8	13,5	10	9
HT501006	16,1	6	21,6	13,5	10	12,2
HT501306	18	6	23,1	16	13	12,2
HT501308	18	8	25,4	16	13	14

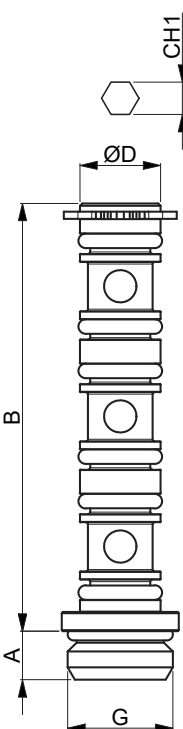
## HT53 | Asta 2 posizioni per raccordo girevole



Codice	A	B	CH1	ØD	G
HT531018	5	37	4	10	G1/8
HT531014	6	37	4	10	G1/4
HT531314	6	42	5	13	G1/4
HT531338	8	42	5	13	G3/8

Abbinare alla testina orientabile ad L HT50

## HT54 | Asta 3 posizioni per raccordo girevole



Codice	A	B	CH1	ØD	G
HT541018	5	53	4	10	G1/8
HT541014	6	53	5	10	G1/4
HT541314	6	60	5	13	G1/4
HT541338	8	60	5	13	G3/8

Abbinare alla testina orientabile ad L HT50



Industrial Automation

## UNIVER S.p.A.

### Sede centrale

I - 20128 **Milano**  
Via Eraclito, 31  
Tel. +39 02 25298.1  
Fax +39 02 2575254  
info@univer-group.com  
www.univer-group.com

## UNIVER SERVICE S.r.l.

### Sede centrale

I - 20128 **Milano**  
Via Empedocle, 20  
Tel. +39 02 25298.1  
Fax +39 02 25298370  
universervice@universervice.it  
www.universervice.it

### Unità operative

#### LOMBARDIA

I - 20099 - Sesto San Giovanni **Milano**  
Via G. di Vittorio, 307/20  
Tel. +39 02 26261304  
Fax +39 02 24300375  
universervice@universervice.it

#### PIEMONTE/LIGURIA/VALLE D'AOSTA

I - 10071 Borgaro Torinese **Torino**  
Via Veneto, 18  
Tel. +39 011 4501871  
Fax +39 011 4502898  
torino@universervice.it

#### VENETO/FRIULI VENEZIA-GIULIA TRENTINO-ALTO ADIGE

I - 30030 Vigonovo **Venezia**  
Via Prima strada 16/A - Loc. Galta  
Tel. +39 049 9834140  
Fax +39 049 9833972  
vigonovo@universervice.it

#### EMILIA ROMAGNA - CENTRO/SUD

I - 40069 Zola Predosa **Bologna**  
Via Guido Rossa, 21  
Tel. +39 051 753907  
Fax +39 051 6184751  
bologna@universervice.it

#### UNIVER DO BRASIL S/A

**BRASILE** - 13474-764  
Americana São Paulo - SP  
Rua do Polyester, 29  
Distrito Industrial Abdo Najar  
Tel. +55 19 3113-9400  
Fax +55 19 3113-9405  
atendimento@univer.com.br

#### UNIVER CHINA

**CINA** - Shanghai  
399 Fu Te North Road,  
Free Zone, Pudong  
info@univer-china.com

#### UNIVER FRANCE S.a.s.

**FRANCIA** - 68000  
**Colmar**  
1, rue Denis Papin  
Tel. +33 3 89210900  
Fax +33 3 89216850  
info@univer-france.fr

#### UNIVER G.m.b.H.

**GERMANIA** - D-65428  
**Rüsselsheim**  
Eisenstraße 51  
Tel. +49 6142 408320  
Fax +49 6142 4083290  
info@univer-gmbh.de

#### UNIVER NORTH AMERICA

**USA** - 48312  
Sterling Heights - **Michigan**  
6620 Cobb Drive  
Tel. +1 248 299 0525  
Fax +1 248 299 0528  
info@univer-group.us

#### UNIVER POLSKA Sp. z o.o.

**POLONIA** - 25-663  
**Kielce**  
ul. K. Olszewskiego 21E  
Tel. +48 41 278 72 53  
Fax +48 41 278 72 54  
univer@univer-group.pl

#### UNIVER S.L.

**SPAGNA** - 08210  
Barbera Del Valles **Barcelona**  
Ronda Industria, 26 - 28  
Tel. +34 93 7297360  
Fax +34 93 7297380  
univer@univerweb.com

#### Distributori nel mondo:

Rivolgersi all'ufficio commerciale o  
visitare il sito [www.univer-group.com](http://www.univer-group.com)



[www.univer-group.com](http://www.univer-group.com)