

# LSP32

Pneumatic pin clamp



L	S	P	3	2	J	U	3	0	0	0	0	0
1	2	3	4	5	6	7	8					

<b>1 Series</b>	<b>2 Version</b>	<b>3 Size</b>
-----------------	------------------	---------------

LS = Pin clamp

P = Pneumatic-standard

32 = Ø 32 mm

<b>4 Model</b>	<b>5 Sensor</b>	<b>6 Pin diameter</b>
----------------	-----------------	-----------------------

J = With compensation

U = Electronic sensor with  
M12 swivel connector

N = No sensor  
(with protection plate)

1 ≤ Ø 19 mm

2 = Ø 20 mm

3 = Ø 25 mm

4 = Ø 30 mm

5 = Ø 35 mm

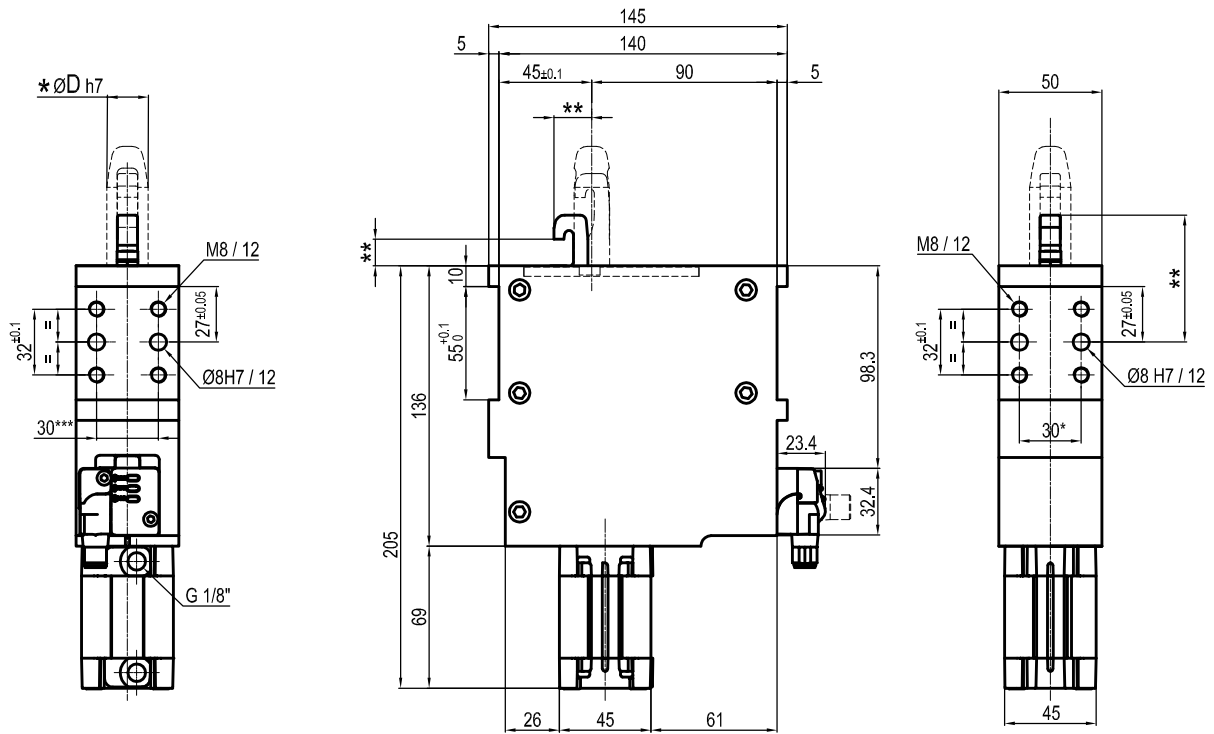
6 = Ø 40 mm

<b>7 Locating pin</b>	<b>8 Progressive numbering</b>
-----------------------	--------------------------------

0 = Locating pin non included

1 = Locating pin included

Progressive numbers for special  
products are assigned by the Sales Dept.



\*\* : Missing dimension to be defined according to customer specifications

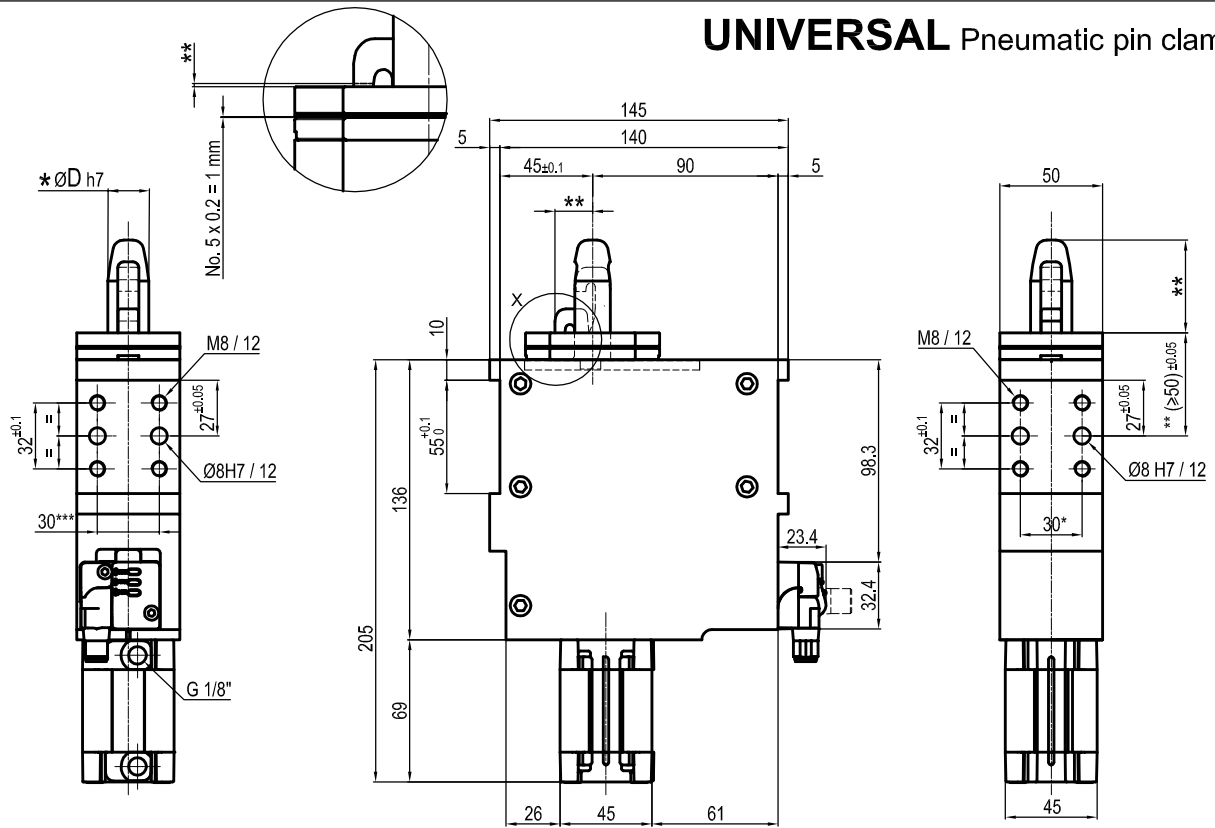
Bore ø	Clamping force	Weight (hook and pin not included)
32 mm	1500 N	3.2 Kg

Min./Max. operating pressure: **0,4 / 0,6 MPa**  
 Operating temperature: **5° + 45° C**  
 Electronic sensor with M12 swivel connector that can be orientated at 0° or 90°  
 Supply voltage: 10+30 Vdc  
 IP code: **IP 54**  
 Pneumatic ports 1/8G

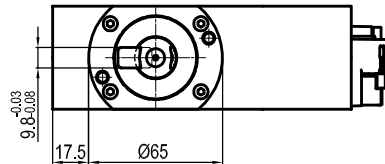
\*\*\* : TOLERANCE BETWEEN DOWEL HOLES ± 0.02, TO SCREW HOLES ± 0.1

Subject to technical modification without notice.

## UNIVERSAL Pneumatic pin clamp



*	ØD
1	≤19
2	20
3	25
4	30
5	35
6	40



\*\* : Missing dimension to be defined according to customer specifications

Bore Ø	Clamping force	Weight (hook and pin not included)
32 mm	1500 N	3.2 Kg

Min./Max. operating pressure: **0,4 / 0,6 MPa**  
 Operating temperature: **5° + 45° C**  
 Electronic sensor with M12 swivel connector that can be orientated at 0° or 90°  
 Supply voltage: 10÷30 Vdc  
 IP code: **IP 54**  
 Pneumatic ports 1/8G

\*\*\* : TOLERANCE BETWEEN DOWEL HOLES ± 0.02, TO SCREW HOLES ± 0.1

Subject to technical modification without notice.