

ISO 21287

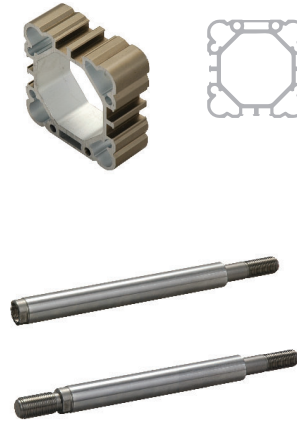
■ RP-RM

Cilindros compactos $\varnothing 16 \div 100$ mm



■ RO-RN

Cilindros compactos $\varnothing 16 \div 63$ mm



■ RS

Cilindros STRONG $\varnothing 32 \div 100$ mm



■ RQ

Cilindros STRONG $\varnothing 32 \div 63$ mm

