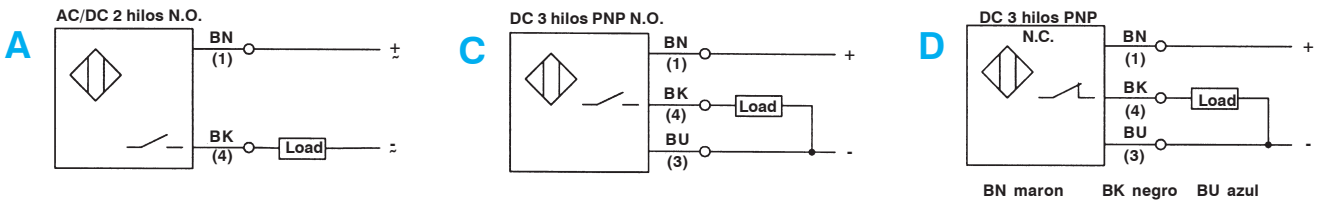
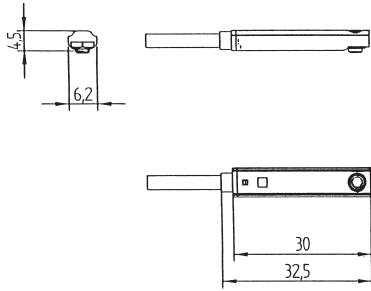




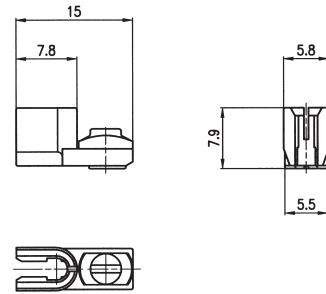
**Circuitos eléctricos**



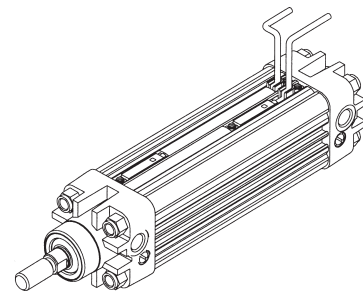
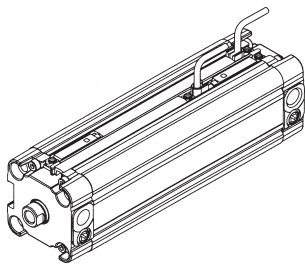
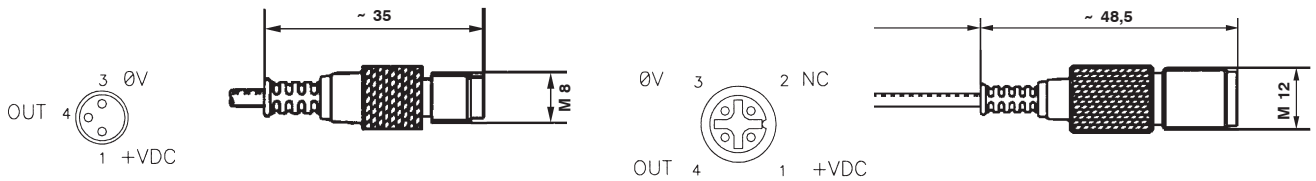
**Dimensiones de montaje DF-...**



**Sujetador de cable DF-001**

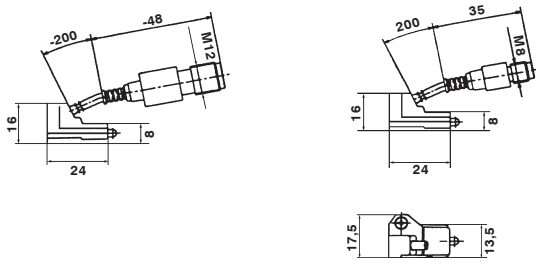


**Conector macho M08, M12**



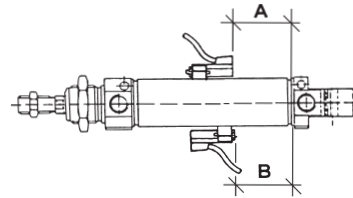


**Dimensiones de montaje DH...**

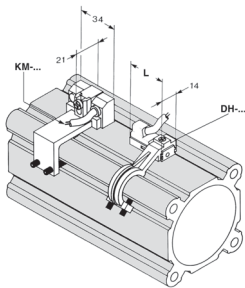


**Fijación correcta**

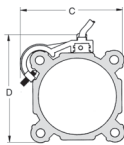
El sensor magnético se fija al cilindro mediante la correspondiente abrazadera o soporte, o simplemente en la acanaladura de la camisa.



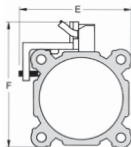
**Cilindro ISO Serie K**



DH-....



KM-....



Cil. Ø	A-B	C	D	Código soporte	E	F	Código sensor más soporte
32	4 - 4	50	57	DH-K032050	50	62	KM-032050
40	6 - 6	56	63		55	67	
50	6 - 6	64	74		65	77	
63	6 - 7	81	87	DH-K063125	80	82	KM-063100
80	9 - 10	96	104		97	109	
100	10 - 10	114	125		114	126	
125	18 - 18	138	150	DH-K160200	137	149	KM-125000
160	25 - 27	180	180				
200	24 - 26	200	220				

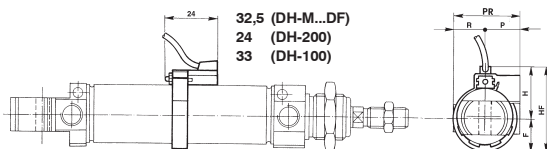
**Microcilindro Serie M**



DH-....



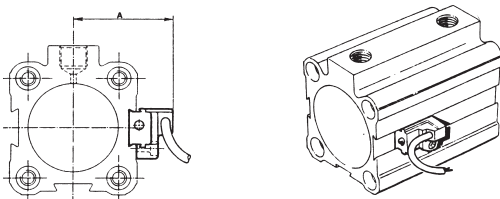
DH-M...DF



Cil. Ø	A-B	F	H	HF	P	R	PR	Código Serie M
10	11 - 11	12,5	22,5	35	17	10	27	DH-M10
12	12,5 - 12,5	11,5	23,5	35	17	10	27	DH-M12
16	14 - 14	15	25	40	18	13	31	DH-M16
20	18,5 - 18,5	19	27	46	18	17	35	DH-M20
25	19 - 19	18	30	48	20	17	37	DH-M25

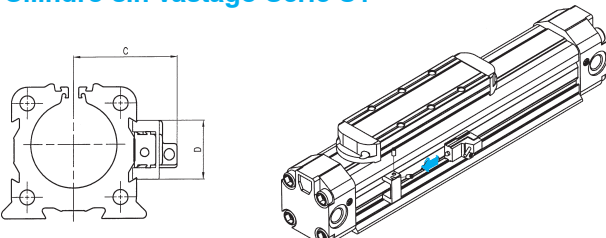
Para pedir la abrazadera para el sensor retráctil serie DF-... al código agregar el sufijo DF.

**Cilindro carrera corta Serie W (no necesita ningún soporte)**



Cil. Ø	16	20	25	32	40	50	63	80	100
A-B	8-8	9-9	11-10	11-10	7-7	6-6	5-5	8-7	11-11
A	26,8	28,8	31,3	35,3	39,5	44	52	60,5	71

**Cilindro sin vástago Serie S1**



Cil. Ø	A-B	C	D	Código soporte
25	25 - 35	34	21	DH-S25
32	35 - 35	39	22	DH-S32
40	50 - 50	46	29	DH-S40
50	60 - 60	54	35	DH-S50