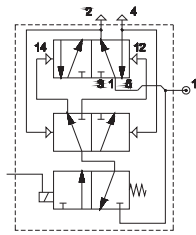
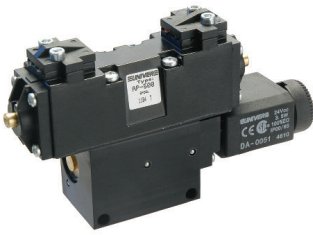


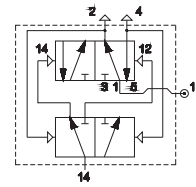
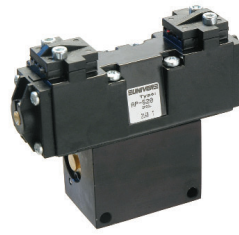
Contadores binarios (flip flop)

■ **AP-500**
Con mando eléctrico



Presión máx. de trabajo: 10 bar
Presión mín. de accionamiento: 3 bar
Temperatura ambiente: -30° ÷ +80° C
Bobina: U1 serie DA

■ **AP-520**
Con mando neumático



Las electroválvulas se suministran sin bobina/conector/tuerca de fijación

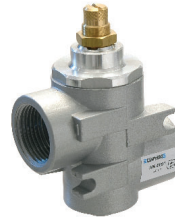
Regulador de flujo cuerpo metálico

■ **AM-50**
Regulador de flujo unidireccional y bidireccional
M5 - G 1/8 - G 1/4 - G 3/8 - G 1/2



		Ø mm
AM-5060	M5	1
AM-5061	G1/8	1
AM-5062	G1/8	2,25
AM-5063	G1/8	3,5
AM-5064	G1/4	5
AM-5065	G1/4	6
AM-5066	G3/8	6
AM-5067	G1/2	9
AM-5070	M5	1
AM-5071	G1/8	1
AM-5072	G1/8	2,25
AM-5074	G1/4	5
AM-5076	G3/8	6
AM-5077	G1/2	9

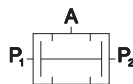
■ **AM-50**
Regulador de flujo unidireccional G 1/2 - G 3/4 - G 1



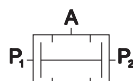
		Ø mm
AM-5090	G1/2	9
AM-5091	G3/4	9
AM-5092	G1	12

Válvulas procesamiento de señales

■ **AM-51**
Válvulas de dos presiones "AND"

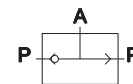


AM-5160
cuerpo roscado G1/8

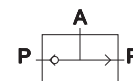


AM-5161
racores rápidos Ø 4x2

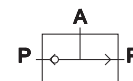
■ **AM-51**
Válvulas selectoras "OR"



AM-5162
cuerpo roscado G 1/8



AM-5163
racores rápidos Ø 4x2




AM-5164
cuerpo roscado G 1/4

Válvula de arranque progresivo

■ AM-52

Válvula de arranque progresivo G1/8 ÷ G 1




Con regulación manual

Modelo	Tamaño	Ø mm
AM-5240	G1/8	6,5
AM-5241	G1/4	6,5
AM-5242	G1/4	9,5
AM-5243	G3/8	9,5

Con interruptor eléctrico

Modelo	Tamaño	Ø mm
AM-5242E	G1/8	9,5
AM-5243E	G3/8	9,5



Con regulación manual

Modelo	Tamaño	Ø mm
AM-5254	G1/2	15
AM-5255	G3/4	15
AM-5256	G1	24

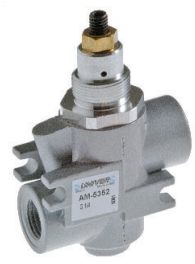
Con interruptor eléctrico

Modelo	Tamaño	Ø mm
AM-5259	G1/2	15
AM-5260	G3/4	15
AM-5261	G1	24

Economizador

■ AM-53

Economizador G 1/8 ÷ G 1




Modelo	Tamaño	Ø mm
AM-5350	G1/8	6,5
AM-5351	G1/4	6,5
AM-5352	G1/4	9,5
AM-5353	G3/8	9,5
AM-5354	G1/2	15
AM-5355	G3/4	15
AM-5356	G1	24

Válvulas de antirretorno

■ AM-54

Válvulas de antirretorno G 1/2 - G 3/4 - G 1




Modelo	Tamaño	Ø mm
AM-5400	G1/2	15
AM-5401	G3/4	15
AM-5402	G1	24

Válvulas de bloqueo


■ AM-55

Válvulas de bloqueo



Unidireccional

Modelo	Tamaño	Ø mm
AM-5500	G1/8	6,5
AM-5501	G1/4	6,5
AM-5502	G1/4	9,5
AM-5503	G3/8	9,5
AM-5504	G1/2	15




Bidireccional

Modelo	Tamaño	Ø mm
AM-5510	G1/8	6,5
AM-5511	G1/4	6,5
AM-5512	G1/4	9,5
AM-5513	G3/8	9,5
AM-5514	G1/2	15

Transductores y presostatos

■ AM-5200


Transductor neumoelectrico



AM-5200

■ AM-5220

Presostato regulable



AM-5220