

YR3



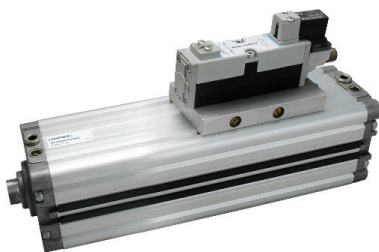
Part. No	Ø	Torque (Nm)*	Kinetic energy (J)	Sensor
YR3003	10	0,3	0,002	DF-T
YR3007	12	0,6	0,006	
YR3010	15	1,5	0,006	
YR3020	18	2,2	0,025	
YR3030	20	3,2	0,048	
YR3050	25	5,5	0,080	
YR3070	28	7,5	0,24	
YR3100	32	9,8	0,32	
YR3200	40	19	0,56	

* = Theoretical torque at 5 bar

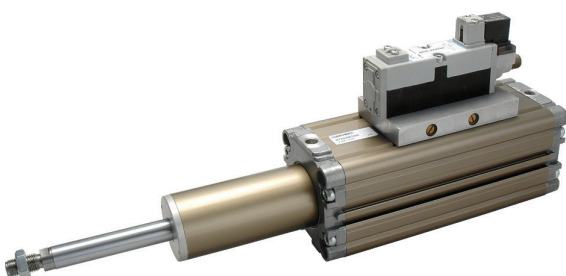
- Ambient temperature: 0 ÷ 50 °C
- Working pressure: 1,5 ÷ 7 bar
- Rotation angle: 0° ÷ 180°
- Version upon request: with idraulic shock absorbers Ø 15 ÷ 63
(add suffix **D** to part no. e.g. YR3010D)

Examples of CYLINDER - VALVE assembly

- **RV - STRONG cylinder with integrated VDMA valve**
STRONG cylinder with integrated 5/2-5/3 VDMA solenoid valve, side 18 or 26 mm.
Supply and exhaust occur directly from the connection plate between valve and cylinder and exhausts are adjustable.
Electrical connection M12 can be operated also from a PLC.



- **RW - Telescopic cylinder with integrated VDMA valve**
Telescopic cylinder with integrated 5/2-5/3 VDMA solenoid valve, side 18 or 26 mm.
Supply and exhaust occur directly from the connection plate between valve and cylinder and exhausts are adjustable.
Electrical connection M12 can be operated also from a PLC.



- **KD series ISO 15552 cylinder with integrated valve**
Valve mounting by means of a proper plate embedded in one of tube sensor grooves.



- **RS series STRONG cylinder with integrated valve**
Valve mounting by means of a proper plate embedded in one of tube sensor grooves.

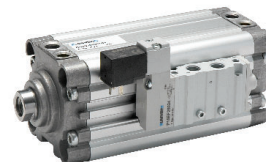


Plate for mounting valve on sensor groove



DF-003 (M3)
DF-004 (M4)