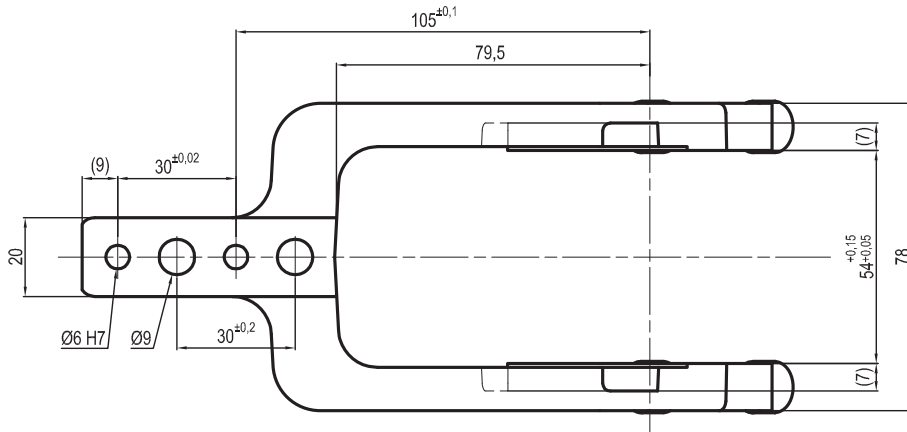
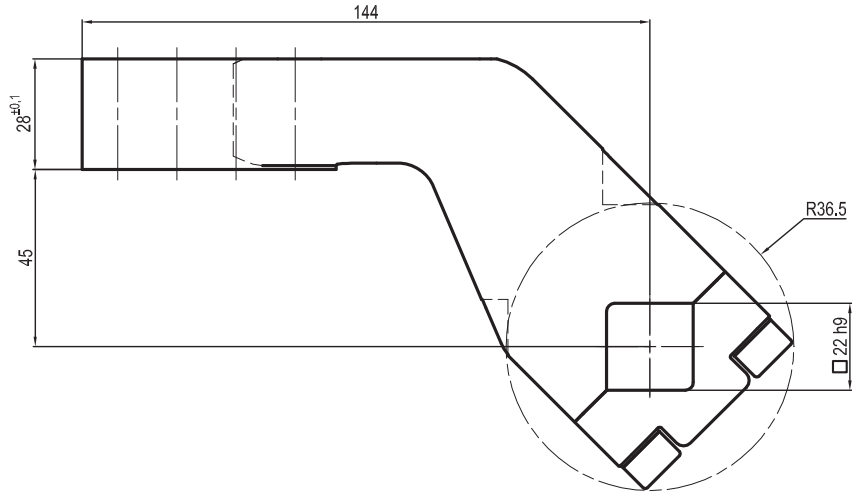


UP310451441A

□ 22 mm - offset 45 mm



| Clamp size | Material  | Weight |
|------------|-----------|--------|
| 63 mm      | Aluminium | 0,3 Kg |

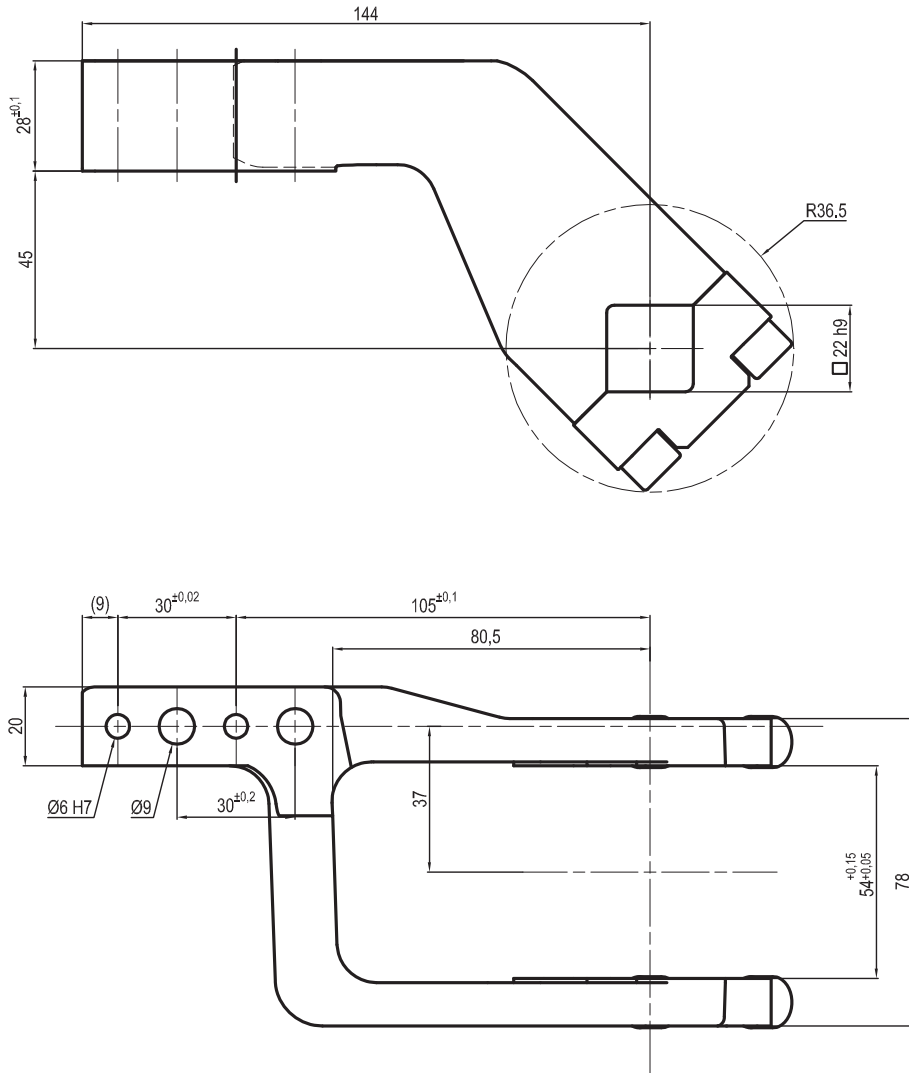
THE CLAMPING ARM INCLUDES THE NECESSARY SCREWS

Subject to technical modifications without notice

Rev. 03 15.07.16

UP310451442A

□ 22 mm - offset 45 mm



| Clamp size | Material  | Weight |
|------------|-----------|--------|
| 63 mm      | Aluminium | 0,3 Kg |

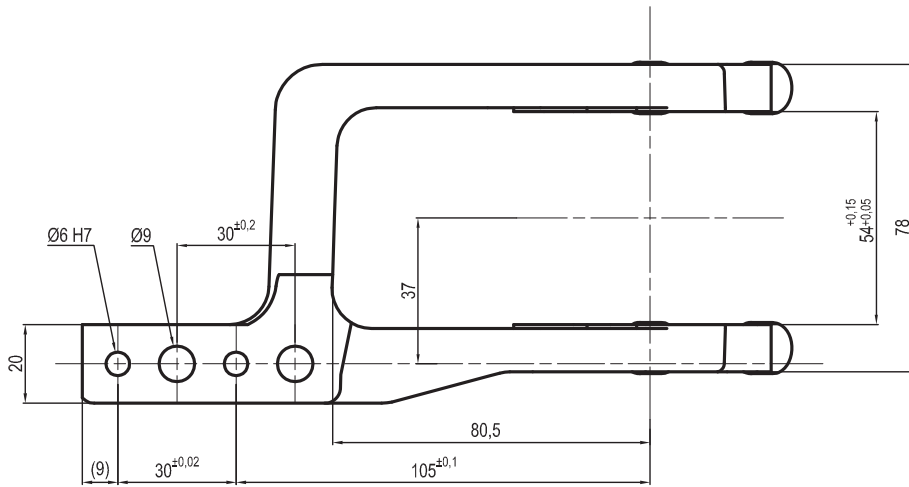
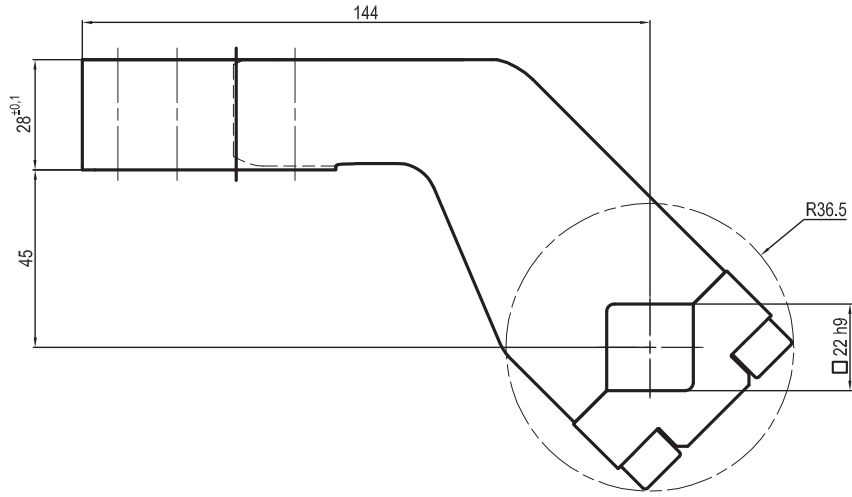
THE CLAMPING ARM INCLUDES THE NECESSARY SCREWS

Subject to technical modifications without notice

Rev. 03 15.07.16

UP310451443A

□ 22 mm - offset 45 mm



| Clamp size | Material  | Weight |
|------------|-----------|--------|
| 63 mm      | Aluminium | 0,3 Kg |

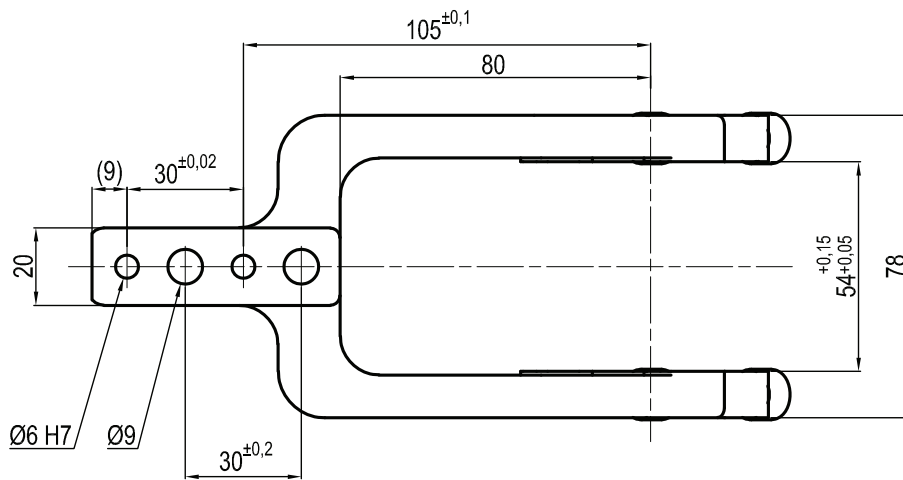
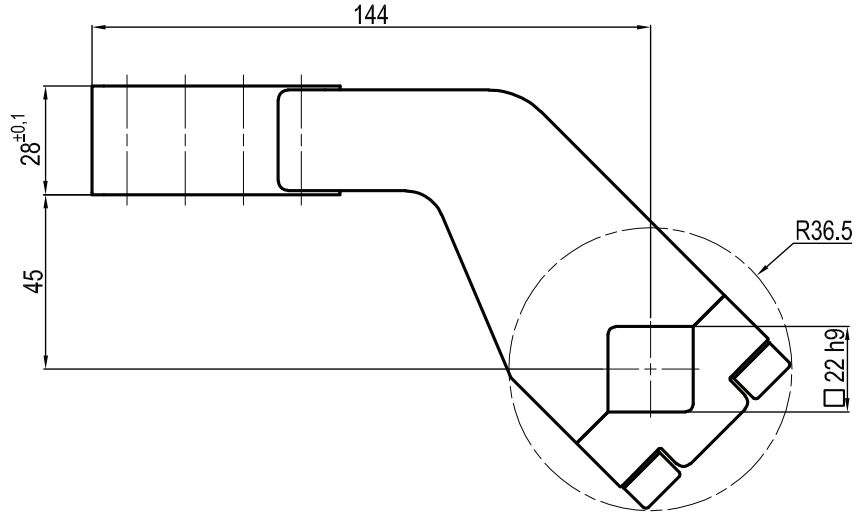
THE CLAMPING ARM INCLUDES THE NECESSARY SCREWS

Subject to technical modifications without notice

Rev. 03 18.07.16

UP310451441S

□ 22 mm - offset 45 mm



| Clamp size | Material | Weight |
|------------|----------|--------|
| 63 mm      | Steel    | 1,4 Kg |

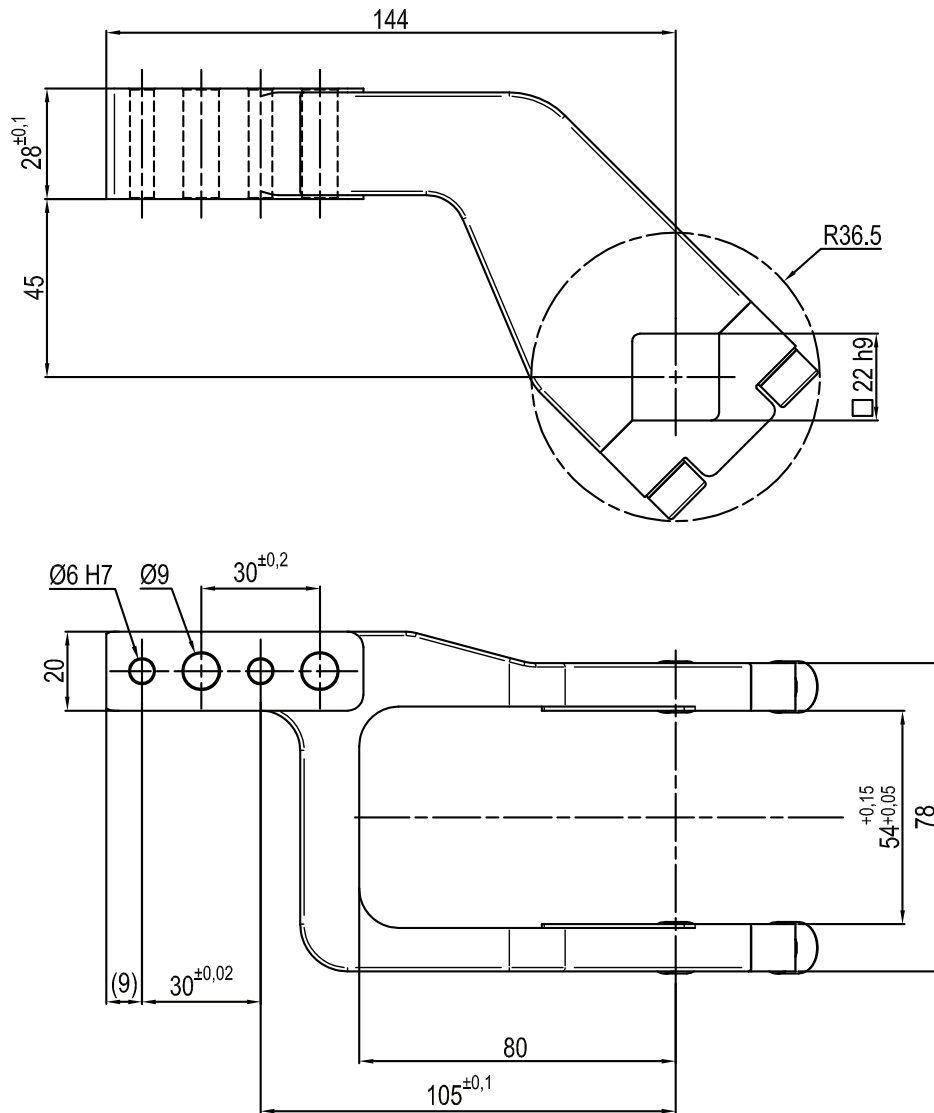
THE CLAMPING ARM INCLUDES THE NECESSARY SCREWS

Subject to technical modifications without notice

Rev. 00 25.08.20

UP310451442S

□ 22 mm - offset 45 mm



| Clamp size | Material | Weight |
|------------|----------|--------|
| 63 mm      | Steel    | 1,4 Kg |

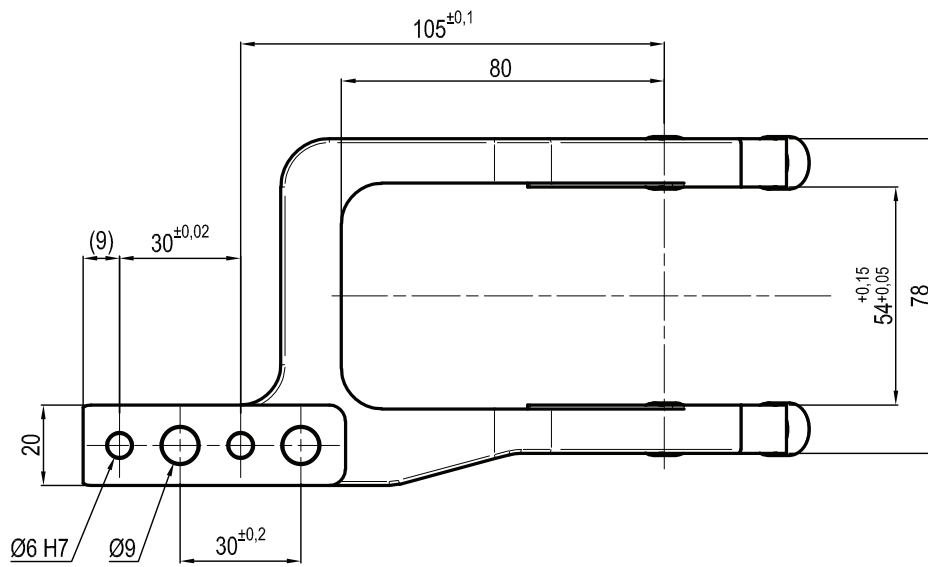
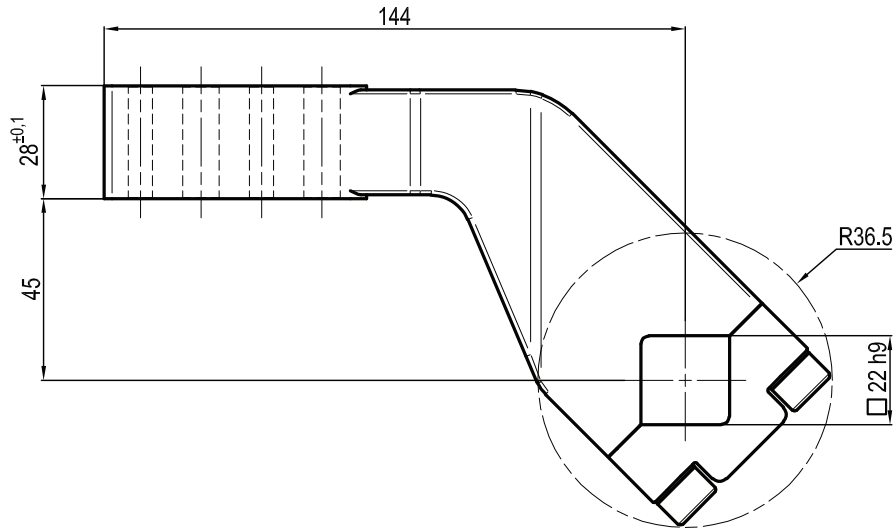
THE CLAMPING ARM INCLUDES THE NECESSARY SCREWS

Subject to technical modifications without notice

Rev. 00 26.08.20

UP310451443S

□ 22 mm - offset 45 mm



| Clamp size | Material | Weight |
|------------|----------|--------|
| 63 mm      | Steel    | 1,4 Kg |

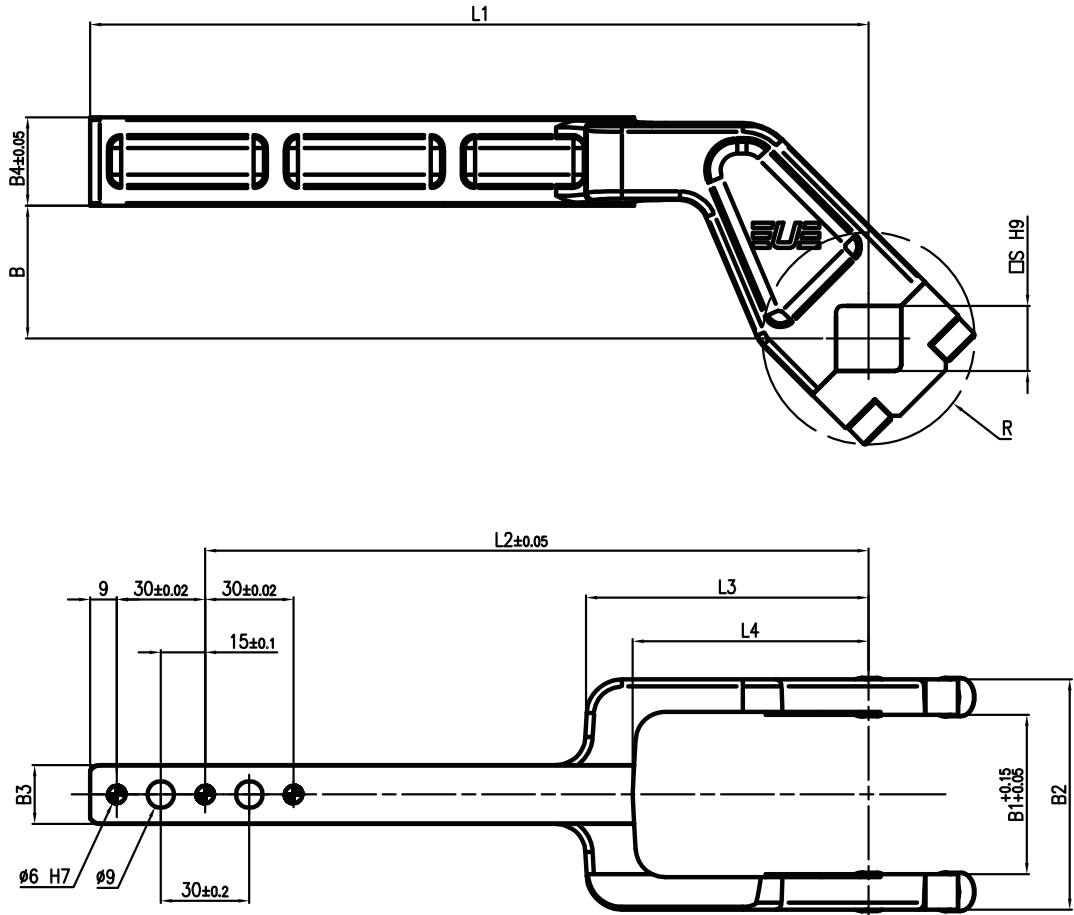
THE CLAMPING ARM INCLUDES THE NECESSARY SCREWS

Subject to technical modifications without notice

Rev. 00 26.08.20

LKP010-2301/2302/2303

□ 22 mm - offset 45 mm



| Part no.    | B  | B1 | B2 | B3 | B4 | L1  | L2  | L3 | L4 | R  | S  | Material |
|-------------|----|----|----|----|----|-----|-----|----|----|----|----|----------|
| LKP010-2301 | 45 | 54 | 78 | 20 | 30 | 144 | 105 | 95 | 80 | 36 | 22 | Steel    |
| LKP010-2302 | 45 | 54 | 78 | 20 | 30 | 204 | 165 | 95 | 80 | 36 | 22 | Steel    |
| LKP010-2303 | 45 | 54 | 78 | 20 | 30 | 264 | 225 | 95 | 80 | 36 | 22 | Steel    |