

USSSL50J__0__N0

5 HOOK POSITION

6 PIN DIAMETER

8 PROGRESSIVE NUMBERING

5 6 8

B = Standard
C = Rotated by 180°

1 <= Ø 19 mm
2 = Ø 20 mm
3 = Ø 25 mm
4 = Ø 30 mm
5 = Ø 35 mm
6 = Ø 40 mm

For pin Ø outside the mentioned range
please contact our Sales Dept.

Progressive numbers for special
products are assigned by the Sales Dept.

Bore Ø	Clamping force	Weight (reference plate, pin and hook not included)
50 mm	3500 N	3,1 Kg

Min./Max. operating pressure: **0,4 / 0,6 MPa**
Operating temperature: **5° ÷ 45° C**
IP code: **IP 65**

** : MISSING DIMENSION TO BE DEFINED ACCORDING TO CUSTOMER SPECIFICATIONS

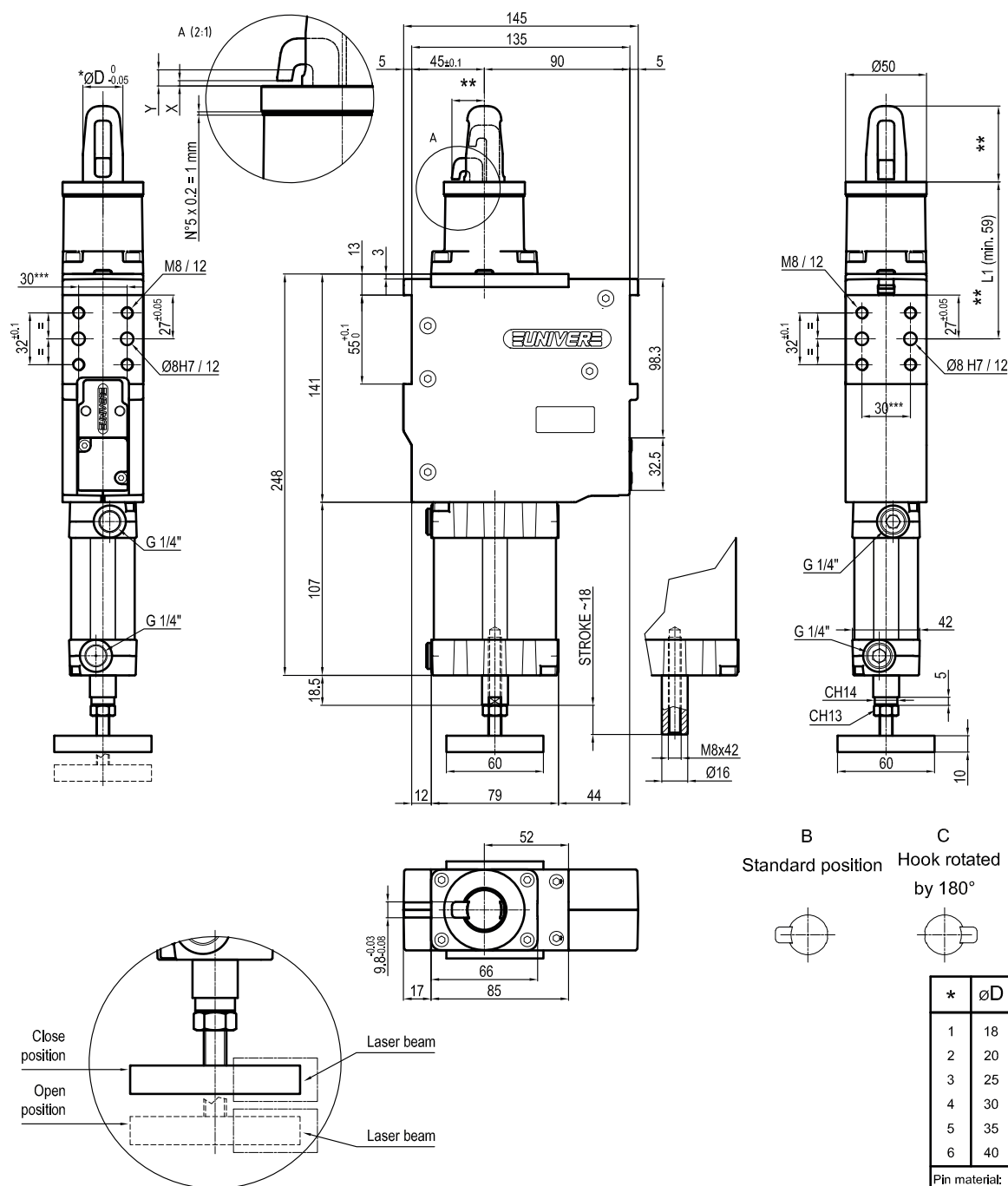
*** : TOLERANCE BETWEEN DOWEL HOLES ± 0,02, BETWEEN SCREW HOLES ± 0,1

X= metal sheet

Y = clamping range (X + 2,3 mm Max)

Subject to technical modifications without notice

Rev. 00 03.04.20


USSL50J__1__N0
5 HOOK POSITION
6 PIN DIAMETER
8 PROGRESSIVE NUMBERING
5 6 8
B = Standard
C = Rotated by 180°
1 <= Ø 19 mm
2 = Ø 20 mm
3 = Ø 25 mm
4 = Ø 30 mm
5 = Ø 35 mm
6 = Ø 40 mm

For pin Ø outside the mentioned range
please contact our Sales Dept.

Progressive numbers for special
products are assigned by the Sales Dept.

Bore Ø	Clamping force	Weight (reference plate, pin and hook not included)
50 mm	3500 N	3,1 Kg

Min./Max. operating pressure: **0,4 / 0,6 MPa**
Operating temperature: **5° ÷ 45° C**
IP code: **IP 65**

** : MISSING DIMENSION TO BE DEFINED ACCORDING TO CUSTOMER SPECIFICATIONS

*** : TOLERANCE BETWEEN DOWEL HOLES ± 0,02, BETWEEN SCREW HOLES ± 0,1

X= metal sheet
Y = clamping range (X + 2,3 mm Max)

Subject to technical modifications without notice