

USS63J\_\_0\_\_K0

5 HOOK POSITION

6 PIN DIAMETER

8 PROGRESSIVE NUMBERING

5 6 8

B = Standard  
C = Rotated by 180°

1 <= Ø 19 mm  
2 = Ø 20 mm  
3 = Ø 25 mm  
4 = Ø 30 mm  
5 = Ø 35 mm  
6 = Ø 40 mm

For pin Ø outside the mentioned range  
please contact our Sales Dept.

Progressive numbers for special  
products are assigned by the Sales Dept.

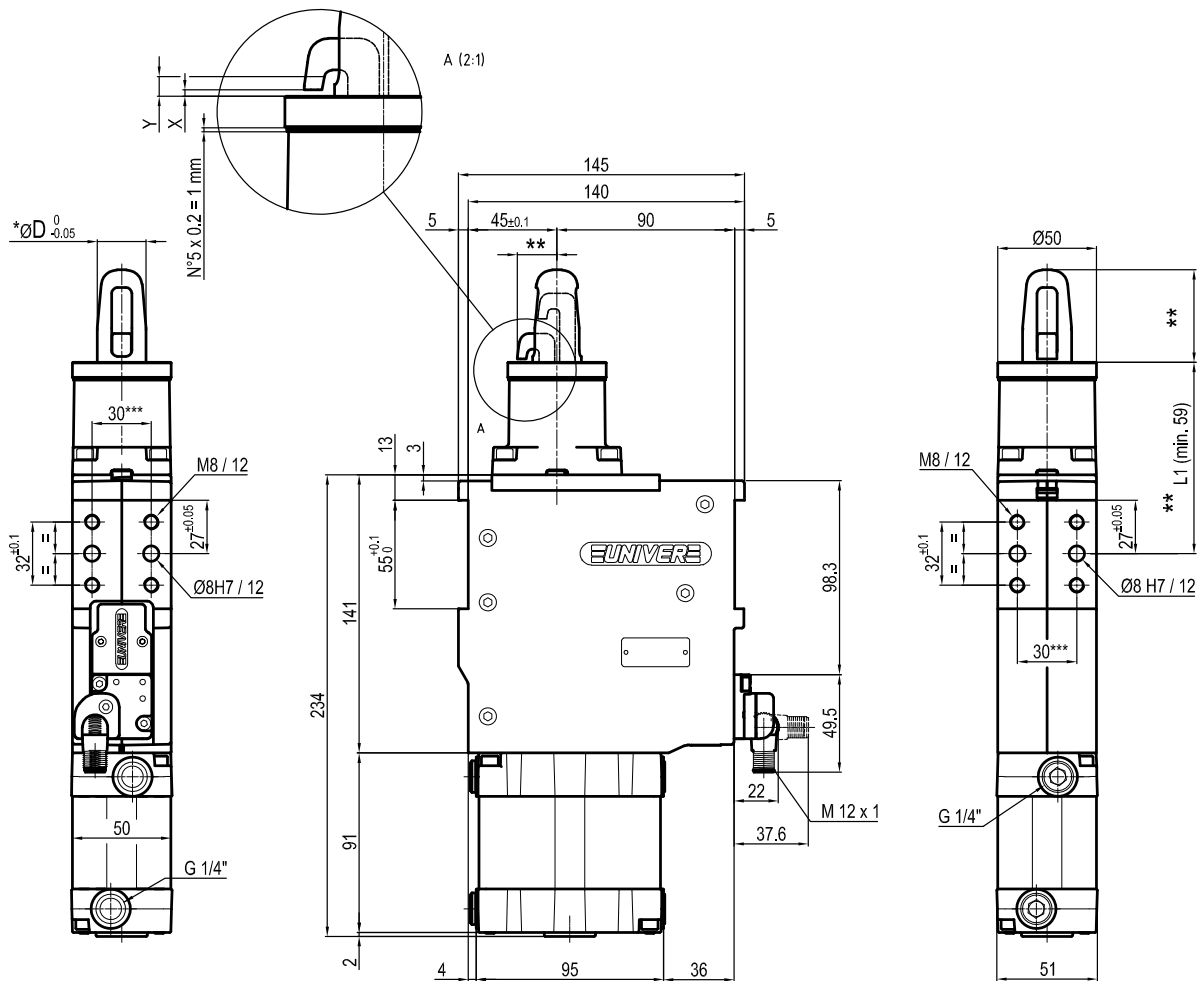
Bore Ø	Clamping force	Weight (reference plate, pin and hook not included)
63 mm	3500 N	3,1 Kg

Min./Max. operating pressure: **0,4 / 0,6 MPa**  
 Operating temperature: **5° ÷ 45° C**  
 Electronic sensor with M12 swivel connector, from 0° to 90°  
 Supply voltage: **10 ÷ 30 Vdc**  
 IP code: **IP 65**

\*\* : MISSING DIMENSION TO BE DEFINED ACCORDING TO CUSTOMER SPECIFICATIONS  
 \*\*\* : TOLERANCE BETWEEN DOWEL HOLES ± 0,02, BETWEEN SCREW HOLES ± 0,1

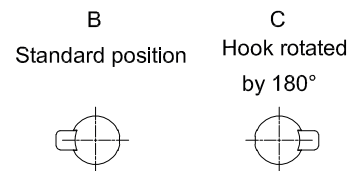
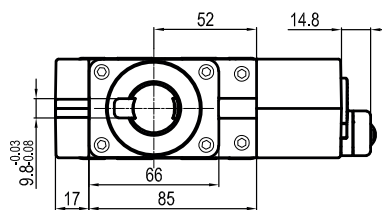
X = metal sheet  
 Y = clamping range (X + 6 mm Max)

Subject to technical modifications without notice



*	ØD
1	18
2	20
3	25
4	30
5	35
6	40

Pin material:  
hardened steel



USS63J\_\_1\_\_K0

5 HOOK POSITION

6 PIN DIAMETER

8 PROGRESSIVE NUMBERING

5 6 8

B = Standard  
C = Rotated by 180°

1 = Ø 19 mm  
2 = Ø 20 mm  
3 = Ø 25 mm  
4 = Ø 30 mm  
5 = Ø 35 mm  
6 = Ø 40 mm

For pin Ø outside the mentioned range please contact our Sales Dept.

Progressive numbers for special products are assigned by the Sales Dept.

Bore Ø	Clamping force	Weight (reference plate, pin and hook not included)
63 mm	3500 N	3,1 Kg

Min./Max. operating pressure: **0,4 / 0,6 MPa**  
 Operating temperature: **5° ÷ 45° C**  
 Electronic sensor with M12 swivel connector, from 0° to 90°  
 Supply voltage: **10 ÷ 30 Vdc**  
 IP code: **IP 65**

\*\* : MISSING DIMENSION TO BE DEFINED ACCORDING TO CUSTOMER SPECIFICATIONS  
 \*\*\* : TOLERANCE BETWEEN DOWEL HOLES ± 0,02, BETWEEN SCREW HOLES ± 0,1

X = metal sheet  
 Y = clamping range (X + 6 mm Max)

Subject to technical modifications without notice