

USS50J__0__K0

5 HOOK POSITION

6 PIN DIAMETER

8 PROGRESSIVE NUMBERING

5 6 8

B = Standard
C = Rotated by 180°

1 <= Ø 19 mm
2 = Ø 20 mm
3 = Ø 25 mm
4 = Ø 30 mm
5 = Ø 35 mm
6 = Ø 40 mm

For pin Ø outside the mentioned range
please contact our Sales Dept.

Progressive numbers for special
products are assigned by the Sales Dept.

Bore Ø	Clamping force	Weight (reference plate, pin and hook not included)
50 mm	3500 N	2,9 Kg

Min./Max. operating pressure: **0,4 / 0,6 MPa**
 Operating temperature: **5° ÷ 45° C**
 Electronic sensor with M12 swivel connector, from 0° to 90°
 Supply voltage: **10 ÷ 30 Vdc**
 IP code: **IP 65**

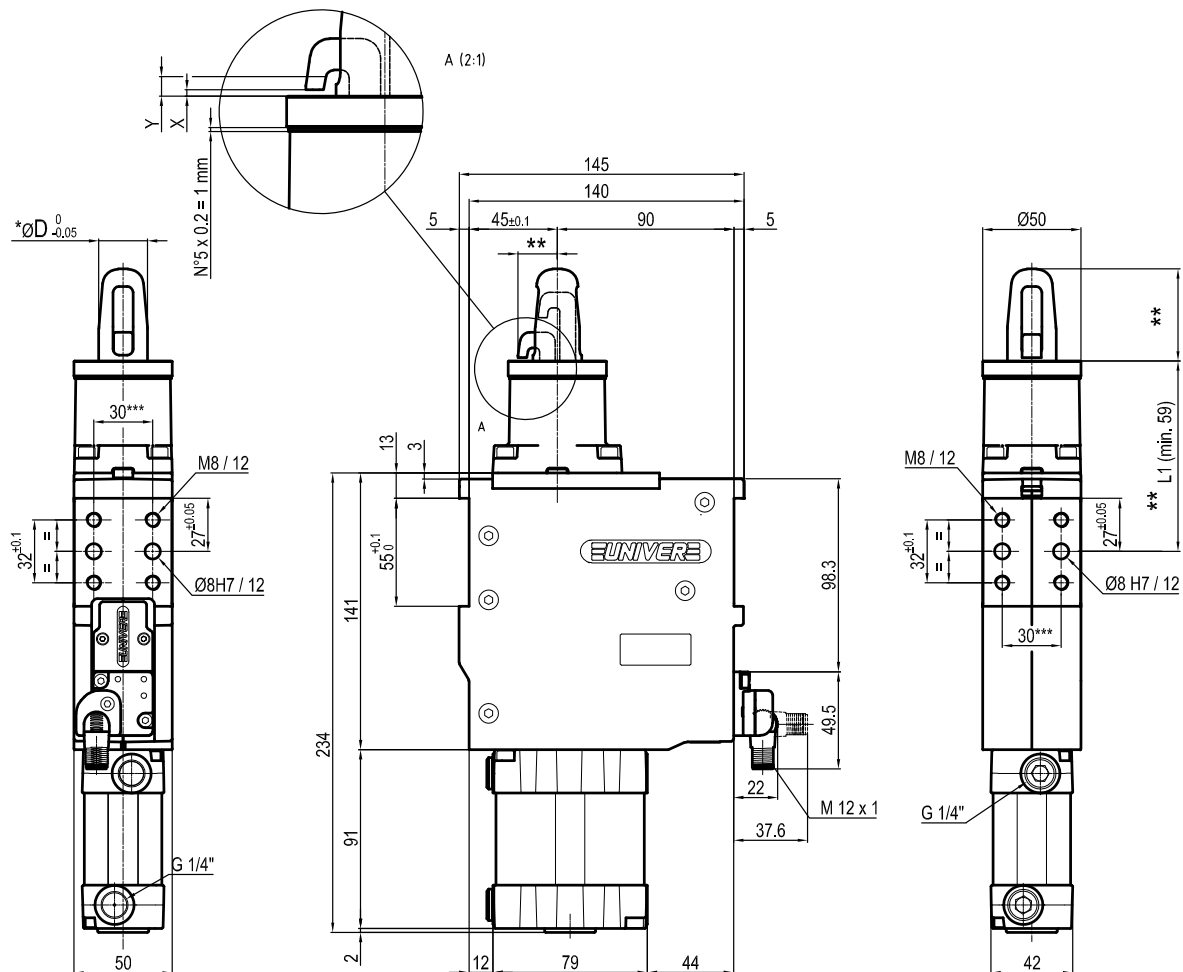
** : MISSING DIMENSION TO BE DEFINED ACCORDING TO CUSTOMER SPECIFICATIONS

*** : TOLERANCE BETWEEN DOWEL HOLES ± 0,02, BETWEEN SCREW HOLES ± 0,1

X= metal sheet

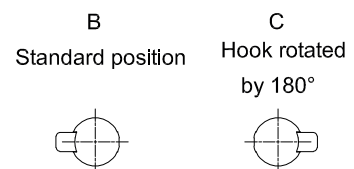
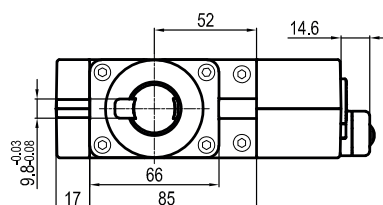
Y = clamping range (X + 2,3 mm Max)

Subject to technical modifications without notice



*	ØD
1	18
2	20
3	25
4	30
5	35
6	40

Pin material:
hardened steel



USS50J__1__K0

5 HOOK POSITION

B = Standard
C = Rotated by 180°

6 PIN DIAMETER

1 <= Ø 19 mm
2 = Ø 20 mm
3 = Ø 25 mm
4 = Ø 30 mm
5 = Ø 35 mm
6 = Ø 40 mm

For pin Ø outside the mentioned range
please contact our Sales Dept.

8 PROGRESSIVE NUMBERING

Progressive numbers for special
products are assigned by the Sales Dept.

Bore Ø	Clamping force	Weight (reference plate, pin and hook not included)
50 mm	3500 N	2,9 Kg

Min./Max. operating pressure: **0,4 / 0,6 MPa**
Operating temperature: **5° ÷ 45° C**
Electronic sensor with M12 swivel connector, from 0° to 90°
Supply voltage: **10 ÷ 30 Vdc**
IP code: **IP 65**

** : MISSING DIMENSION TO BE DEFINED ACCORDING TO CUSTOMER SPECIFICATIONS

*** : TOLERANCE BETWEEN DOWEL HOLES ± 0,02, BETWEEN SCREW HOLES ± 0,1

X= metal sheet

Y= clamping range (X + 2,3 mm Max)

Subject to technical modifications without notice