

*	$\varnothing D$
1	15,8
2	20
3	25
4	30
5	35
6	40

USR40J_OS__K0
5 PIN DIAMETER

8 PROGRESSIVE NUMBERING

5 **8**

- 1 $\leq \varnothing 19$ mm
- 2 $= \varnothing 20$ mm
- 3 $= \varnothing 25$ mm
- 4 $= \varnothing 30$ mm
- 5 $= \varnothing 35$ mm
- 6 $= \varnothing 40$ mm

For pin \varnothing outside the mentioned range please contact our Sales Dept.

Progressive numbers for special products are assigned by the Sales Dept.

Bore \varnothing	Clamping force	Weight (reference plate, pin and hook not included)
40 mm	900 N	1,9 Kg

Min./Max. operating pressure: **0,4 / 0,6 MPa**
 Operating temperature: **5° \pm 45° C**
 Electronic sensor with M12 swivel connector, from 0° to 90°
 Supply voltage: **10 \pm 30 Vdc**
 IP code: **IP 65**

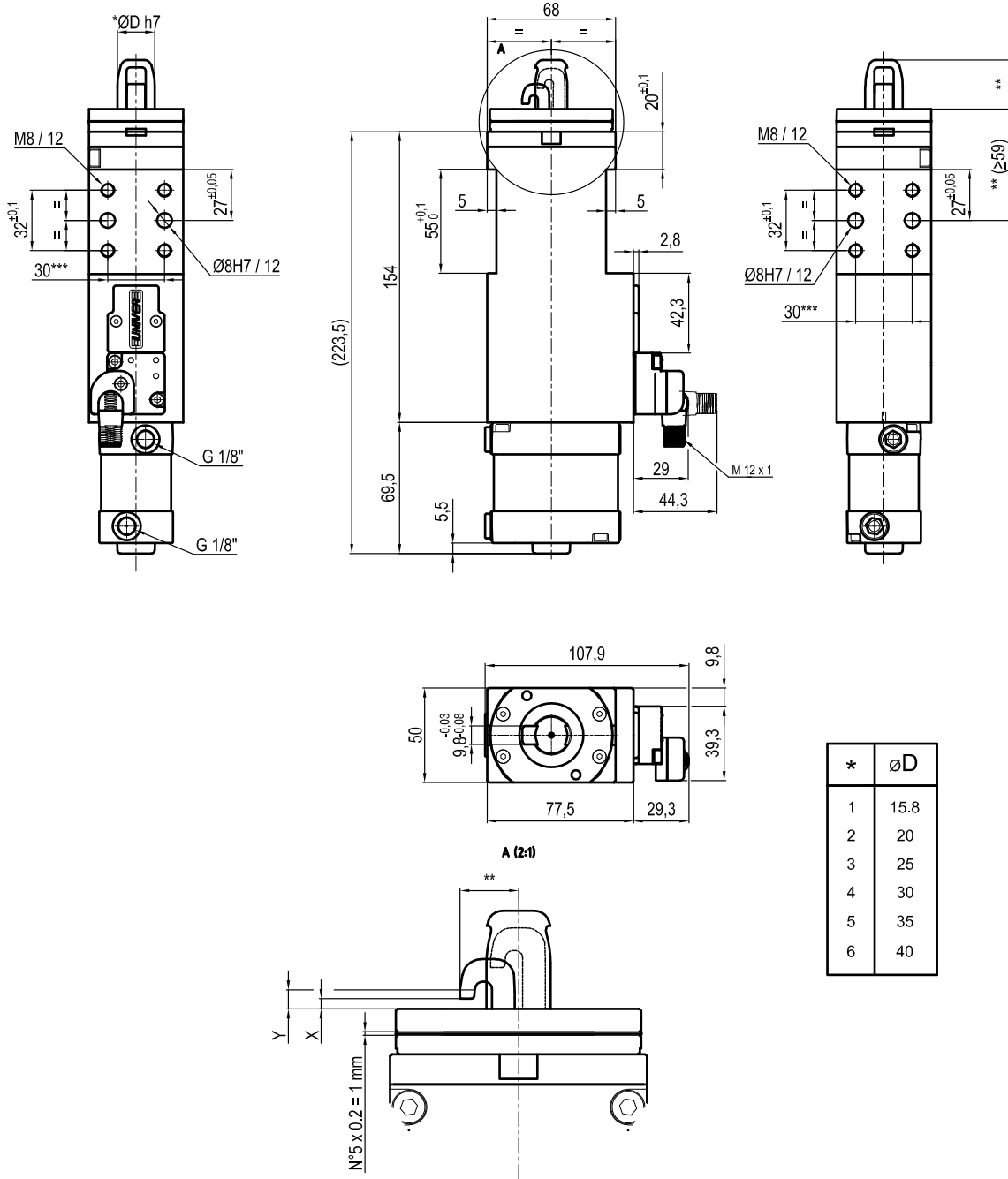
** : MISSING DIMENSION TO BE DEFINED ACCORDING TO CUSTOMER SPECIFICATIONS

*** : TOLERANCE BETWEEN DOWEL HOLES $\pm 0,02$, BETWEEN SCREW HOLES $\pm 0,1$

X= metal sheet

Y= clamping range (X+3 mm Max)

Subject to technical modifications without notice



*	$\varnothing D$
1	15,8
2	20
3	25
4	30
5	35
6	40

USR40J_1S__K0
5 PIN DIAMETER
8 PROGRESSIVE NUMBERING
5 8

- 1 $\leq \varnothing 19$ mm
- 2 $= \varnothing 20$ mm
- 3 $= \varnothing 25$ mm
- 4 $= \varnothing 30$ mm
- 5 $= \varnothing 35$ mm
- 6 $= \varnothing 40$ mm

For pin \varnothing outside the mentioned range please contact our Sales Dept.

Progressive numbers for special products are assigned by the Sales Dept.

Bore \varnothing	Clamping force	Weight (reference plate, pin and hook not included)
40 mm	900 N	1,9 Kg

Min./Max. operating pressure: **0,4 / 0,6 MPa**
 Operating temperature: **5° ± 45° C**
 Electronic sensor with M12 swivel connector, from 0° to 90°
 Supply voltage: **10 ± 30 Vdc**
 IP code: **IP 65**

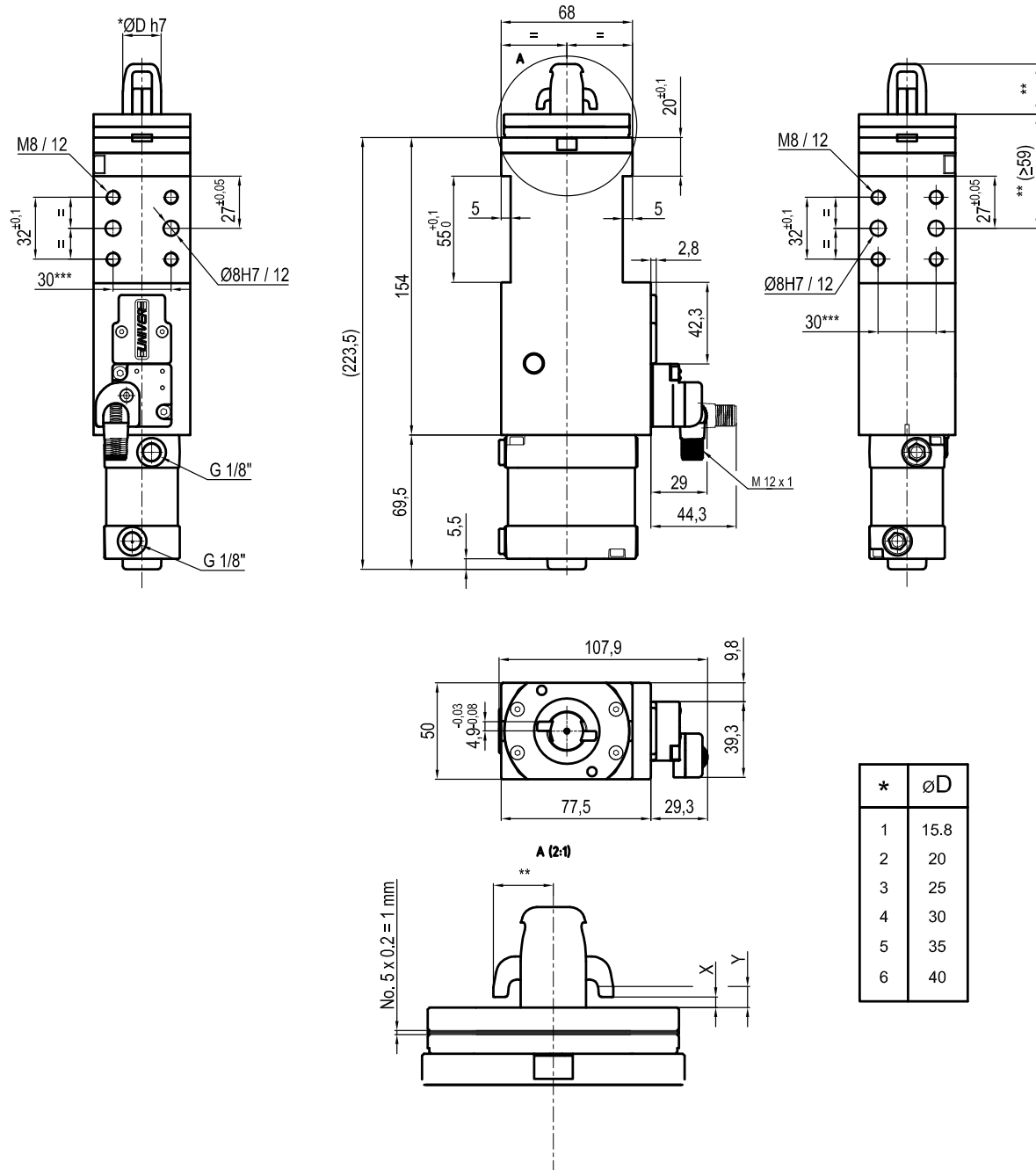
** : MISSING DIMENSION TO BE DEFINED ACCORDING TO CUSTOMER SPECIFICATIONS

*** : TOLERANCE BETWEEN DOWEL HOLES $\pm 0,02$, BETWEEN SCREW HOLES $\pm 0,1$

X= metal sheet

Y= clamping range (X+3 mm Max)

Subject to technical modifications without notice



\ast	$\varnothing D$
1	15.8
2	20
3	25
4	30
5	35
6	40

USR40J_1D__K0
5 PIN DIAMETER
8 PROGRESSIVE NUMBERING
5 8

- 1 $\leq \varnothing 19$ mm
- 2 = $\varnothing 20$ mm
- 3 = $\varnothing 25$ mm
- 4 = $\varnothing 30$ mm
- 5 = $\varnothing 35$ mm
- 6 = $\varnothing 40$ mm

For pin \varnothing outside the mentioned range please contact our Sales Dept.

Progressive numbers for special products are assigned by the Sales Dept.

Bore \varnothing	Clamping force	Weight (reference plate, pin and hook not included)
40 mm	900 N	2 Kg

Min./Max. operating pressure: **0,4 / 0,6 MPa**
 Operating temperature: **5° ± 45° C**
 Electronic sensor with M12 swivel connector, from 0° to 90°
 Supply voltage: **10 ± 30 Vdc**
 IP code: **IP 65**

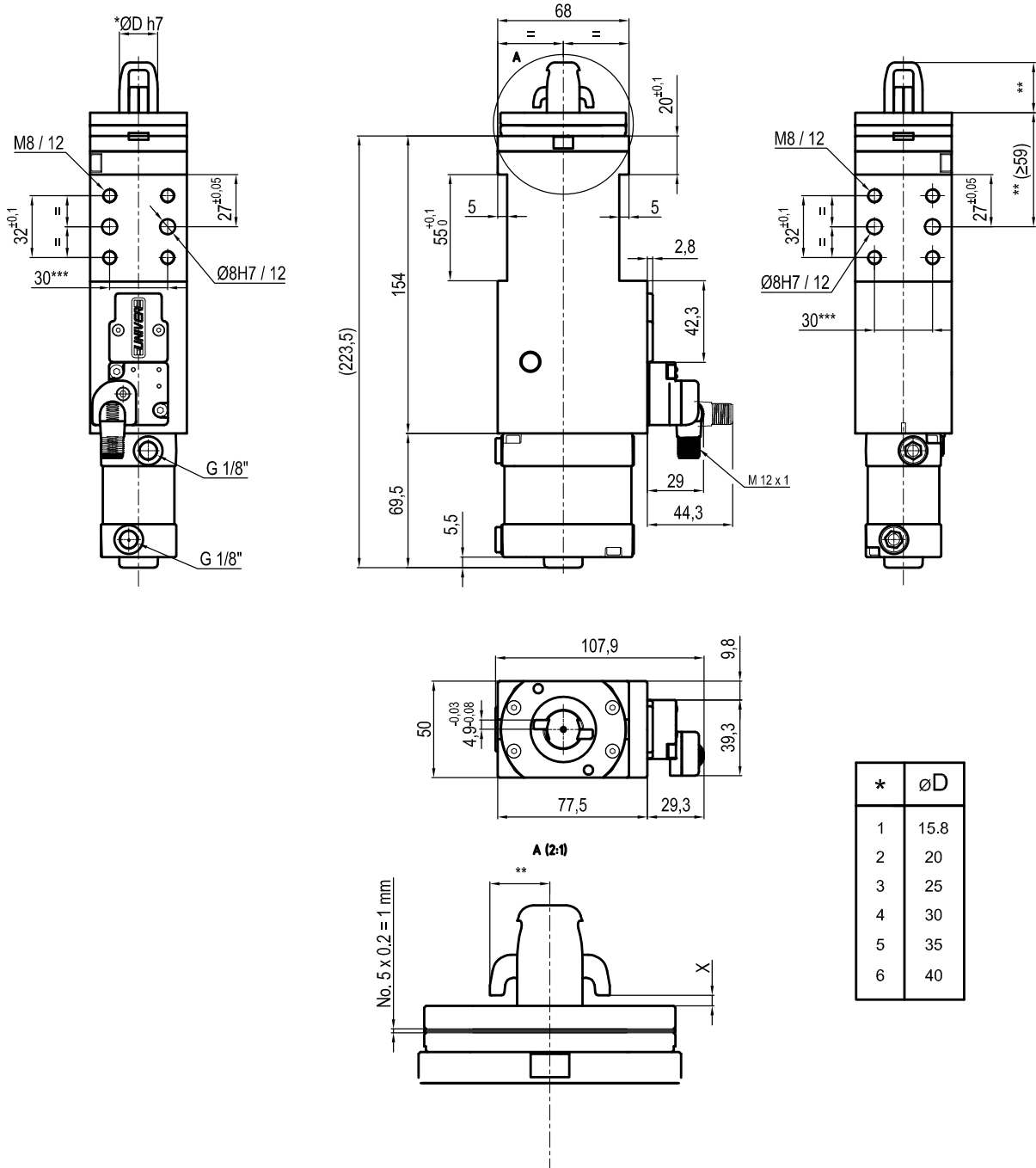
$\ast \ast$: MISSING DIMENSION TO BE DEFINED ACCORDING TO CUSTOMER SPECIFICATIONS

$\ast \ast \ast$: TOLERANCE BETWEEN DOWEL HOLES $\pm 0,02$, BETWEEN SCREW HOLES $\pm 0,1$

X= metal sheet

Y= clamping range (X+3 mm Max)

Subject to technical modifications without notice



*	$\varnothing D$
1	15,8
2	20
3	25
4	30
5	35
6	40

USR40F_1D__K0
5 PIN DIAMETER
8 PROGRESSIVE NUMBERING
5 8

- 1 $\leq \varnothing 19$ mm
- 2 = $\varnothing 20$ mm
- 3 = $\varnothing 25$ mm
- 4 = $\varnothing 30$ mm
- 5 = $\varnothing 35$ mm
- 6 = $\varnothing 40$ mm

For pin \varnothing outside the mentioned range please contact our Sales Dept.

Progressive numbers for special products are assigned by the Sales Dept.

Bore \varnothing	Clamping force	Weight (reference plate, pin and hook not included)
40 mm	900 N	2,1 Kg

Min./Max. operating pressure: **0,4 / 0,6 MPa**
 Operating temperature: **5° \pm 45° C**
 Electronic sensor with M12 swivel connector, from 0° to 90°
 Supply voltage: **10 \pm 30 Vdc**
 IP code: **IP 65**

** : MISSING DIMENSION TO BE DEFINED ACCORDING TO CUSTOMER SPECIFICATIONS
 *** : TOLERANCE BETWEEN DOWEL HOLES $\pm 0,02$, BETWEEN SCREW HOLES $\pm 0,1$
 X= metal sheet

Subject to technical modifications without notice