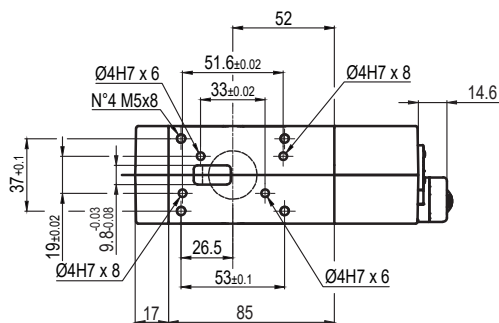


*	ØD
1	18
2	20
3	25
4	30
5	35
6	40

Pin material:  
hardened steel


**USP50J\_0\_ \_ \_ K0**
**5 7**
**5 PIN DIAMETER**

- 1 <= Ø 19 mm
- 2 = Ø 20 mm
- 3 = Ø 25 mm
- 4 = Ø 30 mm
- 5 = Ø 35 mm
- 6 = Ø 40 mm

For pin Ø outside the mentioned range please contact our Sales Dept.

**7 PROGRESSIVE NUMBERING**

Progressive numbers for special products are assigned by the Sales Dept.

Bore Ø	Clamping force	Weight (reference plate, pin and hook not included)
50 mm	3500 N	2,9 Kg

Min./Max. operating pressure: **0,4 / 0,6 MPa**  
 Operating temperature: **5° ÷ 45° C**  
 Electronic sensor with M12 swivel connector, from 0° to 90°  
 Supply voltage: **10 ÷ 30 Vdc**  
 IP code: **IP 65**

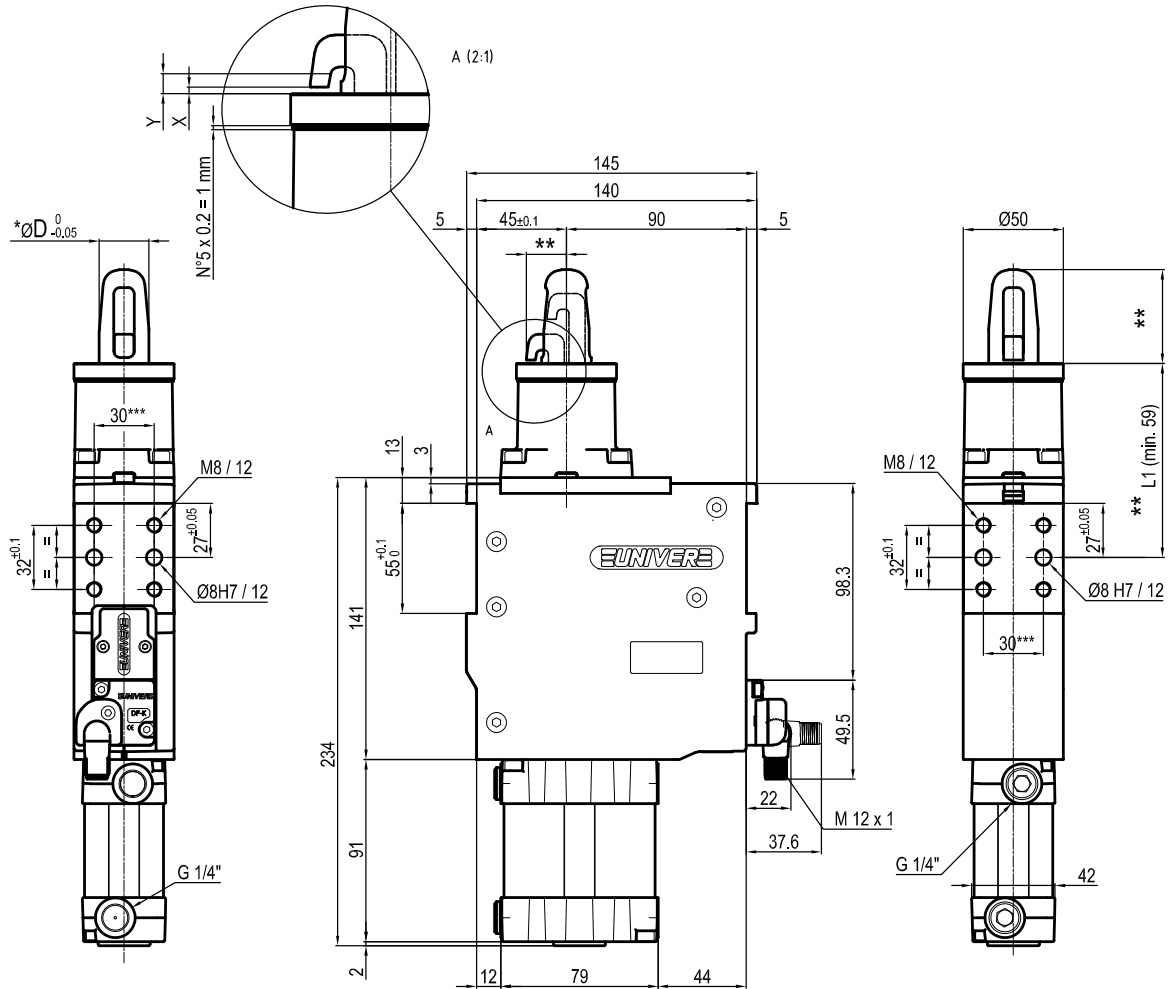
\*\* : MISSING DIMENSION TO BE DEFINED ACCORDING TO CUSTOMER SPECIFICATIONS

\*\*\* : TOLERANCE BETWEEN DOWEL HOLES ± 0,02, BETWEEN SCREW HOLES ± 0,1

X= metal sheet

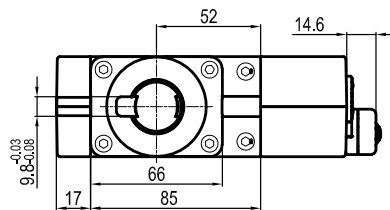
Y = clamping range (X + 2,3 mm Max)

Subject to technical modifications without notice



*	øD
1	18
2	20
3	25
4	30
5	35
6	40

Pin material:  
hardened steel


**USP50J\_1\_\_\_K0**
**5 7**
**5 PIN DIAMETER**

- 1 <= Ø 19 mm
- 2 = Ø 20 mm
- 3 = Ø 25 mm
- 4 = Ø 30 mm
- 5 = Ø 35 mm
- 6 = Ø 40 mm

For pin Ø outside the mentioned range  
please contact our Sales Dept.

**7 PROGRESSIVE NUMBERING**

Progressive numbers for special  
products are assigned by the Sales Dept.

Bore ø	Clamping force	Weight (reference plate, pin and hook not included)
50 mm	3500 N	2,9 Kg

Min./Max. operating pressure: **0,4 / 0,6 MPa**  
 Operating temperature: **5° ÷ 45° C**  
 Electronic sensor with M12 swivel connector, from 0° to 90°  
 Supply voltage: **10 ÷ 30 Vdc**  
 IP code: **IP 65**

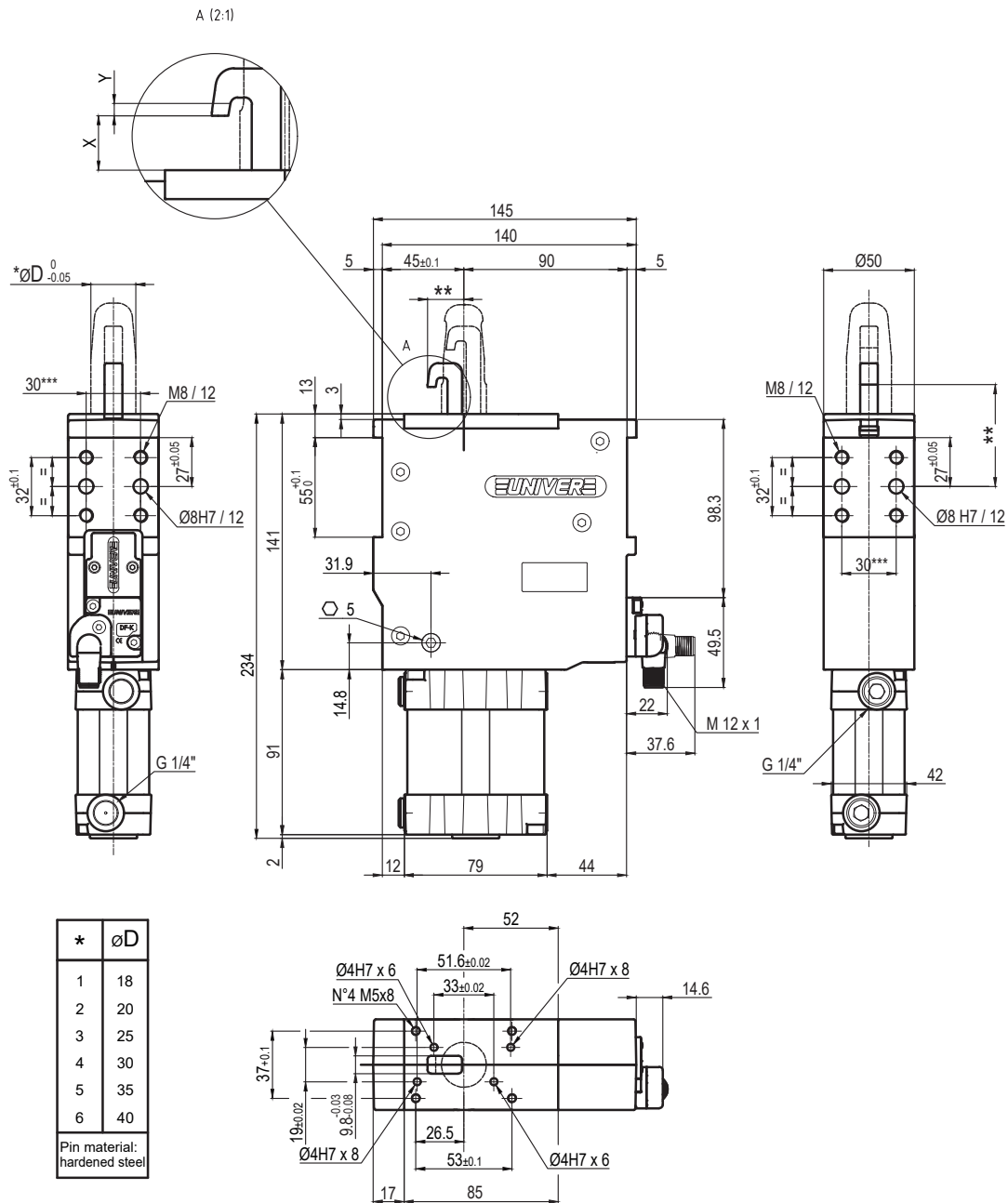
\*\* : MISSING DIMENSION TO BE DEFINED ACCORDING TO CUSTOMER SPECIFICATIONS

\*\*\* : TOLERANCE BETWEEN DOWEL HOLES ± 0,02, BETWEEN SCREW HOLES ± 0,1

**X= metal sheet**

**Y = clamping range (X + 2,3 mm Max)**

Subject to technical modifications without notice


**USP50R\_0\_ \_ \_ K0**
**5 7**
**5 PIN DIAMETER**

- 1 <= ∅ 19 mm
- 2 = ∅ 20 mm
- 3 = ∅ 25 mm
- 4 = ∅ 30 mm
- 5 = ∅ 35 mm
- 6 = ∅ 40 mm

For pin ∅ outside the mentioned range please contact our Sales Dept.

**7 PROGRESSIVE NUMBERING**

Progressive numbers for special products are assigned by the Sales Dept.

Bore ∅	Clamping force	Weight (reference plate, pin and hook not included)
50 mm	3500 N	3,2 Kg

Min./Max. operating pressure: **0,4 / 0,6 MPa**  
 Operating temperature: **5° ÷ 45° C**  
 Electronic sensor with M12 swivel connector, from 0° to 90°  
 Supply voltage: **10 ÷ 30 Vdc**  
 IP code: **IP 65**

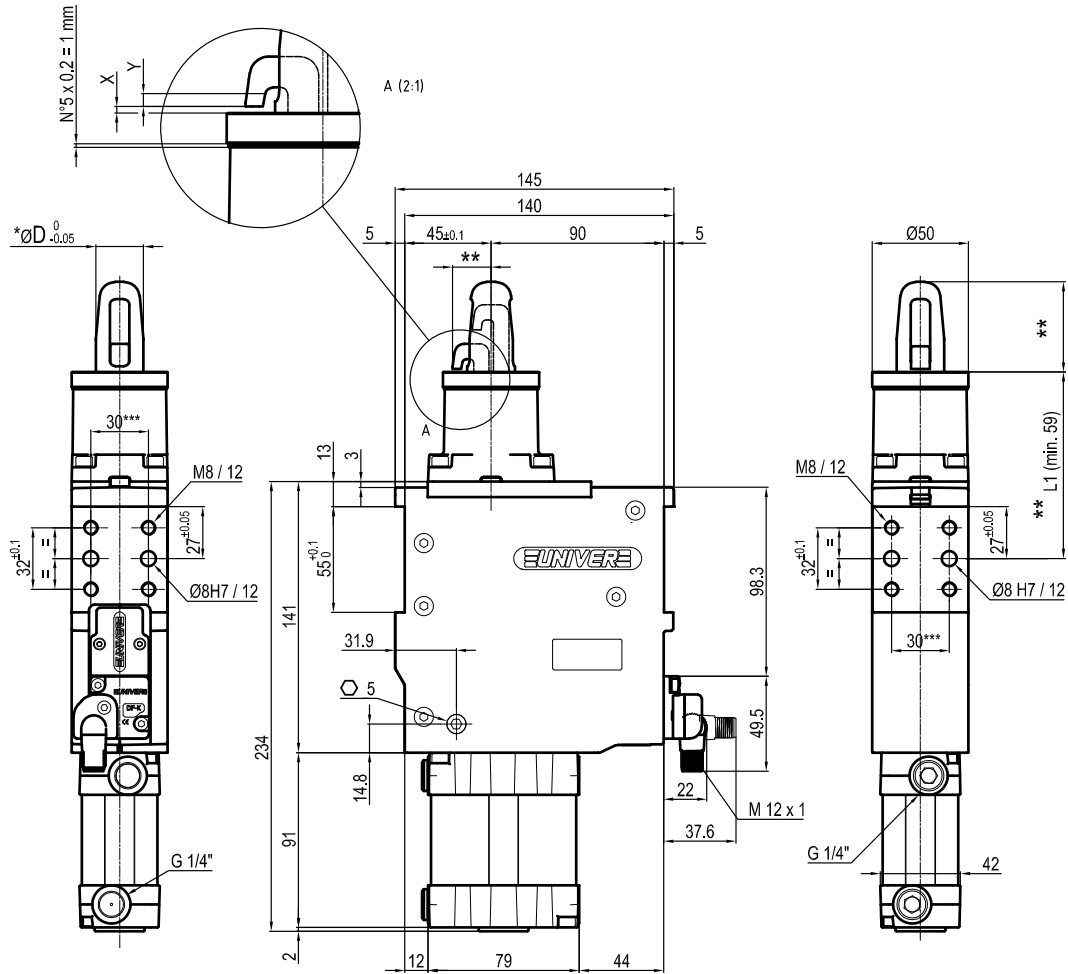
\*\* : MISSING DIMENSION TO BE DEFINED ACCORDING TO CUSTOMER SPECIFICATIONS

\*\*\* : TOLERANCE BETWEEN DOWEL HOLES ± 0,02, BETWEEN SCREW HOLES ± 0.1

X= metal sheet

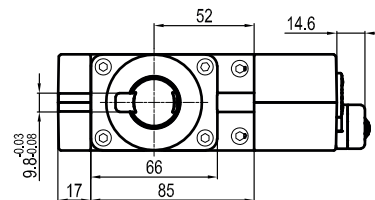
Y = clamping range (X + 2,3 mm Max)

Subject to technical modifications without notice



*	ØD
1	18
2	20
3	25
4	30
5	35
6	40

Pin material:  
hardened steel


**USP50R\_1\_\_\_K0**
**5 PIN DIAMETER**
**7 PROGRESSIVE NUMBERING**
**5 7**

- 1 = Ø 19 mm
- 2 = Ø 20 mm
- 3 = Ø 25 mm
- 4 = Ø 30 mm
- 5 = Ø 35 mm
- 6 = Ø 40 mm

For pin Ø outside the mentioned range please contact our Sales Dept.

Progressive numbers for special products are assigned by the Sales Dept.

Bore Ø	Clamping force	Weight (reference plate, pin and hook not included)
50 mm	3500 N	3,2 Kg

Min./Max. operating pressure: **0,4 / 0,6 MPa**  
 Operating temperature: **5° ÷ 45° C**  
 Electronic sensor with M12 swivel connector, from 0° to 90°  
 Supply voltage: **10 ÷ 30 Vdc**  
 IP code: **IP 65**

\*\* : MISSING DIMENSION TO BE DEFINED ACCORDING TO CUSTOMER SPECIFICATIONS  
 \*\*\* : TOLERANCE BETWEEN DOWEL HOLES ± 0,02, BETWEEN SCREW HOLES ± 0,1

X= metal sheet

Y = clamping range (X + 2,3 mm Max)

Subject to technical modifications without notice