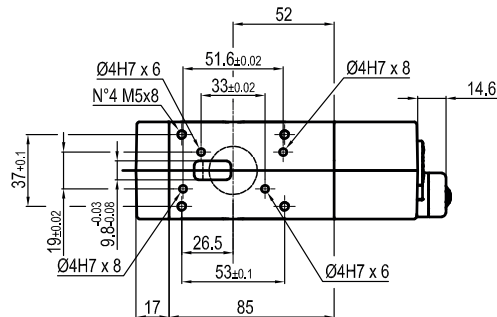


*	∅D
1	18
2	20
3	25
4	30
5	35
6	40

Pin material: hardened steel



USP32J_0_ _ _ K0

5 7

5 PIN DIAMETER

- 1 <= ∅ 19 mm
- 2 = ∅ 20 mm
- 3 = ∅ 25 mm
- 4 = ∅ 30 mm
- 5 = ∅ 35 mm
- 6 = ∅ 40 mm

For pin ∅ outside the mentioned range please contact our Sales Dept.

7 PROGRESSIVE NUMBERING

Progressive numbers for special products are assigned by the Sales Dept.

Bore ∅	Clamping force	Weight (reference plate, pin and hook not included)
32 mm	1500 N	2,6 Kg

Min./Max. operating pressure: **0,4 / 0,6 MPa**

Operating temperature: **5° ÷ 45° C**

Electronic sensor with M12 swivel connector, from 0° to 90°

Supply voltage: **10 ÷ 30 Vdc**

IP code: **IP 65**

** : MISSING DIMENSION TO BE DEFINED ACCORDING TO CUSTOMER SPECIFICATIONS

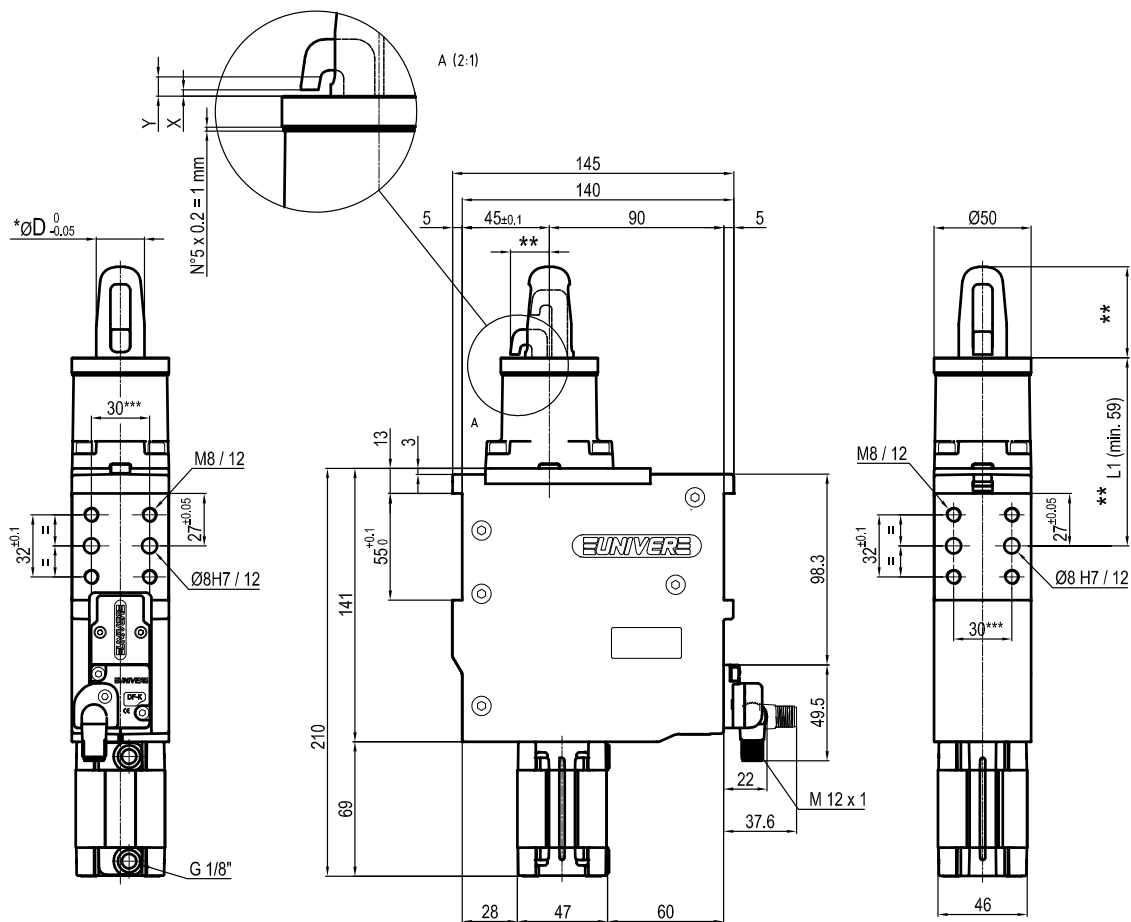
*** : TOLERANCE BETWEEN DOWEL HOLES ± 0,02, BETWEEN SCREW HOLES ± 0,1

X= metal sheet

Y = clamping range (X + 1,2 mm Max)

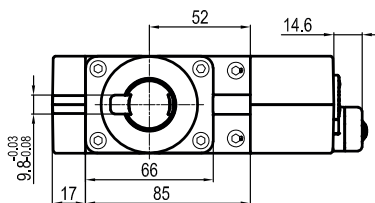
Subject to technical modifications without notice

Rev. 00 10.06.20



*	ØD
1	18
2	20
3	25
4	30
5	35
6	40

Pin material:
hardened steel



USP32J_1___K0

5 7

5 PIN DIAMETER

- 1 = Ø 19 mm
- 2 = Ø 20 mm
- 3 = Ø 25 mm
- 4 = Ø 30 mm
- 5 = Ø 35 mm
- 6 = Ø 40 mm

For pin Ø outside the mentioned range
please contact our Sales Dept.

7 PROGRESSIVE NUMBERING

Progressive numbers for special
products are assigned by the Sales Dept.

Bore Ø	Clamping force	Weight (reference plate, pin and hook not included)
32 mm	1500 N	2,6 Kg

Min./Max. operating pressure: **0,4 / 0,6 MPa**
 Operating temperature: **5° ÷ 45° C**
 Electronic sensor with M12 swivel connector, from 0° to 90°
 Supply voltage: **10 ÷ 30 Vdc**
 IP code: **IP 65**

** : MISSING DIMENSION TO BE DEFINED ACCORDING TO CUSTOMER SPECIFICATIONS

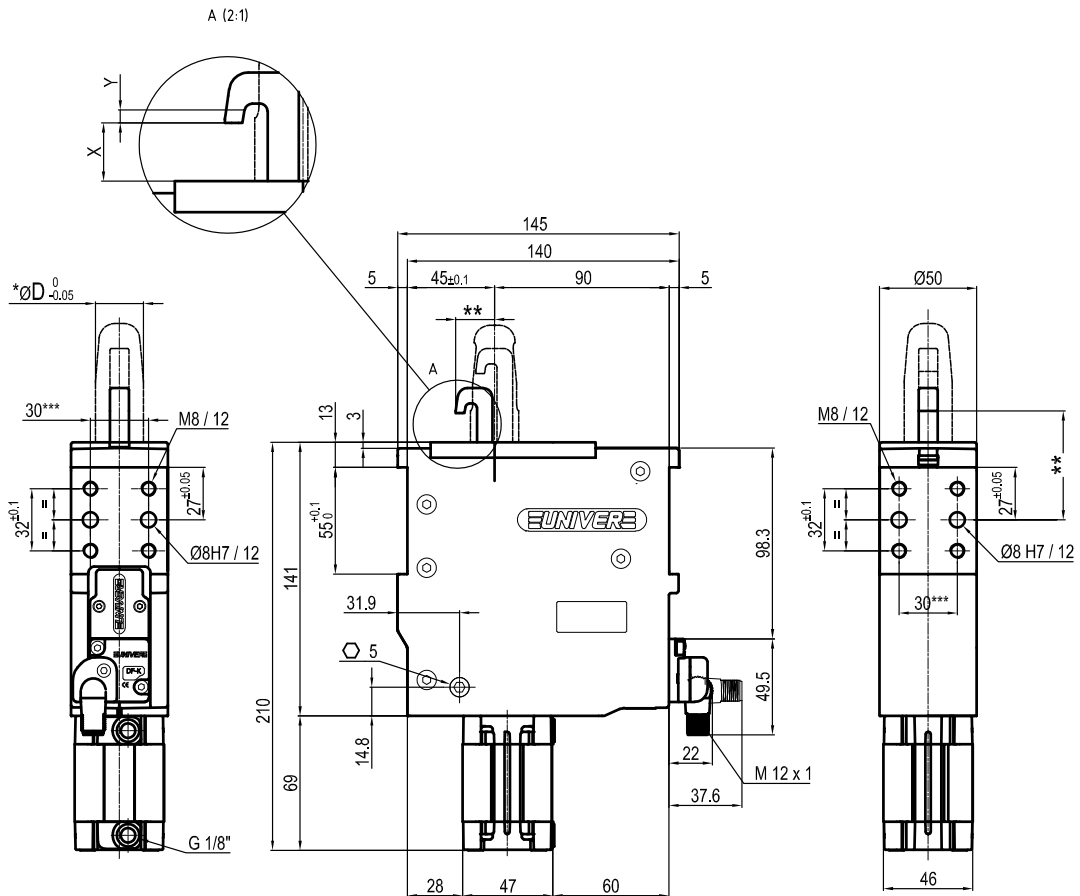
*** : TOLERANCE BETWEEN DOWEL HOLES ± 0,02, BETWEEN SCREW HOLES ± 0,1

X= metal sheet

Y = clamping range (X + 1,2 mm Max)

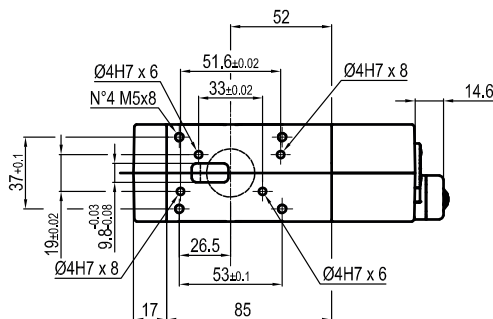
Subject to technical modifications without notice

Rev. 01 16.10.20



*	ØD
1	18
2	20
3	25
4	30
5	35
6	40

Pin material:
hardened steel


USP32R_0_ _ _ K0
5 7
5 PIN DIAMETER

- 1 <= Ø 19 mm
- 2 = Ø 20 mm
- 3 = Ø 25 mm
- 4 = Ø 30 mm
- 5 = Ø 35 mm
- 6 = Ø 40 mm

For pin Ø outside the mentioned range
please contact our Sales Dept.

7 PROGRESSIVE NUMBERING

Progressive numbers for special
products are assigned by the Sales Dept.

Bore Ø	Clamping force	Weight (reference plate, pin and hook not included)
32 mm	1500 N	2,9 Kg

Min./Max. operating pressure: **0,4 / 0,6 MPa**
 Operating temperature: **5° ÷ 45° C**
 Electronic sensor with M12 swivel connector, from 0° to 90°
 Supply voltage: **10 ÷ 30 Vdc**
 IP code: **IP 65**

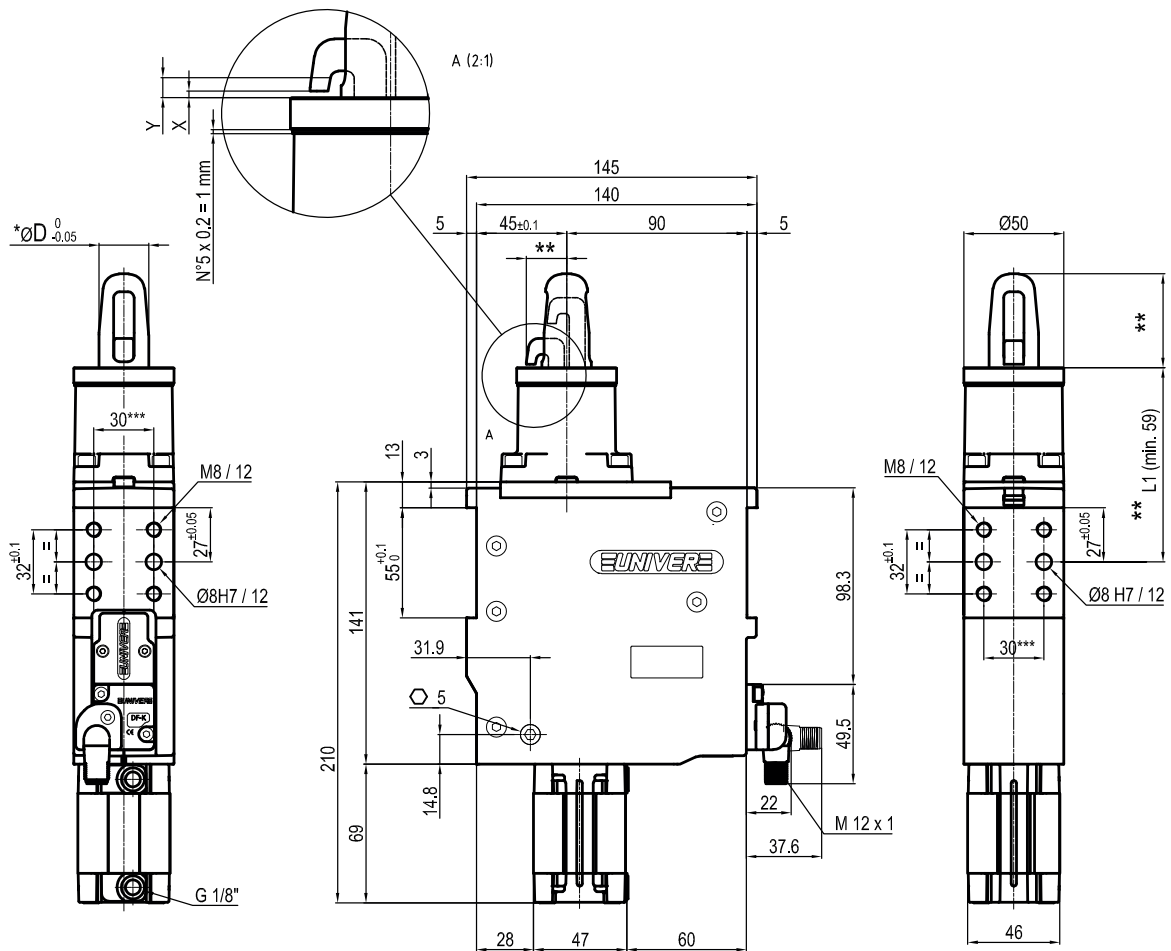
** : MISSING DIMENSION TO BE DEFINED ACCORDING TO CUSTOMER SPECIFICATIONS

*** : TOLERANCE BETWEEN DOWEL HOLES ± 0,02, BETWEEN SCREW HOLES ± 0,1

X= metal sheet

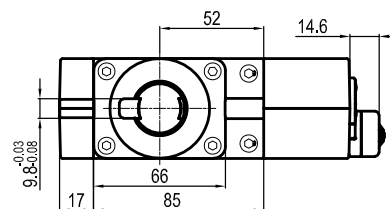
Y = clamping range (X + 1,2 mm Max)

Subject to technical modifications without notice



*	ØD
1	18
2	20
3	25
4	30
5	35
6	40

Pin material: hardened steel


USP32R_1___K0
5 7
5 PIN DIAMETER

- 1 <= Ø 19 mm
- 2 = Ø 20 mm
- 3 = Ø 25 mm
- 4 = Ø 30 mm
- 5 = Ø 35 mm
- 6 = Ø 40 mm

For pin Ø outside the mentioned range please contact our Sales Dept.

7 PROGRESSIVE NUMBERING

Progressive numbers for special products are assigned by the Sales Dept.

Bore Ø	Clamping force	Weight (reference plate, pin and hook not included)
32 mm	1500 N	2,9 Kg

Min./Max. operating pressure: **0,4 / 0,6 MPa**
 Operating temperature: **5° ÷ 45° C**
 Electronic sensor with M12 swivel connector, from 0° to 90°
 Supply voltage: **10 ÷ 30 Vdc**
 IP code: **IP 65**

** : MISSING DIMENSION TO BE DEFINED ACCORDING TO CUSTOMER SPECIFICATIONS

*** : TOLERANCE BETWEEN DOWEL HOLES ± 0,02, BETWEEN SCREW HOLES ± 0,1

X= metal sheet

Y = clamping range (X + 1,2 mm Max)

Subject to technical modifications without notice