

## USC40J\_1\_\_K0

5 7

### 5 PIN DIAMETER

- 1 <= Ø 19 mm
- 2 = Ø 20 mm
- 3 = Ø 25 mm
- 4 = Ø 30 mm
- 5 = Ø 35 mm
- 6 = Ø 40 mm

For pin Ø outside the mentioned range please contact our Sales Dept.

### 7 PROGRESSIVE NUMBERING

Progressive numbers for special products are assigned by the Sales Dept.

Bore Ø	Clamping force	Weight (reference plate and pin not included)
40 mm	900 N	1,3 Kg

Min./Max. operating pressure: **0,4 / 0,6 MPa**  
 Operating temperature: **5° ÷ 45° C**  
 Electronic sensor with M12 swivel connector, from 0° to 90°  
 Supply voltage: **10 ÷ 30 Vdc**  
 IP code: **IP 65**

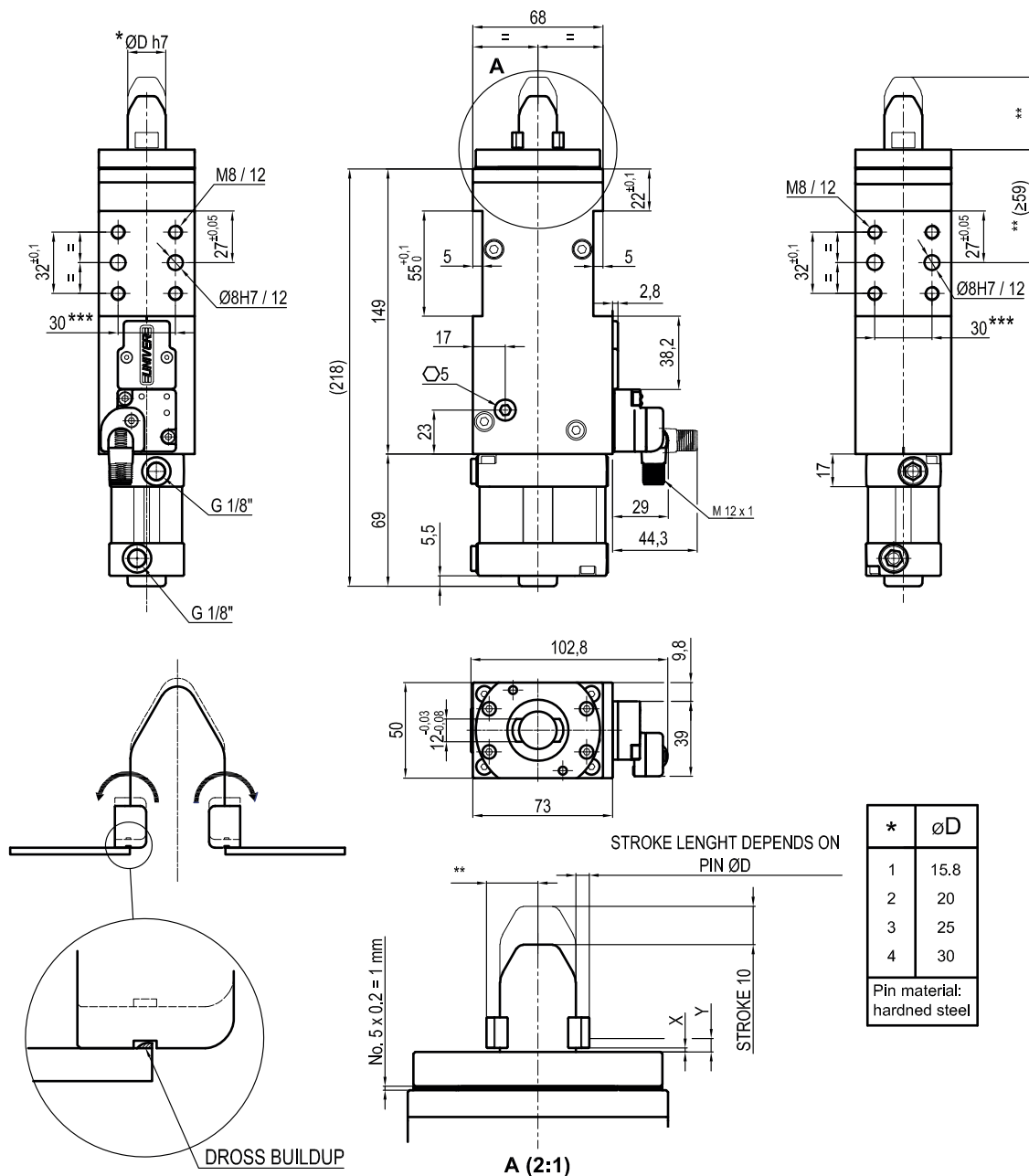
\*\* : MISSING DIMENSION TO BE DEFINED ACCORDING TO CUSTOMER SPECIFICATIONS

\*\*\* : TOLERANCE BETWEEN DOWEL HOLES ± 0,02, BETWEEN SCREW HOLES ± 0,1

X= metal sheet

Y = clamping range (X + 3 mm Max)

Subject to technical modifications without notice


**USC40R\_1\_\_K0**
**5 PIN DIAMETER**
**7 PROGRESSIVE NUMBERING**
**5 7**

- 1 <= Ø 19 mm  
 2 = Ø 20 mm  
 3 = Ø 25 mm  
 4 = Ø 30 mm  
 5 = Ø 35 mm  
 6 = Ø 40 mm

For pin Ø outside the mentioned range  
 please contact our Sales Dept.

Progressive numbers for special  
 products are assigned by the Sales Dept.

Bore Ø	Clamping force	Weight (reference plate and pin not included)
40 mm	900 N	1,3 Kg

Min./Max. operating pressure: **0,4 / 0,6 MPa**  
 Operating temperature: **5° ÷ 45° C**  
 Electronic sensor with M12 swivel connector, from 0° to 90°  
 Supply voltage: **10 ÷ 30 Vdc**  
 IP code: **IP 65**

\*\* : MISSING DIMENSION TO BE DEFINED ACCORDING TO CUSTOMER SPECIFICATIONS

\*\*\* : TOLERANCE BETWEEN DOWEL HOLES ± 0,02, BETWEEN SCREW HOLES ± 0,1

**X= metal sheet**

**Y = clamping range (X + 3 mm Max)**

Subject to technical modifications without notice