

UPR050873FEE_0

6 PROGRESSIVE NUMBER

7 CONNECTIONS

6 7

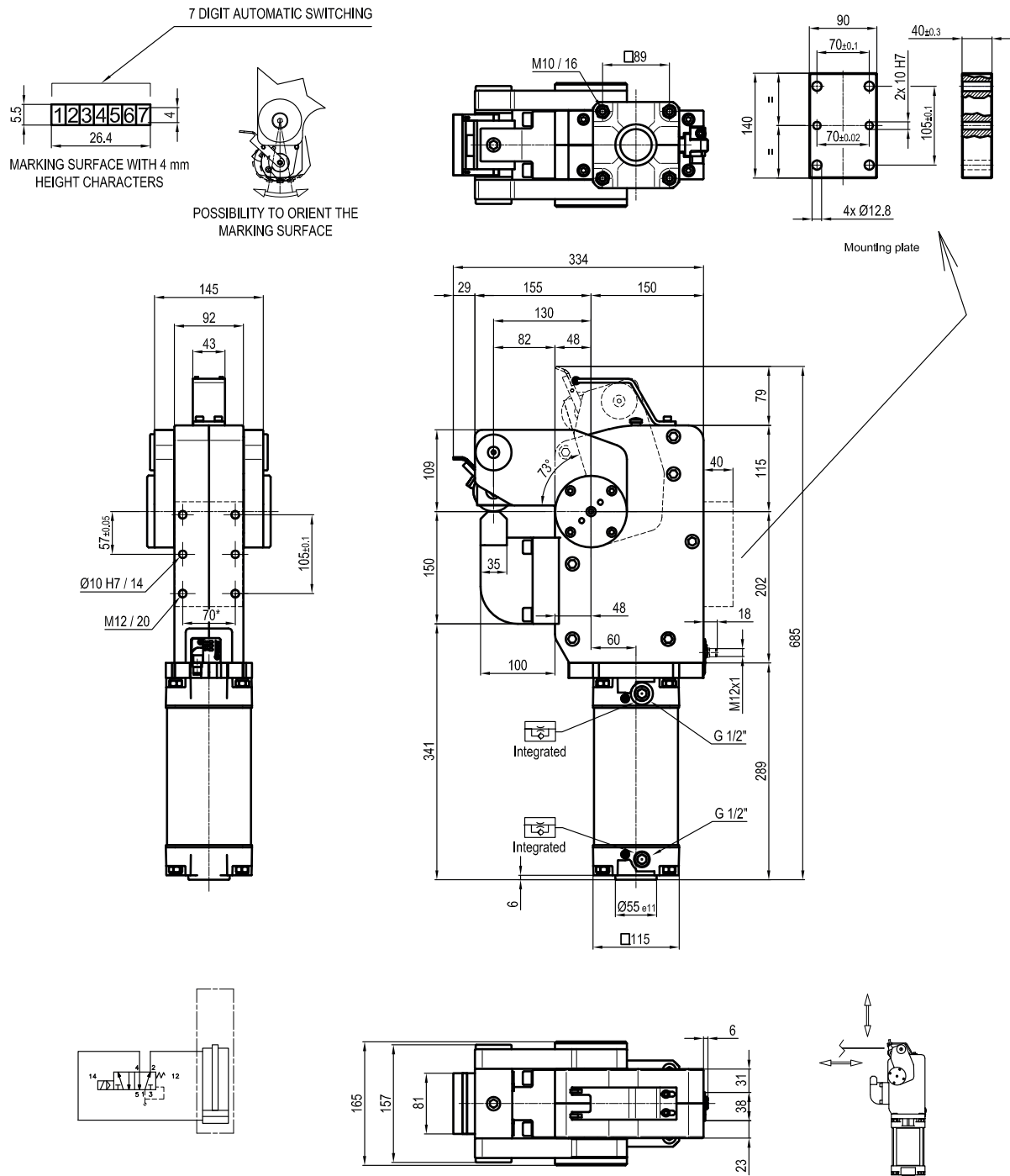
EE = Standard version
For special versions progressive numbers are assigned by the Sales dept.

D = Right (sensor right side)
F = Front side (in front of the sensor)
P = Rear side (same side as sensor)
S = Left (sensor left side)

Size	Cylinder	Moment 0,5 MPa	Marking force 0,5 MPa	Weight	Air/cycle 0,5 MPa
500	100	5000 Nm	38,5 KN	71 Kg	11,2 NI

Min./Max. operating pressure: **0,4 / 0,6 MPa**
Operating temperature: **5° ± 45° C**
Opening angle: **73°**
Possibility to orientate the marking surface
Electronic sensor with M12 swivel connector, from 0° to 90°
Supply voltage: **10 + 30 Vdc**
IP code: **IP 65**

* : TOLERANCE BETWEEN DOWEL HOLES ± 0,02, BETWEEN SCREW HOLES ± 0,1



UPR050873MEE_0

6 PROGRESSIVE NUMBER

7 CONNECTIONS

6 7

EE = Standard version
For special versions progressive numbers are assigned by the Sales dept.

D = Right (sensor right side)
F = Front side (in front of the sensor)
P = Rear side (same side as sensor)
S = Left (sensor left side)

Size	Cylinder	Moment 0,5 MPa	Marking force 0,5 MPa	Weight	Air/cycle 0,5 MPa
500	100	5000 Nm	38,5 KN	71 Kg	11,2 NI

Min./Max. operating pressure: **0,4 / 0,6 MPa**
Operating temperature: **5° ± 45° C**
Opening angle: **73°**
Possibility to orientate the marking surface
Electronic sensor with M12 swivel connector, from 0° to 90°
Supply voltage: **10 ± 30 Vdc**
IP code: **IP 65**

* : TOLERANCE BETWEEN DOWEL HOLES ± 0,02, BETWEEN SCREW HOLES ± 0,1

Subject to technical modifications without notice

