

UPD0208ORF\_\_F0

6

6 CHARACTER

00 = STANDARD VERSION  
(without character)

Progressive numbers are assigned  
by the Sales dept.

Bore Ø	Clamping moment (0,5 MPa)	Marking force (0,5 MPa)	Air/Cycle (0,5 MPa)	Weight
63 mm	250 Nm	2 KN	3,4 NI	6,1 Kg

Min./Max. operating pressure: **0,4 / 0,6 MPa**

Operating temperature: **5°÷ 45° C**

Opening angle: **adjustable from 0° to 120°**

Electronic sensor with M12 swivel connector, from 0° to 90°

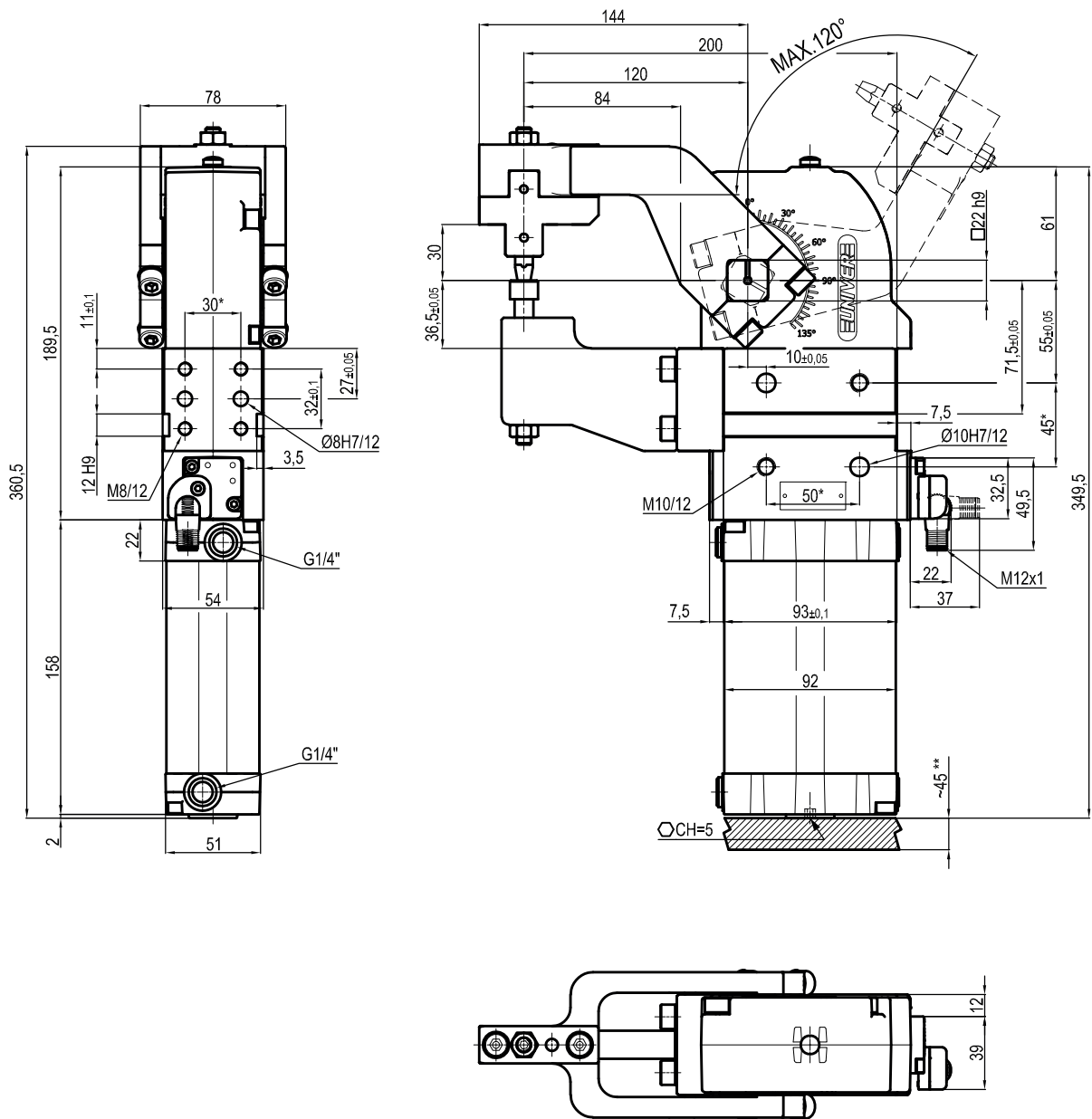
IP code: **IP 65**

Pneumatic ports on both sides

\* : TOLERANCE BETWEEN DOWELS ± 0,02, BETWEEN SCREW HOLES ± 0,1

\*\*\*: AREA TO ACCES ANGLE ADJUSTMENT

Subject to technical modifications without notice



UPD0208ORM\_\_F0

6

6 CHARACTER

00 = STANDARD VERSION  
(without character)

Progressive numbers are assigned  
by the Sales dept.

Bore Ø	Clamping moment (0,5 MPa)	Marking force (0,5 MPa)	Air/Cycle (0,5 MPa)	Weight
63 mm	250 Nm	2 KN	3,4 NI	6,1 Kg

Min./Max. operating pressure: **0,4 / 0,6 MPa**  
 Operating temperature: **5°÷ 45° C**  
 Opening angle: **adjustable from 0° to 120°**  
 Electronic sensor with M12 swivel connector, from 0° to 90°  
 IP code: **IP 65**  
 Pneumatic ports on both sides

\* : TOLERANCE BETWEEN DOWELS ± 0,02, BETWEEN SCREW HOLES ± 0,1  
 \*\*\*: AREA TO ACCES ANGLE ADJUSTMENT

Subject to technical modifications without notice