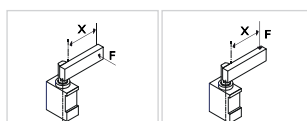

**ULZ40040A\_K0**
**6 ROD ORIENTATION**
**6**

E = East  
O = West  
N = North  
S = South



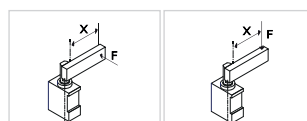
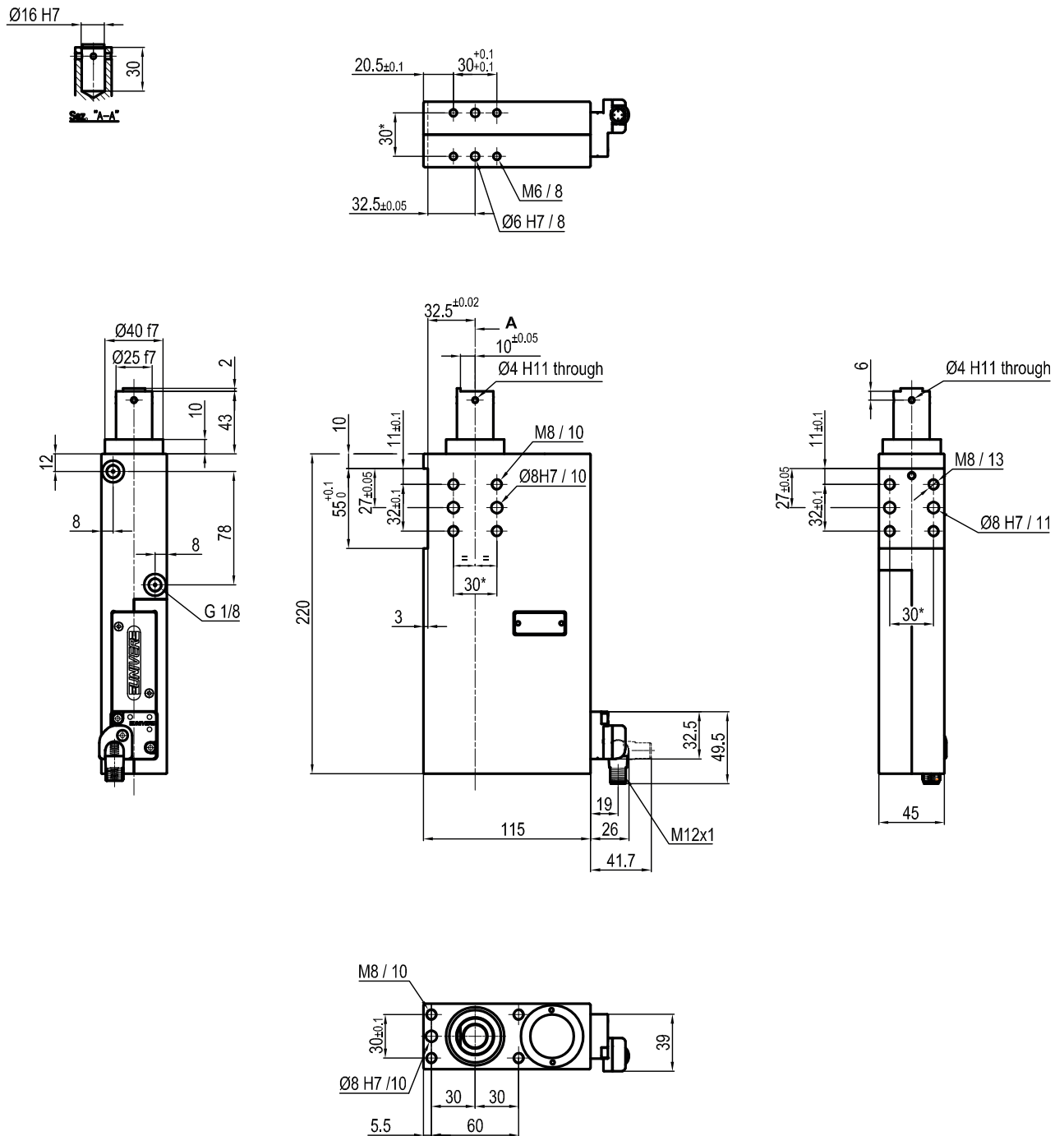
Bore Ø	Min. pull force 0,5 MPa	Max. push force 0,5 MPa	Max. torque 6 Nm X=100 mm	Max. deflection moment 7,5 Nm X=100 mm	Weight
40 mm	200 N	3100 N	± 0,06 mm	± 0,03 mm	5,7 Kg

Min./Max. operating pressure: **0,4 / 0,6 MPa**  
 Operating temperature: **5° ÷ 45° C**  
 Strokes in mm: **40**  
 Electronic sensor with M12 swivel connector, from 0° to 90°  
 Supply voltage: **10 ÷ 30 Vdc**  
 IP code: **IP 65**

\* : TOLERANCE BETWEEN DOWEL HOLES ± 0,02, BETWEEN SCREW HOLES ± 0,1

Subject to technical modifications without notice

Rev. 02 07.06.21



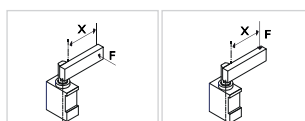
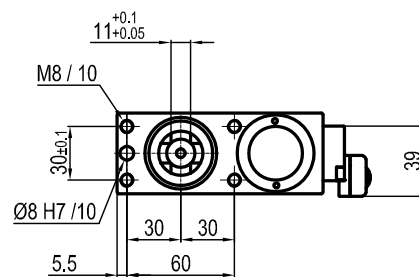
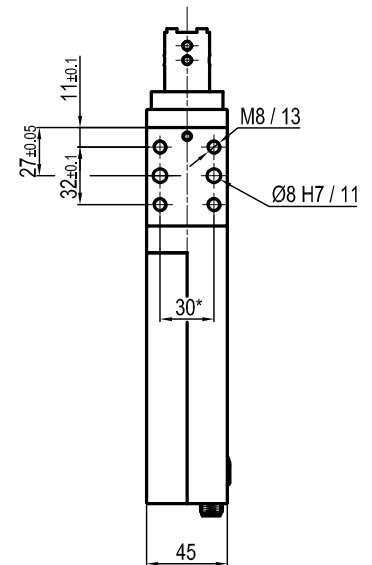
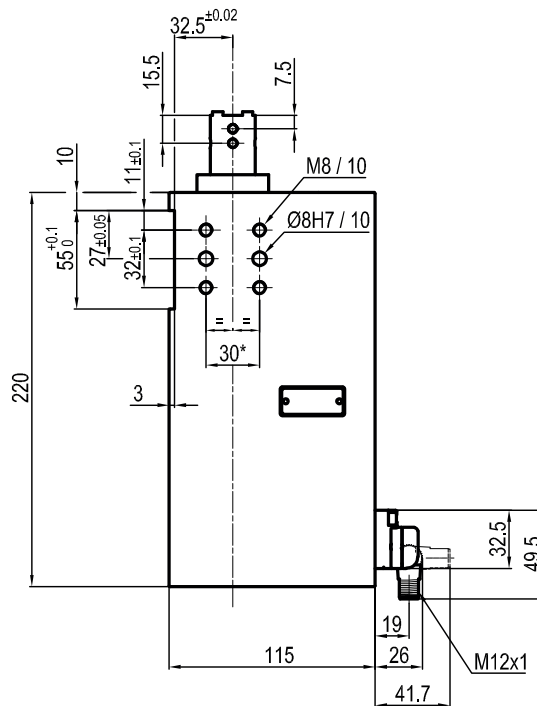
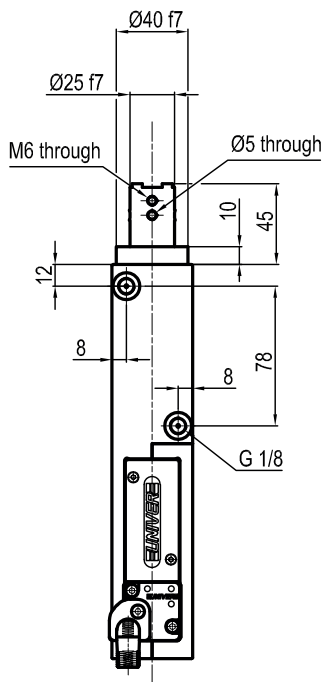
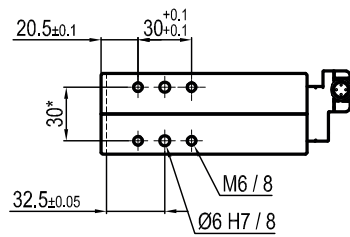
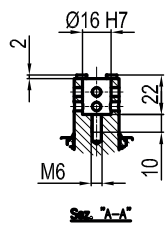
Bore Ø	Min. pull force 0,5 MPa	Max. push force 0,5 MPa	Max. torque 6 Nm X=100 mm	Max. deflection moment 7,5 Nm X=100 mm	Weight
40 mm	200 N	3100 N	± 0,06 mm	± 0,03 mm	5,7 Kg

Min./Max. operating pressure: **0,4 / 0,6 MPa**  
 Operating temperature: **5° ÷ 45° C**  
 Strokes in mm: **40**  
 Electronic sensor with M12 swivel connector, from 0° to 90°  
 Supply voltage: **10 ÷ 30 Vdc**  
 IP code: **IP 65**

\* : TOLERANCE BETWEEN DOWEL HOLES ± 0,02, BETWEEN SCREW HOLES ± 0,1

Subject to technical modifications without notice

Rev. 02 07.06.21



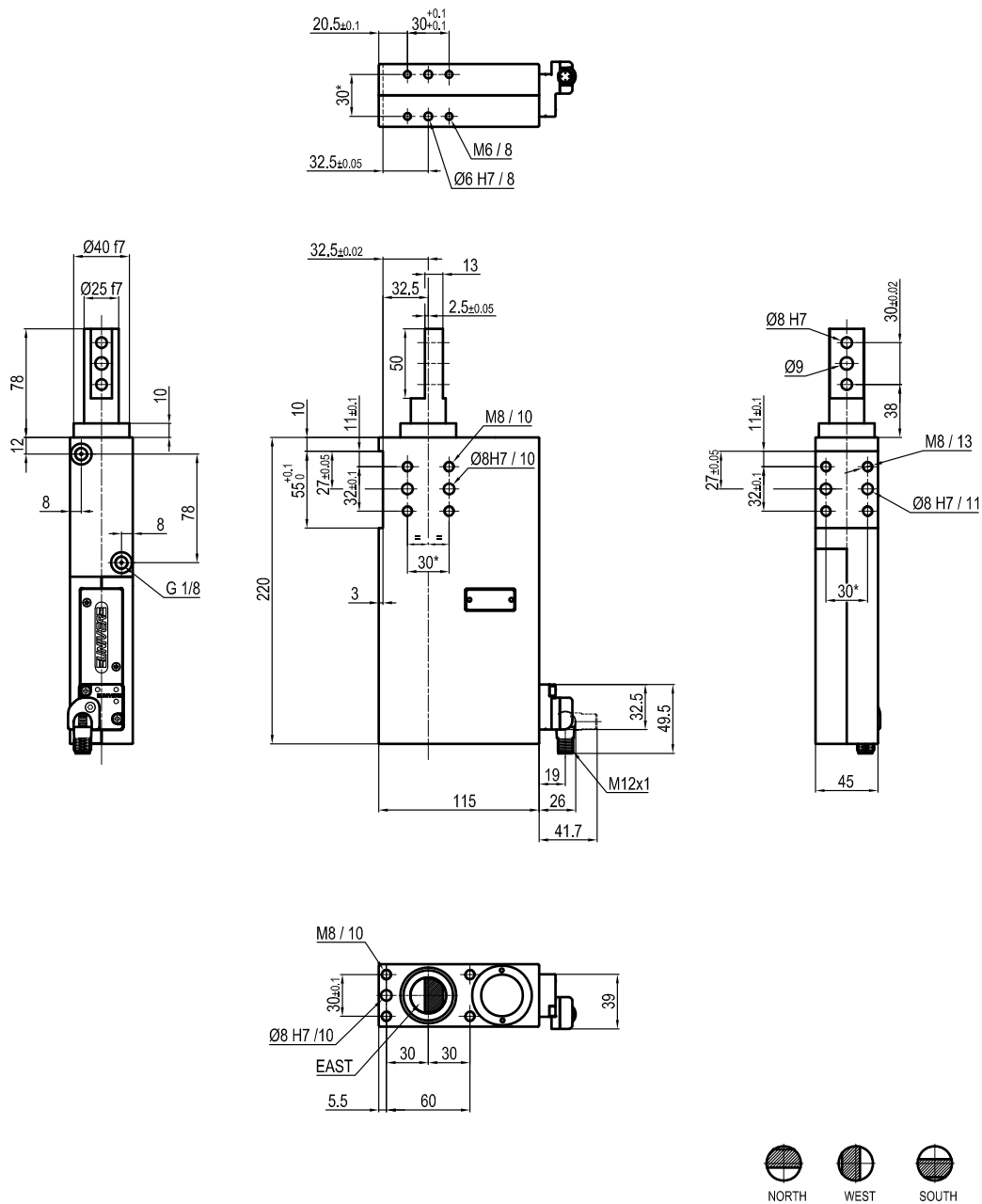
Bore Ø	Min. pull force 0,5 MPa	Max. push force 0,5 MPa	Max. torque 6 Nm X=100 mm	Max. deflection moment 7,5 Nm X=100 mm	Weight
40 mm	200 N	3100 N	± 0,06 mm	± 0,03 mm	5,7 Kg

Min./Max. operating pressure: **0,4 / 0,6 MPa**  
 Operating temperature: **5° ÷ 45° C**  
 Strokes in mm: **40**  
 Electronic sensor with M12 swivel connector, from 0° to 90°  
 Supply voltage: **10 ÷ 30 Vdc**  
 IP code: **IP 65**

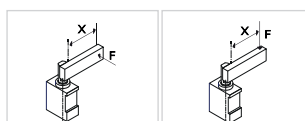
\* : TOLERANCE BETWEEN DOWEL HOLES ± 0,02, BETWEEN SCREW HOLES ± 0,1

Subject to technical modifications without notice

Rev. 02 07.06.21


**ULZ40040D\_K0**
**6 ROD ORIENTATION**
**6**

E = East  
 O = West  
 N = North  
 S = South



Bore Ø	Min. pull force 0,5 MPa	Max. push force 0,5 MPa	Max. torque 6 Nm X=100 mm	Max. deflection moment 7,5 Nm X=100 mm	Weight
40 mm	200 N	3100 N	± 0,06 mm	± 0,03 mm	5,7 Kg

Min./Max. operating pressure: **0,4 / 0,6 MPa**  
 Operating temperature: **5° ÷ 45° C**  
 Strokes in mm: **40**  
 Electronic sensor with M12 swivel connector, from 0° to 90°  
 Supply voltage: **10 ÷ 30 Vdc**  
 IP code: **IP 65**

\* : TOLERANCE BETWEEN DOWEL HOLES ± 0,02, BETWEEN SCREW HOLES ± 0,1

Subject to technical modifications without notice

Rev. 01 07.06.21