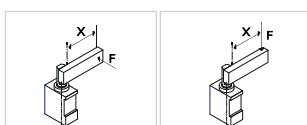


ULL50040A_K0

6 ROD ORIENTATION

6

E = East
 O = West
 N = North
 S = South



| Size | Max. torque 6 Nm X=100 mm | Max. deflection moment 7,5 Nm X=100 mm | Weight |
|-------|---------------------------------|--|--------|
| 50 mm | ± 0,06 mm | ± 0,03 mm | 2,5 Kg |

Operating temperature: 5°÷ 45° C

Strokes in mm.: 40

With manual lever

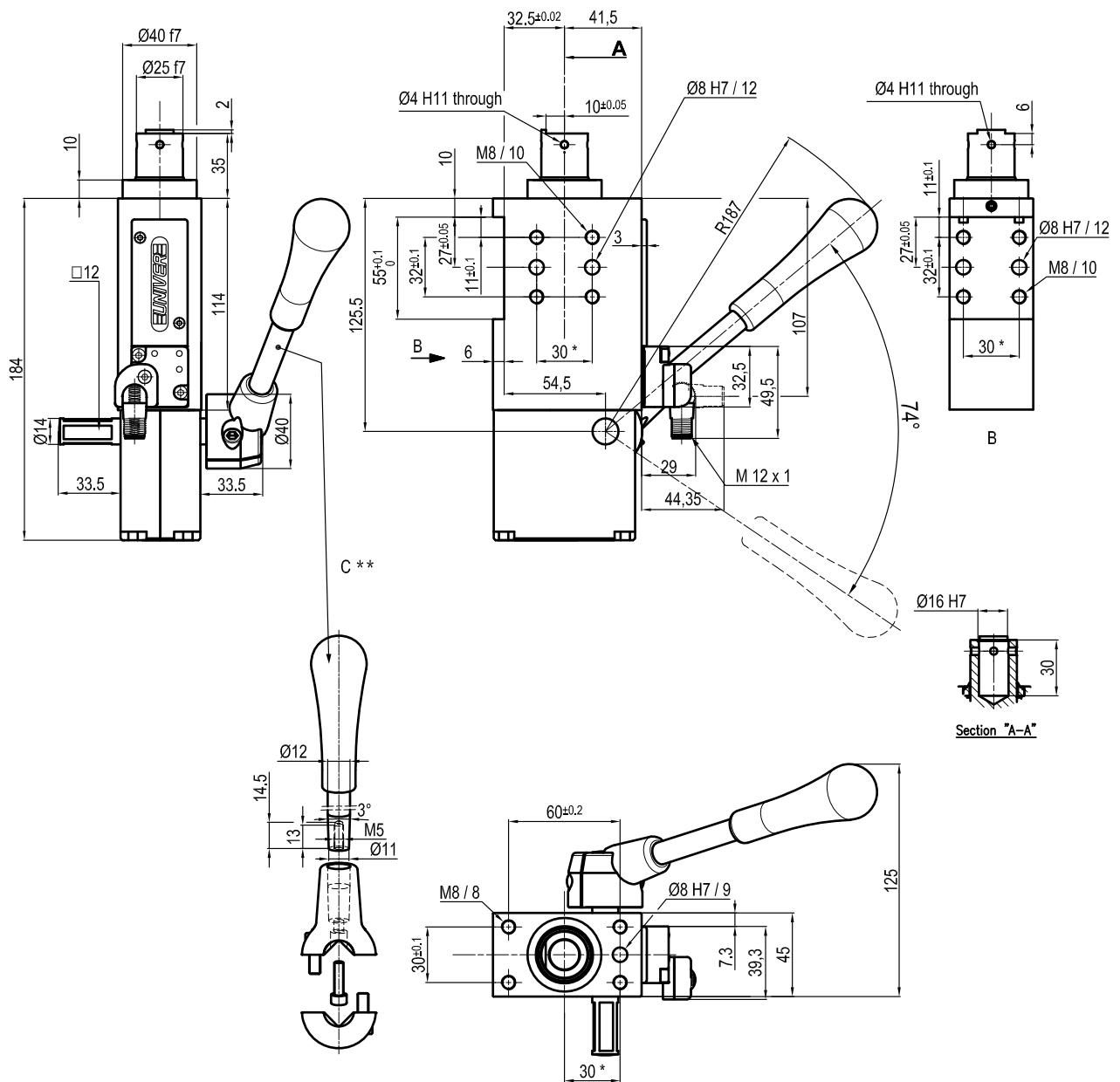
Electronic sensor with M12 swivel connector, from 0° to 90°

Supply voltage: 10 ÷ 30 Vdc

IP code: IP 65

* : TOLERANCE BETWEEN DOWELS ± 0,02, BETWEEN SCREW HOLES ± 0,1
 ** : DIMENSIONS TO BE RESPECTED IN CASE OTHER MANUAL LEVERS ARE USED

Subject to technical modifications without notice



| Size | Max. torque 6 Nm X=100 mm | Max. deflection moment 7,5 Nm X=100 mm | Weight |
|-------|---------------------------------|--|--------|
| 50 mm | ± 0,06 mm | ± 0,03 mm | 2,5 Kg |

Operating temperature: 5°÷ 45° C

Strokes in mm.: 40

With manual lever

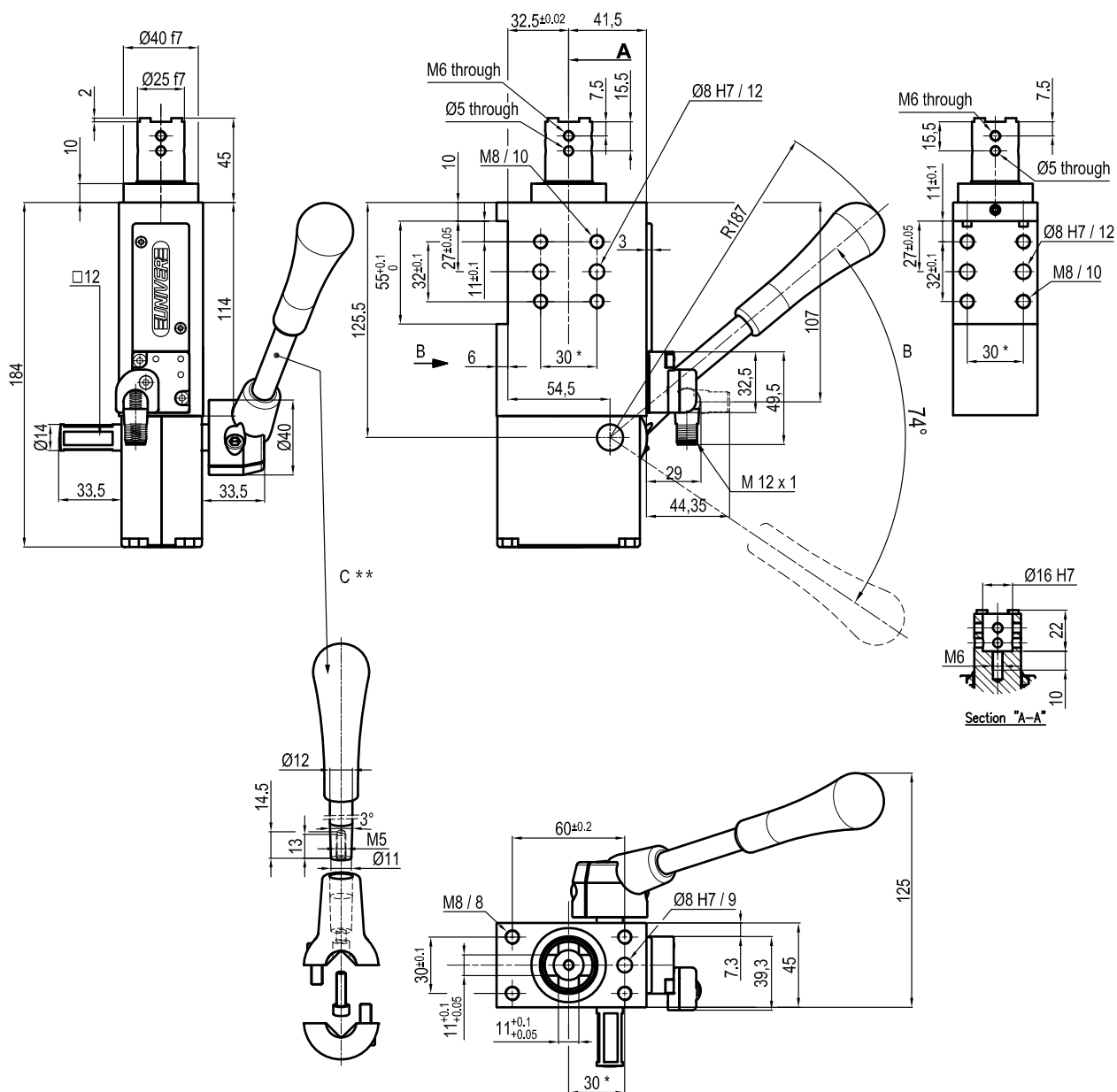
Electronic sensor with M12 swivel connector, from 0° to 90°

Supply voltage: 10 ÷ 30 Vdc

IP code: IP 65

* : TOLERANCE BETWEEN DOWELS ± 0,02, BETWEEN SCREW HOLES ± 0,1

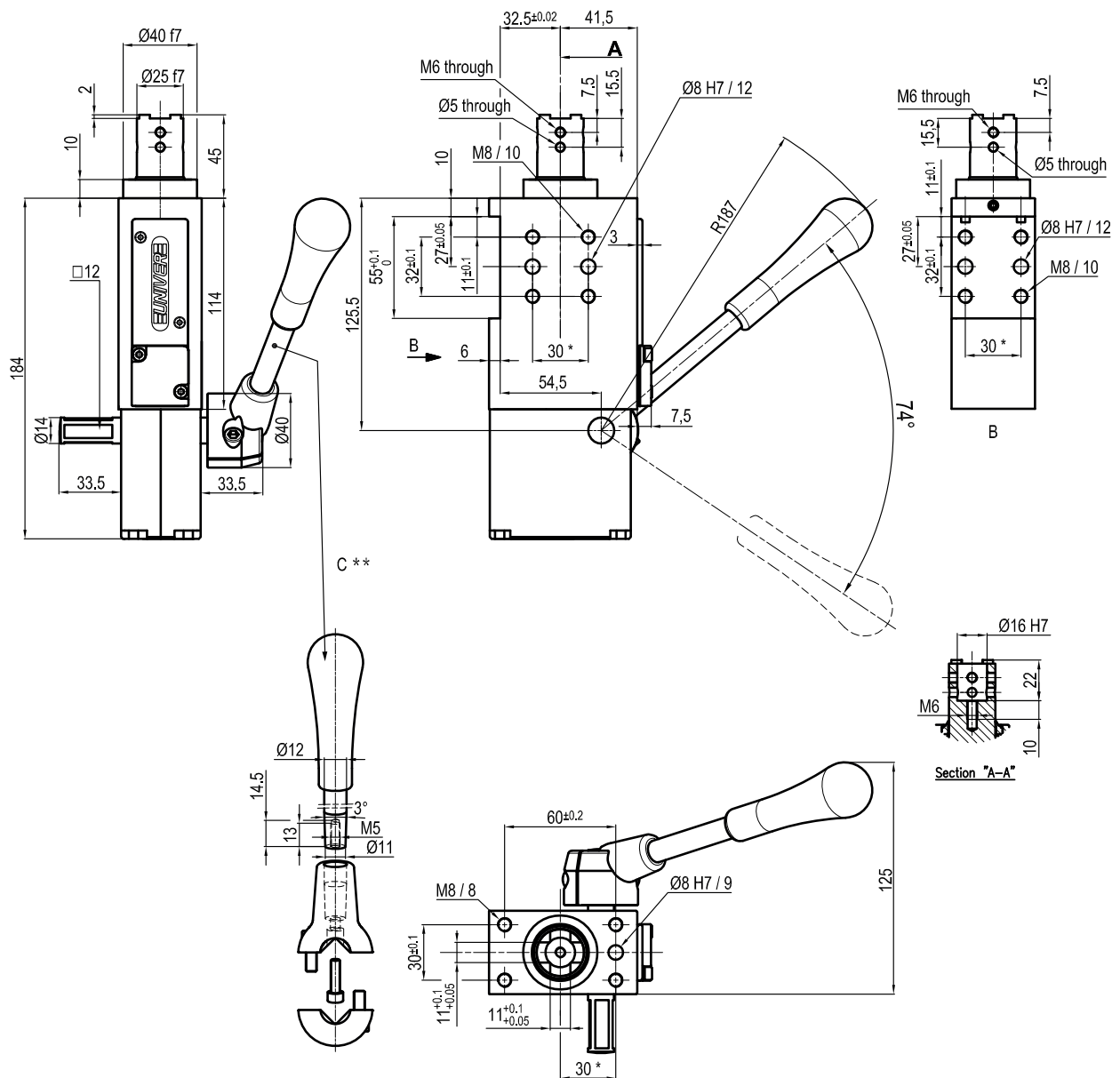
** : DIMENSIONS TO BE RESPECTED IN CASE OTHER MANUAL LEVERS ARE USED



| Size | Max. torque 6 Nm X=100 mm | Max. deflection moment 7,5 Nm X=100 mm | Weight |
|-------|---------------------------------|--|--------|
| 50 mm | ± 0,06 mm | ± 0,03 mm | 2,5 Kg |

Operating temperature: 5°÷ 45° C
 Strokes in mm.: 40
 With manual lever
 Electronic sensor with M12 swivel connector, from 0° to 90°
 Supply voltage: 10 ÷ 30 Vdc
 IP code: IP 65

*: TOLERANCE BETWEEN DOWELS ± 0,02, BETWEEN SCREW HOLES ± 0,1
 **: DIMENSIONS TO BE RESPECTED IN CASE OTHER MANUAL LEVERS ARE USED



| Size | Max. torque 6 Nm X=100 mm | Max. deflection moment 7,5 Nm X=100 mm | Weight |
|-------|---------------------------------|--|--------|
| 50 mm | ± 0,06 mm | ± 0,03 mm | 2,5 Kg |

 Operating temperature: **5° ± 45° C**

 Strokes in mm.: **40**

With manual lever

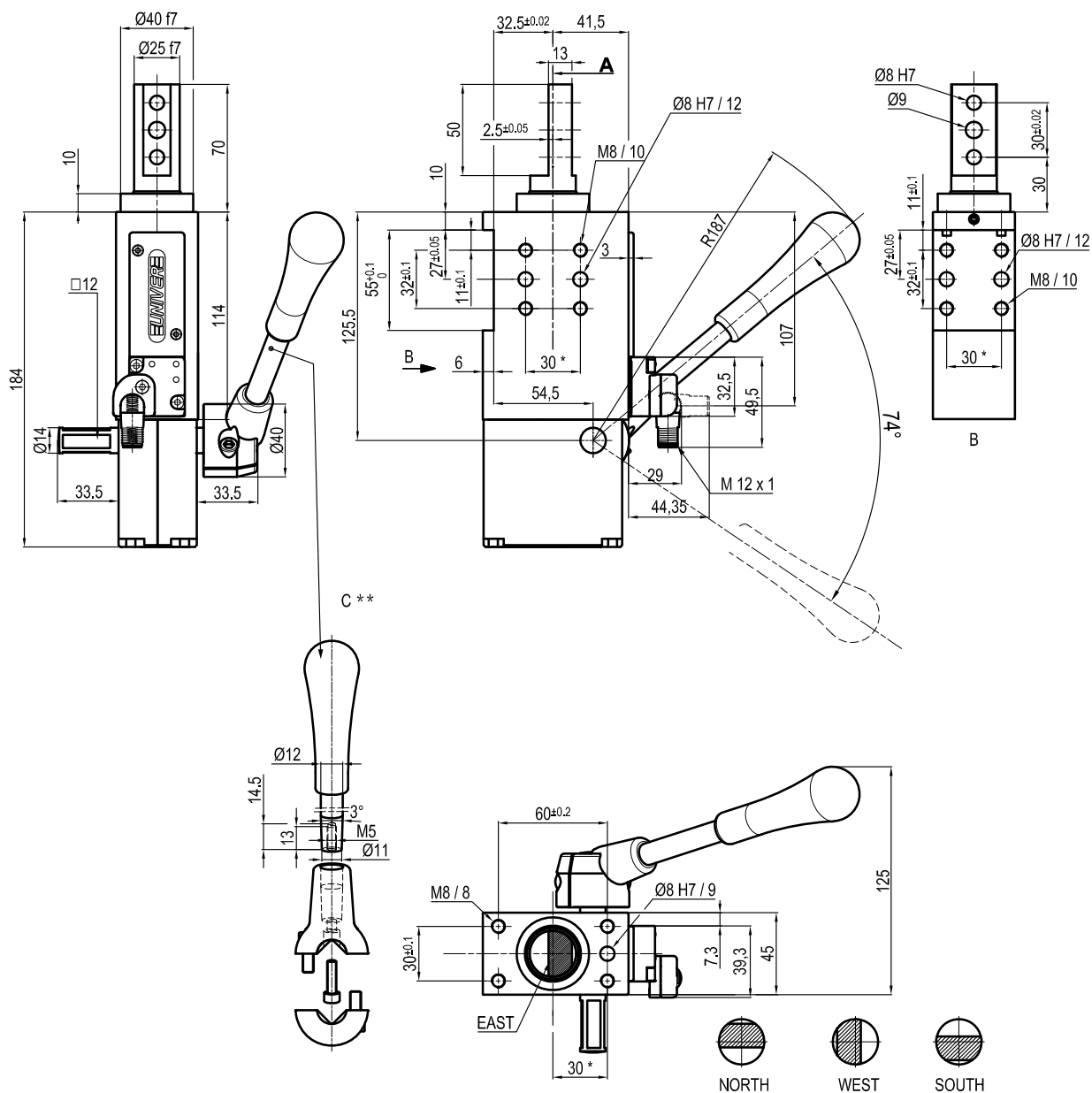
Electronic sensor with M12 swivel connector, from 0° to 90°

 Supply voltage: **10 ÷ 30 Vdc**

 IP code: **IP 65**

*: TOLERANCE BETWEEN DOWELS ± 0,02, BETWEEN SCREW HOLES ± 0,1

**: DIMENSIONS TO BE RESPECTED IN CASE OTHER MANUAL LEVERS ARE USED

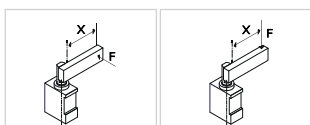


ULL50040D_K0

6 ROD ORIENTATION

6

E = East
O = West
N = North
S = South



| Size | Max. torque 6 Nm X=100 mm | Max. deflection moment 7,5 Nm X=100 mm | Weight |
|-------|---------------------------------|--|--------|
| 50 mm | ± 0,06 mm | ± 0,03 mm | 2,5 Kg |

Operating temperature: 5°÷ 45° C

Strokes in mm.: 40

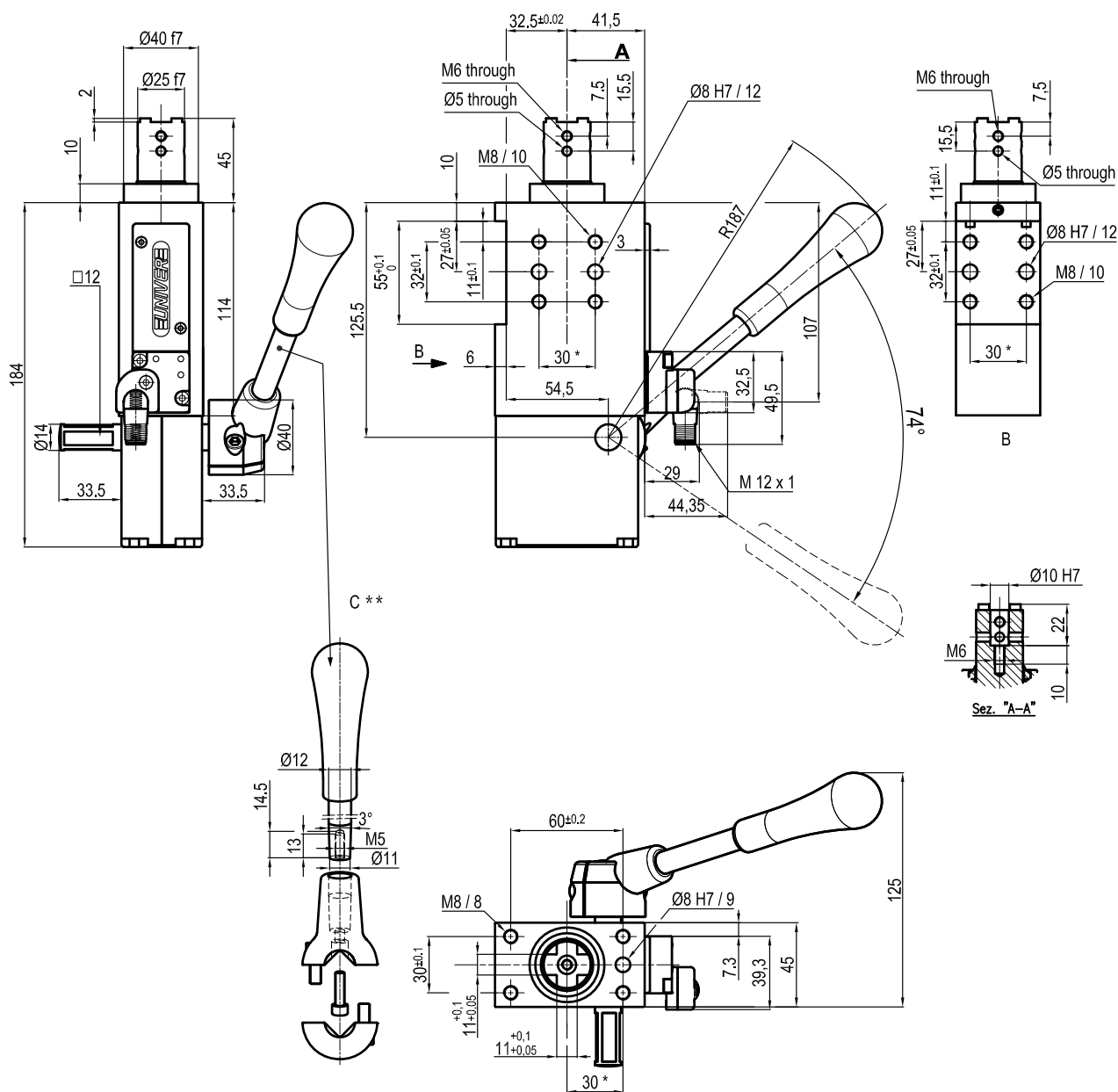
With manual lever

Electronic sensor with M12 swivel connector, from 0° to 90°

Supply voltage: 10 ÷ 30 Vdc

IP code: IP 65

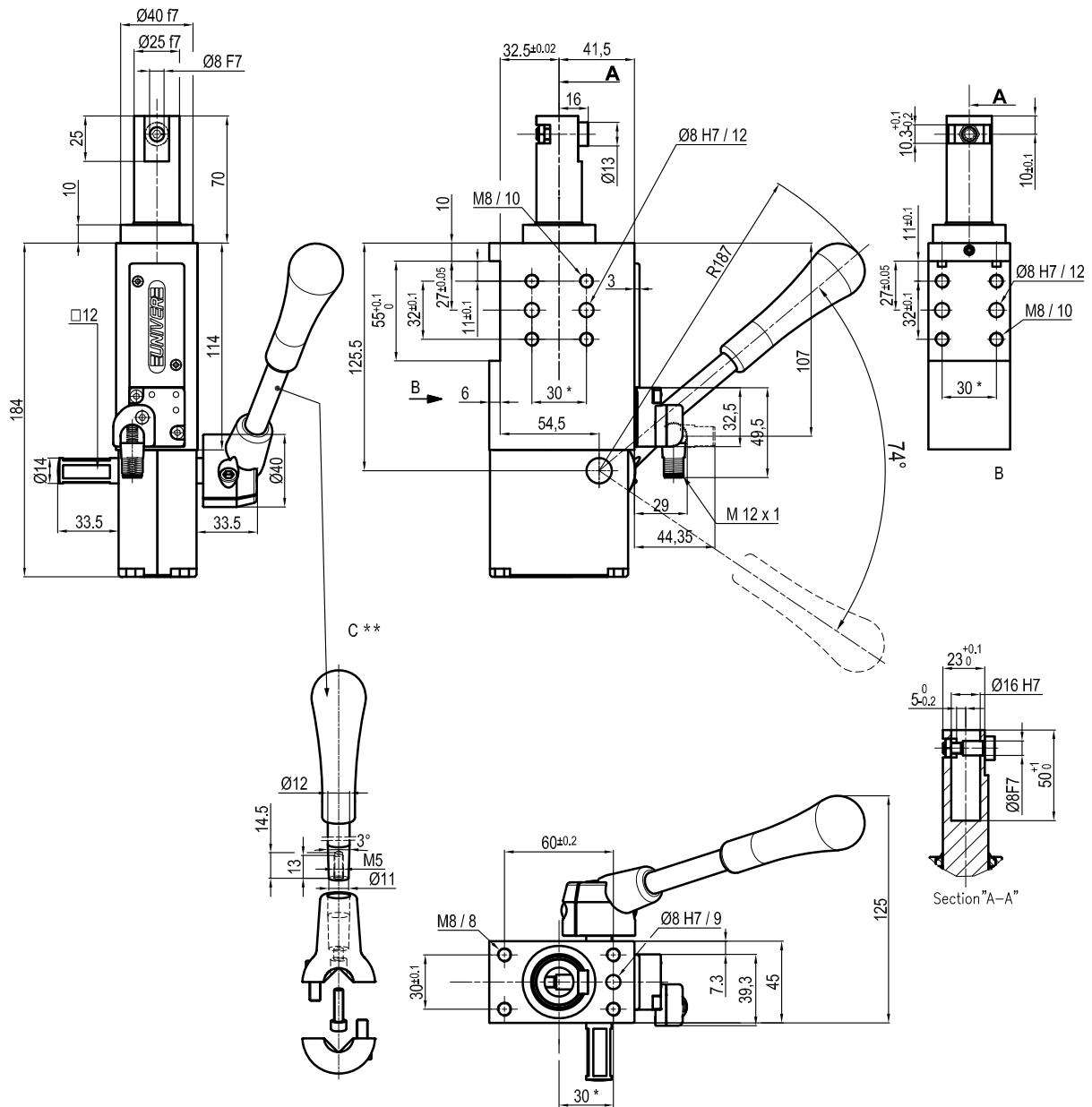
* : TOLERANCE BETWEEN DOWELS ± 0,02, BETWEEN SCREW HOLES ± 0,1
** : DIMENSIONS TO BE RESPECTED IN CASE OTHER MANUAL LEVERS ARE USED



| Size | Max. torque 6 Nm X=100 mm | Max. deflection moment 7,5 Nm X=100 mm | Weight |
|-------|---------------------------------|--|--------|
| 50 mm | ± 0,06 mm | ± 0,03 mm | 2,5 Kg |

Operating temperature: **5° ÷ 45° C**
 Strokes in mm.: **40**
 With manual lever
 Electronic sensor with M12 swivel connector, from 0° to 90°
 Supply voltage: **10 ÷ 30 Vdc**
 IP code: **IP 65**

*: TOLERANCE BETWEEN DOWELS ± 0,02, BETWEEN SCREW HOLES ± 0,1
 **: DIMENSIONS TO BE RESPECTED IN CASE OTHER MANUAL LEVERS ARE USED



| Size | Max. torque 6 Nm X=100 mm | Max. deflection moment 7,5 Nm X=100 mm | Weight |
|-------|---------------------------------|--|--------|
| 50 mm | ± 0,06 mm | ± 0,03 mm | 2,5 Kg |

Operating temperature: 5° ± 45° C

Strokes in mm.: 40

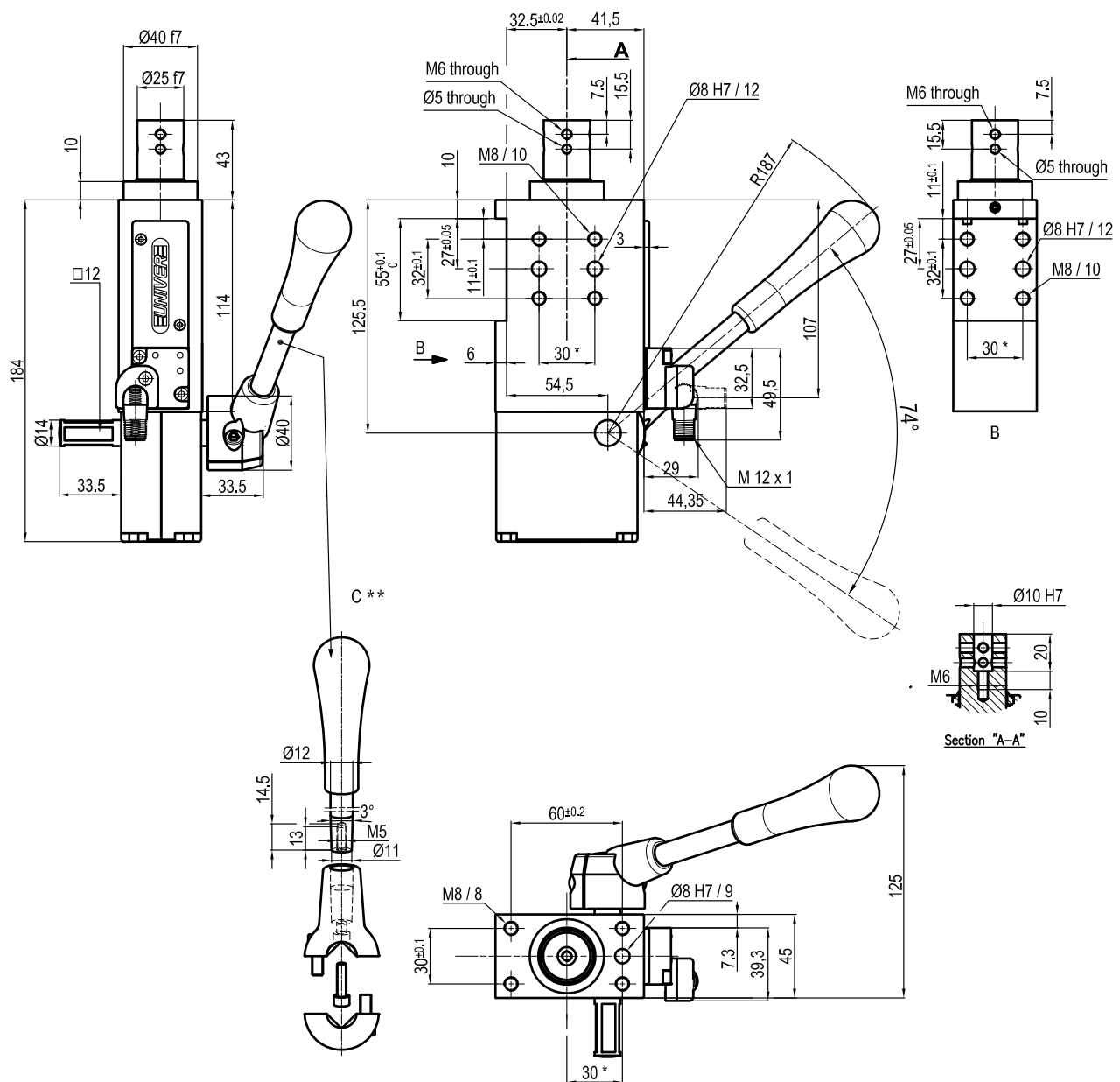
With manual lever

Electronic sensor with M12 swivel connector, from 0° to 90°

Supply voltage: 10 ÷ 30 Vdc

IP code: IP 65

* : TOLERANCE BETWEEN DOWELS ± 0,02, BETWEEN SCREW HOLES ± 0,1
 ** : DIMENSIONS TO BE RESPECTED IN CASE OTHER MANUAL LEVERS ARE USED



| Size | Max. torque 6 Nm X=100 mm | Max. deflection moment 7,5 Nm X=100 mm | Weight |
|-------|---------------------------------|--|--------|
| 50 mm | ± 0,06 mm | ± 0,03 mm | 2,5 Kg |

Operating temperature: 5° ÷ 45° C

Strokes in mm.: 40

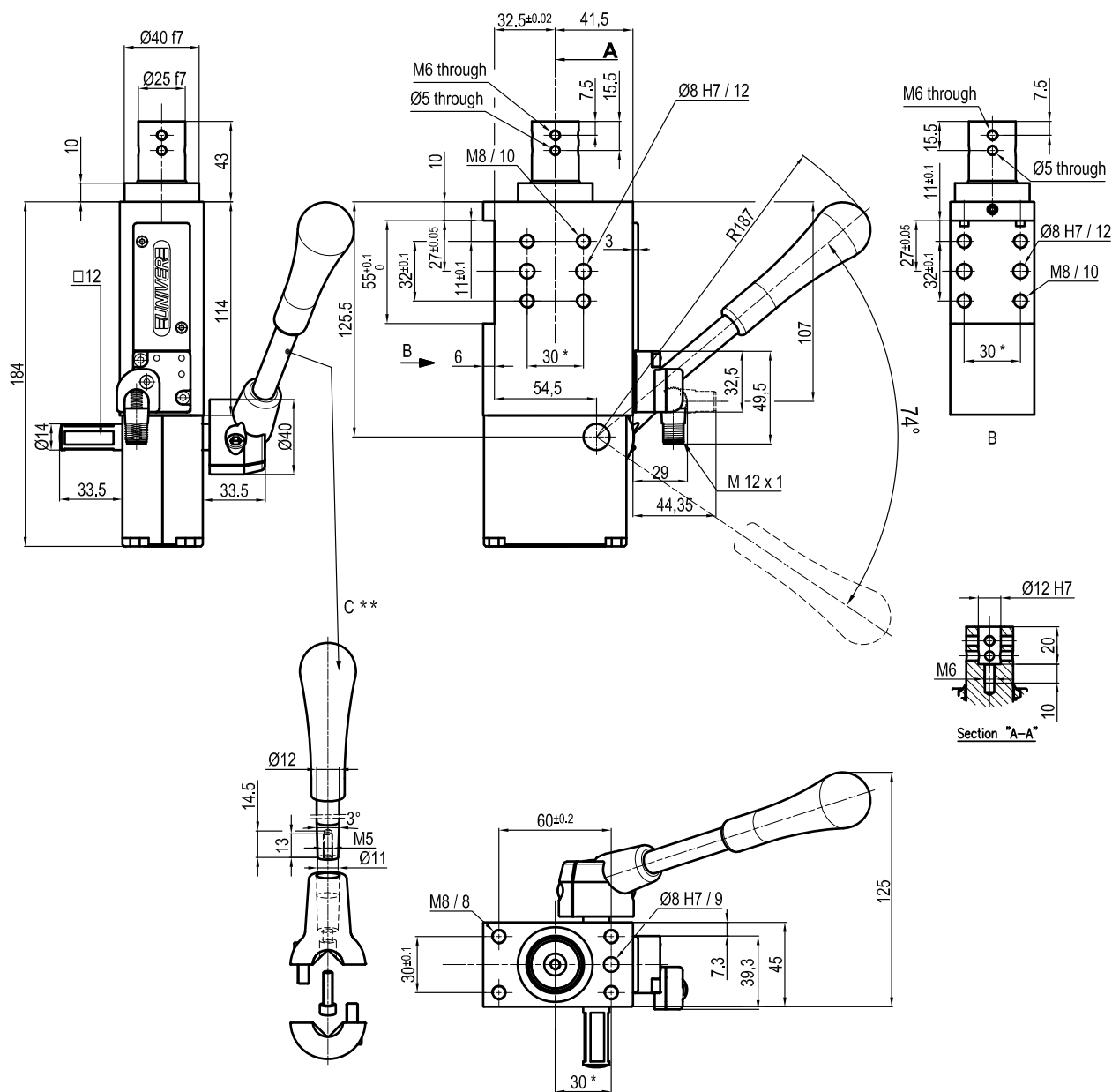
With manual lever

Electronic sensor with M12 swivel connector, from 0° to 90°

Supply voltage: 10 ÷ 30 Vdc

IP code: IP 65

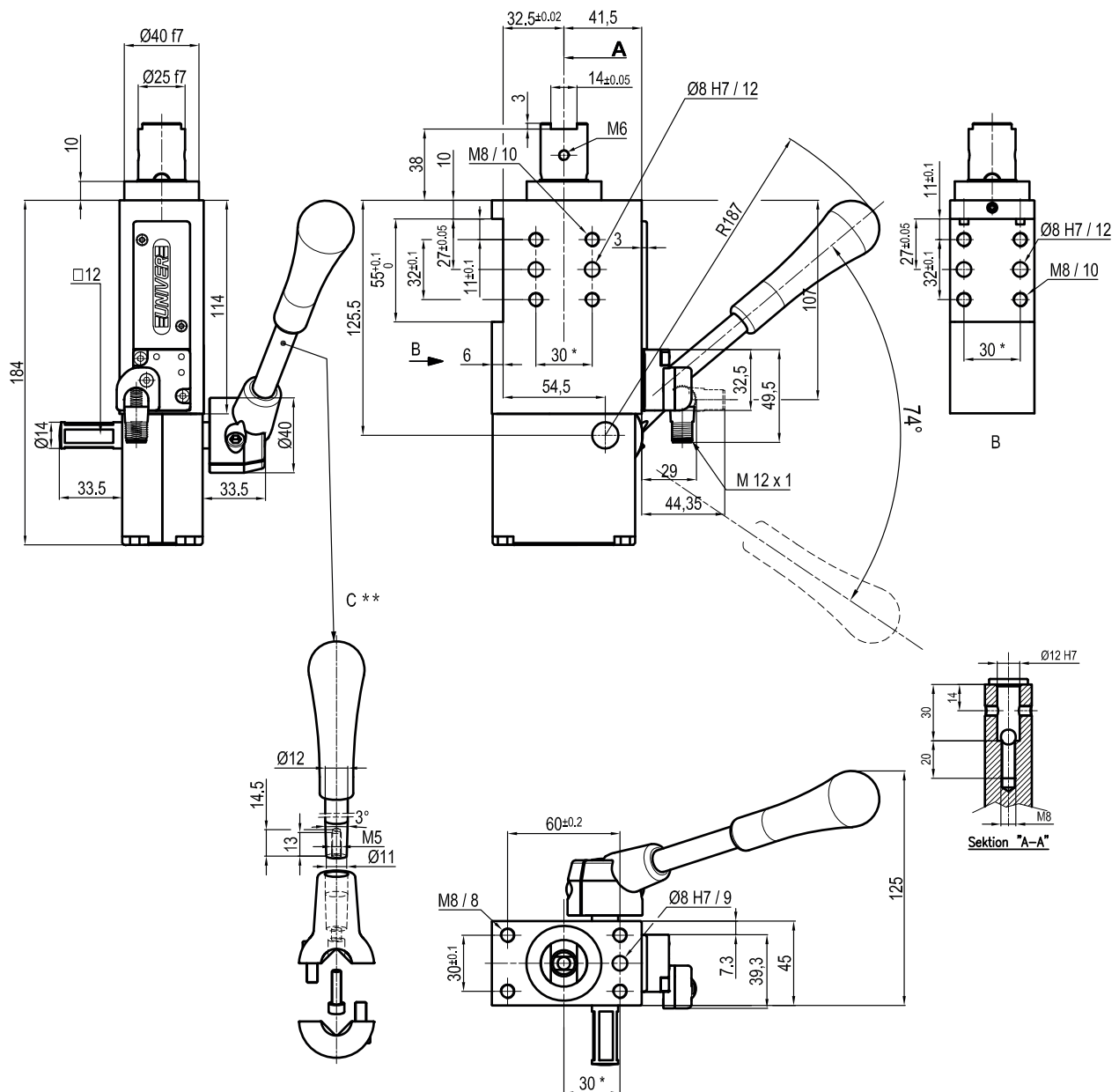
 *: TOLERANCE BETWEEN DOWELS ± 0,02, BETWEEN SCREW HOLES ± 0,1
 **: DIMENSIONS TO BE RESPECTED IN CASE OTHER MANUAL LEVERS ARE USED



| Size | Max. torque 6 Nm X=100 mm | Max. deflection moment 7,5 Nm X=100 mm | Weight |
|-------|---------------------------------|--|--------|
| 50 mm | ± 0,06 mm | ± 0,03 mm | 2,5 Kg |

Operating temperature: **5° ÷ 45° C**
 Strokes in mm.: **40**
 With manual lever
 Electronic sensor with M12 swivel connector, from 0° to 90°
 Supply voltage: **10 ÷ 30 Vdc**
 IP code: **IP 65**

*: TOLERANCE BETWEEN DOWELS ± 0,02, BETWEEN SCREW HOLES ± 0,1
 **: DIMENSIONS TO BE RESPECTED IN CASE OTHER MANUAL LEVERS ARE USED



| Size | Max. torque 6 Nm X=100 mm | Max. deflection moment 7,5 Nm X=100 mm | Weight |
|-------|---------------------------------|--|--------|
| 50 mm | ± 0,06 mm | ± 0,03 mm | 2,5 Kg |

Operating temperature: 5° ± 45° C

Strokes in mm.: 40

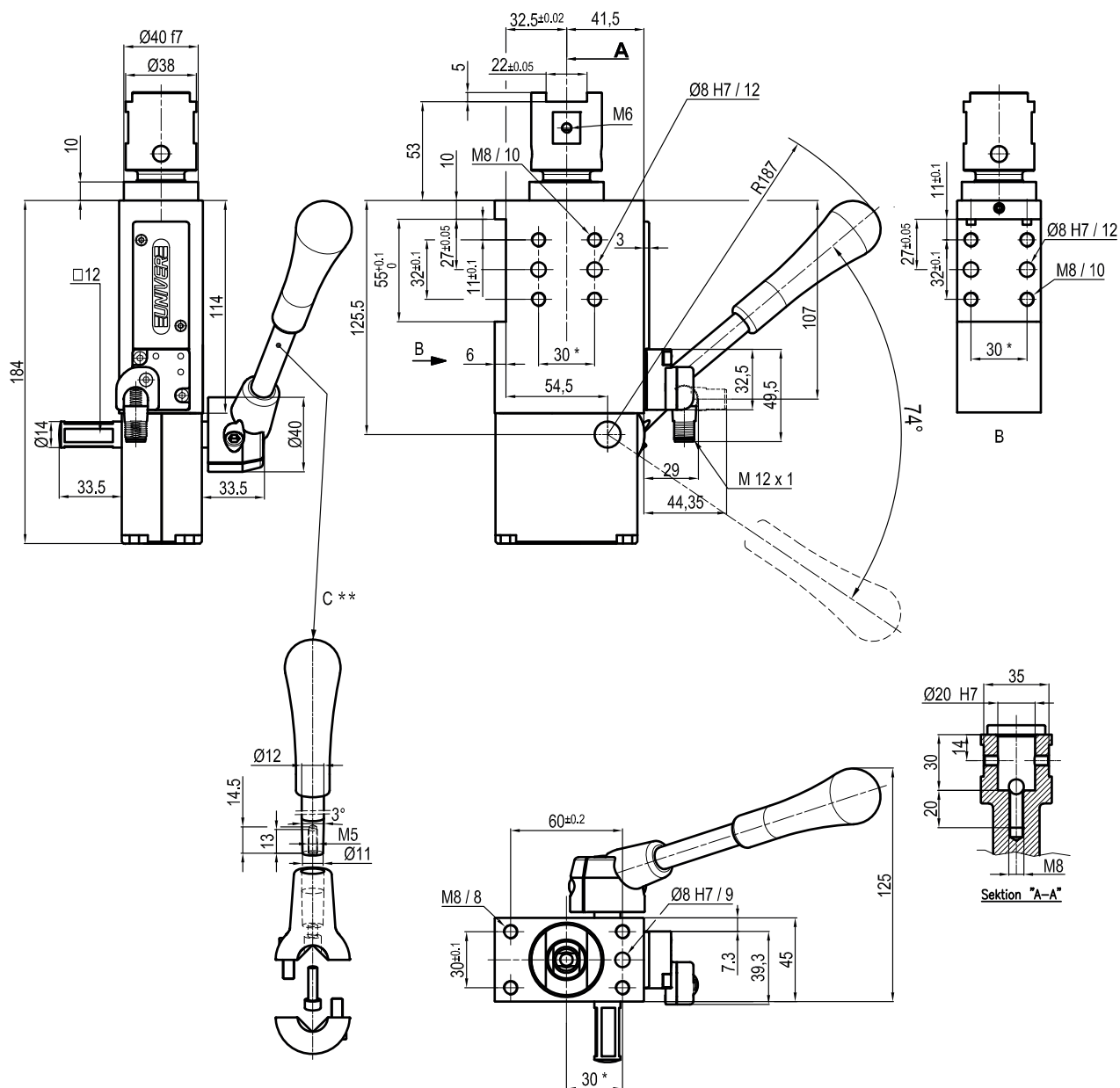
With manual lever

Electronic sensor with M12 swivel connector, from 0° to 90°

Supply voltage: 10 ÷ 30 Vdc

IP code: IP 65

* : TOLERANCE BETWEEN DOWELS ± 0,02, BETWEEN SCREW HOLES ± 0,1
 ** : DIMENSIONS TO BE RESPECTED IN CASE OTHER MANUAL LEVERS ARE USED



| Size | Max. torque 6 Nm X=100 mm | Max. deflection moment 7,5 Nm X=100 mm | Weight |
|-------|---------------------------------|--|--------|
| 50 mm | ± 0,06 mm | ± 0,03 mm | 2,5 Kg |

Operating temperature: **5° ÷ 45° C**
 Strokes in mm.: **40**
 With manual lever
 Electronic sensor with M12 swivel connector, from 0° to 90°
 Supply voltage: **10 ÷ 30 Vdc**
 IP code: **IP 65**

*: TOLERANCE BETWEEN DOWELS ± 0,02, BETWEEN SCREW HOLES ± 0,1
 **: DIMENSIONS TO BE RESPECTED IN CASE OTHER MANUAL LEVERS ARE USED