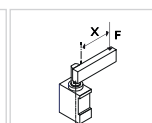
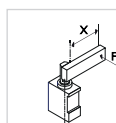
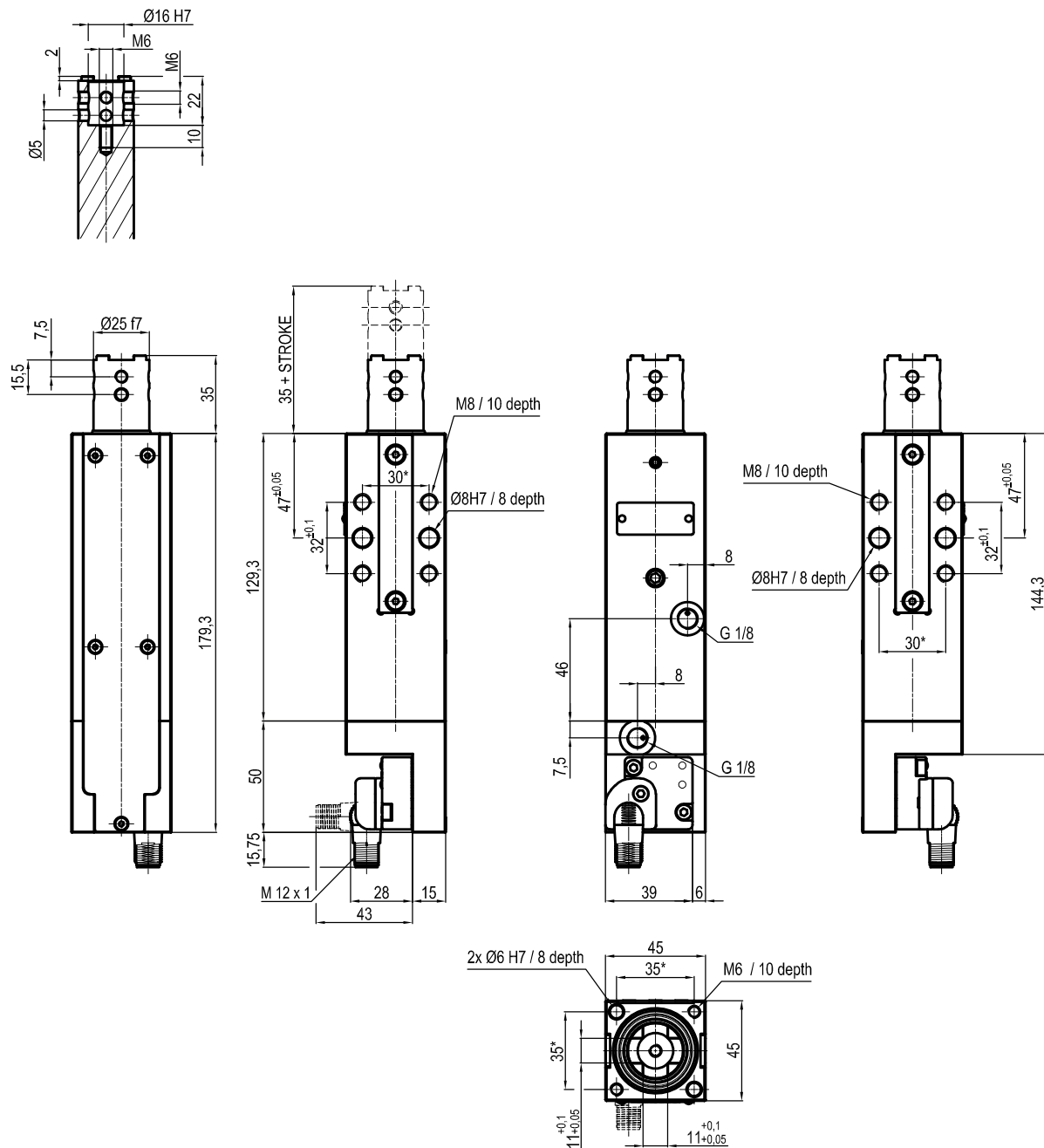

**ULB32\_\_BK0**
**4 STROKE**
**4**

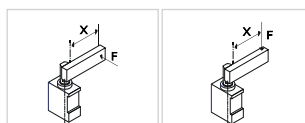
 020 = 20 mm  
 040 = 40 mm


Bore Ø	Max. pull force 0,5 MPa	Max. push force 0,5 MPa	Max. torque 6 Nm X=100 mm	Max. deflection moment 5,5 Nm X=100 mm	Weight
32 mm	300 N	390 N	± 0,06 mm	± 0,03 mm	1,0 Kg

 Min./Max. operating pressure: **0,4 / 0,6 MPa**  
 Operating temperature: **5° ± 45° C**  
 Strokes in mm.: **20 - 40**  
 Electronic sensor with M12 swivel connector, from 0° to 90°  
 Supply voltage: **10 ÷ 30 Vdc**  
 IP code: **IP 65**

\*: TOLERANCE BETWEEN DOWELS ± 0,02, BETWEEN SCREW HOLES ± 0,1


**ULB32\_\_CK0**
**4 STROKE**
**4**

 020 = 20 mm  
 040 = 40 mm


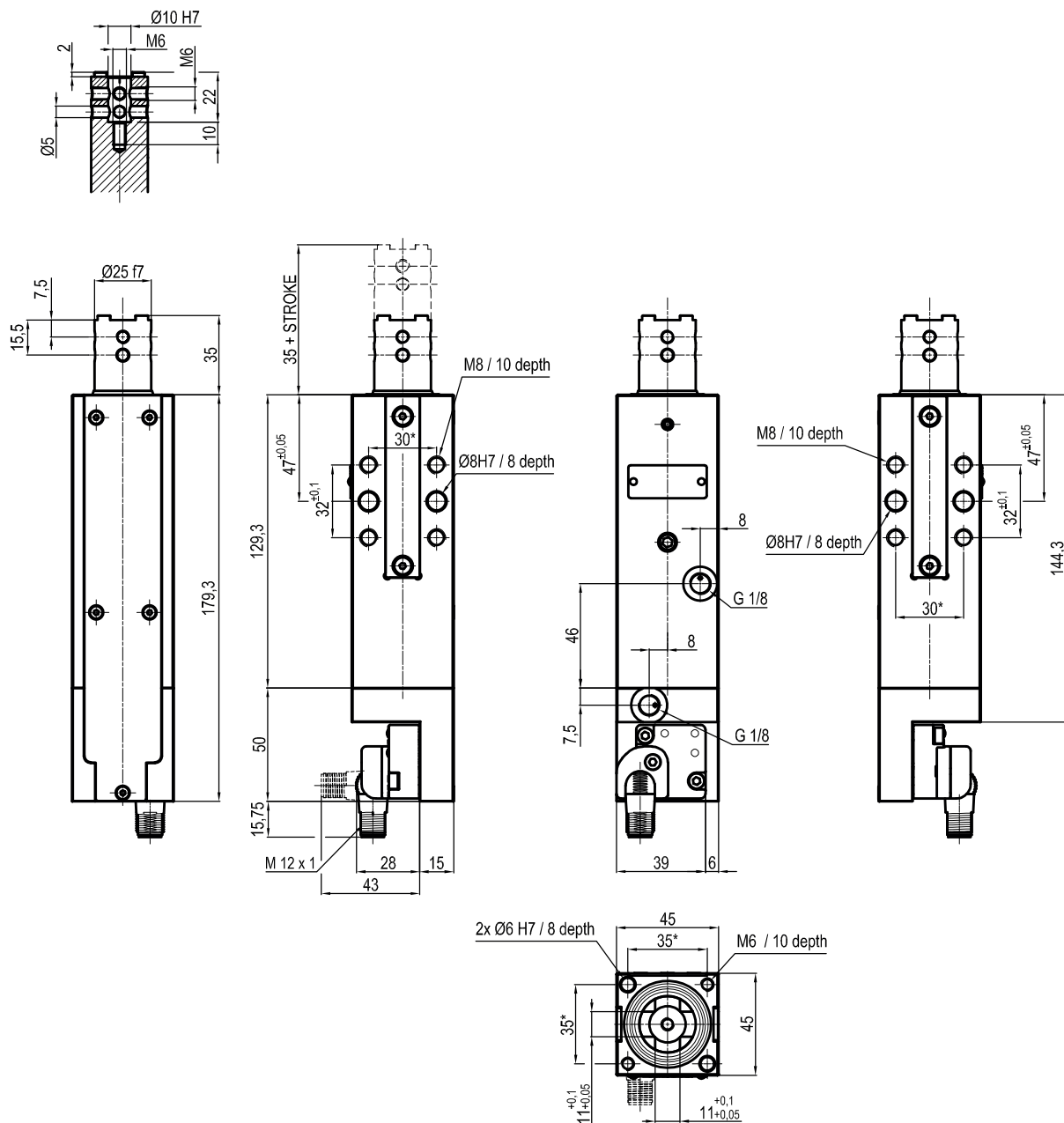
Bore Ø	Max. pull force 0,5 MPa	Max. push force 0,5 MPa	Max. torque 6 Nm X=100 mm	Max. deflection moment 5,5 Nm X=100 mm	Weight
32 mm	300 N	390 N	± 0,06 mm	± 0,03 mm	1,0 Kg

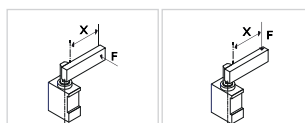
 Min./Max. operating pressure: **0,4 / 0,6 MPa**  
 Operating temperature: **5° ± 45° C**  
 Strokes in mm.: **20 - 40**  
 Electronic sensor with M12 swivel connector, from 0° to 90°  
 Supply voltage: **10 ÷ 30 Vdc**  
 IP code: **IP 65**

\*: TOLERANCE BETWEEN DOWELS ± 0,02, BETWEEN SCREW HOLES ± 0,1

Subject to technical modifications without notice

Rev. 00 01.08.18


**ULB32\_ \_ \_EKO**
**4 STROKE**
**4**

 020 = 20 mm  
 040 = 40 mm


Bore Ø	Max. pull force 0,5 MPa	Max. push force 0,5 MPa	Max. torque 6 Nm X=100 mm	Max. deflection moment 5,5 Nm X=100 mm	Weight
32 mm	300 N	390 N	± 0,06 mm	± 0,03 mm	1,0 Kg

 Min./Max. operating pressure: **0,4 / 0,6 MPa**

 Operating temperature: **5° ± 45° C**

 Strokes in mm.: **20 - 40**

Electronic sensor with M12 swivel connector, from 0° to 90°

 Supply voltage: **10 ÷ 30 Vdc**

 IP code: **IP 65**

\*: TOLERANCE BETWEEN DOWELS ± 0,02, BETWEEN SCREW HOLES ± 0,1