
ULA63__AKO
4 STROKE
4

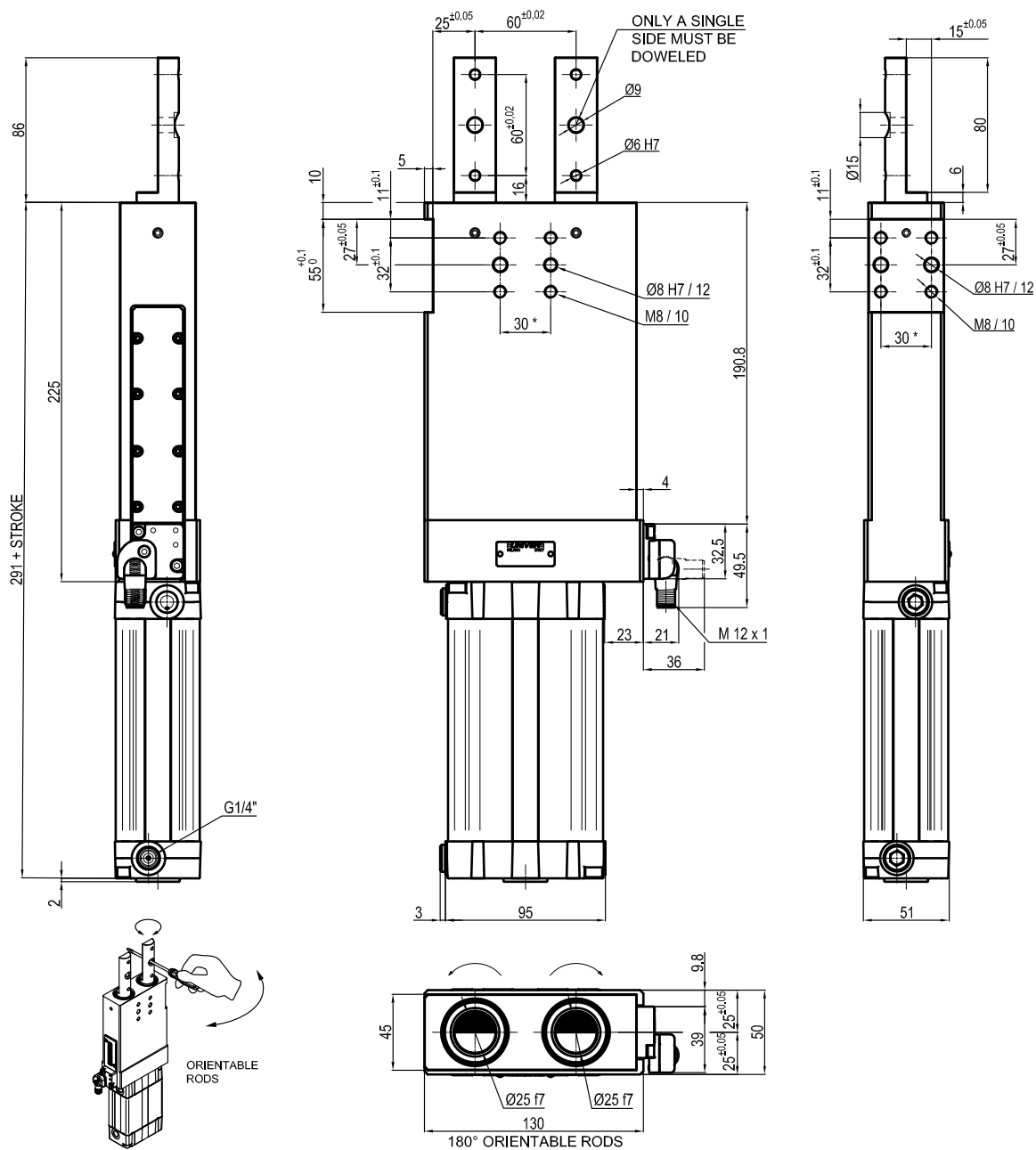
 015 = 15 mm 050 = 50 mm
 025 = 25 mm 060 = 60 mm
 040 = 40 mm

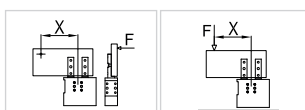
Bore Ø	Max. pull force 0,5 MPa	Max. push force 0,5 MPa	Max. torque 20 Nm	Max. deflection moment 20 Nm	Weight
63 mm	1430 N	1530 N	± 0,1	± 0,07	4,6 Kg
X = 100 mm					

Min./Max. operating pressure: **0,4 / 0,6 MPa**
 Operating temperature: **5° ÷ 45° C**
 Strokes in mm: **15 - 25 - 40 - 50 - 60**
 Electronic sensor with M12 swivel connector, from 0° to 90°
 Supply voltage: **10 ÷ 30 Vdc**
 IP code: **IP 65**
 Pneumatic ports on both sides

*: TOLERANCE BETWEEN DOWELS ± 0,02, BETWEEN SCREW HOLES ± 0,1

Subject to technical modifications without notice


ULA63__AKO
4 STROKE
4

 075 = 75 mm
 100 = 100 mm
 110 = 110 mm


Bore Ø	Max. pull force 0,5 MPa	Max. push force 0,5 MPa	Max. torque 20 Nm	Max. deflection moment 20 Nm	Weight
63 mm	1430 N	1530 N	± 0,1	± 0,07	5,7 Kg

X = 100 mm

 Min./Max. operating pressure: **0,4 / 0,6 MPa**
 Operating temperature: **5° ÷ 45° C**
 Strokes in mm: **75 - 100 - 110**
 Electronic sensor with M12 swivel connector, from 0° to 90°
 Supply voltage: **10 ÷ 30 Vdc**
 IP code: **IP 65**
 Pneumatic ports on both sides

*: TOLERANCE BETWEEN DOWELS ± 0,02, BETWEEN SCREW HOLES ± 0,1

Subject to technical modifications without notice