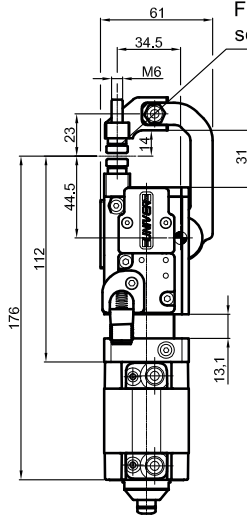
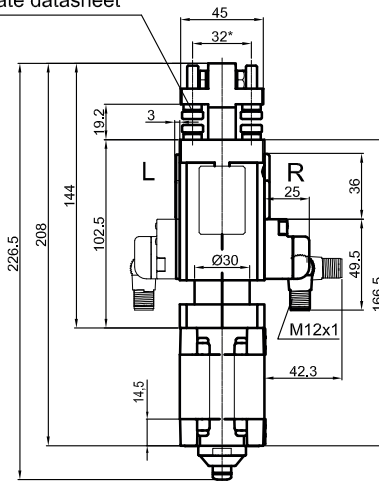
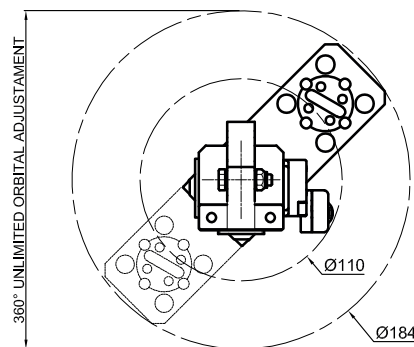
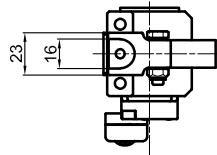
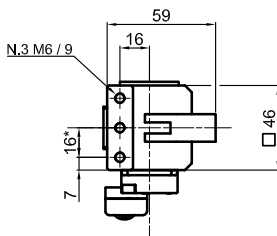
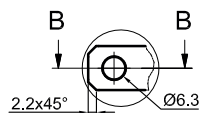
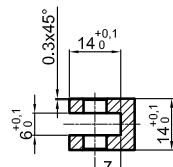
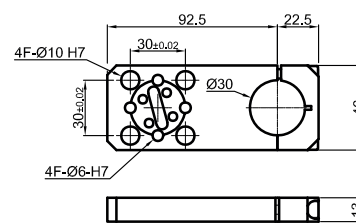
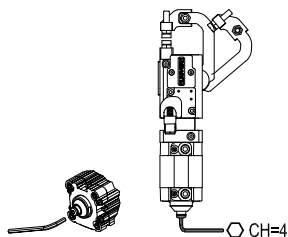

**UGPS32S00K\_0**

**UGPS32S1\_K\_0**

For tip versions A-B-C-D-E see separate datasheet


**UGPS32S2\_K\_0**

**UGPS32S2\_K\_1**

**A (2 : 1)**

**B-B (2 : 1)**

**LGP32MP**

\*: TOLERANCE BETWEEN DOWELS ± 0,02, BETWEEN SCREW HOLES ± 0,1

**UGPS32S\_\_K\_10**
**4 ARM**
**5 TIPS**
**7 SENSOR MOUNTING**
**4 5 7**

- 0 = Without jaws
- 1 = Jaws set for 1 pair of tips
- 2 = Jaws set for 2 pair of tips

- 0 = No tips
- A = Knurled tips
- B = Self-adjusting knurled tips
- C = Flat tips
- D = Concave/Convex tips (1+1)
- E = Self adjusting flat tips

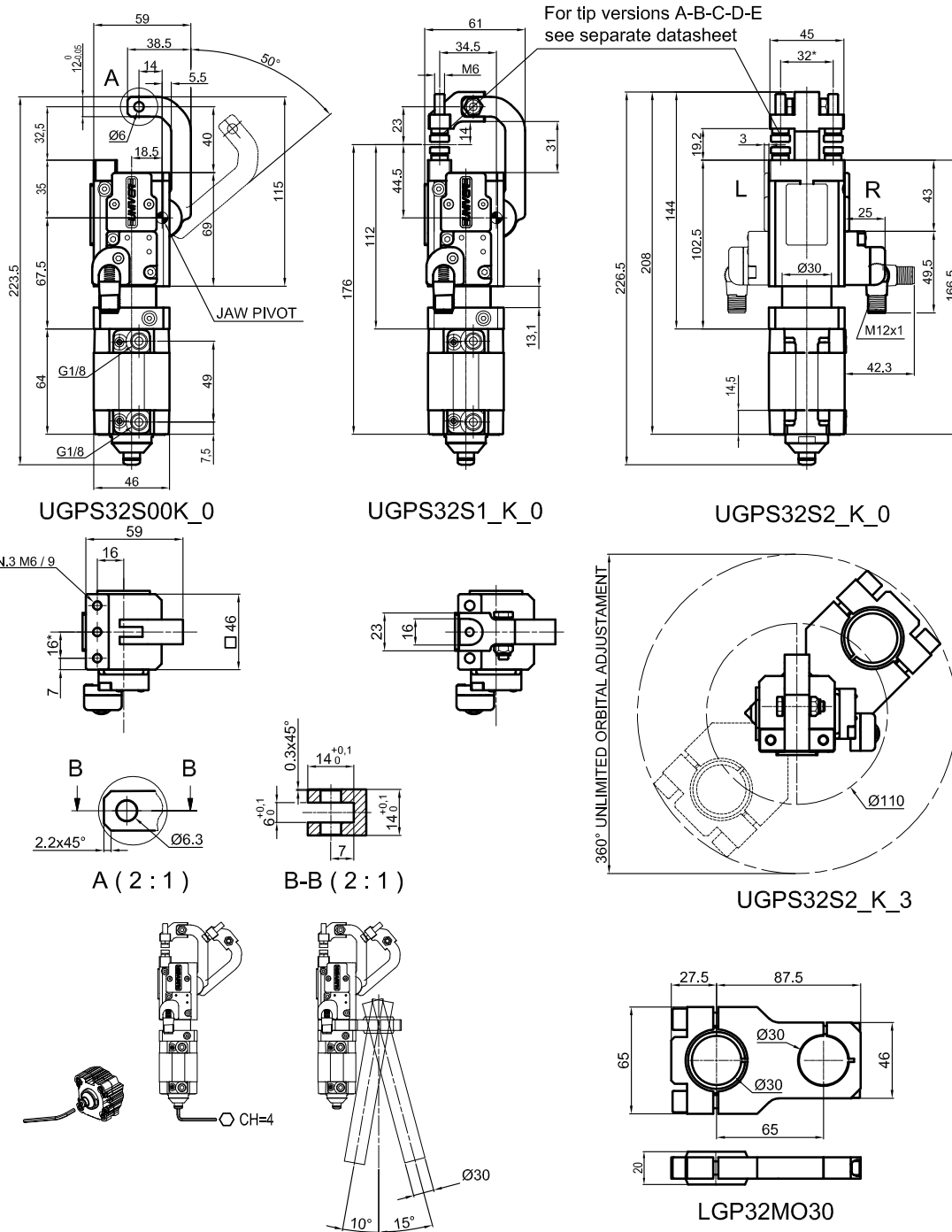
- N = No sensor
- R = Right (ports side)
- L = Left

Bore Ø	Holding moment	Clamping force at 5 bar	Weight	Mount weight
32 mm	150 Nm	600 N	0,95 Kg	0,16 Kg

Min./Max. operating pressure: **0,4 / 0,6 MPa**  
 Operating temperature: **5° ÷ 45° C**  
 Opening angle: **adjustable from 10° to 50°**  
 Electronic sensor with M12 swivel connector, from 0° to 90°, in steps of 10°  
 Supply voltage: **10 ÷ 30 Vdc**  
 IP code: **IP 65**

Subject to technical modifications without notice





\*: TOLERANCE BETWEEN DOWELS ± 0,02, BETWEEN SCREW HOLES ± 0,1

## UGPS32S\_\_K\_30

**4** ARM

**5** TIPS

**7** SENSOR MOUNTING

**4 5 7**

- 0 = Without jaws
- 1 = Jaws set for 1 pair of tips
- 2 = Jaws set for 2 pair of tips

- 0 = No tips
- A = Knurled tips
- B = Self-adjusting knurled tips
- C = Flat tips
- D = Concave/Convex tips (1+1)
- E = Self adjusting flat tips

- N = No sensor
- R = Right (ports side)
- L = Left

Bore Ø	Holding moment	Clamping force at 5 bar	Weight	Mount weight
32 mm	150 Nm	600 N	0,95 Kg	0,2 Kg

Min./Max. operating pressure: **0,4 / 0,6 MPa**  
 Operating temperature: **5° ÷ 45° C**  
 Opening angle: **adjustable from 10° to 50°**  
 Electronic sensor with M12 swivel connector, from 0° to 90°, in steps of 10°  
 Supply voltage: **10 ÷ 30 Vdc**  
 IP code: **IP 65**

Subject to technical modifications without notice

