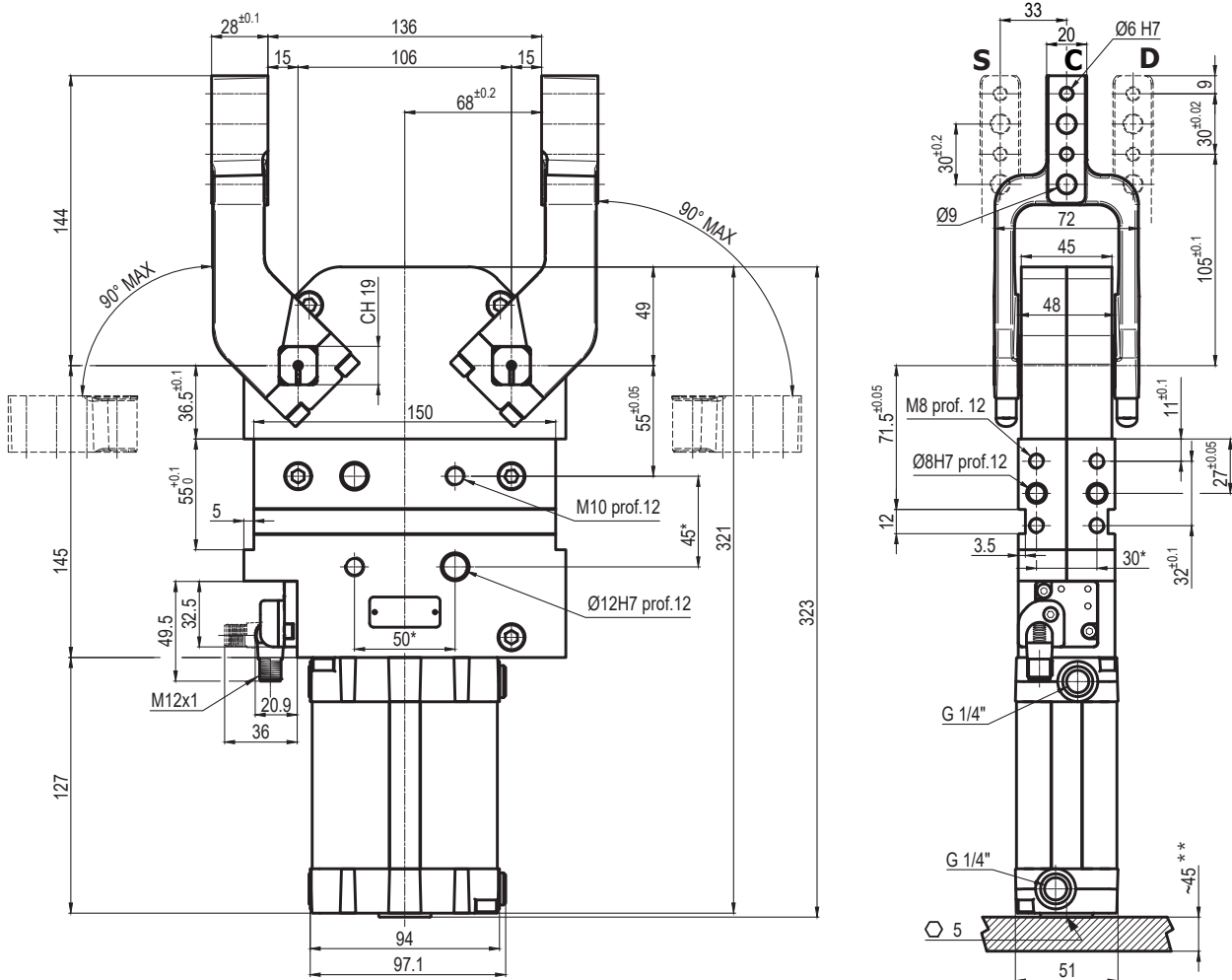


\* : TOLERANCE BETWEEN DOWELS  $\pm 0,02$ , BETWEEN SCREW HOLES  $\pm 0,1$   
 \*\* : AREA TO ACCESS ANGLE ADJUSTMENT

Bore $\varnothing$	Clamping moment (0,5 MPa)	Weight (clamping arm not included)
63 mm	130 Nm	4,6 Kg

Min./Max. operating pressure: **0,4 / 0,6 MPa**  
 Operating temperature: **5° ÷ 45° C**  
 Opening angle: **adjustable**  
 Electronic sensor with M12 swivel connector, from 0° to 90°  
 Supply voltage: **10 ÷ 30 Vdc**  
 IP code: **IP 65**  
 Pneumatic ports on both sides



\* : TOLERANCE BETWEEN DOWELS  $\pm 0,02$ , BETWEEN SCREW HOLES  $\pm 0,1$

\*\* : AREA TO ACCESS ANGLE ADJUSTMENT

**UCDP63D \_ \_ K0**
**6 7**
**6** ARM STYLE

**7** ARM TYPE

C = Central  
D = Right  
S = Left

A = Aluminium  
S = Steel

Bore $\varnothing$	Clamping moment (0,5 MPa)	Weight (clamping arm not included)
63 mm	130 Nm	4,6 Kg

Min./Max. operating pressure: **0,4 / 0,6 MPa**

Operating temperature: **5° ÷ 45° C**

Opening angle: **adjustable from 0° to 90°**

Electronic sensor with M12 swivel connector, from 0° to 90°

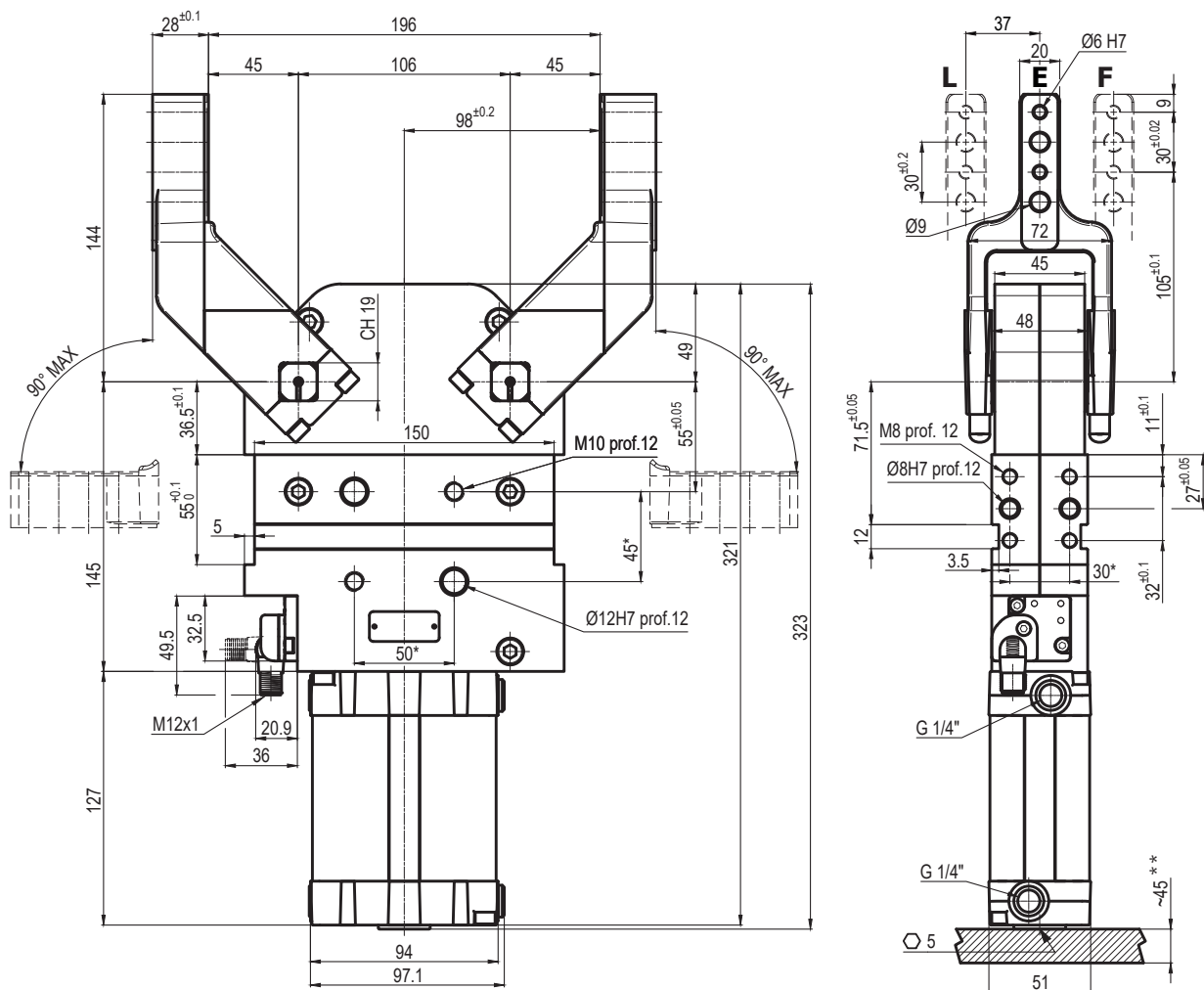
Supply voltage: **10 ÷ 30 Vdc**

IP code: **IP 65**

Pneumatic ports on both sides

Subject to technical modifications without notice

Rev. 01 27.06.19



\* : TOLERANCE BETWEEN DOWELS  $\pm 0,02$ , BETWEEN SCREW HOLES  $\pm 0,1$

\*\* : AREA TO ACCESS ANGLE ADJUSTMENT

**UCDP63D \_ \_ K0**
**6** ARM STYLE

**7** ARM TYPE

**6 7**

E = Central  
F = Right  
L = Left

A = Aluminium  
S = Steel

Bore $\varnothing$	Clamping moment (0,5 MPa)	Weight (clamping arm not included)
63 mm	130 Nm	4,6 Kg

Min./Max. operating pressure: **0,4 / 0,6 MPa**

Operating temperature: **5° ÷ 45° C**

Opening angle: **adjustable from 0° to 90°**

Electronic sensor with M12 swivel connector, from 0° to 90°

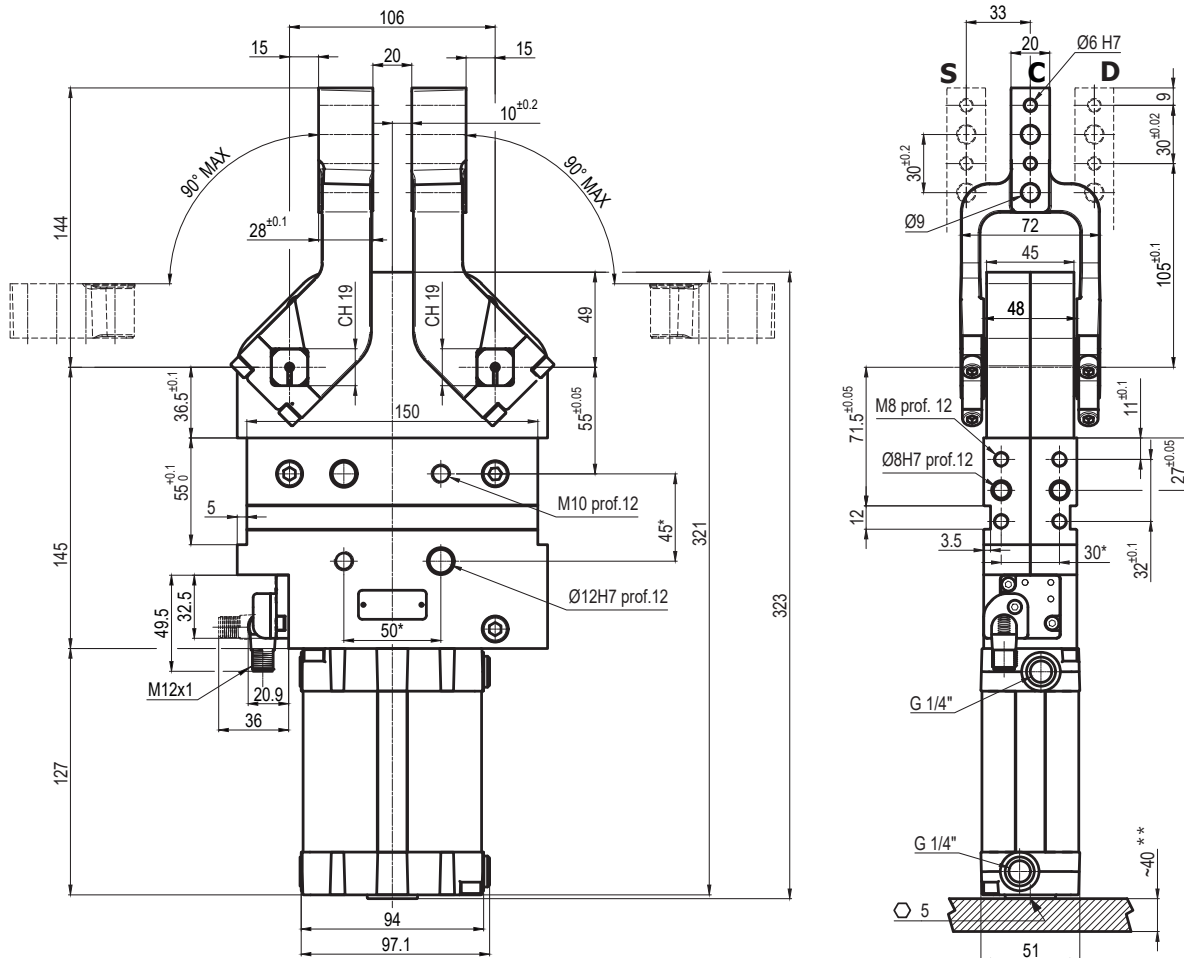
Supply voltage: **10 ÷ 30 Vdc**

IP code: **IP 65**

Pneumatic ports on both sides

Subject to technical modifications without notice

Rev. 01 27.06.19



\* : TOLERANCE BETWEEN DOWELS  $\pm 0,02$ , BETWEEN SCREW HOLES  $\pm 0,1$

\*\* : AREA TO ACCESS ANGLE ADJUSTMENT

## UCDP63I \_ \_ K0

**6 7**

**6** ARM STYLE

C = Central  
D = Right  
S = Left

**7** ARM TYPE

A = Aluminium  
S = Steel

Bore $\varnothing$	Clamping moment (0,5 MPa)	Weight (clamping arm not included)
63 mm	130 Nm	4,6 Kg

Min./Max. operating pressure: **0,4 / 0,6 MPa**

Operating temperature: **5° ÷ 45° C**

Opening angle: **adjustable from 0° to 90°**

Electronic sensor with M12 swivel connector, from 0° to 90°

Supply voltage: **10 ÷ 30 Vdc**

IP code: **IP 65**

Pneumatic ports on both sides

Subject to technical modifications without notice