

* : TOLERANCE BETWEEN DOWELS $\pm 0,02$, BETWEEN SCREW HOLES $\pm 0,1$

** : AREA TO ACCESS ANGLE ADJUSTMENT

***: DIMENSIONS TO BE RESPECTED IN CASE OTHER MANUAL LEVERS ARE USED

Bore Ø	Holding moment	Clamping moment	Weight (clamping arm not included)
50	1750 Nm	420 Nm	2,8 Kg

Operating temperature: $5^{\circ} \div 45^{\circ} \text{C}$

Opening angle: **adjustable**

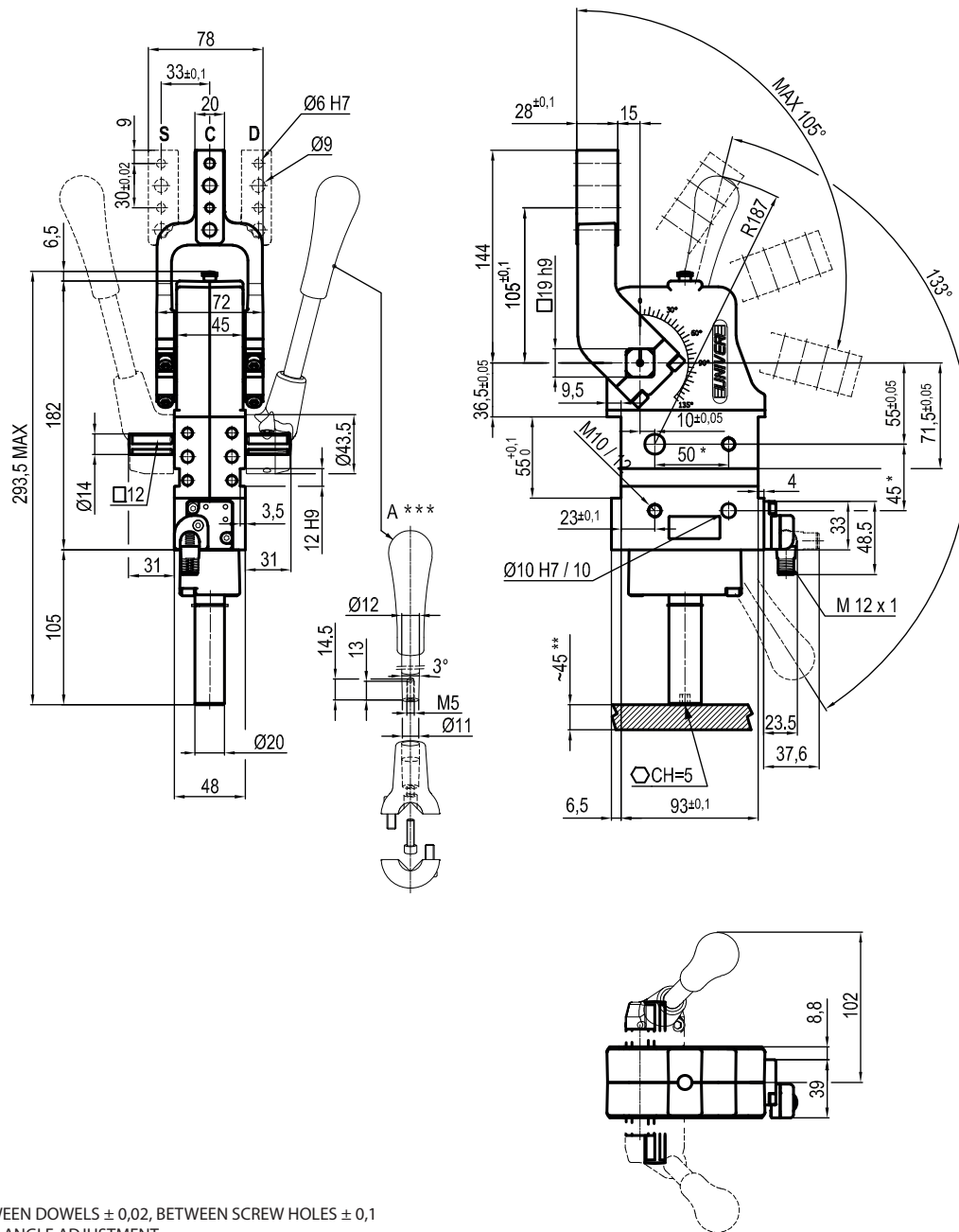
Without arm

With manual lever

Electronic sensor with M12 swivel connector, from 0° to 90°

Supply voltage: **10 \div 30 Vdc**

IP code: **IP 65**



* : TOLERANCE BETWEEN DOWELS $\pm 0,02$, BETWEEN SCREW HOLES $\pm 0,1$

** : AREA TO ACCESS ANGLE ADJUSTMENT

***: DIMENSIONS TO BE RESPECTED IN CASE OTHER MANUAL LEVERS ARE USED

UCBL450O __ K0
7 ARM STYLE

8 ARM TYPE

7 8

C = Central
D = Right
S = Left

A = Aluminium
S = Steel

Size	Holding moment	Clamping moment	Weight (clamping arm not included)
50	1750 Nm	420 Nm	2,8 Kg

Operating temperature: **5°÷ 45° C**

Opening angle: **adjustable from 0° to 105°**

Arm position: **180°**

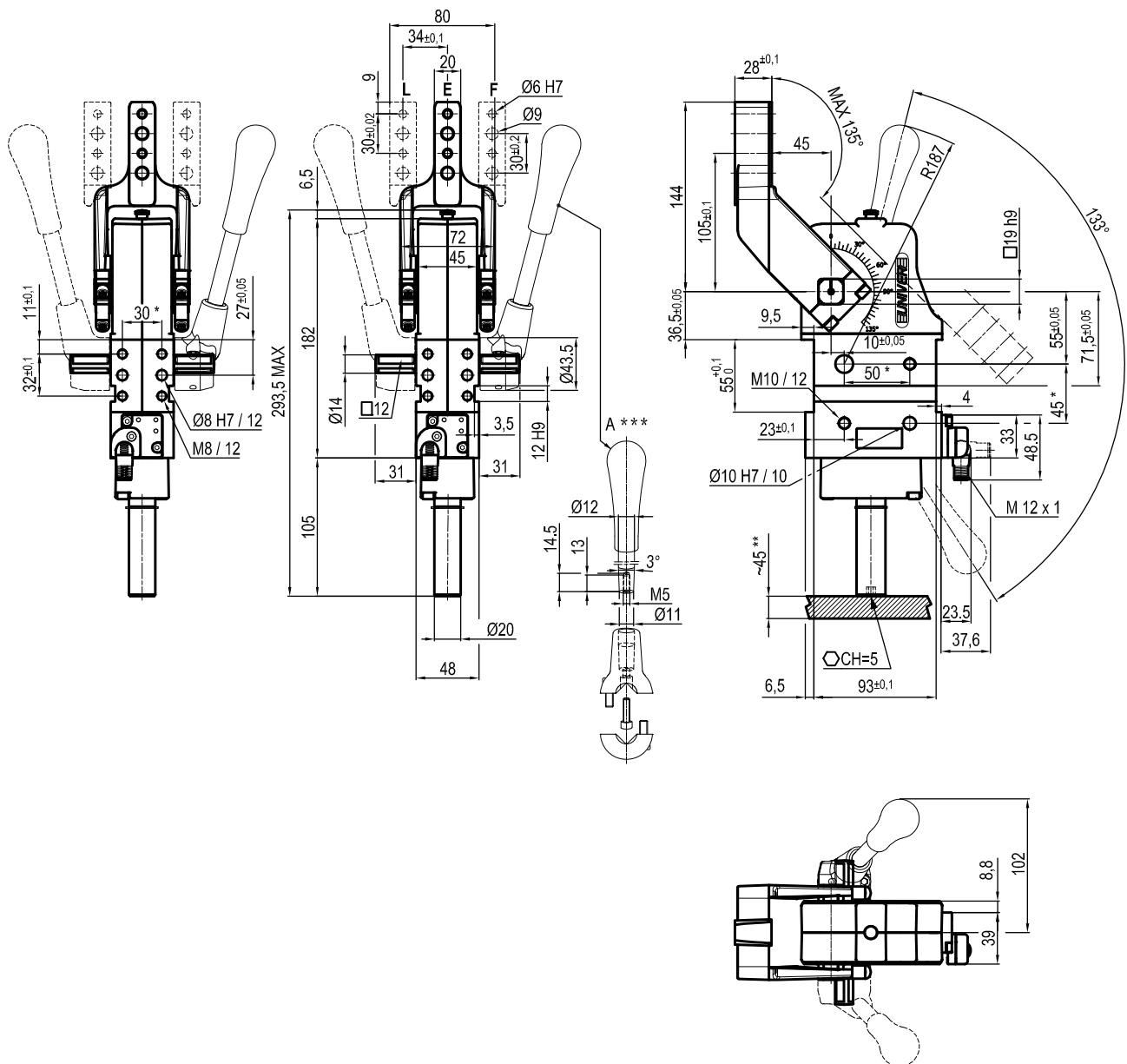
With manual lever

Electronic sensor with M12 swivel connector, from 0° to 90°

Supply voltage: **10 ÷ 30 Vdc**

IP code: **IP 65**

Subject to technical modifications without notice



* : TOLERANCE BETWEEN DOWELS $\pm 0,02$, BETWEEN SCREW HOLES $\pm 0,1$

** : AREA TO ACCESS ANGLE ADJUSTMENT

***: DIMENSIONS TO BE RESPECTED IN CASE OTHER MANUAL LEVERS ARE USED

UCBL450O __ K0
7 ARM STYLE

8 ARM TYPE

7 8

E = Central
F = Right
L = Left

A = Aluminium
S = Steel

Size	Holding moment	Clamping moment	Weight (clamping arm not included)
50	1750 Nm	420 Nm	2,8 Kg

Operating temperature: 5° ÷ 45° C
Opening angle: **adjustable from 0° to 135°**

Arm position: **180°**

With manual lever

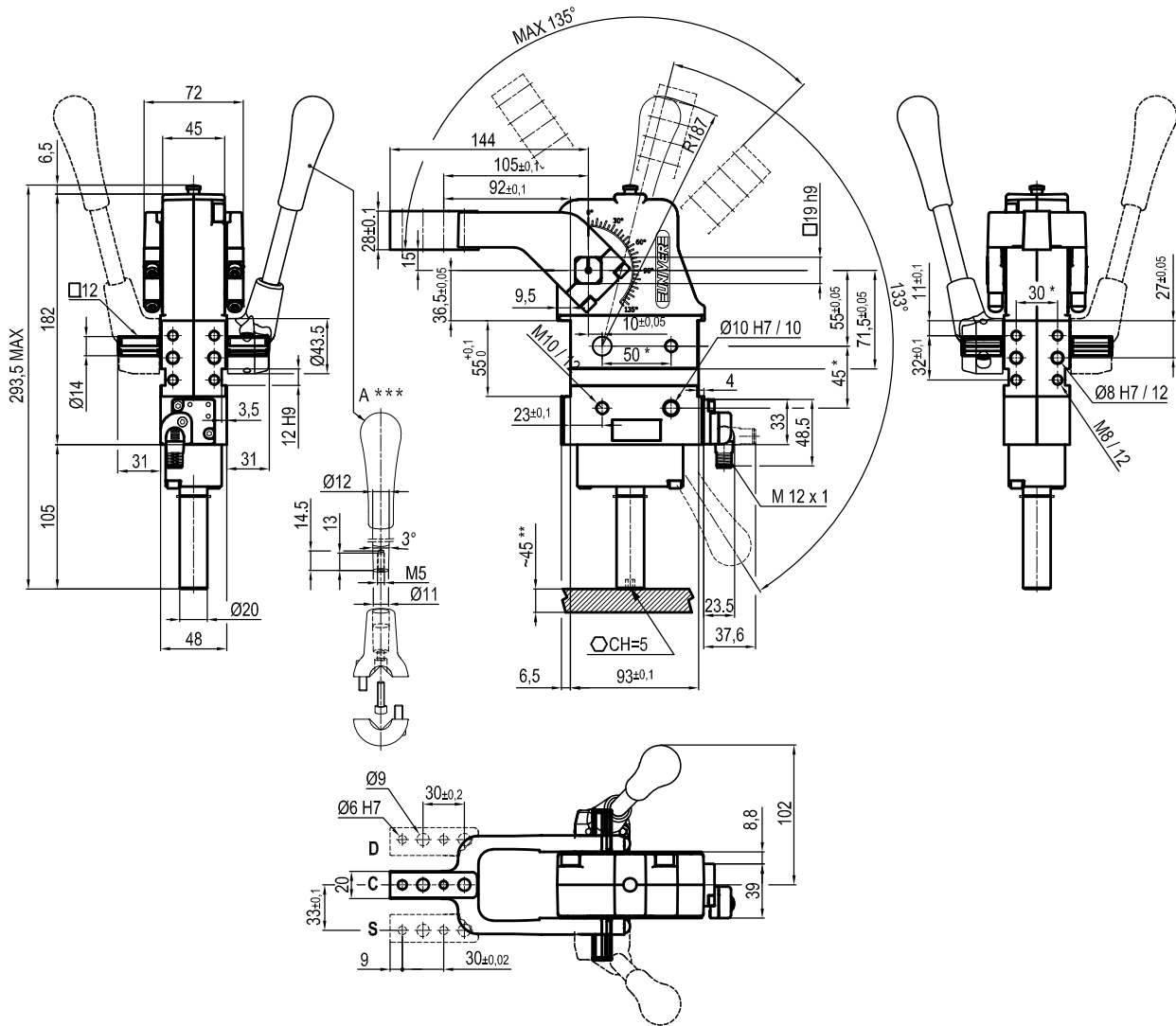
Electronic sensor with M12 swivel connector, from 0° to 90°

Supply voltage: **$10 \div 30$ Vdc**

IP code: **IP 65**

Subject to technical modifications without notice

Rev.01 26.01.22



*: TOLERANCE BETWEEN DOWELS ± 0,02, BETWEEN SCREW HOLES ± 0,1

** : AREA TO ACCESS ANGLE ADJUSTMENT

***: DIMENSIONS TO BE RESPECTED IN CASE OTHER MANUAL LEVERS ARE USED

UCBL450V __ _ K0
7 ARM STYLE

8 ARM TYPE

7 8

C = Central
D = Right
S = Left

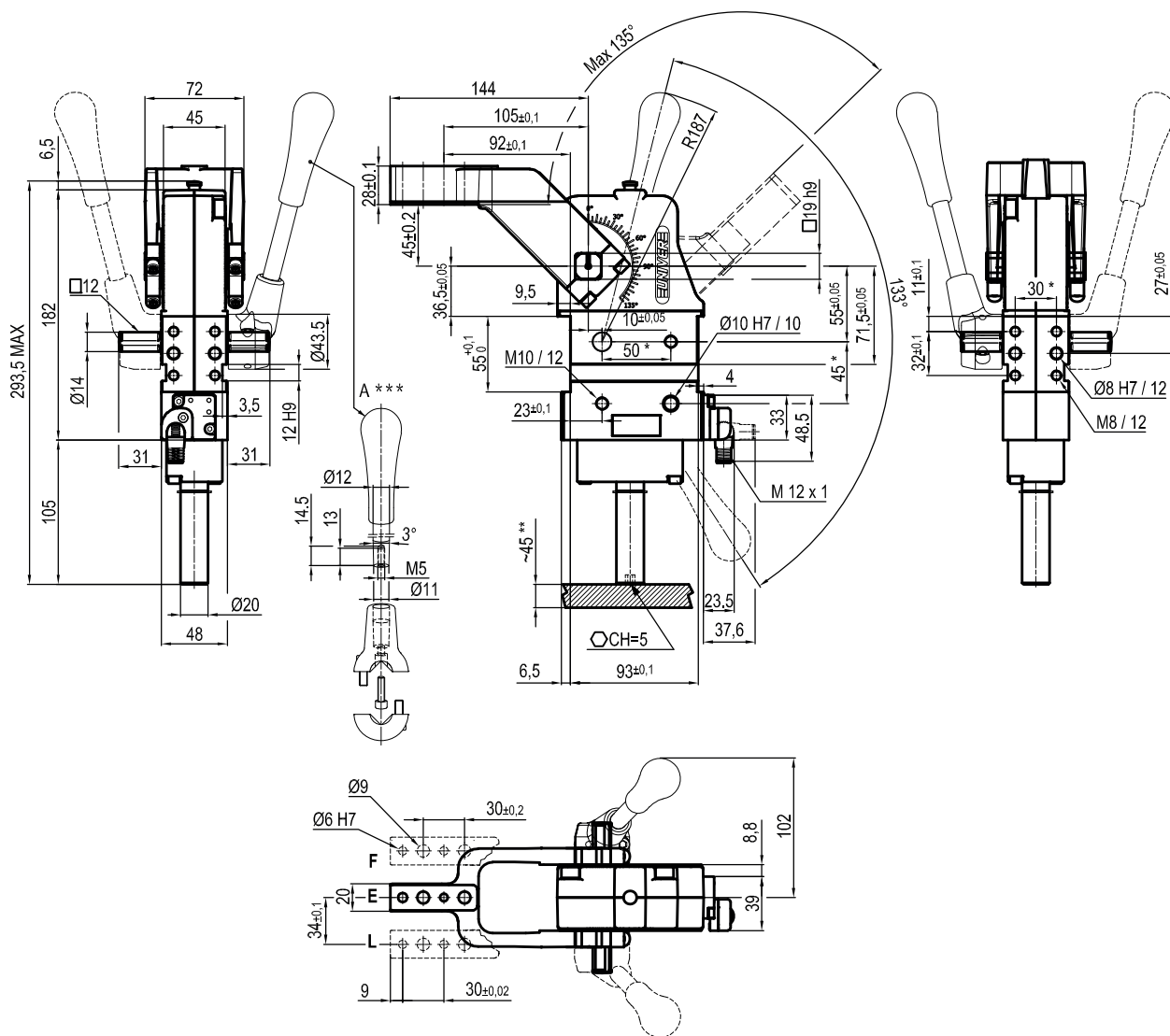
A = Aluminium
S = Steel

Bore Ø	Holding moment	Clamping moment	Weight (clamping arm not included)
50	1750 Nm	420 Nm	2,8 Kg

Operating temperature: 5°÷ 45° C
Opening angle: **adjustable from 0° to 135°**
Arm position: **90°**
With manual lever
Electronic sensor with M12 swivel connector, from 0° to 90°
Supply voltage: **10 ÷ 30 Vdc**
IP code: **IP 65**

Subject to technical modifications without notice

Rev. 00 05.11.19



*: TOLERANCE BETWEEN DOWELS $\pm 0,02$, BETWEEN SCREW HOLES $\pm 0,1$
 **: AREA TO ACCESS ANGLE ADJUSTMENT
 ***: DIMENSIONS TO BE RESPECTED IN CASE OTHER MANUAL LEVERS ARE USED

UCBL450V __ _ K0
7 ARM STYLE

8 ARM TYPE

7 8

 E= Central
 F= Right
 L= Left

 A= Aluminium
 S= Steel

Bore \varnothing	Holding moment	Clamping moment	Weight (clamping arm not included)
50	1750 Nm	420 Nm	2,8 Kg

Operating temperature: $5^{\circ} \div 45^{\circ} \text{C}$
 Opening angle: **adjustable from 0° to 135°**
 Arm position: **90°**
 With manual lever
 Electronic sensor with M12 swivel connector, from 0° to 90°
 Supply voltage: **$10 \div 30 \text{Vdc}$**
 IP code: **IP 65**

Subject to technical modifications without notice