

# UBP80

UNIVERSAL Power clamps



U	B	P	8	0	O	E	K	
1	2	3	4	5	6	7		

1 Series	2 Version	3 Size
----------	-----------	--------

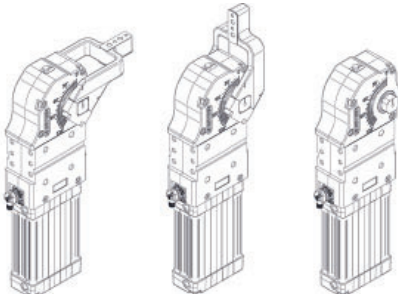
**UB = UNIVERSAL** power clamps  
fully adjustable opening angle:  
**0° to 135° Max**  
The opening angle range may vary  
according to the arm position and style

**P** = Pneumatic-standard

**80** = Ø 80 mm

4 Arm position	5 Arm style	6 Sensor
----------------	-------------	----------

**V** = 90°    **O** = 180°    **N** = No arm



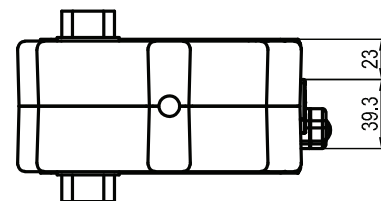
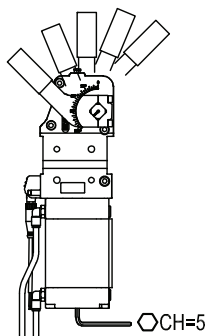
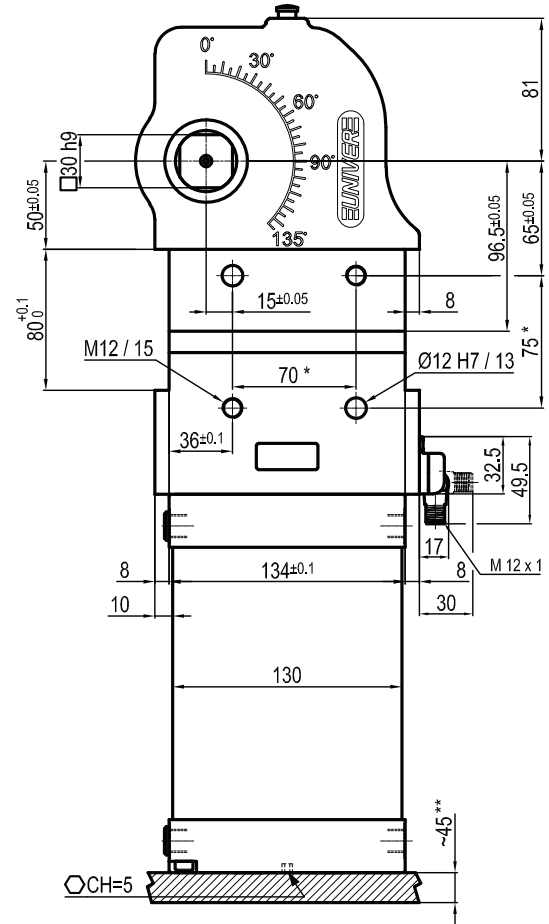
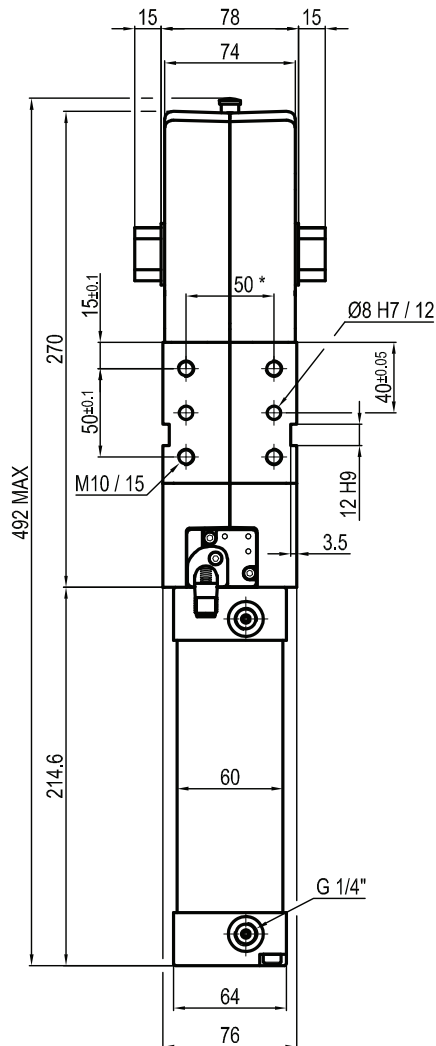
**C** = Central, 20 mm offset  
**D** = Right, 20 mm offset  
**S** = Left, 20 mm offset  
**E** = Central, 45 mm offset  
**F** = Right, 45 mm offset  
**L** = Left, 45 mm offset  
**X\*** = Central, oversized dowel holes Ø 8 H7, 20 mm offset  
**Y\*** = Right, oversized dowel holes Ø 8 H7, 20 mm offset  
**Z\*** = Left, oversized dowel holes Ø 8 H7, 20 mm offset  
**N** = No arm  
**\*** = Available upon request

**N** = No sensor  
(with protection plate)  
**K** = Electronic sensor PNP (optical)  
(DF-K)

**Double arm version available**  
**UBP80ODPE - UBP80VDPE**

7 Arm material
----------------

**S** = Steel  
If not specified the aluminium version  
is supplied

**UBP80NNK**


Bore Ø	Holding moment	Clamping moment (0,5 MPa)	Weight (clamping arm not included)
80 mm	4000 Nm	1100 Nm	9.3 Kg

 Min./Max. operating pressure: **0,4 / 0,6 MPa**

 Operating temperature: **5° ÷ 45° C**

 Opening angle: **adjustable**

Without arm

Electronic sensor with M12 swivel connector, from 0° to 90°

Supply voltage: 10 ÷ 30 Vdc

 IP code: **IP 65**

Pneumatic ports on both sides

\*: TOLERANCE BETWEEN DOWELS ± 0,02, BETWEEN SCREW HOLES ± 0,1

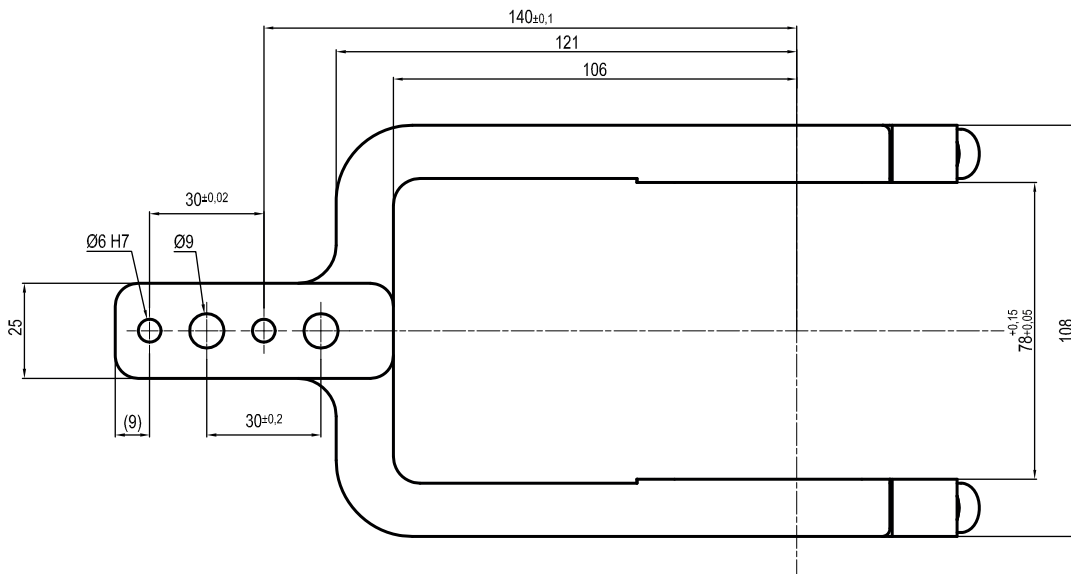
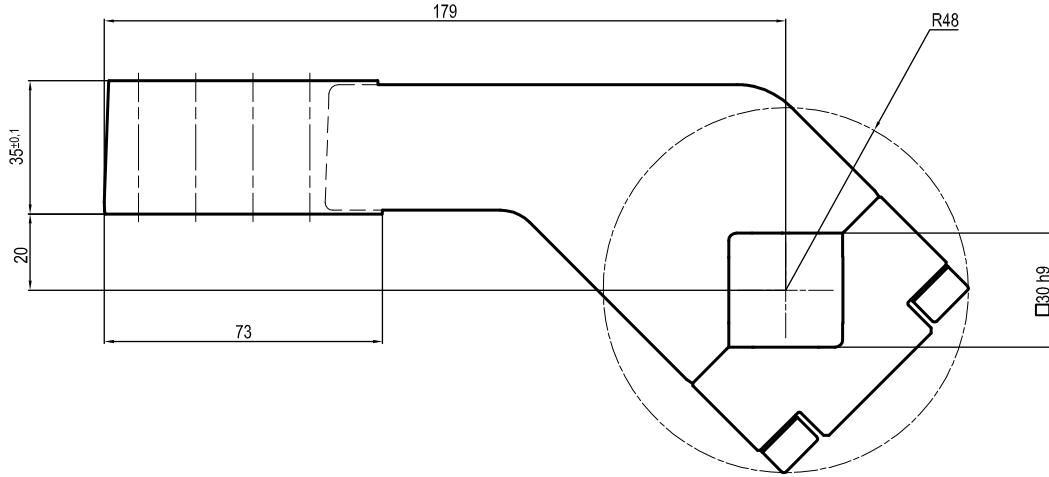
\*\*: AREA TO ACCESS ANGLE ADJUSTMENT

Subject to technical modifications without notice

Rev. 00 05.02.20

LKP80C

□ 30 mm - offset 20 mm



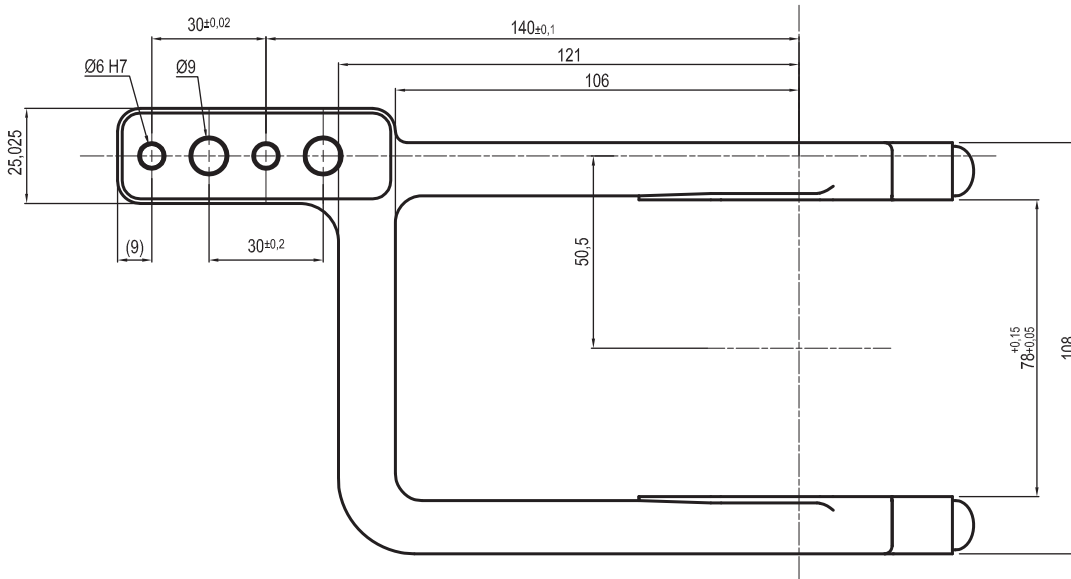
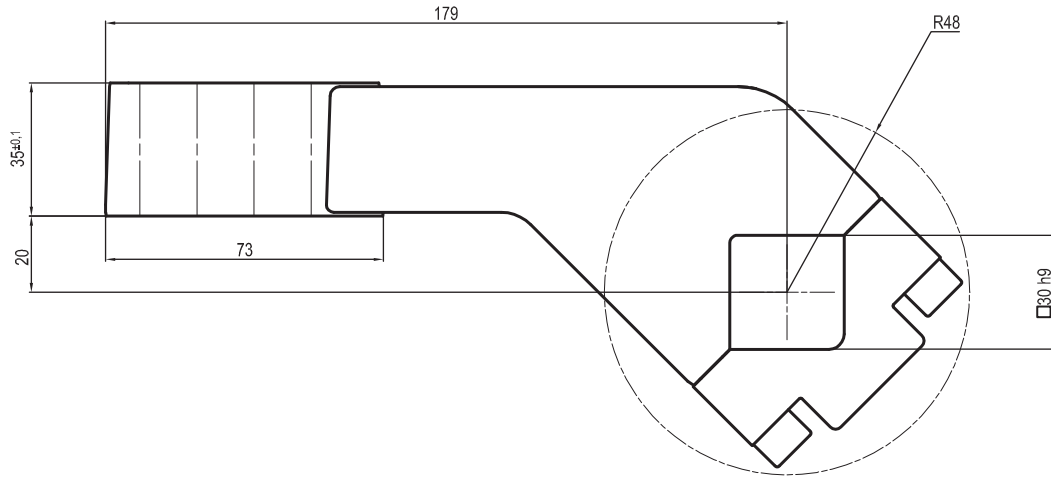
Clamp size	Material	Weight
80 mm	Aluminium	0,6 Kg

THE CLAMPING ARM INCLUDES THE NECESSARY SCREWS

Subject to technical modifications without notice

LKP80D

□ 30 mm - offset 20 mm



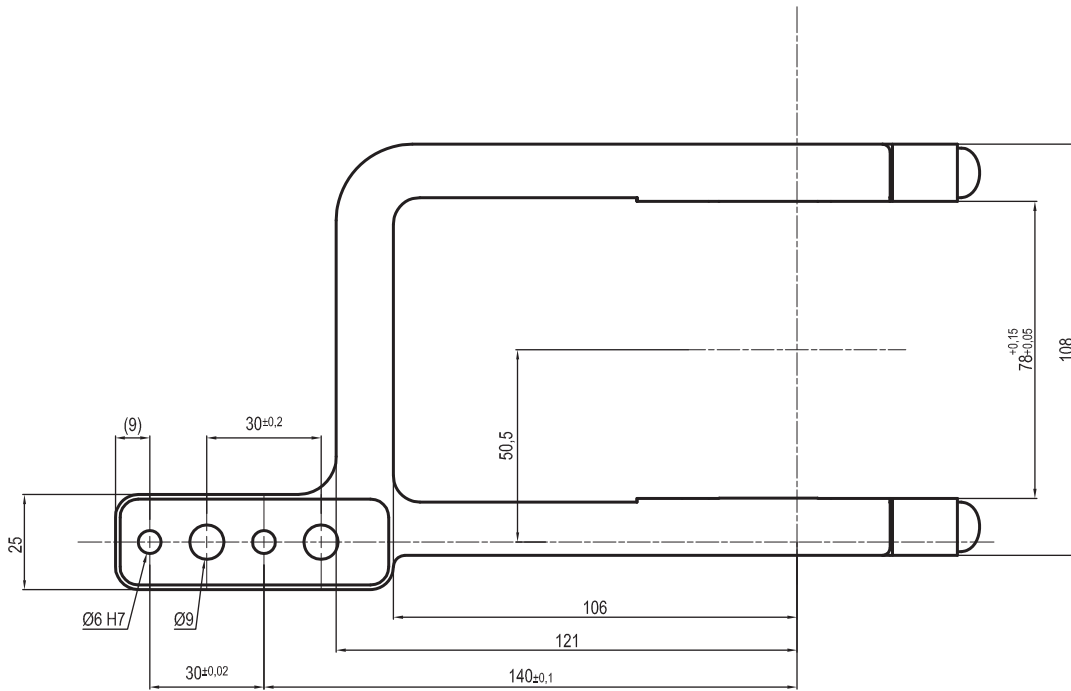
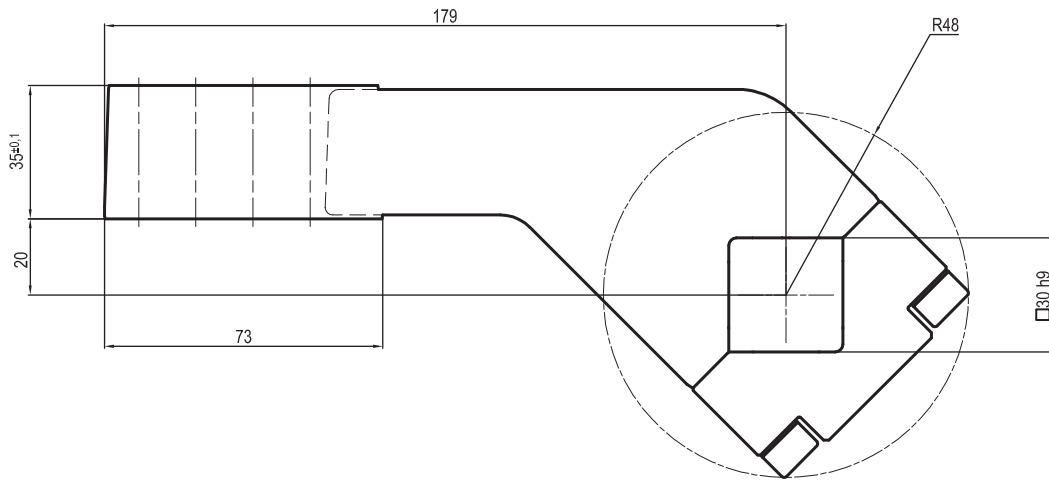
Clamp size	Material	Weight
80 mm	Aluminium	0,6 Kg

THE CLAMPING ARM INCLUDES THE NECESSARY SCREWS

Subject to technical modifications without notice

LKP80S

□ 30 mm - offset 20 mm



Clamp size	Material	Weight
80 mm	Aluminium	0,6 Kg

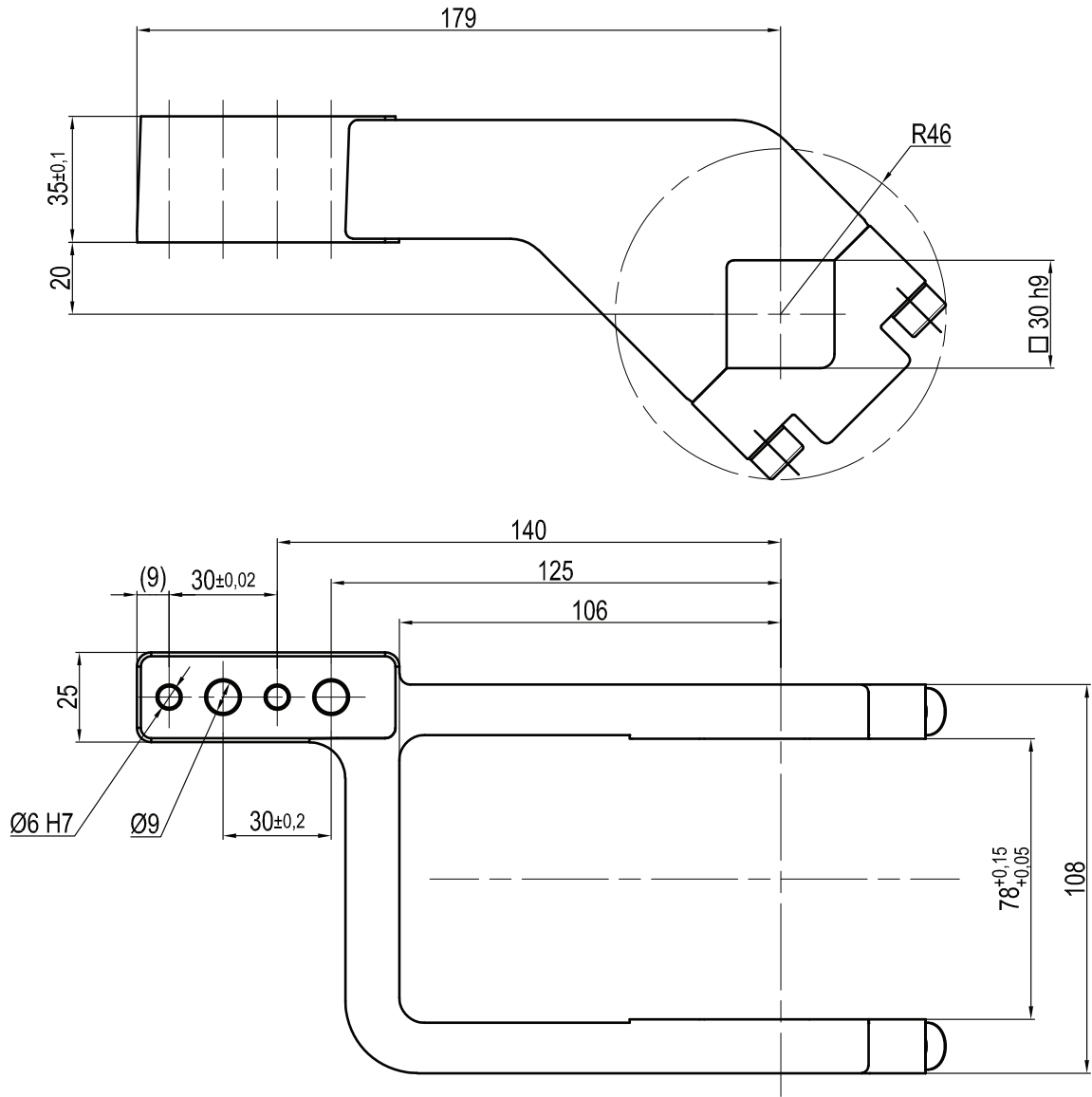
THE CLAMPING ARM INCLUDES THE NECESSARY SCREWS

Subject to technical modifications without notice

Rev. 02 15.07.16

UKP80DS

□ 30 mm - offset 20 mm



Clamp size	Material	Weight
80 mm	Steel	2,3 Kg

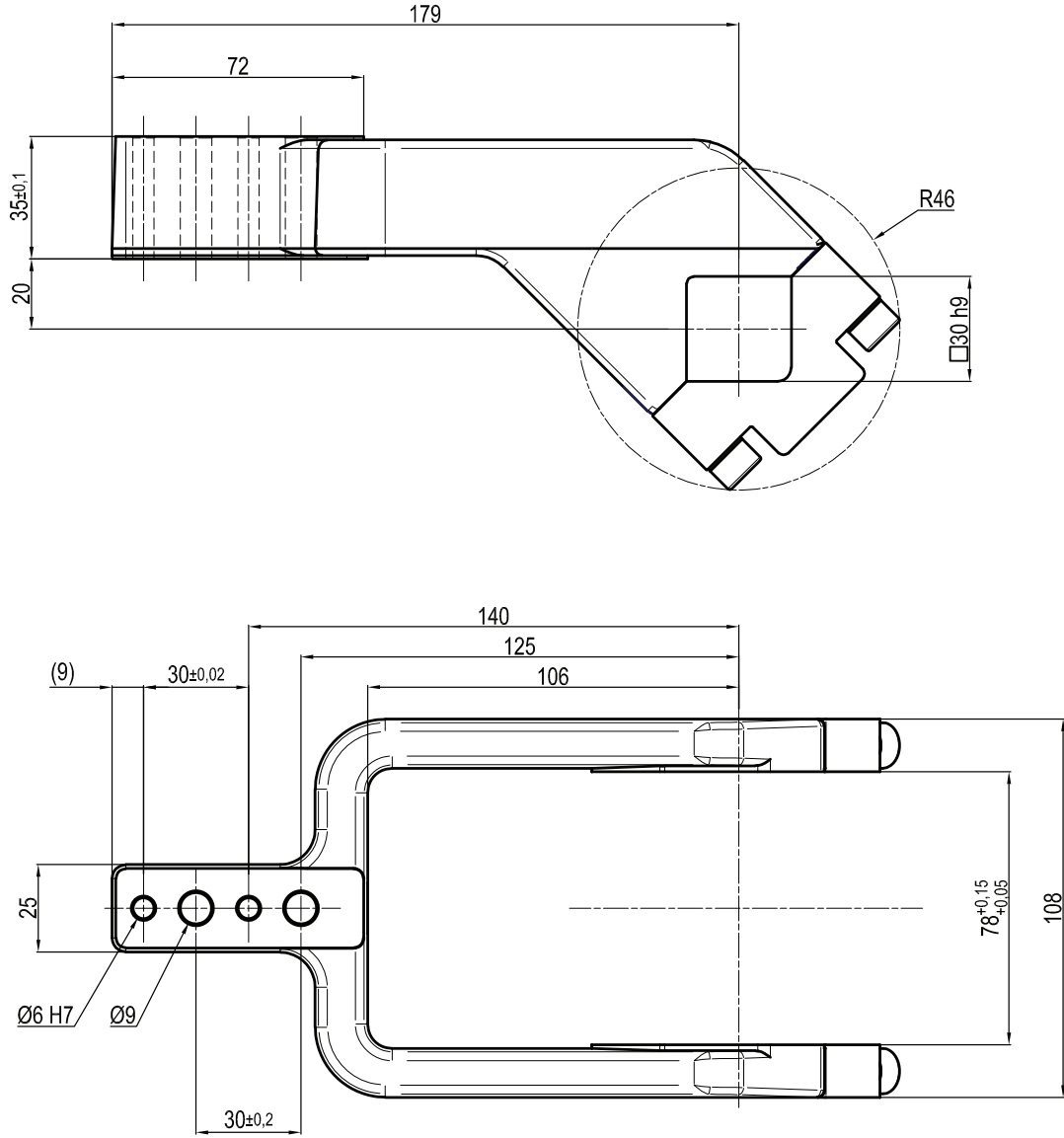
THE CLAMPING ARM INCLUDES THE NECESSARY SCREWS

Subject to technical modifications without notice

Rev. 00 21.07.20

UKP80CS

□ 30 mm - offset 20 mm



Clamp size	Material	Weight
80 mm	Steel	2,26 Kg

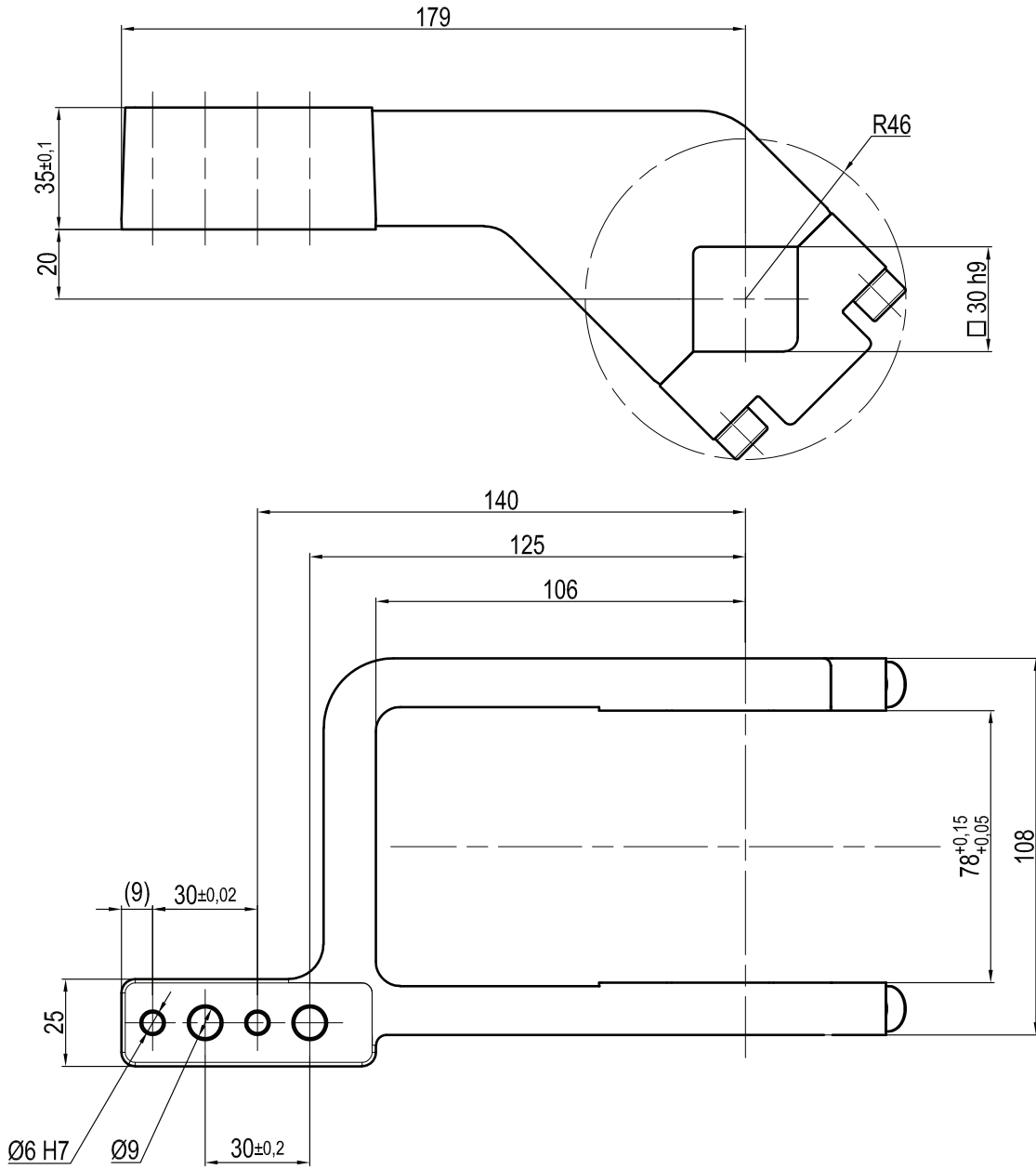
THE CLAMPING ARM INCLUDES THE NECESSARY SCREWS

Subject to technical modifications without notice

Rev. 00 21.07.20

UKP80SS

□ 30 mm - offset 20 mm



Clamp size	Material	Weight
80 mm	Steel	2,3 Kg

THE CLAMPING ARM INCLUDES THE NECESSARY SCREWS

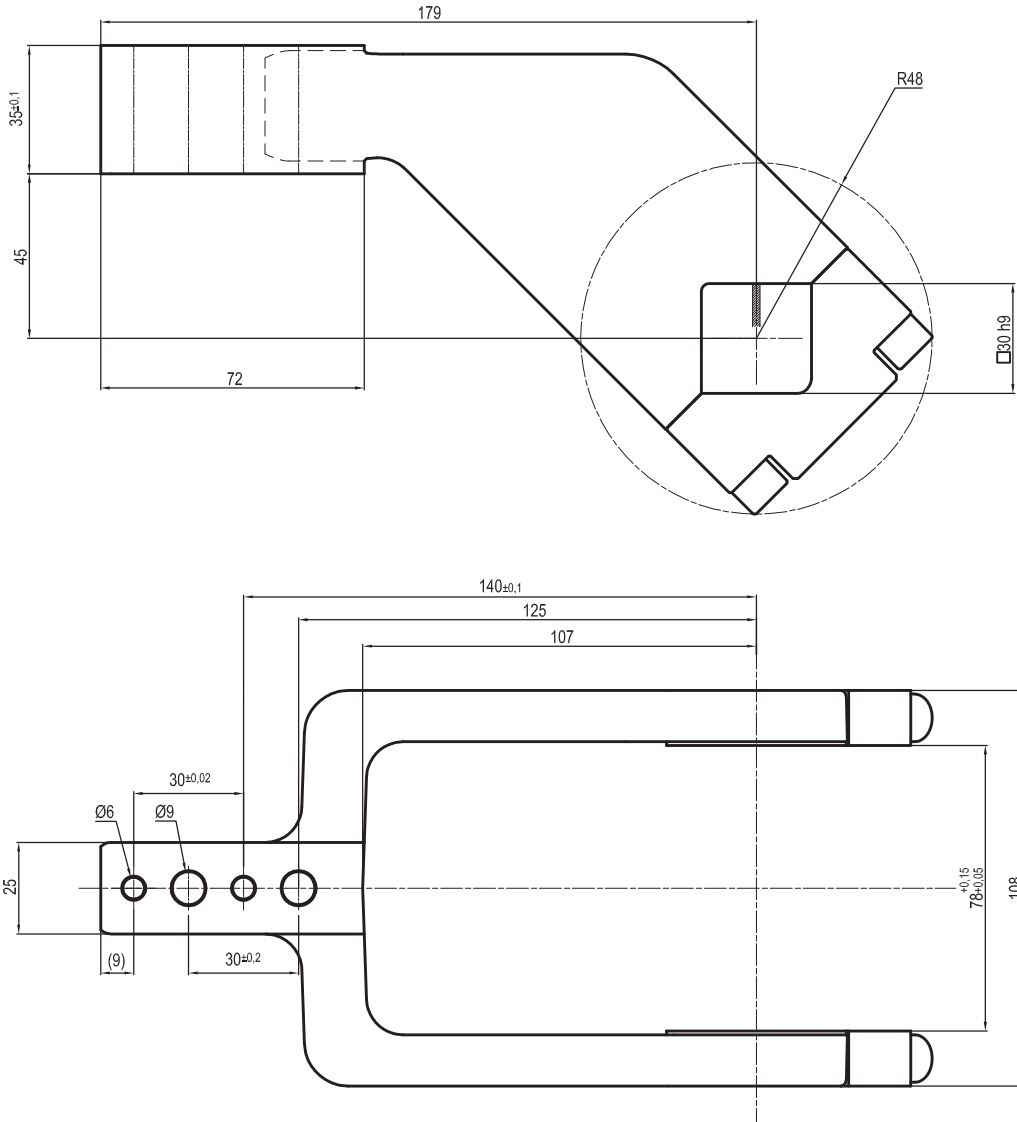
Subject to technical modifications without notice

Rev. 00 21.07.20



UKP80E

□ 30 mm - offset 45 mm



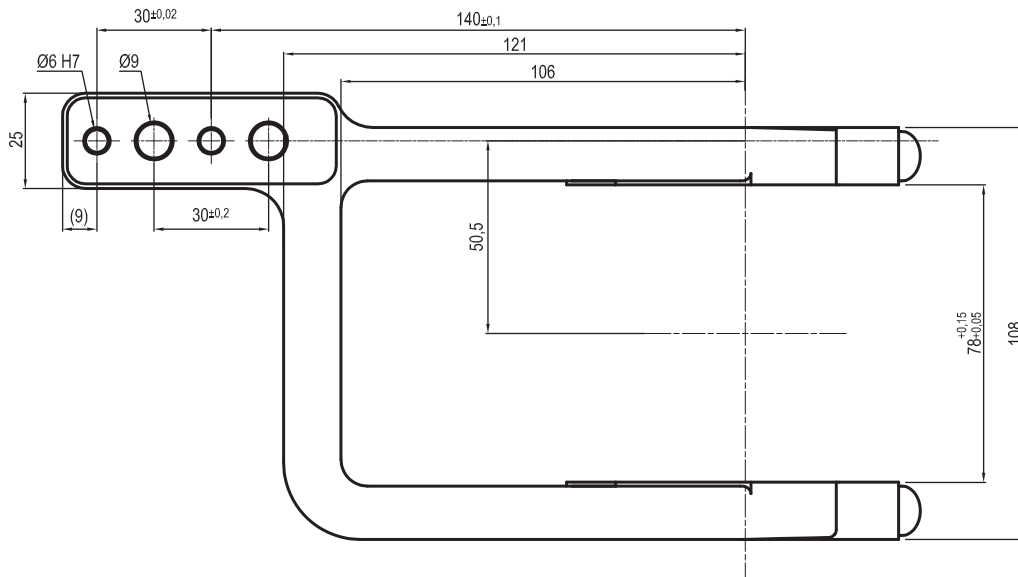
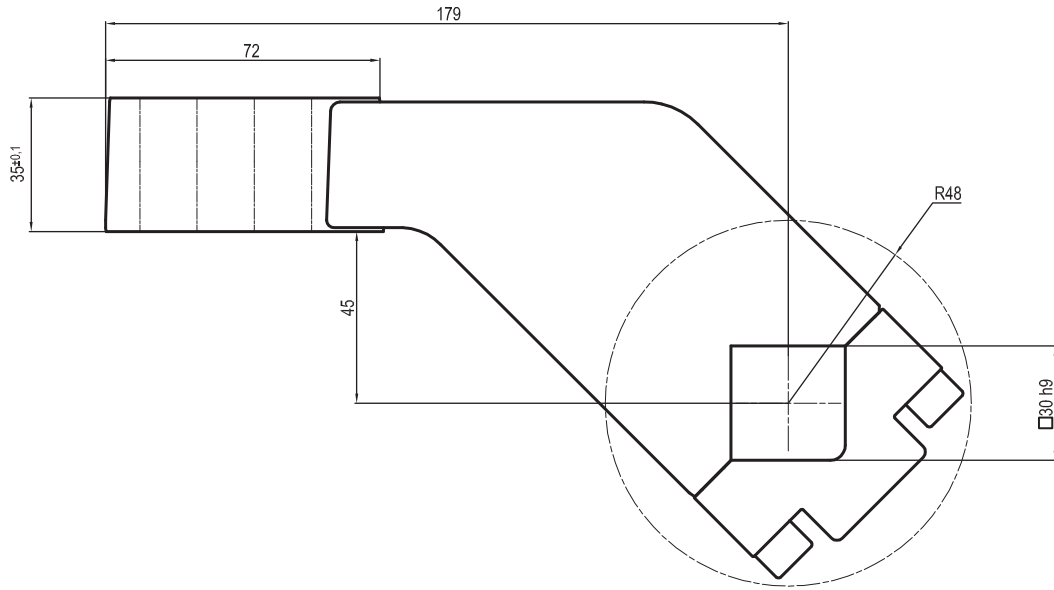
Clamp size	Material	Weight
80 mm	Aluminium	0,6 Kg

THE CLAMPING ARM INCLUDES THE NECESSARY SCREWS

Subject to technical modifications without notice

**UKP80F**

□ 30 mm - offset 45 mm



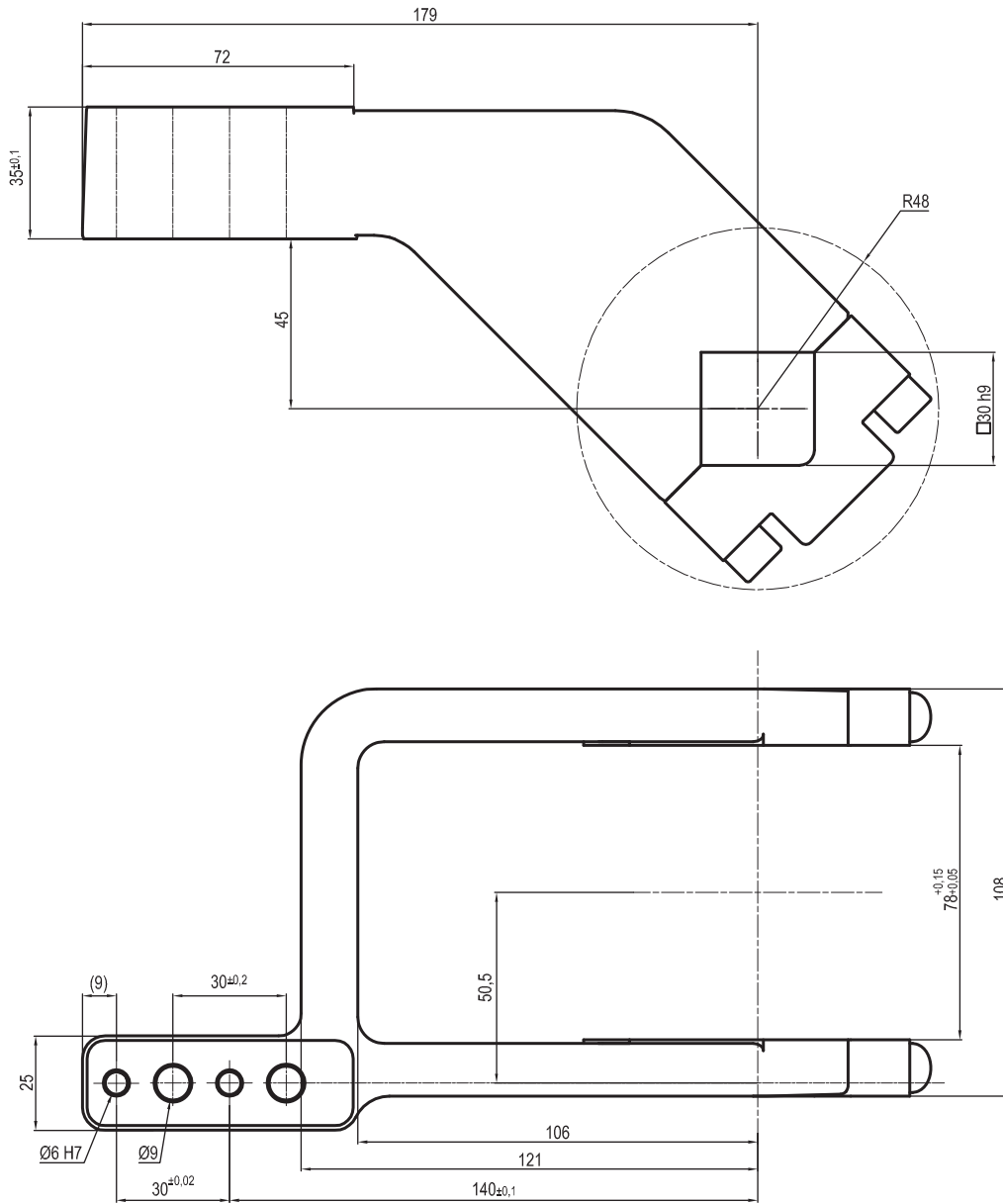
Clamp size	Material	Weight
80 mm	Aluminium	0,6 Kg

THE CLAMPING ARM INCLUDES THE NECESSARY SCREWS

Subject to technical modifications without notice

**UKP80L**

□ 30 mm - offset 45 mm



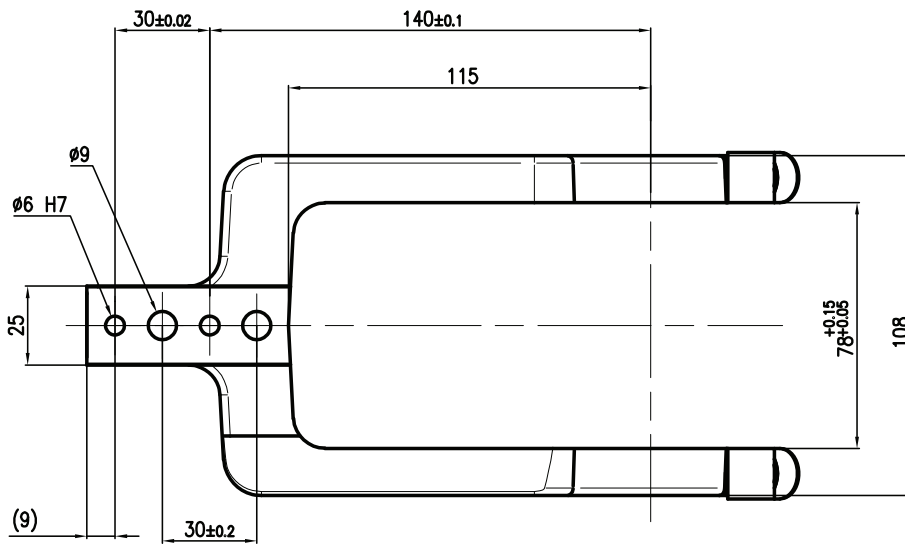
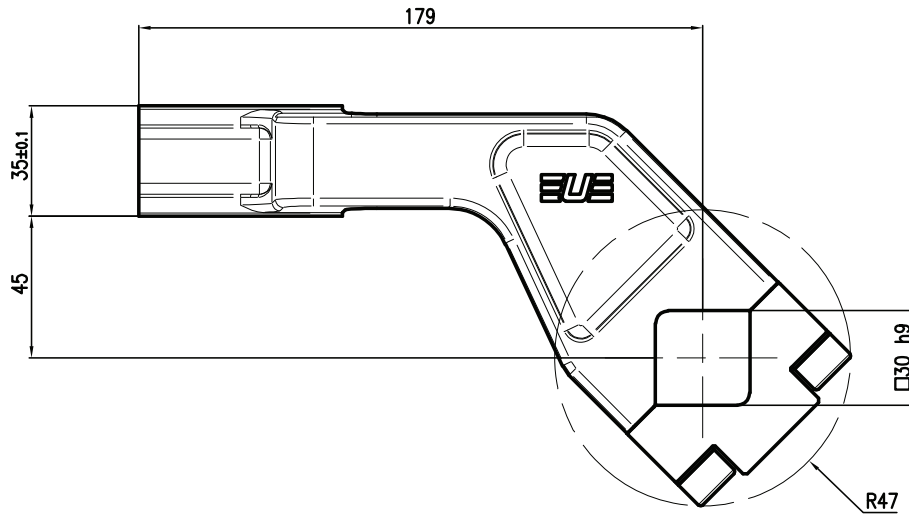
Clamp size	Material	Weight
80 mm	Aluminium	0,6 Kg

THE CLAMPING ARM INCLUDES THE NECESSARY SCREWS

Subject to technical modifications without notice

UKP80ES

□ 30 mm - offset 45 mm



Clamp size	Material	Weight
80 mm	Steel	2,2 Kg

THE CLAMPING ARM INCLUDES THE NECESSARY SCREWS

Subject to technical modifications without notice