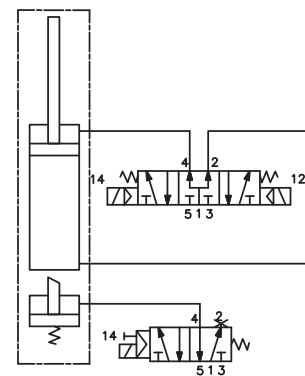


Pivot rotation in degrees	A
45°	583.5
60°	597
90°	628
120°	662.5

Passive brake


**UAGP155OA\_\_BS0**
**6 PIVOT ROTATION**
**6**

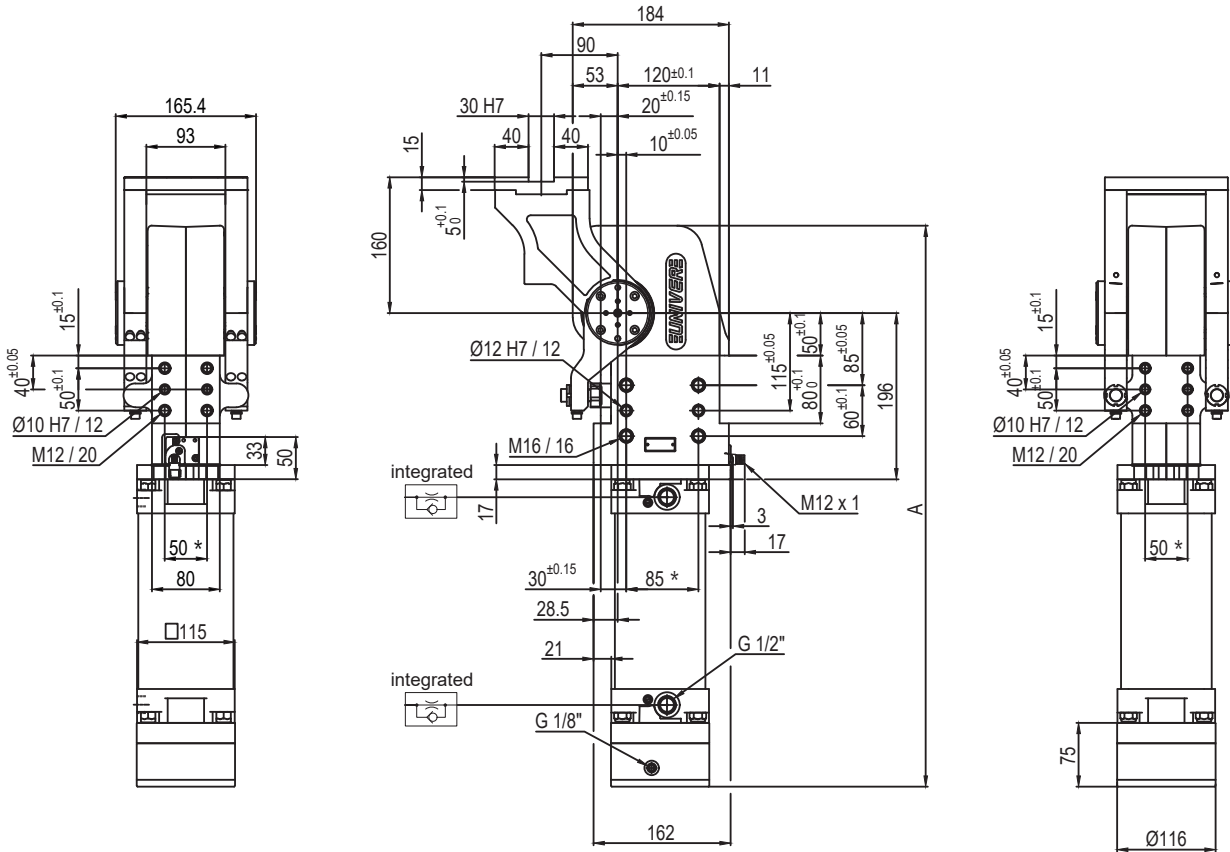
 120 = 120°  
 090 = 90°  
 060 = 60°  
 045 = 45°

Size	Holding moment	Max. torque at the rotary table 0,55 MPa	Weight
155	6000 Nm	120 Nm	25 Kg

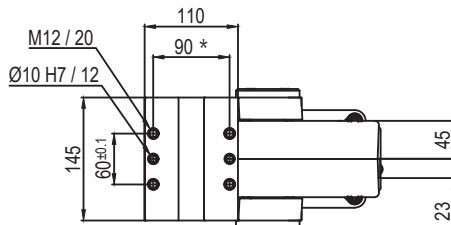
Min./Max. operating pressure: **0,4 / 0,6 MPa**  
 Operating temperature: **5° ÷ 45° C**  
 Predetermine pivot rotation in degrees: **45°- 60°- 90°- 120°**  
 Rotary table position: **Horizontal 90°**  
 Electronic sensor with M12 swivel connector, from 0° to 90°  
 Supply voltage: **10 ÷ 30 Vdc**  
 IP code: **IP 65**

\*: TOLERANCE BETWEEN DOWEL HOLES ± 0,02, BETWEEN SCREW HOLES ± 0,1

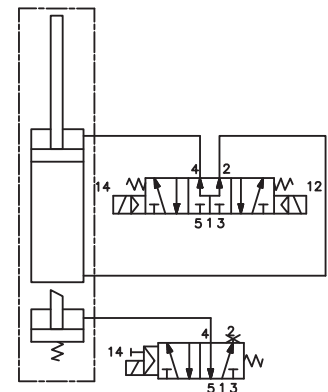
Subject to technical modifications without notice



Pivot rotation in degrees	A
45°	583.5
60°	597
90°	628
120°	662.5



Passive brake



UAGP155OK\_\_BS0

6 PIVOT ROTATION

6

- 120 = 120°
- 090 = 90°
- 060 = 60°
- 045 = 45°

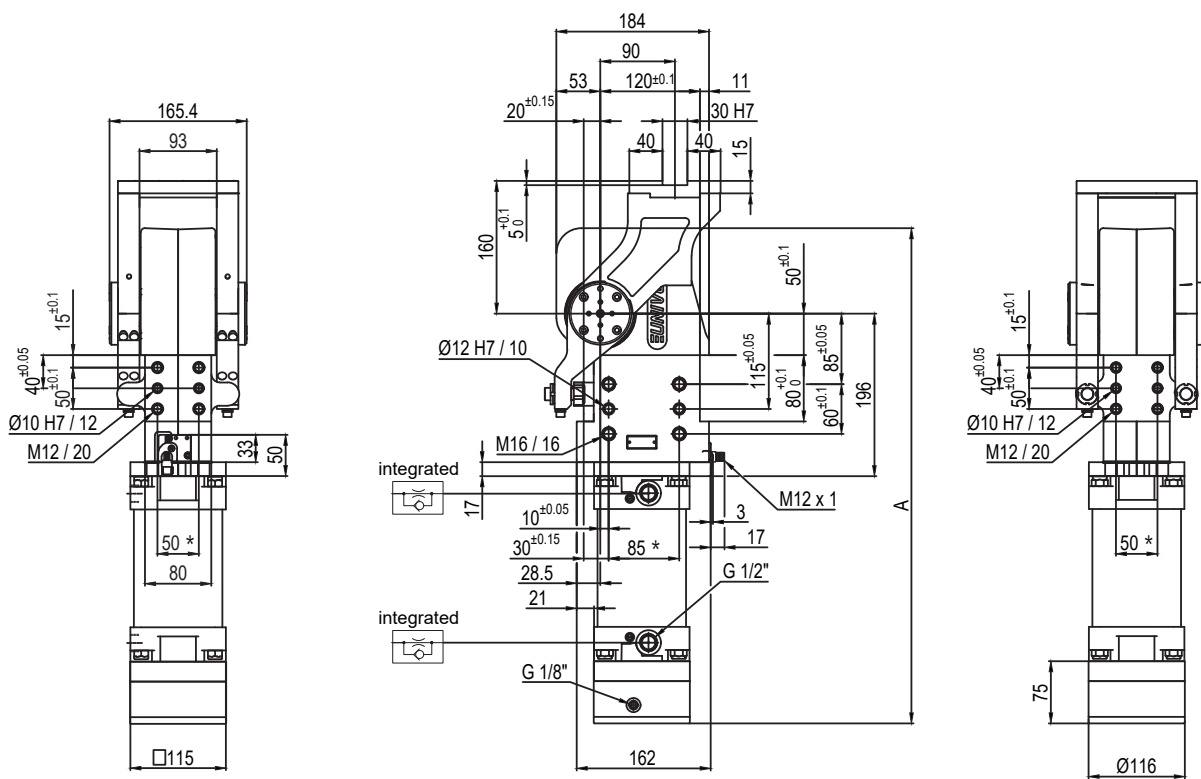
Size	Holding moment	Max. torque at the rotary table 0,55 MPa	Weight
155	6000 Nm	120 Nm	25 Kg

Min./Max. operating pressure: **0,4 / 0,6 MPa**  
 Operating temperature: **5° ÷ 45° C**  
 Predetermine pivot rotation in degrees: **45°- 60°- 90°- 120°**  
 Rotary table position: **Horizontal 90°**  
 Electronic sensor with M12 swivel connector, from 0° to 90°  
 Supply voltage: **10 ÷ 30 Vdc**  
 IP code: **IP 65**

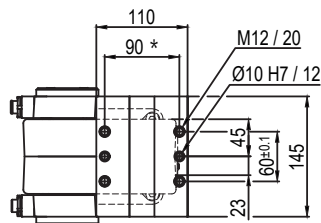
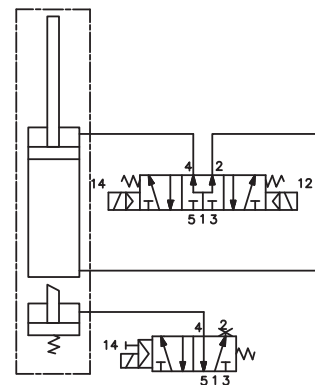
\*: TOLERANCE BETWEEN DOWEL HOLES ± 0,02, BETWEEN SCREW HOLES ± 0,1

Subject to technical modifications without notice





Pivot rotation in degrees	A
45°	583.5
60°	597


**Passive brake**

**UAGP155PK\_\_BS0**
**6 PIVOT ROTATION**
**6**

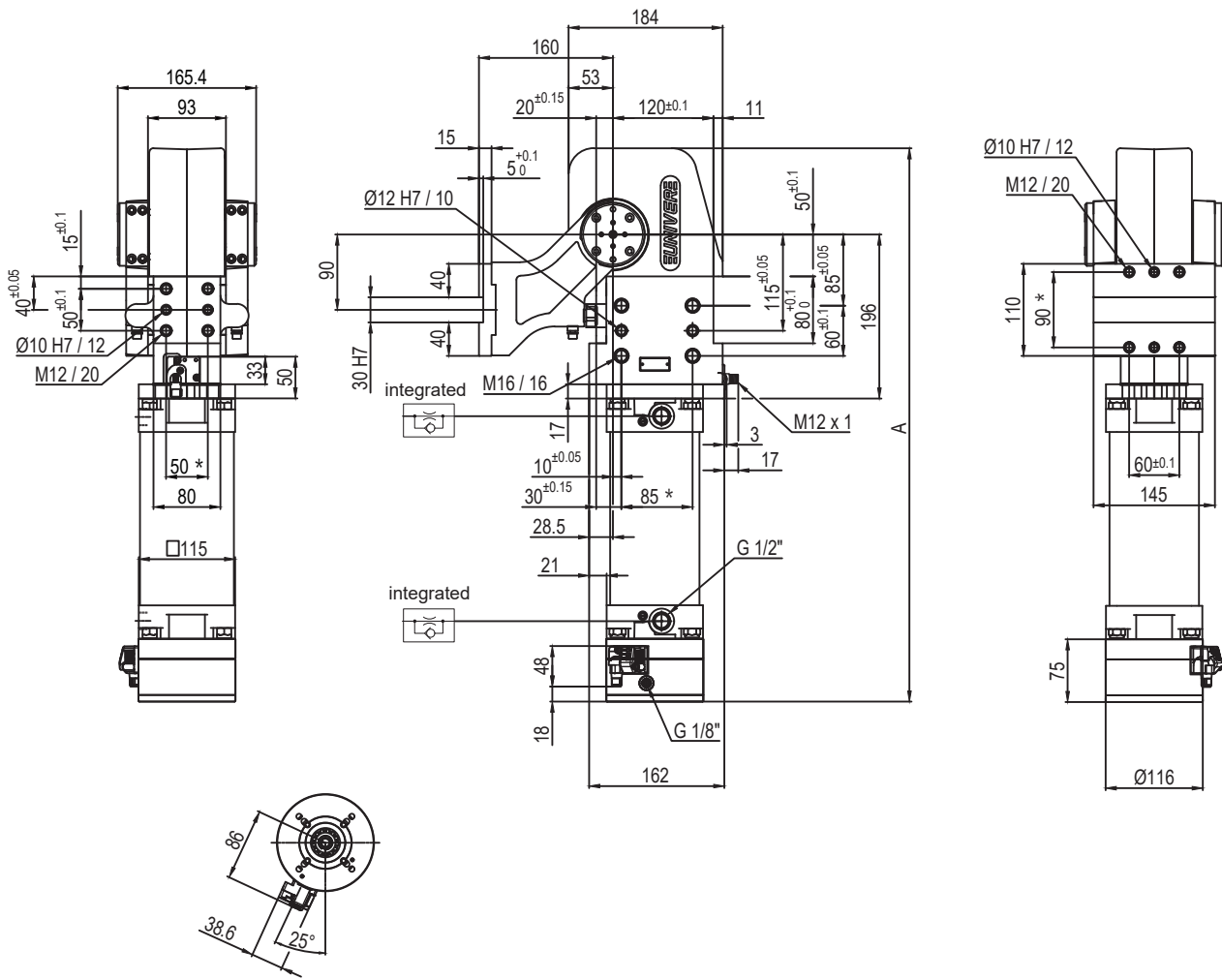
 060 = 60°  
 045 = 45°

Size	Holding moment	Max. torque at the rotary table 0,55 MPa	Weight
155	6000 Nm	120 Nm	25 Kg

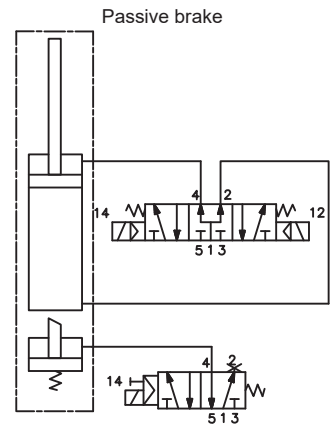
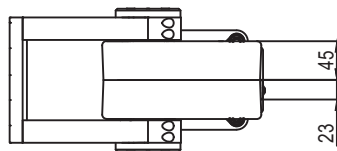
Min./Max. operating pressure: **0,4 / 0,6 MPa**  
 Operating temperature: **5° ÷ 45° C**  
 Predetermine pivot rotation in degrees: **45° - 60°**  
 Rotary table position: **Horizontal mirror of O**  
 Electronic sensor with M12 swivel connector, from 0° to 90°  
 Supply voltage: **10 ÷ 30 Vdc**  
 IP code: **IP 65**

\*: TOLERANCE BETWEEN DOWEL HOLES ± 0,02, BETWEEN SCREW HOLES ± 0,1

Subject to technical modifications without notice



Pivot rotation in degrees	A
45°	583.5
60°	597
90°	628
120°	662.5



## UAGP155VA\_\_BS0

### 6 PIVOT ROTATION

6

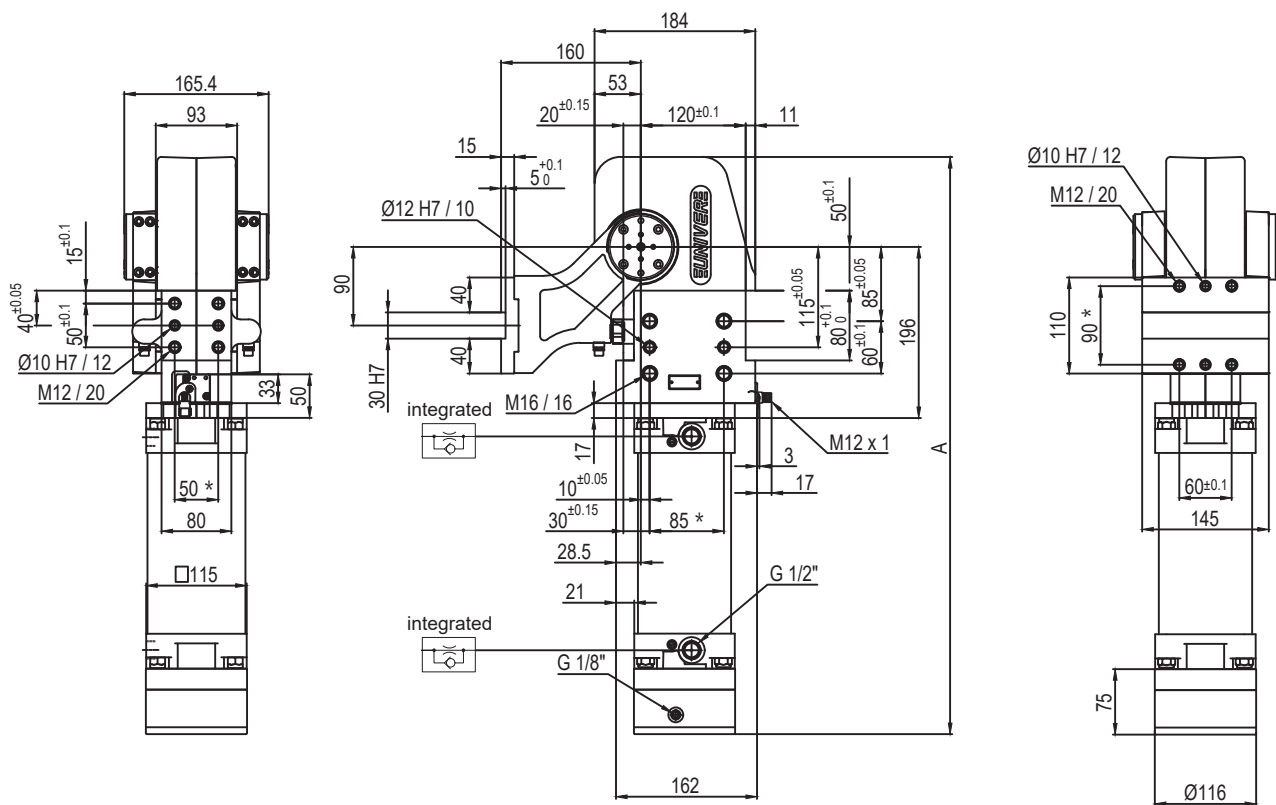
- 120 = 120°
- 090 = 90°
- 060 = 60°
- 045 = 45°

Size	Holding moment	Max. torque at the rotary table 0,55 MPa	Weight
155	6000 Nm	120 Nm	25 Kg

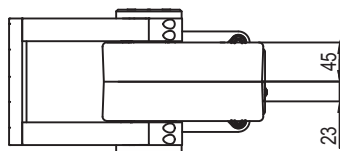
Min./Max. operating pressure: **0,4 / 0,6 MPa**  
 Operating temperature: **5° ÷ 45° C**  
 Predetermine pivot rotation in degrees: **45° - 60° - 90° - 120°**  
 Rotary table position: **Vertical 180°**  
 Electronic sensor with M12 swivel connector, from 0° to 90°  
 Supply voltage: **10 ÷ 30 Vdc**  
 IP code: **IP 65**

\*: TOLERANCE BETWEEN DOWEL HOLES ± 0,02, BETWEEN SCREW HOLES ± 0,1

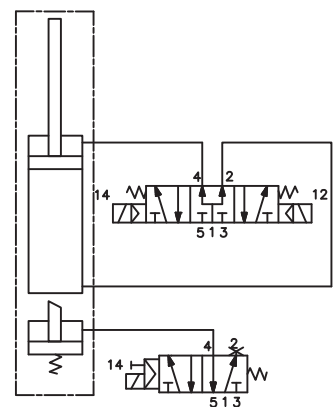
Subject to technical modifications without notice



Pivot rotation in degrees	A
45°	583.5
60°	597
90°	628
120°	662.5



Passive brake



## UAGP155VK\_\_BS0

### 6 PIVOT ROTATION

6

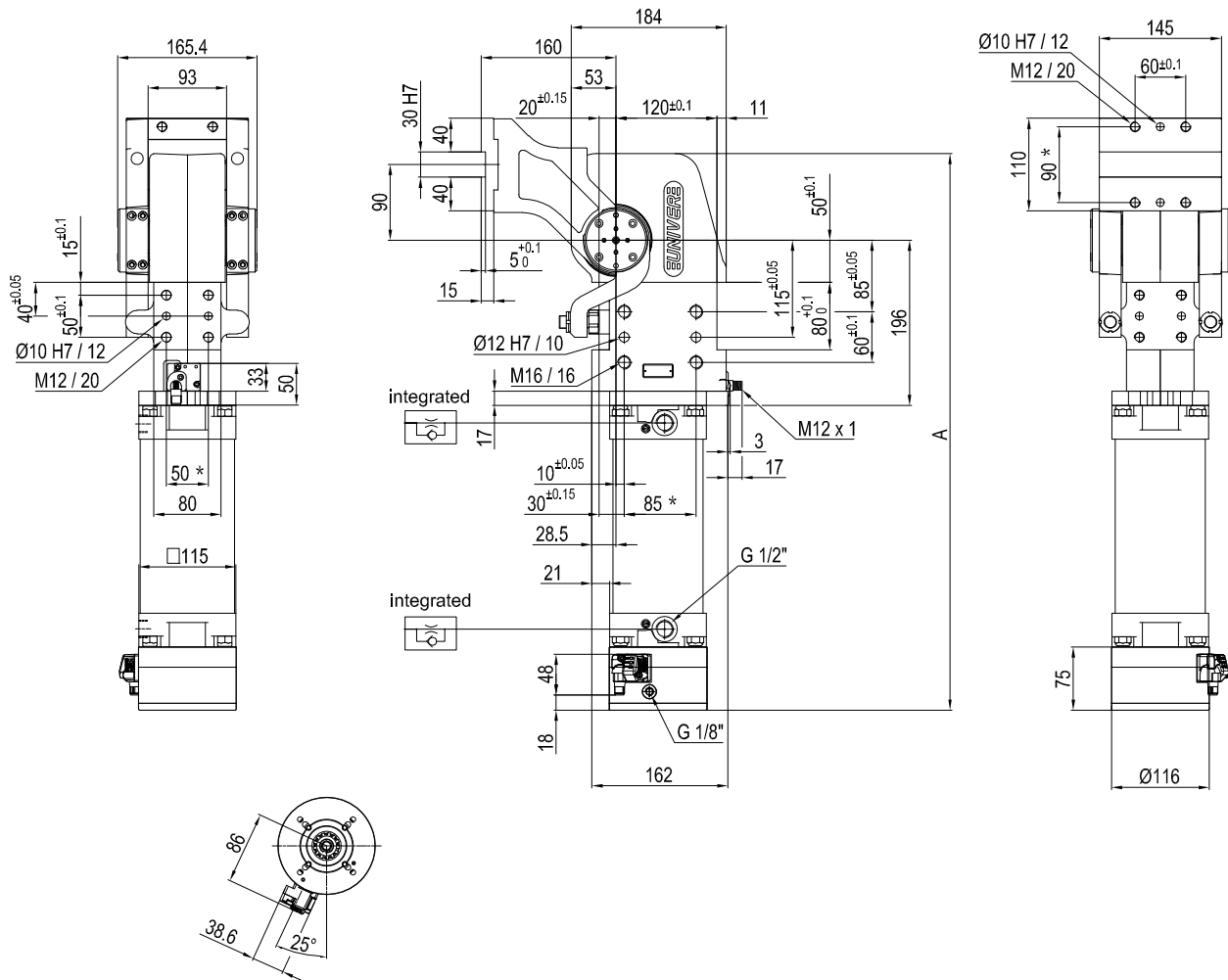
120 = 120°  
090 = 90°  
060 = 60°  
045 = 45°

Size	Holding moment	Max. torque at the rotary table 0,55 MPa	Weight
155	6000 Nm	120 Nm	25 Kg

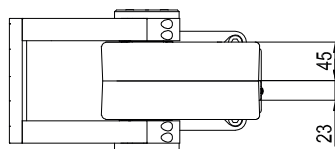
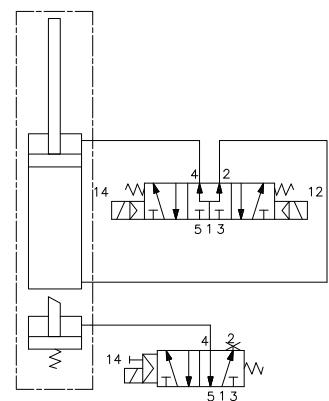
Min./Max. operating pressure: **0,4 / 0,6 MPa**  
 Operating temperature: **5° ÷ 45° C**  
 Predetermine pivot rotation in degrees: **45° - 60° - 90° - 120°**  
 Rotary table position: **Vertical 180°**  
 Electronic sensor with M12 swivel connector, from 0° to 90°  
 Supply voltage: **10 ÷ 30 Vdc**  
 IP code: **IP 65**

\*: TOLERANCE BETWEEN DOWEL HOLES ± 0,02, BETWEEN SCREW HOLES ± 0,1

Subject to technical modifications without notice



Pivot rotation in degrees	A
45°	583.5
60°	597
90°	628
120°	662.5


**Passive brake**

**UAGP155ZA\_\_BS0**
**6 PIVOT ROTATION**
**6**

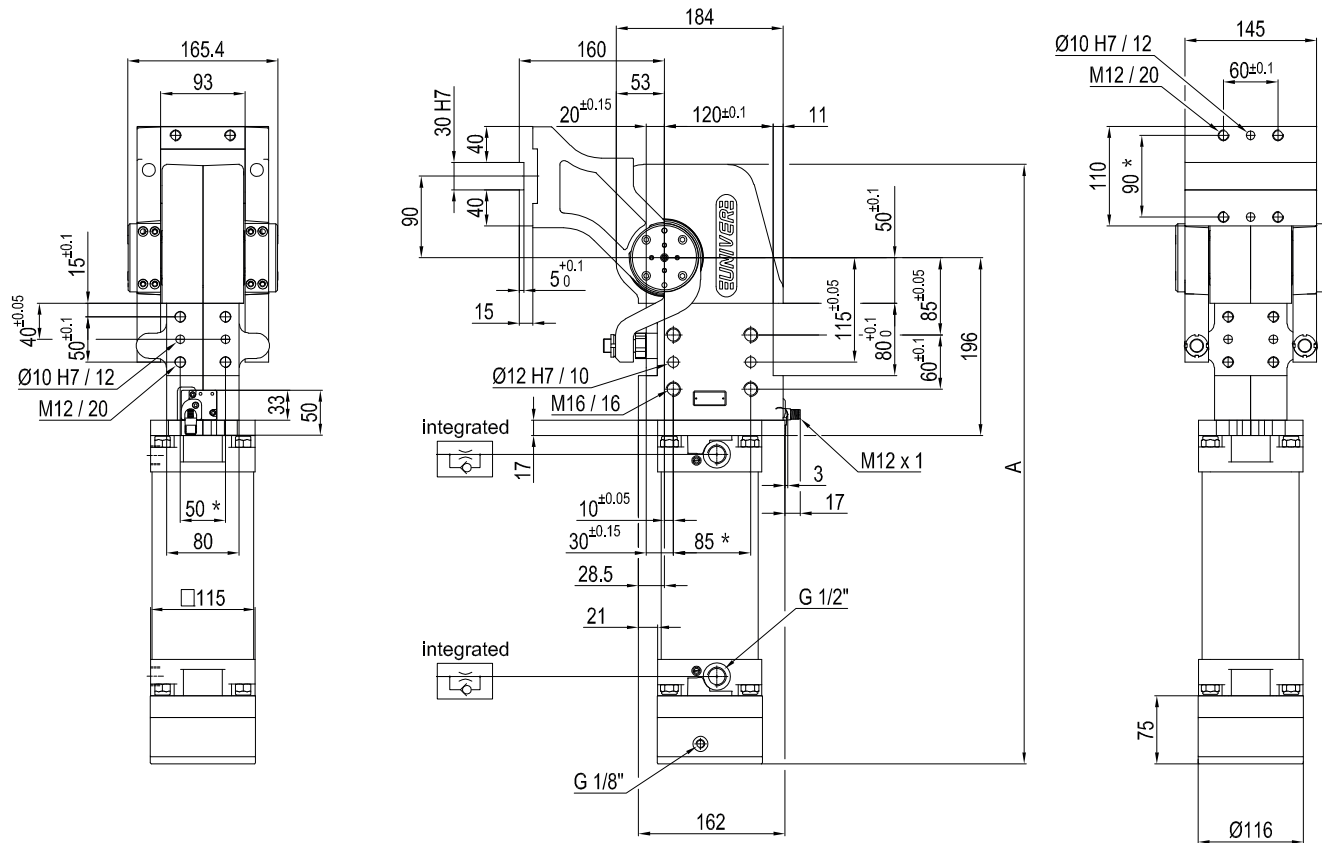
- 120 = 120°
- 090 = 90°
- 060 = 60°
- 045 = 45°

Size	Holding moment	Max. torque at the rotary table 0,55 MPa	Weight
155	6000 Nm	120 Nm	25 Kg

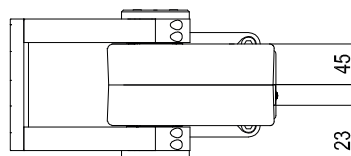
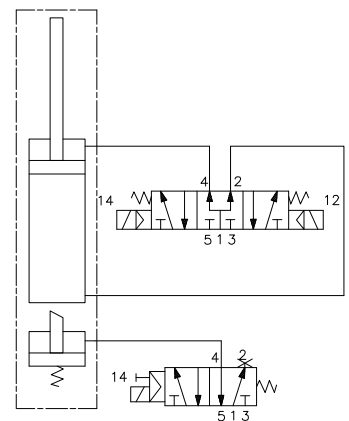
Min./Max. operating pressure: **0,4 / 0,6 MPa**  
 Operating temperature: **5° ÷ 45° C**  
 Predetermine pivot rotation in degrees: **45° - 60° - 90° - 120°**  
 Rotary table position: **Vertical mirror of V**  
 Electronic sensor with M12 swivel connector, from 0° to 90°  
 Supply voltage: **10 ÷ 30 Vdc**  
 IP code: **IP 65**

\* : TOLERANCE BETWEEN DOWEL HOLES ± 0,02, BETWEEN SCREW HOLES ± 0,1

Subject to technical modifications without notice



Pivot rotation in degrees	A
45°	583.5
60°	597
90°	628
120°	662.5


**Passive brake**

**UAGP155ZK\_ \_ \_BS0**
**6 PIVOT ROTATION**
**6**

- 120 = 120°
- 090 = 90°
- 060 = 60°
- 045 = 45°

Size	Holding moment	Max. torque at the rotary table 0,55 MPa	Weight
155	6000 Nm	120 Nm	25 Kg

Min./Max. operating pressure: **0,4 / 0,6 MPa**  
 Operating temperature: **5° ÷ 45° C**  
 Predetermine pivot rotation in degrees: **45° - 60° - 90° - 120°**  
 Rotary table position: **Vertical mirror of V**  
 Electronic sensor with M12 swivel connector, from 0° to 90°  
 Supply voltage: **10 ÷ 30 Vdc**  
 IP code: **IP 65**

\*: TOLERANCE BETWEEN DOWEL HOLES ± 0,02, BETWEEN SCREW HOLES ± 0,1

Subject to technical modifications without notice