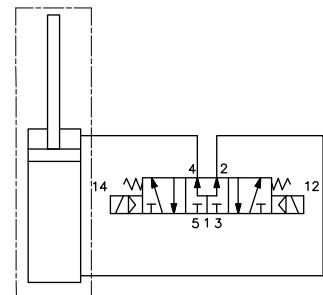
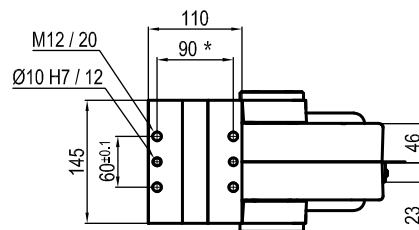


Pivot rotation in degrees	A
45°	504
60°	518
90°	549
120°	583.5


UAGP075OK __ _WS0
6 PIVOT ROTATION
6

120 = 120°
 090 = 90°
 060 = 60°
 045 = 45°

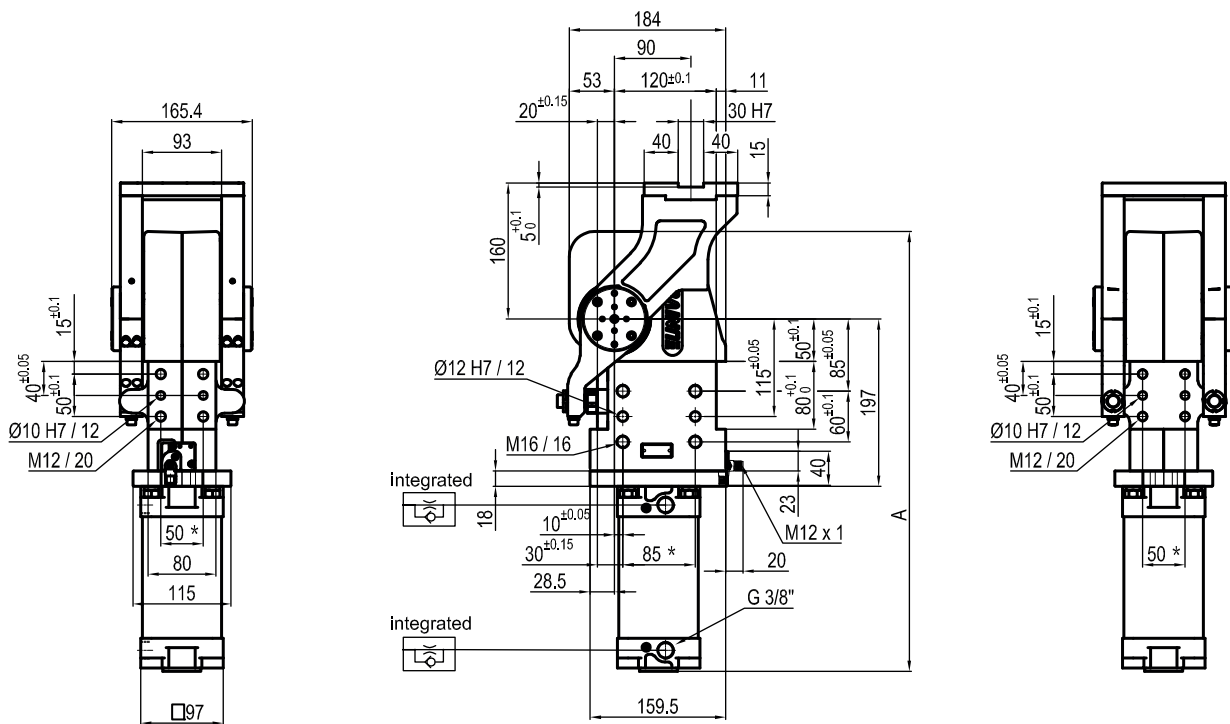
Size	Holding moment	Max. torque at the rotary table 0,55 MPa	Weight
75	6000 Nm	75 Nm	18 Kg

Min./Max. operating pressure: **0,4 / 0,6 MPa**
 Operating temperature: **5° ± 45° C**
 Predetermine pivot rotation in degrees: **45°- 60°- 90°- 120°**
 Rotary table position: **Horizontal 90°**
 Electronic sensor with M12 swivel connector, from 0° to 90°
 Supply voltage: **10 ÷ 30 Vdc**
 IP code: **IP 65**

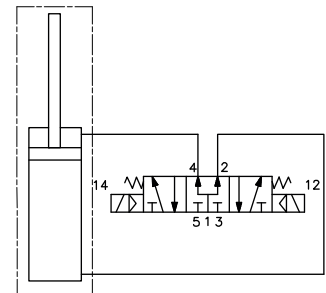
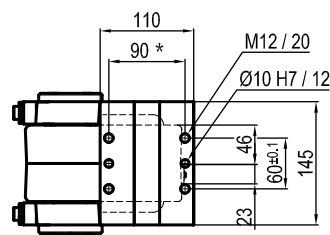
* : TOLERANCE BETWEEN DOWEL HOLES ± 0,02, BETWEEN SCREW HOLES ± 0,1

Subject to technical modifications without notice

Rev. 00 01.04.20



Pivot rotation in degrees	A
45°	504
60°	518


UAGP075PK __ _WSO
6 PIVOT ROTATION
6

 060 = 60°
 045 = 45°

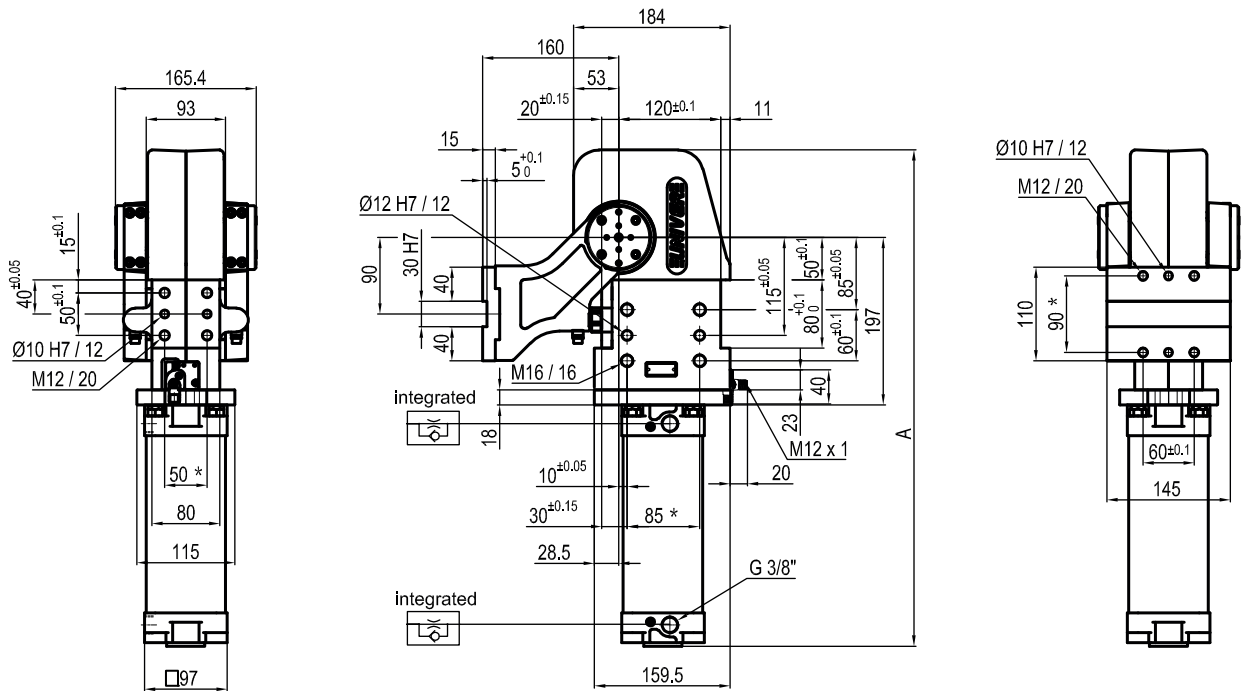
Size	Holding moment	Max. torque at the rotary table 0,55 MPa	Weight
75	6000 Nm	75 Nm	18 Kg

Min./Max. operating pressure: **0,4 / 0,6 MPa**
 Operating temperature: **5° ÷ 45° C**
 Predetermine pivot rotation in degrees: **45°- 60°**
 Rotary table position: **Horizontal mirror of O**
 Electronic sensor with M12 swivel connector, from 0° to 90°
 Supply voltage: **10 ÷ 30 Vdc**
 IP code: **IP 65**

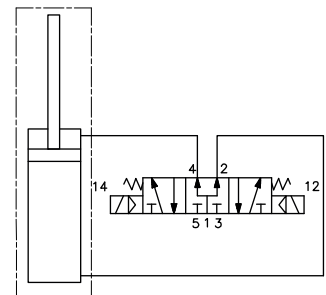
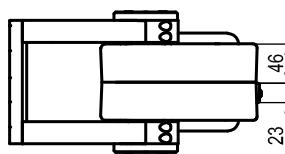
*: TOLERANCE BETWEEN DOWEL HOLES ± 0,02, BETWEEN SCREW HOLES ± 0,1

Subject to technical modifications without notice

Rev. 00 01.04.20



Pivot rotation in degrees	A
45°	504
60°	518
90°	549
120°	583.5


UAGP075VK __ _WS0
6 PIVOT ROTATION
6

- 120 = 120°
- 090 = 90°
- 060 = 60°
- 045 = 45°

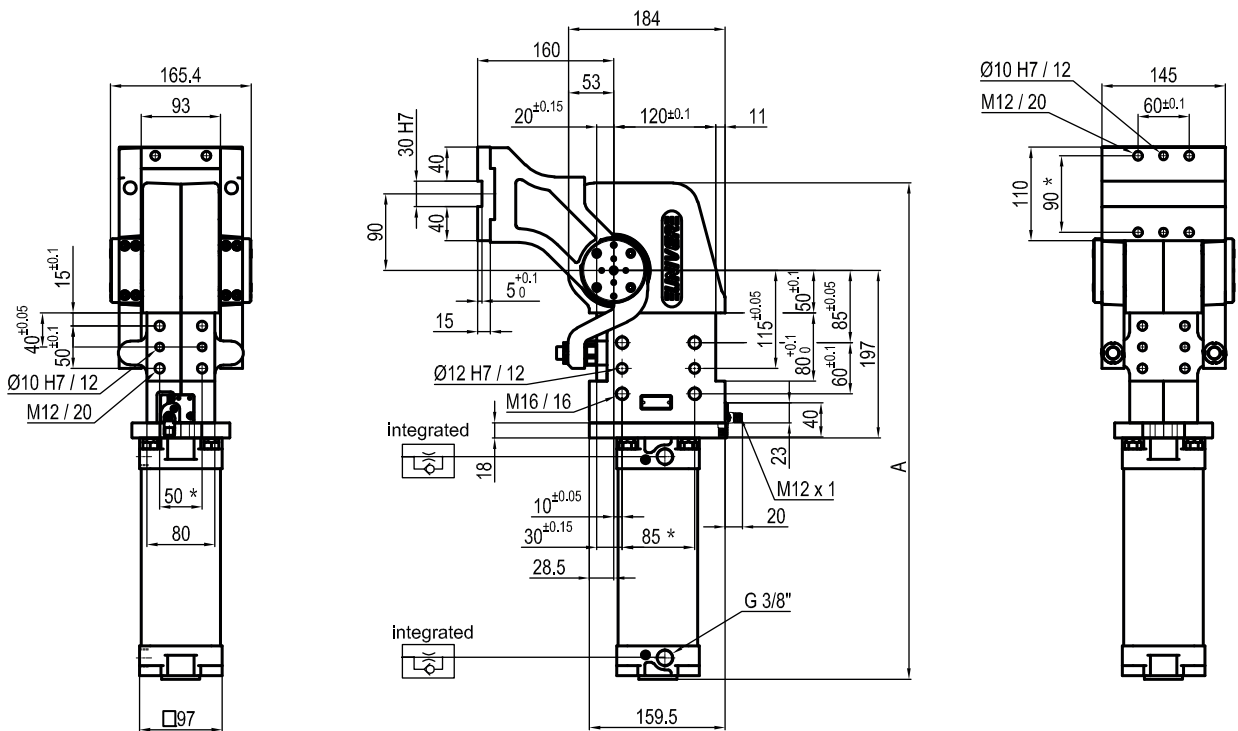
Size	Holding moment	Max. torque at the rotary table 0,55 MPa	Weight
75	6000 Nm	75 Nm	18 Kg

Min./Max. operating pressure: **0,4 / 0,6 MPa**
 Operating temperature: **5° ÷ 45° C**
 Predetermine pivot rotation in degrees: **45°- 60°- 90°-120°**
 Rotary table position: **Vertical 180°**
 Electronic sensor with M12 swivel connector, from 0° to 90°
 Supply voltage: **10 ÷ 30 Vdc**
 IP code: **IP 65**

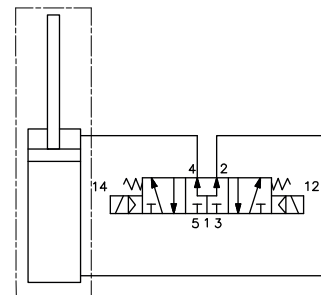
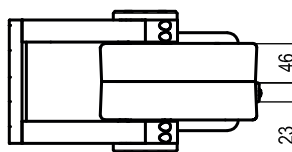
* : TOLERANCE BETWEEN DOWEL HOLES ± 0,02, BETWEEN SCREW HOLES ± 0,1

Subject to technical modifications without notice

Rev. 00 01.04.20



Pivot rotation in degrees	A
45°	504
60°	518
90°	549
120°	583.5


UAGP075ZK__ _WS0
6 PIVOT ROTATION
6

120 = 120°
 090 = 90°
 060 = 60°
 045 = 45°

Size	Holding moment	Max. torque at the rotary table 0,55 MPa	Weight
75	6000 Nm	75 Nm	18 Kg

Min./Max. operating pressure: **0,4 / 0,6 MPa**
 Operating temperature: **5° ÷ 45° C**
 Predetermine pivot rotation in degrees: **45°- 60°- 90°-120°**
 Rotary table position: **Vertical mirror of V**
 Electronic sensor with M12 swivel connector, from 0° to 90°
 Supply voltage: **10 ÷ 30 Vdc**
 IP code: **IP 65**

* : TOLERANCE BETWEEN DOWEL HOLES ± 0,02, BETWEEN SCREW HOLES ± 0,1

Subject to technical modifications without notice

Rev. 00 01.04.20