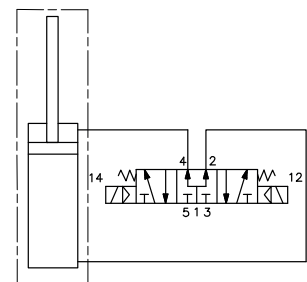


| Pivot rotation in degrees | A |
|---------------------------|-------|
| 45° | 307.5 |
| 60° | 315.5 |
| 90° | 333 |


UAGP063OK__W0
6 PIVOT ROTATION
6

 090 = 90°
 060 = 60°
 045 = 45°

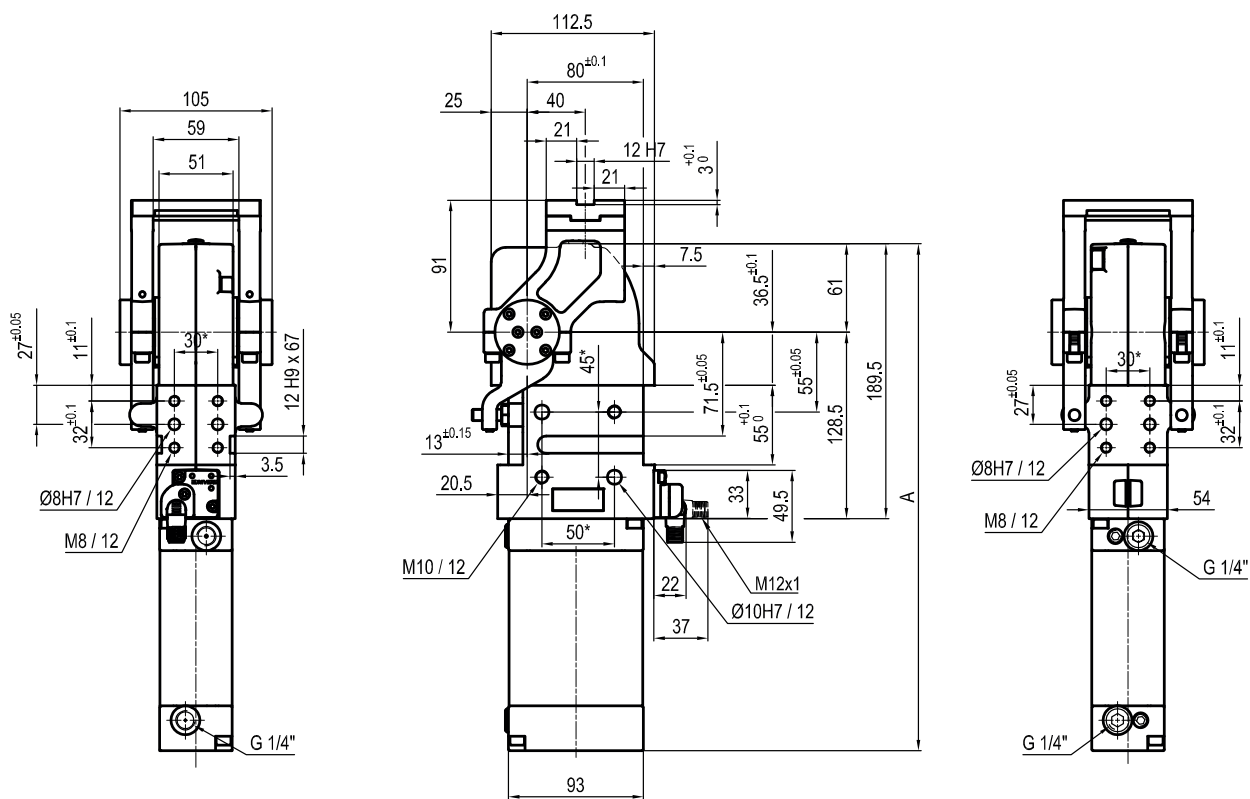
| Size | Holding moment | Max. torque at the rotary table 0,55 MPa | Weight |
|------|----------------|--|--------|
| 63 | 1500 Nm | 16 Nm | 5 Kg |

Min./Max. operating pressure: **0,4 / 0,6 MPa**
 Operating temperature: **5° ÷ 45° C**
 Predetermine pivot rotation in degrees: **45° - 60° - 90°**
 Rotary table position: **Horizontal 90°**
 Electronic sensor with M12 swivel connector, from 0° to 90°
 Supply voltage: **10 ÷ 30 Vdc**
 IP code: **IP 65**
 Pneumatic ports on both sides

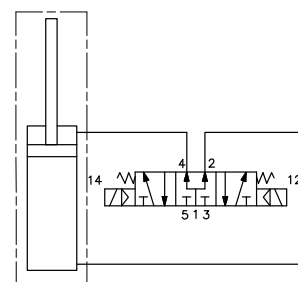
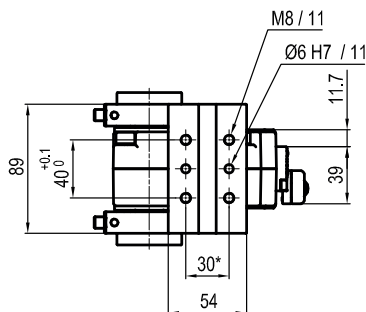
*: TOLERANCE BETWEEN DOWEL HOLES ± 0,02, BETWEEN SCREW HOLES ± 0,1

Subject to technical modifications without notice

Rev. 00 10.11.22



| Pivot rotation in degrees | A |
|---------------------------|-------|
| 45° | 307.5 |
| 60° | 315.5 |


UAGP063PK __ __ W0
6 PIVOT ROTATION
6

 060 = 60°
 045 = 45°

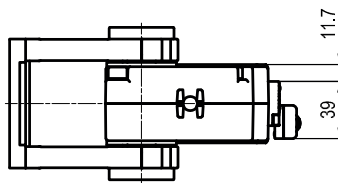
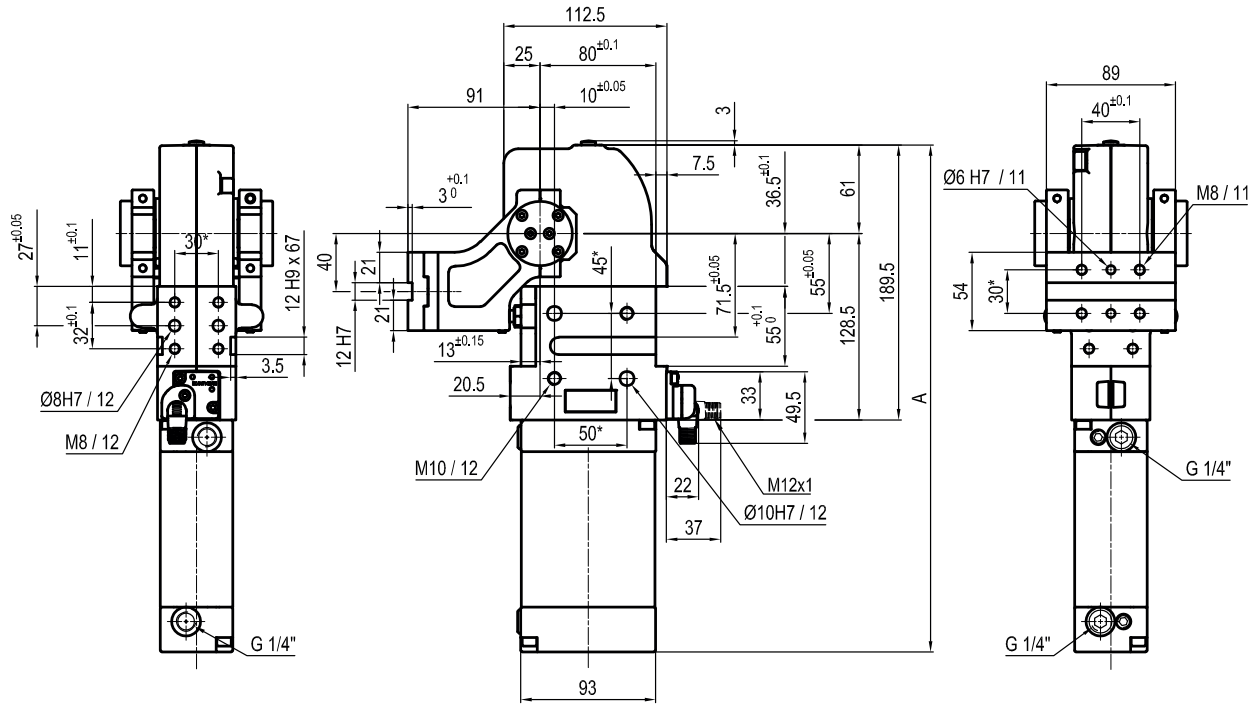
| Size | Holding moment | Max. torque at the rotary table 0,55 MPa | Weight |
|------|----------------|--|--------|
| 63 | 1500 Nm | 16 Nm | 5 Kg |

Min./Max. operating pressure: **0,4 / 0,6 MPa**
 Operating temperature: **5° ÷ 45° C**
 Predetermine pivot rotation in degrees: **45° - 60°**
 Rotary table position: **Horizontal mirror of O**
 Electronic sensor with M12 swivel connector, from 0° to 90°
 Supply voltage: **10 ÷ 30 Vdc**
 IP code: **IP 65**
 Pneumatic ports on both sides

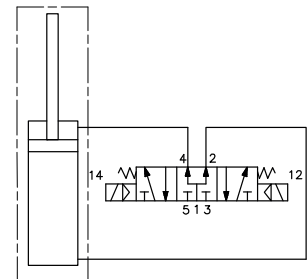
*: TOLERANCE BETWEEN DOWEL HOLES ± 0,02, BETWEEN SCREW HOLES ± 0,1

Subject to technical modifications without notice

Rev. 00 10.11.22



| Pivot rotation in degrees | A |
|---------------------------|-------|
| 45° | 307.5 |
| 60° | 315.5 |
| 90° | 333 |
| 120° | 349.5 |



UAGP063VK __ __ W0

6 PIVOT ROTATION

6

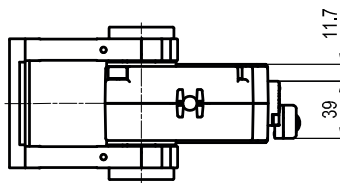
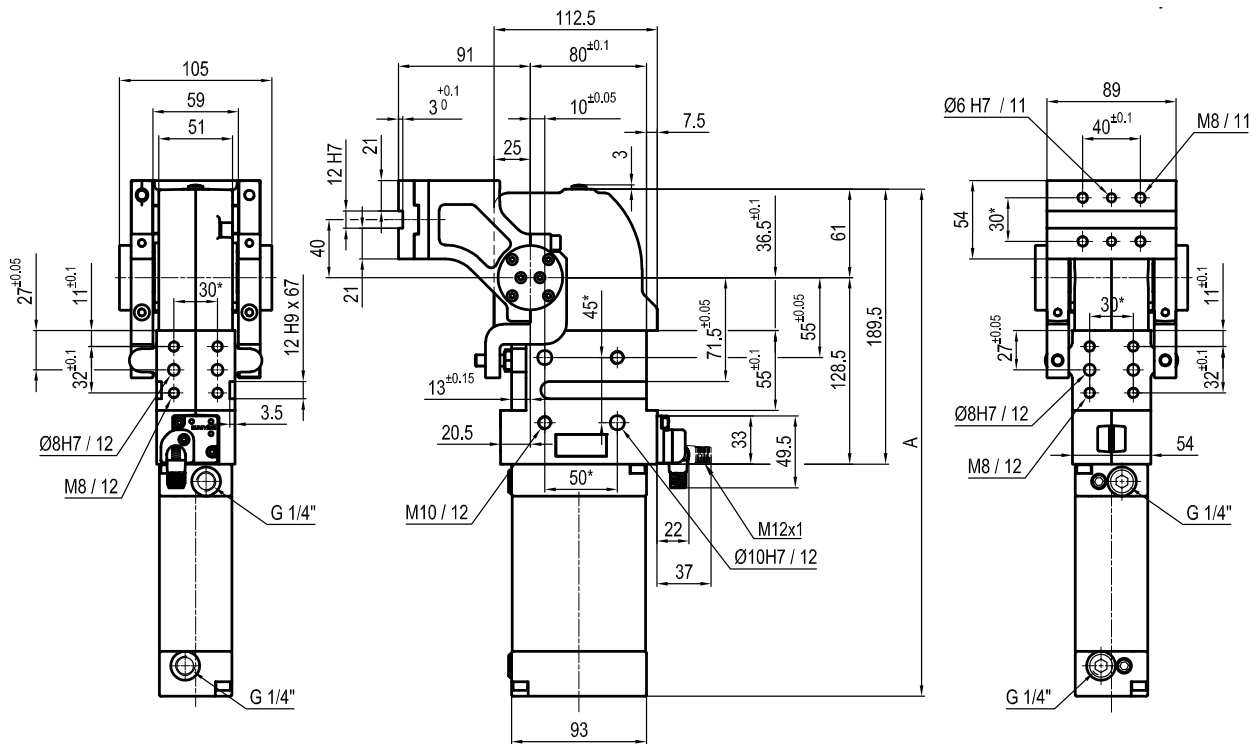
- 120 = 120°
- 090 = 90°
- 060 = 60°
- 045 = 45°

| Size | Holding moment | Max. torque at the rotary table 0,55 MPa | Weight |
|------|----------------|--|--------|
| 63 | 1500 Nm | 16 Nm | 5 Kg |

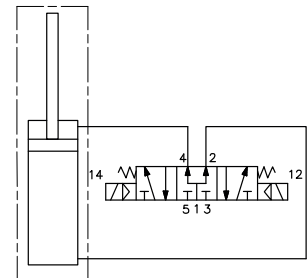
Min./Max. operating pressure: **0,4 / 0,6 MPa**
 Operating temperature: **5° ÷ 45° C**
 Predetermine pivot rotation in degrees: **45°- 60°-90°-120°**
 Rotary table position: **Vertical 180°**
 Electronic sensor with M12 swivel connector, from 0° to 90°
 Supply voltage: **10 ÷ 30 Vdc**
 IP code: **IP 65**
 Pneumatic ports on both sides

* : TOLERANCE BETWEEN DOWEL HOLES ± 0,02, BETWEEN SCREW HOLES ± 0,1

Subject to technical modifications without notice



| Pivot rotation in degrees | A |
|---------------------------|-------|
| 45° | 307.5 |
| 60° | 315.5 |
| 90° | 333 |
| 120° | 349.5 |



UAGP063ZK__W0

6 PIVOT ROTATION

6

- 120 = 120°
- 090 = 90°
- 060 = 60°
- 045 = 45°

| Size | Holding moment | Max. torque at the rotary table 0,55 MPa | Weight |
|------|----------------|--|--------|
| 63 | 1500 Nm | 16 Nm | 5 Kg |

Min./Max. operating pressure: **0,4 / 0,6 MPa**
 Operating temperature: **5° ÷ 45° C**
 Predetermine pivot rotation in degrees: **45°- 60°- 90°- 120°**
 Rotary table position: **Vertical mirror of V**
 Electronic sensor with M12 swivel connector, from 0° to 90°
 Supply voltage: **10 ÷ 30 Vdc**
 IP code: **IP 65**
 Pneumatic ports on both sides

*: TOLERANCE BETWEEN DOWEL HOLES ± 0,02, BETWEEN SCREW HOLES ± 0,1

Subject to technical modifications without notice

Rev. 00 10.11.22