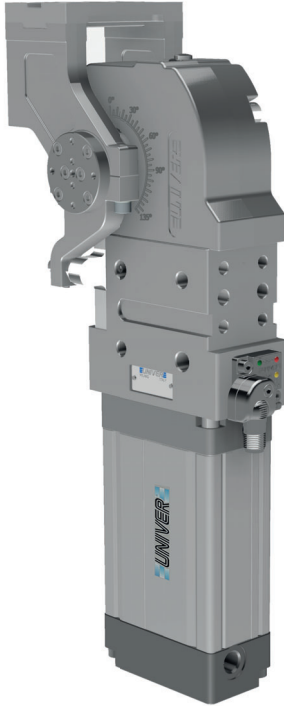


UAGP 063

Pneumatic power pivot 16 Nm without brake

Pneumatic power pivot without brake typically used to rotate and dump fixtures and parts in a desired position.



- High repeatability
- Mechanical stops
- Double pneumatic cushioning
- Fixing ports on 4 sides
- Roller bearings to support heavy load
- Orientable table in 4 pre-set positions
- Version with brake available

CHARACTERISTICS

Operating temperature	5° ÷ 45° C
Min./Max. Operating pressure	0,4 / 0,6 MPa
Bore Ø	63 mm
Pivot rotation	45°/60°/90°/120°
Holding moment	16 Nm
Max. torque at rotary table (0,55MPa)	16 Nm
Weight	5 kg
Pneumatic supply ports	G1/4
Sensor	electronic (optical)
Supply voltage	10 ÷ 30 Vdc
IP code	IP 65

CODIFICATION KEY

UAG | P | 063 | O | K | 090 | W | 0 | |

1 2 3 4 5 6 7 8 9



OPTICAL SENSOR



HIGH REPEATABILITY

1

SERIES
UAG = UNICLAMP Power pivot

2

VERSION
P = Pneumatic

3

SIZE
063 = 16 Nm Ø 63 mm

4

TABLE POSITION
O = Horizontal 90° *
P = Horizontal mirror of "O" **
V = Vertical 180°
Z = Vertical mirror of "V"
*Max opening angle 90°
**Max opening angle 60°

5

SENSOR
N = No sensor (with protection plate)
K = Electronic sensor PNP, M12 (DF-K)
Y = Electronic sensor PNP, M12 (DF-Y) white LED
J = Electronic sensor NPN, M12 (DF-J)

6

PIVOT ROTATION
120 = 120°
090 = 90°
060 = 60°
045 = 45°

7

BRAKE SYSTEM
W = Without brake

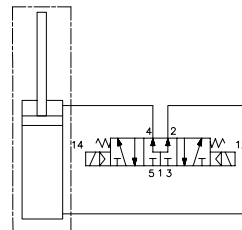
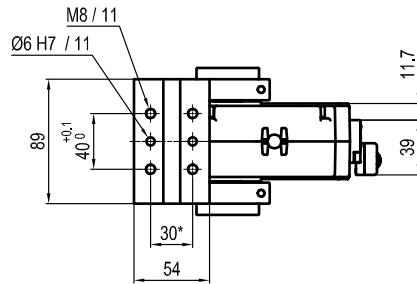
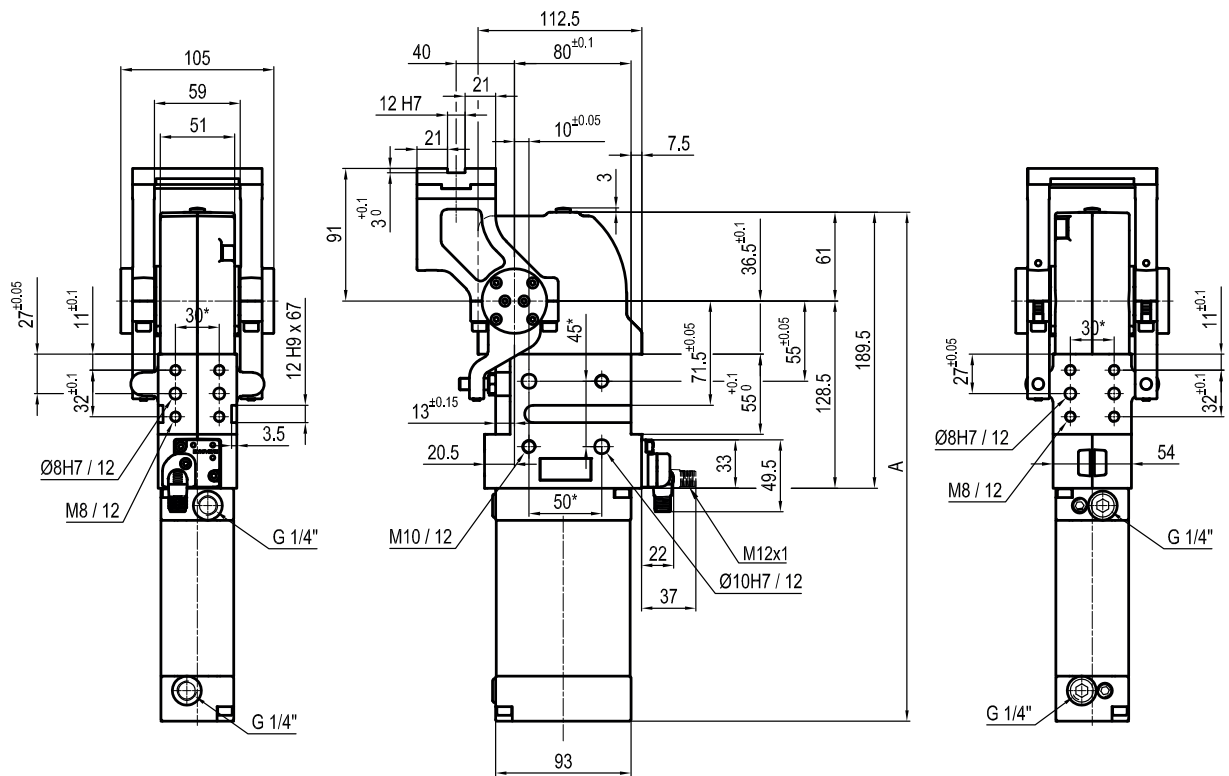
8

PRODUCT REVISION
Assigned by UNIVER

9

ATEX
X = ATEX option
See ATEX Catalogue for types and versions

Horizontal 90°



Pivot rotation (°)	A
45°	307.5
60°	315.5
90°	333
120°*	349.5

*TOLERANCE BETWEEN DOWELS ± 0,02 BETWEEN SCREW HOLES ± 0,1

*ONLY FOR TABLE POSITION "V" AND "Z"

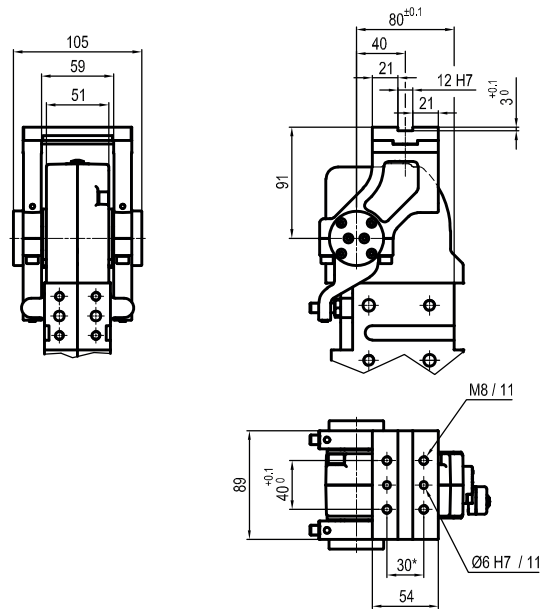
Sensors



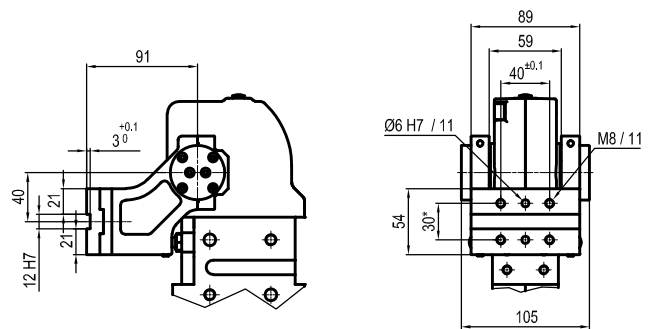
Electronic (optical)

- DF-K PNP M12
- DF-J NPN M12
- DF-Y PNP M12 White LED

P Horizontal
Mirror of "O" position



V Vertical 180°



Z Vertical
Mirror of "V" position

