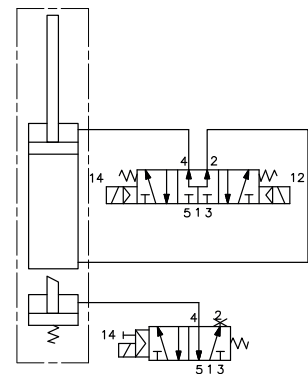


Pivot rotation in degrees	A
45°	357.5
60°	365.5
90°	383

Passive brake



UAGP063OK __ __ B0

6 PIVOT ROTATION

6

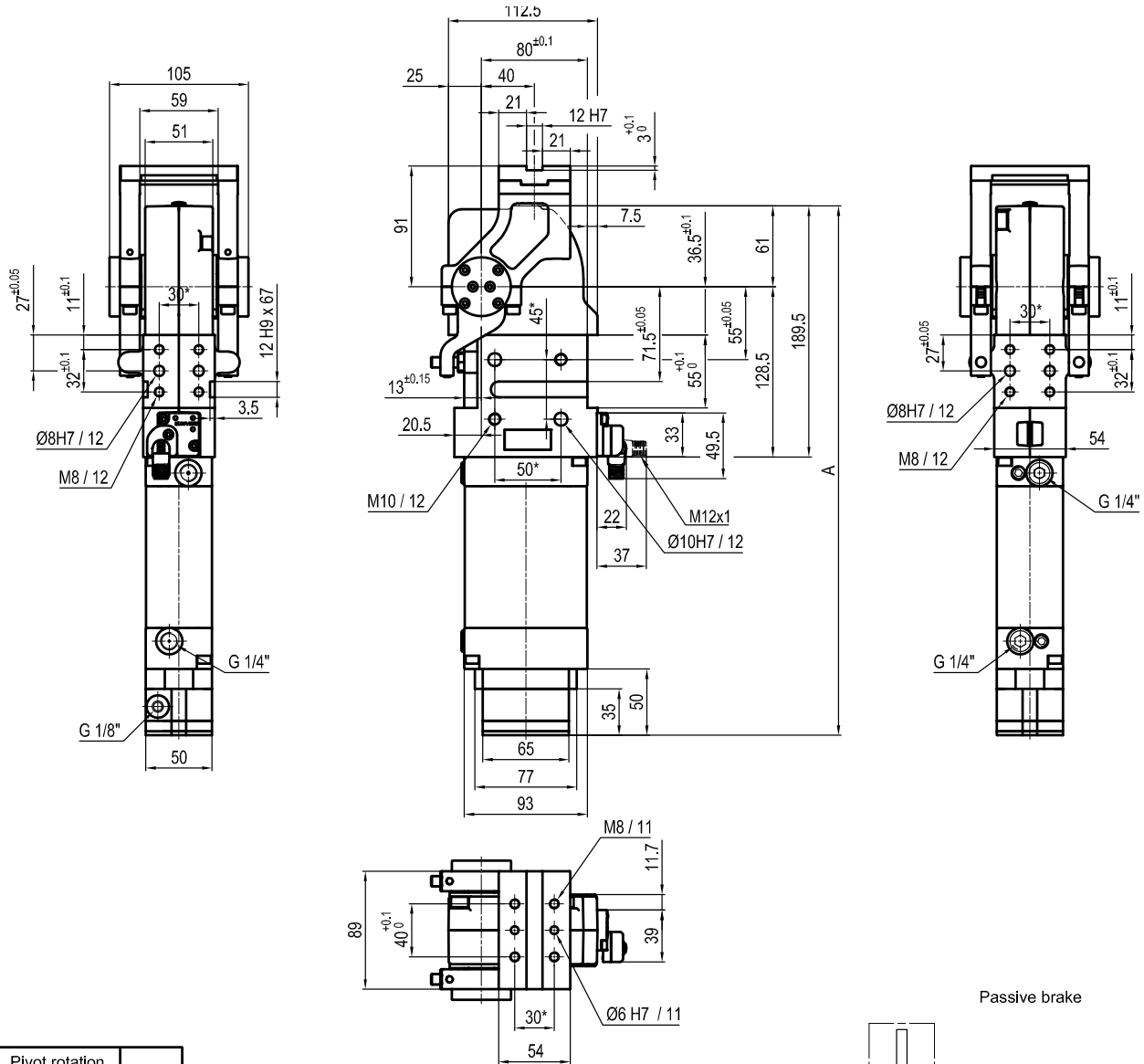
- 090 = 90°
- 060 = 60°
- 045 = 45°

Size	Holding moment	Max. torque at the rotary table 0,55 MPa	Weight
63	1500 Nm	16 Nm	5,5 Kg

Min./Max. operating pressure: **0,4 / 0,6 MPa**
 Operating temperature: **5° ÷ 45° C**
 Predetermine pivot rotation in degrees: **45°- 60°- 90°**
 Rotary table position: **Horizontal 90°**
 Electronic sensor with M12 swivel connector, from 0° to 90°
 Supply voltage: 10 ÷ 30 Vdc
 IP code: **IP 65**
 Pneumatic ports on both sides

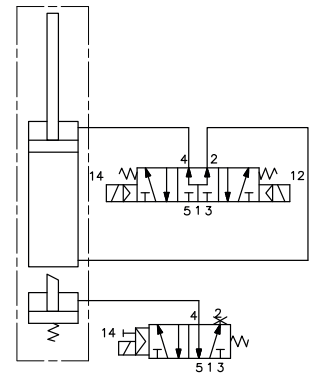
* : TOLERANCE BETWEEN DOWEL HOLES ± 0,02, BETWEEN SCREW HOLES ± 0,1

Subject to technical modifications without notice



Pivot rotation in degrees	A
45°	357.5
60°	365.5

Passive brake


UAGP063PK __ __ B0
6 PIVOT ROTATION
6

 060 = 60°
 045 = 45°

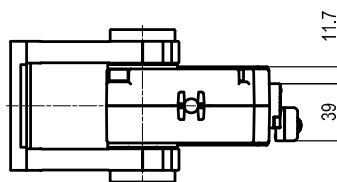
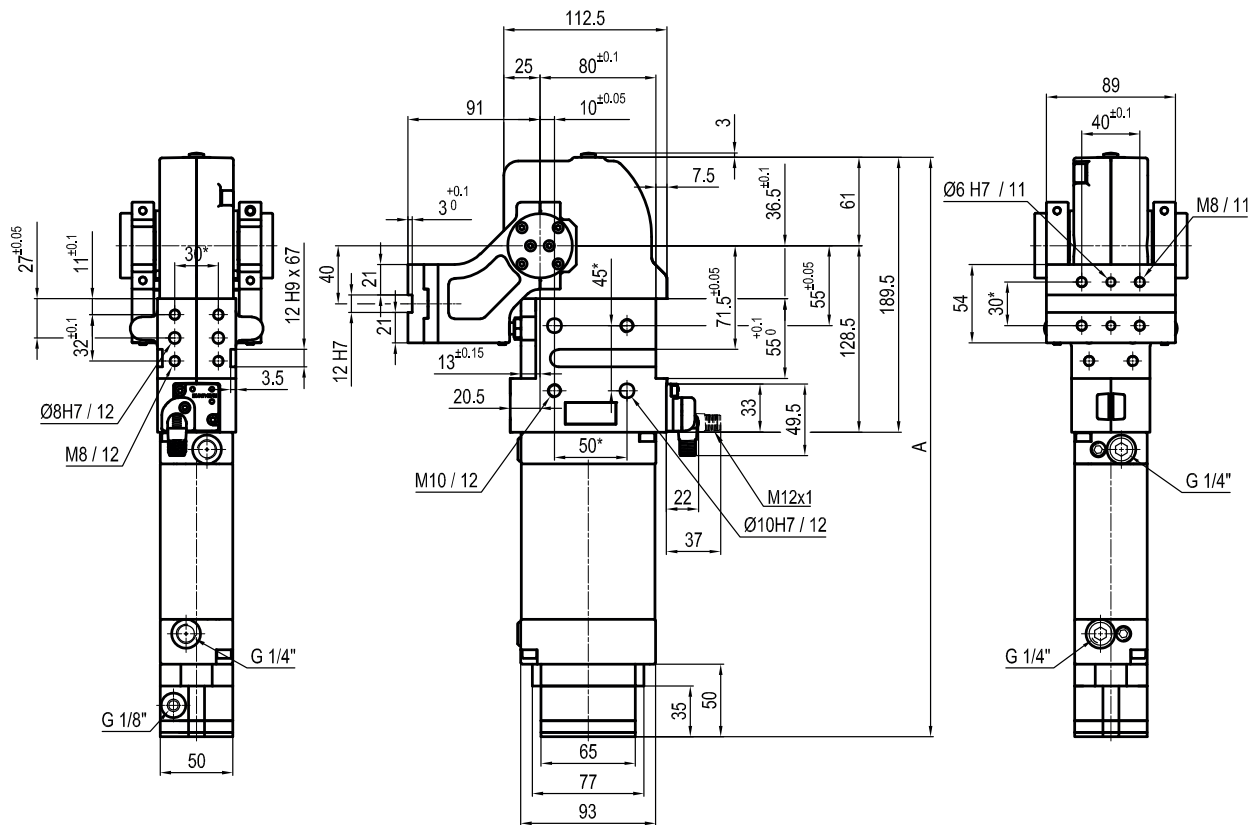
Size	Holding moment	Max. torque at the rotary table 0,55 MPa	Weight
63	1500 Nm	16 Nm	5,5 Kg

Min./Max. operating pressure: **0,4 / 0,6 MPa**
 Operating temperature: **5° ÷ 45° C**
 Predetermine pivot rotation in degrees: **45° - 60°**
 Rotary table position: **Horizontal mirror of O**
 Electronic sensor with M12 swivel connector, from 0° to 90°
 Supply voltage: 10 ÷ 30 Vdc
 IP code: **IP 65**
 Pneumatic ports on both sides

*: TOLERANCE BETWEEN DOWEL HOLES ± 0,02, BETWEEN SCREW HOLES ± 0,1

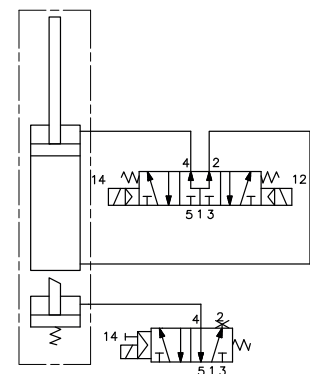
Subject to technical modifications without notice

Rev. 00 10.11.22



Pivot rotation in degrees	A
45°	357.5
60°	365.5
90°	383
120°	399.5

Passive brake


UAGP063VK __ __ B0
6 PIVOT ROTATION
6

 120 = 120°
 090 = 90°
 060 = 60°
 045 = 45°

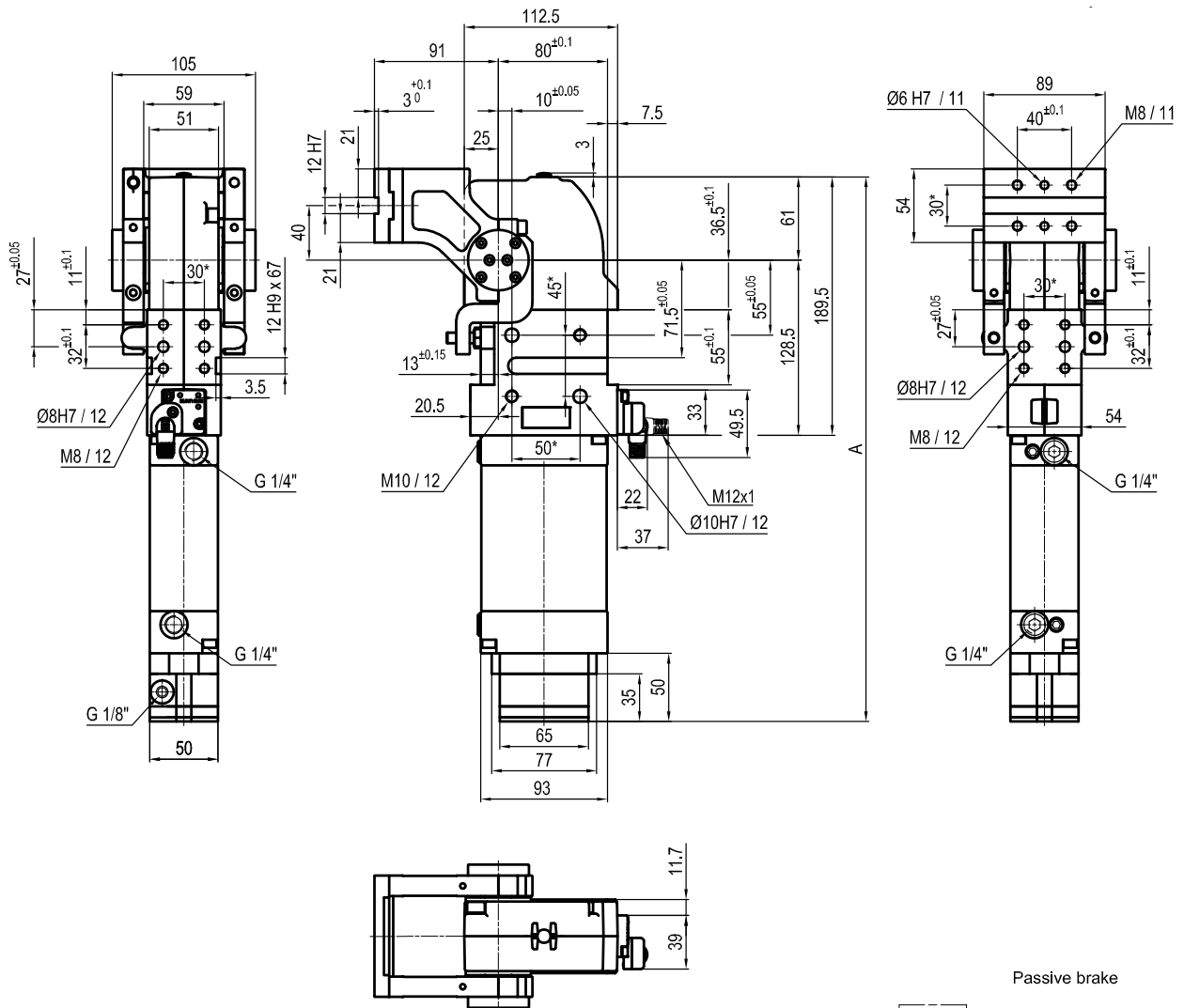
Size	Holding moment	Max. torque at the rotary table 0,55 MPa	Weight
63	1500 Nm	16 Nm	5,5 Kg

Min./Max. operating pressure: **0,4 / 0,6 MPa**
 Operating temperature: **5° ÷ 45° C**
 Predetermine pivot rotation in degrees: **45°- 60°-90°-120°**
 Rotary table position: **Vertical 180°**
 Electronic sensor with M12 swivel connector, from 0° to 90°
 Supply voltage: 10 ÷ 30 Vdc
 IP code: **IP 65**
 Pneumatic ports on both sides

*: TOLERANCE BETWEEN DOWEL HOLES ± 0,02, BETWEEN SCREW HOLES ± 0,1

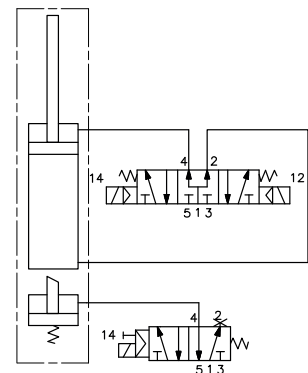
Subject to technical modifications without notice

Rev. 00 10.11.22



Pivot rotation in degrees	A
45°	357.5
60°	365.5
90°	383
120°	399.5

Passive brake


UAGP063ZK__B0
6 PIVOT ROTATION
6

 120 = 120°
 090 = 90°
 060 = 60°
 045 = 45°

Size	Holding moment	Max. torque at the rotary table 0,55 MPa	Weight
63	1500 Nm	16 Nm	5,5 Kg

Min./Max. operating pressure: **0,4 / 0,6 MPa**
 Operating temperature: **5° ÷ 45° C**
 Predetermine pivot rotation in degrees: **45°- 60°- 90°- 120°**
 Rotary table position: **Vertical mirror of V**
 Electronic sensor with M12 swivel connector, from 0° to 90°
 Supply voltage: 10 ÷ 30 Vdc
 IP code: **IP 65**
 Pneumatic ports on both sides

*: TOLERANCE BETWEEN DOWEL HOLES ± 0,02, BETWEEN SCREW HOLES ± 0,1

Subject to technical modifications without notice

Rev. 00 10.11.22