

UAGP 063

Pneumatic power pivot 16 Nm with brake

Pneumatic power pivot with brake typically used to rotate and dump fixtures and parts in a desired position.



- High repeatability
- Mechanical stops
- Double pneumatic cushioning
- Fixing ports on 4 sides
- Roller bearings to support heavy load
- Orientable table in 4 pre-set positions

CHARACTERISTICS

Operating temperature	5° ÷ 45° C
Min./Max. Operating pressure	0,4 / 0,6 MPa
Bore Ø	63 mm
Pivot rotation	45°/60°/ 90°/120°
Holding moment	1500 Nm
Max. torque at rotary table (0,55MPa)	16 Nm
Weight	5,5 kg
Pneumatic supply ports	G1/4
Body sensor	electronic (optical)
Brake sensor	electronic
Supply voltage	10 ÷ 30 Vdc
IP code	IP 65

CODIFICATION KEY

UAG | P | 063 | O | K | 090 | B | 0

1 2 3 4 5 6 7 8 9



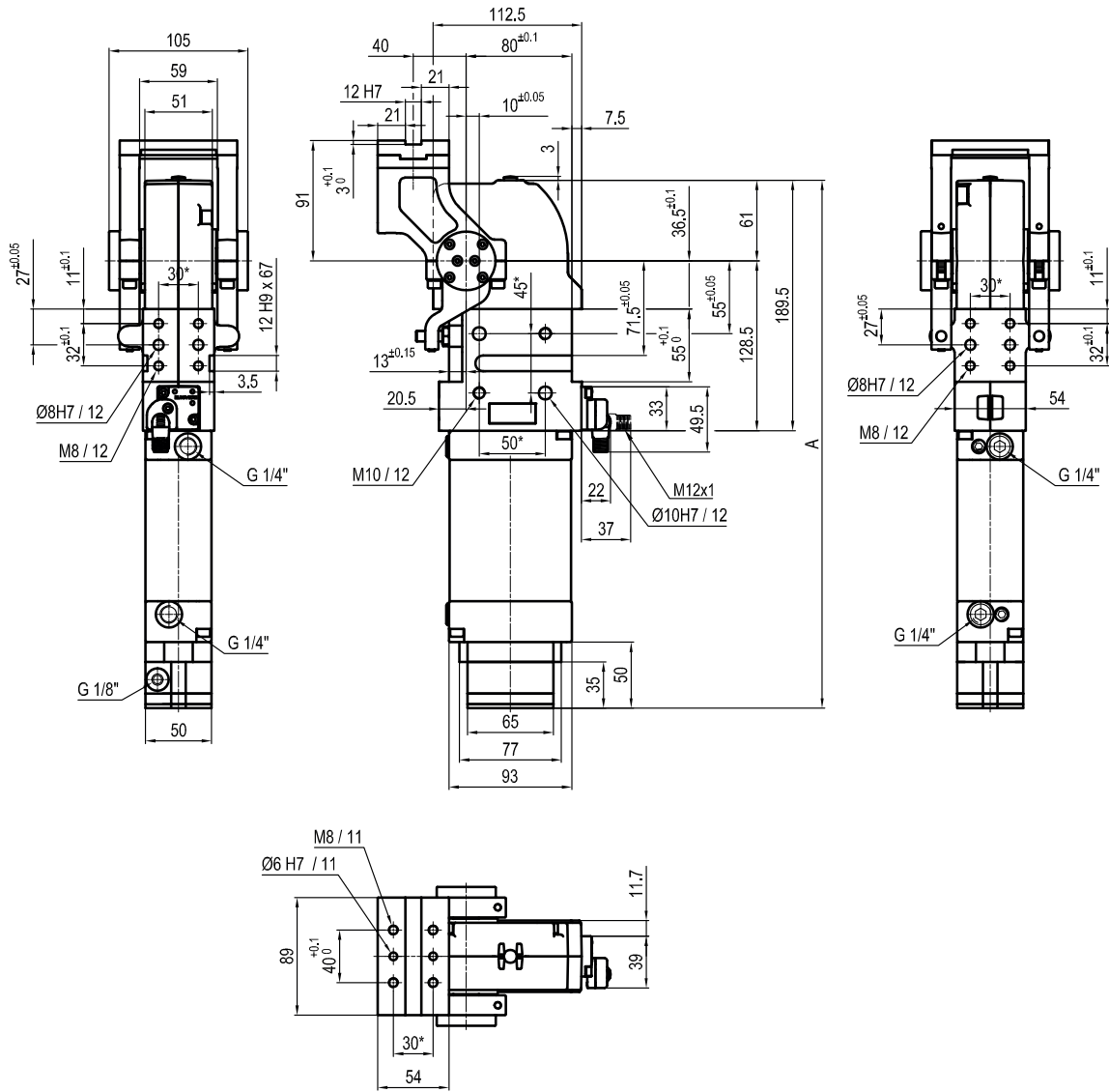
OPTICAL SENSOR



HIGH REPEATABILITY

1	SERIES UAG = UNICLAMP Power pivot	6	PIVOT ROTATION 120 = 120° 090 = 90° 060 = 60° 045 = 45°
2	VERSION P = Pneumatic	7	BRAKE SYSTEM B = With brake
3	SIZE 063 = 16 Nm Ø 63 mm	8	PRODUCT REVISION Assigned by UNIVER
4	TABLE POSITION O = Horizontal 90° * P = Horizontal mirror of "O" ** V = Vertical 180° Z = Vertical mirror of "V" *Max opening angle 90° **Max opening angle 60°	9	ATEX X = ATEX option See ATEX Catalogue for types and versions
5	SENSOR N = No sensor (with protection plate) K = Electronic sensor PNP, M12 (DF-K) Y = Electronic sensor PNP, M12 (DF-Y) white LED J = Electronic sensor NPN, M12 (DF-J)		

○ Horizontal 90°



*TOLERANCE BETWEEN DOWELS ± 0,02 BETWEEN SCREW HOLES ± 0,1

Pivot rotation (°)	A
45°	357.5
60°	565.5
90°	383
120°*	399.5

* ONLY FOR TABLE POSITION "V" AND "Z"

Sensors

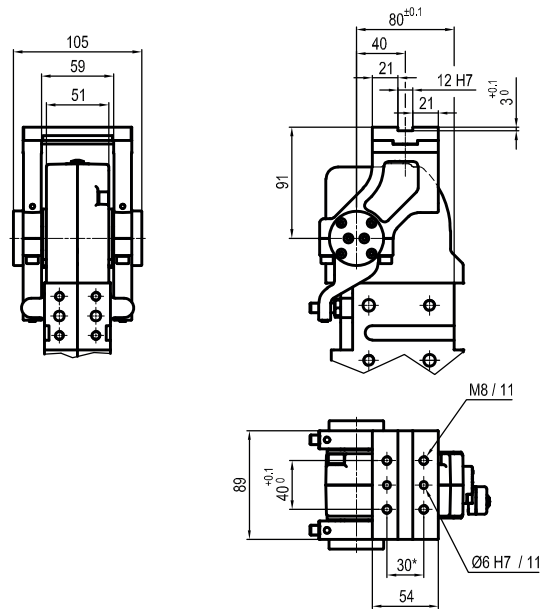
Body



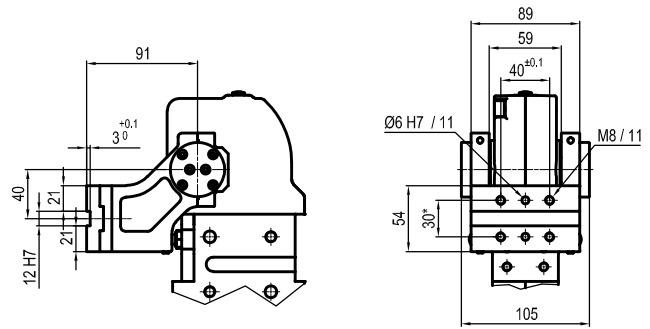
Electronic (optical)

- DF-K PNP M12
- DF-J NPN M12
- DF-Y PNP M12 White LED

P Horizontal
Mirror of "O" position



V Vertical 180°



Z Vertical
Mirror of "V" position

