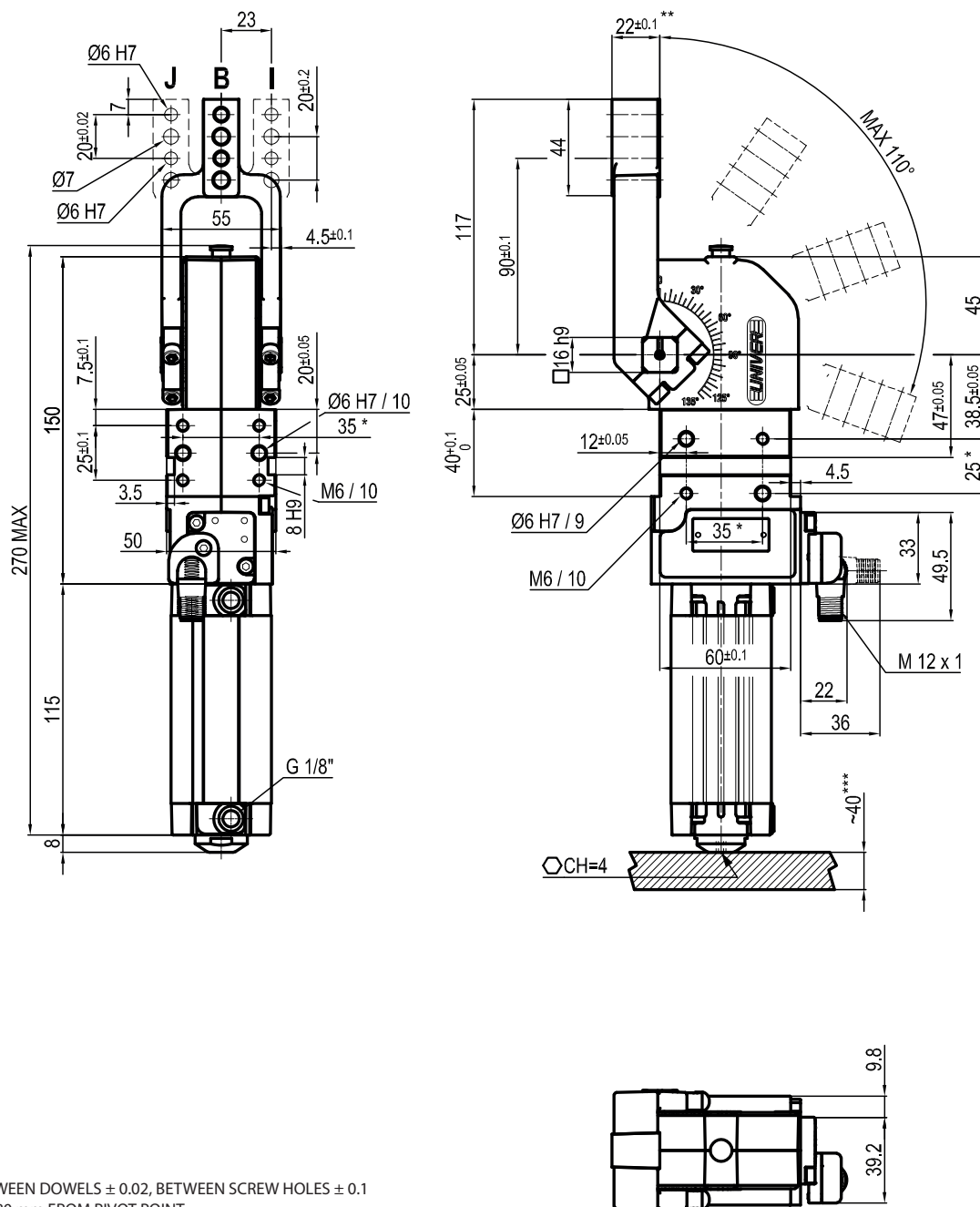


*: TOLERANCE BETWEEN DOWELS ± 0.02 , BETWEEN SCREW HOLES ± 0.1
 **: AREA TO ACCESS ANGLE ADJUSTMENT

Size \varnothing	Cylinder bore \varnothing	Holding moment	Clamping moment (0,5 MPa)	Weight (clamping arm not included)
40 mm	32 mm	600 Nm	125 Nm	1,4 Kg

Min./Max. operating pressure: **0,4 / 0,6 MPa**
 Operating temperature: **5° ÷ 45° C**
 Opening angle: **adjustable**
 Without arm
 Electronic sensor with M12 swivel connector, from 0° to 90°
 Supply voltage: **10 ÷ 30 Vdc**
 IP code: **IP 65**

Subject to technical modifications without notice



* : TOLERANCE BETWEEN DOWELS ± 0.02, BETWEEN SCREW HOLES ± 0.1

** : TOLERANCE AT 80 mm FROM PIVOT POINT

*** : AREA TO ACCESS ANGLE ADJUSTMENT

UABP400 __ K0
6 ARM STYLE

7 ARM TYPE

6 7

B = Central
I = Right
J = Left

A = Aluminium
S = Steel

Size Ø	Cylinder bore Ø	Holding moment	Clamping moment (0,5 MPa)	Weight (clamping arm not included)
40 mm	32 mm	600 Nm	125 Nm	1,4 Kg

Min./Max. operating pressure: **0,4 / 0,6 MPa**

Operating temperature: **5° ÷ 45° C**

Opening angle: **adjustable from 0° to 110°**

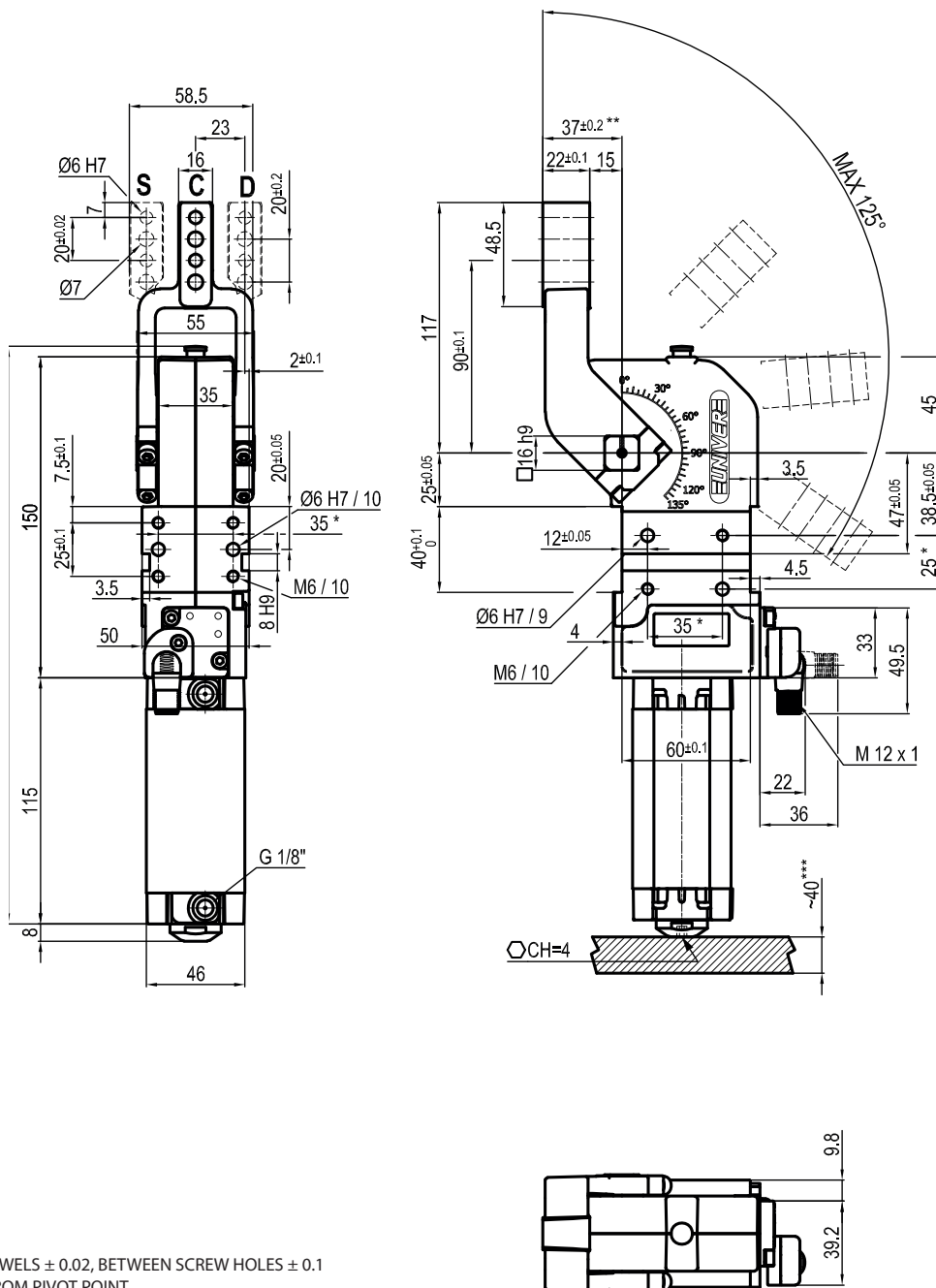
Arm position: **180°**

Electronic sensor with M12 swivel connector, from 0° to 90°

Supply voltage: **10 ÷ 30 Vdc**

IP code: **IP 65**

Subject to technical modifications without notice



* : TOLERANCE BETWEEN DOWELS ± 0.02 , BETWEEN SCREW HOLES ± 0.1

** : TOLERANCE AT 80 mm FROM PIVOT POINT

** : AREA TO ACCESS ANGLE ADJUSTMENT

UABP400 __ K0
6 ARM STYLE

7 ARM TYPE

6 7

C = Central
D = Right
S = Left

A = Aluminium
S = Steel

Size \varnothing	Cylinder bore \varnothing	Holding moment	Clamping moment (0,5 MPa)	Weight (clamping arm not included)
40 mm	32 mm	600 Nm	125 Nm	1,4 Kg

Min./Max. operating pressure: **0,4 / 0,6 MPa**

Operating temperature: **5° ÷ 45° C**

Opening angle: **adjustable from 0° to 125°**

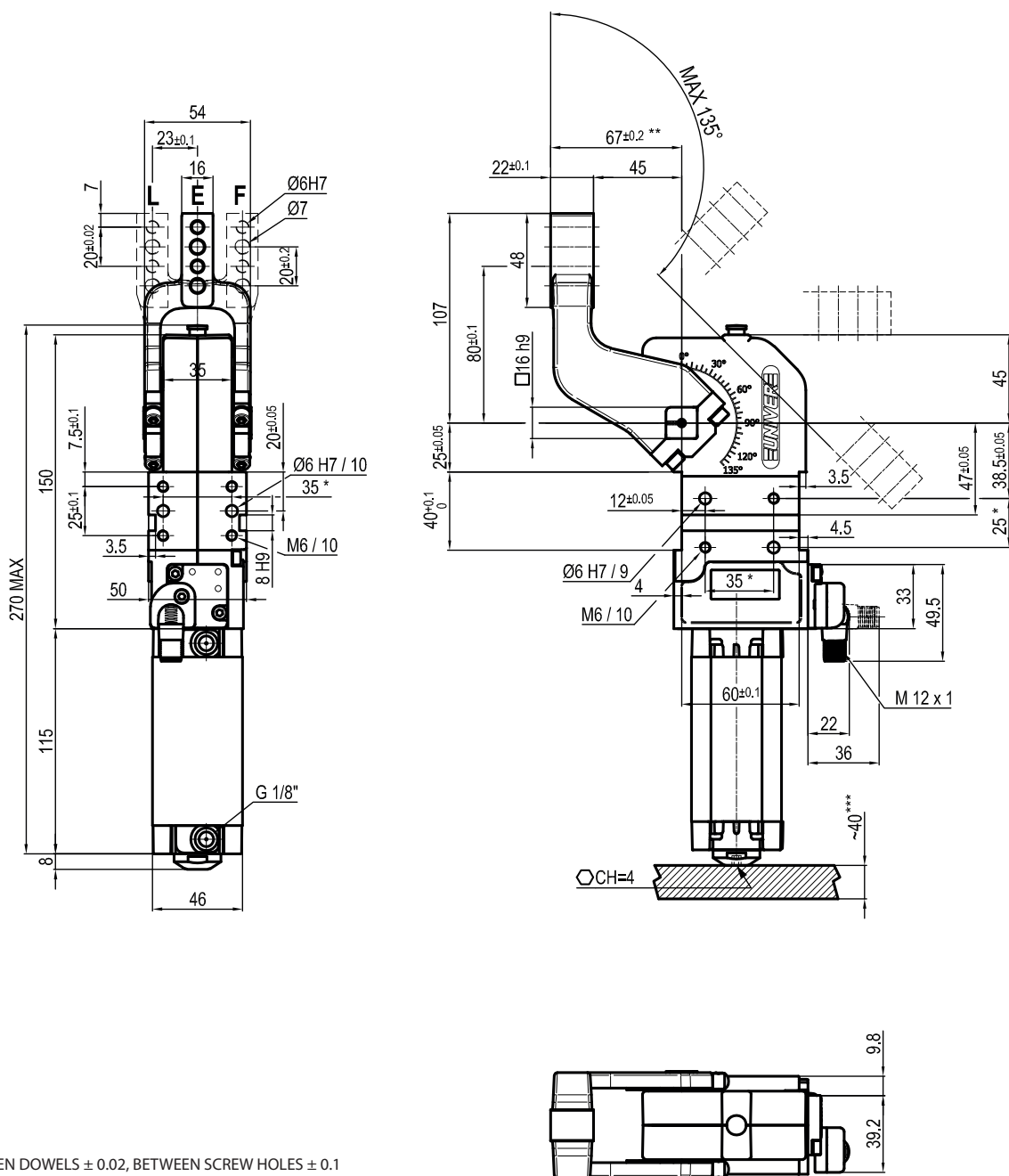
Arm position: **180°**

Electronic sensor with M12 swivel connector, from 0° to 90°

Supply voltage: **10 ÷ 30 Vdc**

IP code: **IP 65**

Subject to technical modifications without notice



* : TOLERANCE BETWEEN DOWELS ± 0.02 , BETWEEN SCREW HOLES ± 0.1
 ** : TOLERANCE AT 80 mm FROM PIVOT POINT
 *** : AREA TO ACCESS ANGLE ADJUSTMENT

UABP400 __ K0
6 ARM STYLE

7 ARM TYPE

6 7

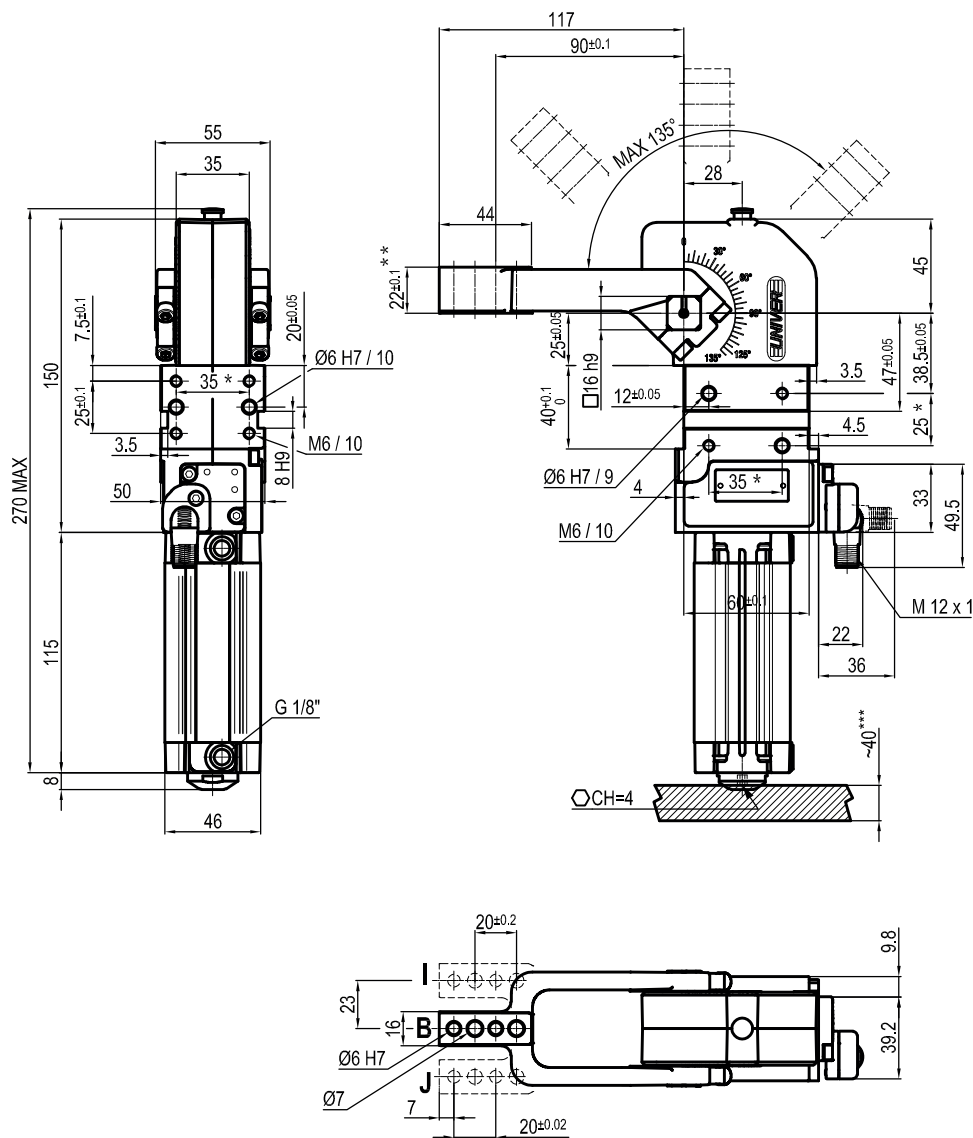
 E = Central
 F = Right
 L = Left

 A = Aluminium
 S = Steel

Size \varnothing	Cylinder bore \varnothing	Holding moment	Clamping moment (0,5 MPa)	Weight (clamping arm not included)
40 mm	32 mm	600 Nm	125 Nm	1,4 Kg

Min./Max. operating pressure: **0,4 / 0,6 MPa**
 Operating temperature: **5° ÷ 45° C**
 Opening angle: **adjustable from 0° to 135°**
 Arm position: **180°**
 Electronic sensor with M12 swivel connector, from 0° to 90°
 Supply voltage: **10 ÷ 30 Vdc**
 IP code: **IP 65**

Subject to technical modifications without notice



* : TOLERANCE BETWEEN DOWELS ± 0.02, BETWEEN SCREW HOLES ± 0.1

** : TOLERANCE AT 80 mm FROM PIVOT POINT

*** : AREA TO ACCESS ANGLE ADJUSTMENT

UABP40V __ K0

6 7

6 ARM STYLE

B = Central
I = Right
J = Left

7 ARM TYPE

A = Aluminium
S = Steel

Size Ø	Cylinder bore Ø	Holding moment	Clamping moment (0,5 MPa)	Weight (clamping arm not included)
40 mm	32 mm	600 Nm	125 Nm	1,4 Kg

Min./Max. operating pressure: **0,4 / 0,6 MPa**

Operating temperature: **5° ÷ 45° C**

Opening angle: **adjustable from 0° to 135°**

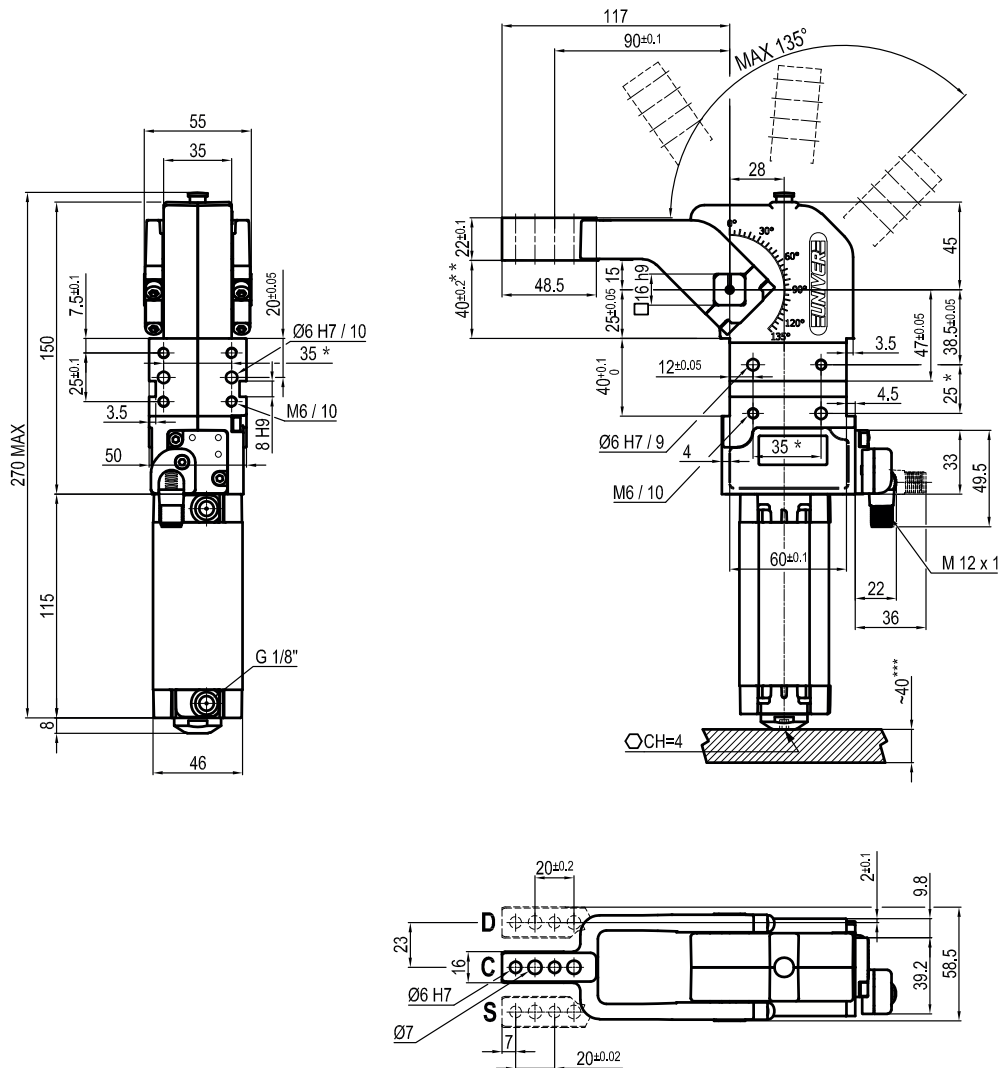
Arm position: **90°**

Electronic sensor with M12 swivel connector, from 0° to 90°

Supply voltage: **10 ÷ 30 Vdc**

IP code: **IP 65**

Subject to technical modifications without notice



* : TOLERANCE BETWEEN DOWELS ± 0.02 , BETWEEN SCREW HOLES ± 0.1

** : TOLERANCE AT 80 mm FROM PIVOT POINT

***: AREA TO ACCESS ANGLE ADJUSTMENT

UABP40V __ K0

6 7

6 ARM STYLE

C = Central
D = Right
S = Left

7 ARM TYPE

A = Aluminium
S = Steel

Size \varnothing	Cylinder bore \varnothing	Holding moment	Clamping moment (0,5 MPa)	Weight (clamping arm not included)
40 mm	32 mm	600 Nm	125 Nm	1,4 Kg

Min./Max. operating pressure: **0,4 / 0,6 MPa**

Operating temperature: **5° ÷ 45° C**

Opening angle: **adjustable from 0° to 135°**

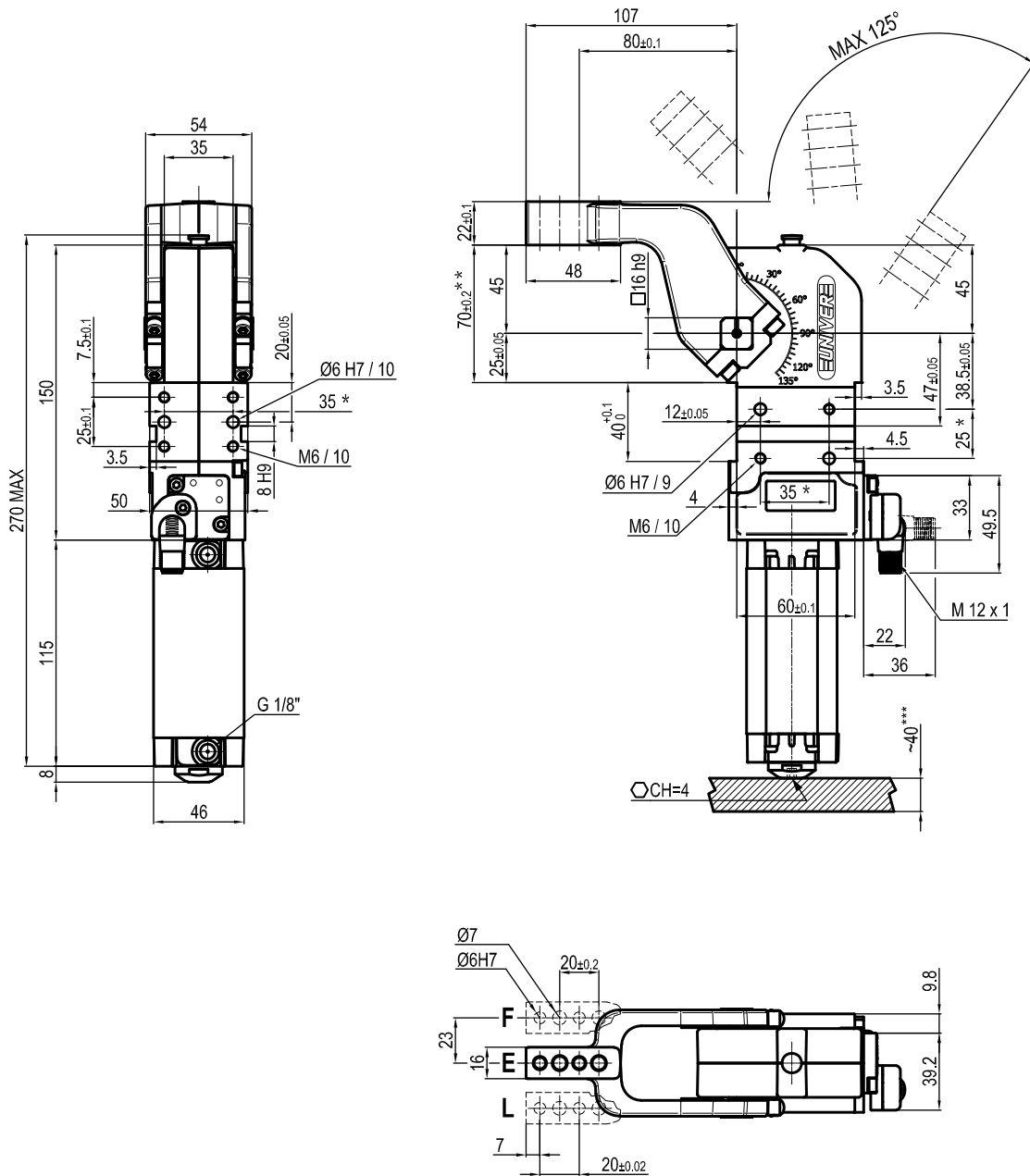
Arm position: **90°**

Electronic sensor with M12 swivel connector, from 0° to 90°

Supply voltage: **10 ÷ 30 Vdc**

IP code: **IP 65**

Subject to technical modifications without notice



* : TOLERANCE BETWEEN DOWELS ± 0.02 , BETWEEN SCREW HOLES ± 0.1

** : TOLERANCE AT 80 mm FROM PIVOT POINT

*** : AREA TO ACCESS ANGLE ADJUSTMENT

UABP40V __ _ K0
6 ARM STYLE

7 ARM TYPE

6 7

E = Central
F = Right
L = Left

A = Aluminium
S = Steel

Size \varnothing	Cylinder bore \varnothing	Holding moment	Clamping moment (0,5 MPa)	Weight (clamping arm not included)
40 mm	32 mm	600 Nm	125 Nm	1,4 Kg

Min./Max. operating pressure: **0,4 / 0,6 MPa**

Operating temperature: **5° ÷ 45° C**

Opening angle: **adjustable from 0° to 125°**

Arm position: **90°**

Electronic sensor with M12 swivel connector, from 0° to 90°

Supply voltage: **10 ÷ 30 Vdc**

IP code: **IP 65**

Subject to technical modifications without notice