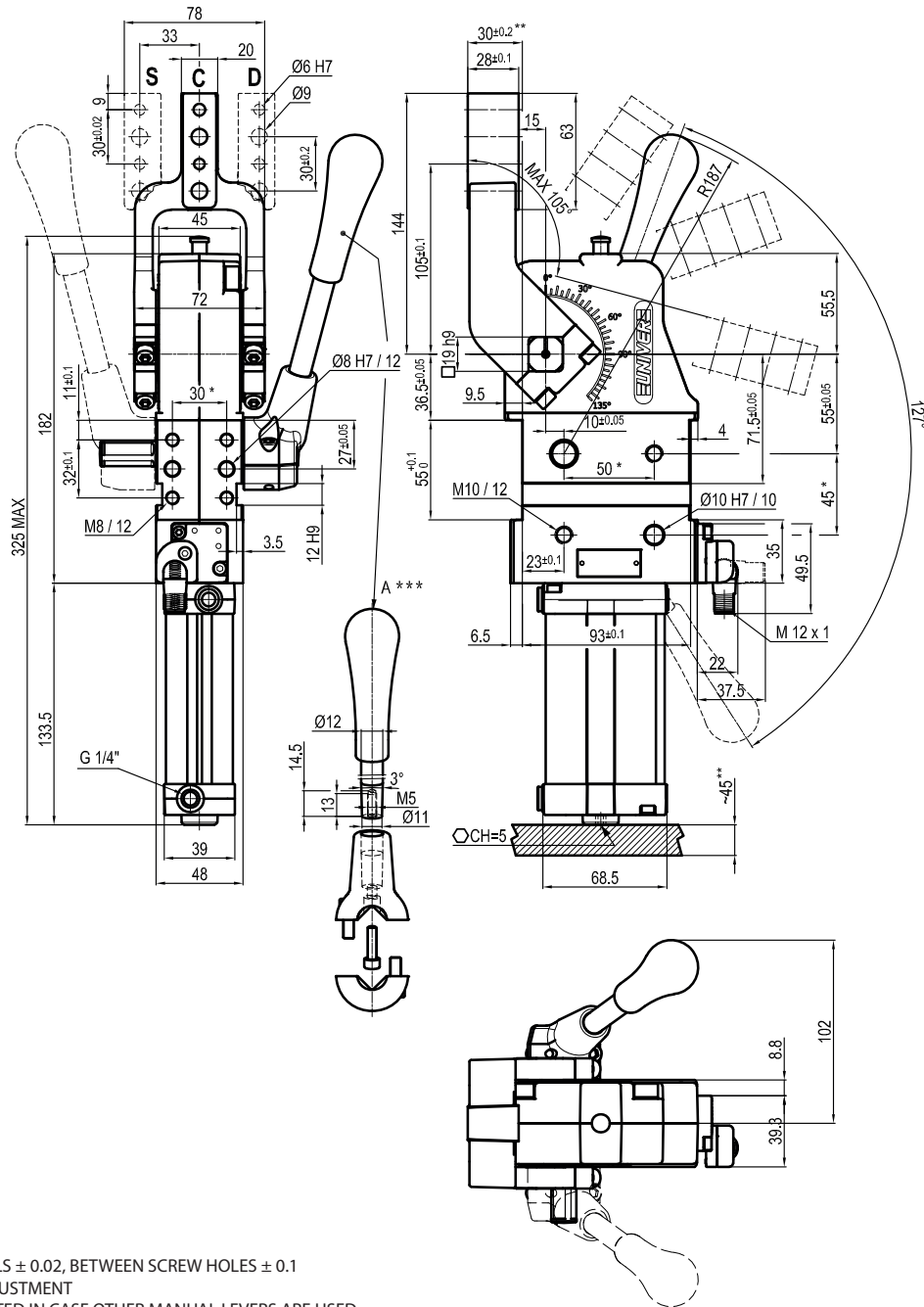


* : TOLERANCE BETWEEN DOWELS ± 0.02 , BETWEEN SCREW HOLES ± 0.1
 ** : AREA TO ACCESS ANGLE ADJUSTMENT
 *** : DIMENSIONS TO BE RESPECTED IN CASE OTHER MANUAL LEVERS ARE USED

Size \varnothing	Cylinder bore \varnothing	Holding moment	Clamping moment (0,5 MPa)	Weight (clamping arm not included)
50 mm	40 mm	1250 Nm	170 Nm	3 Kg

Min./Max. operating pressure: **0,4 / 0,6 MPa**
 Operating temperature: **5° ÷ 45° C**
 Opening angle: **adjustable**
 Without arm
 Electronic sensor with M12 swivel connector, from 0° to 90°
 Supply voltage: **10 ÷ 30 Vdc**
 IP code: **IP 65**
 Pneumatic ports on both sides



* : TOLERANCE BETWEEN DOWELS ± 0.02 , BETWEEN SCREW HOLES ± 0.1

** : AREA TO ACCESS ANGLE ADJUSTMENT

*** : DIMENSIONS TO BE RESPECTED IN CASE OTHER MANUAL LEVERS ARE USED

UABM500 __ K0

6 ARM STYLE

7 ARM TYPE

6 7

C = Central
D = Right
S = Left

A = Aluminium
S = Steel

Size \varnothing	Cylinder bore \varnothing	Holding moment	Clamping moment (0,5 MPa)	Weight (clamping arm not included)
50 mm	40 mm	1250 Nm	170 Nm	3 Kg

Min./Max. operating pressure: **0,4 / 0,6 MPa**

Operating temperature: **5° ÷ 45° C**

Opening angle: **adjustable from 0° to 135°**

Arm position: **180°**

With hand lever

Electronic sensor with M12 swivel connector, from 0° to 90°

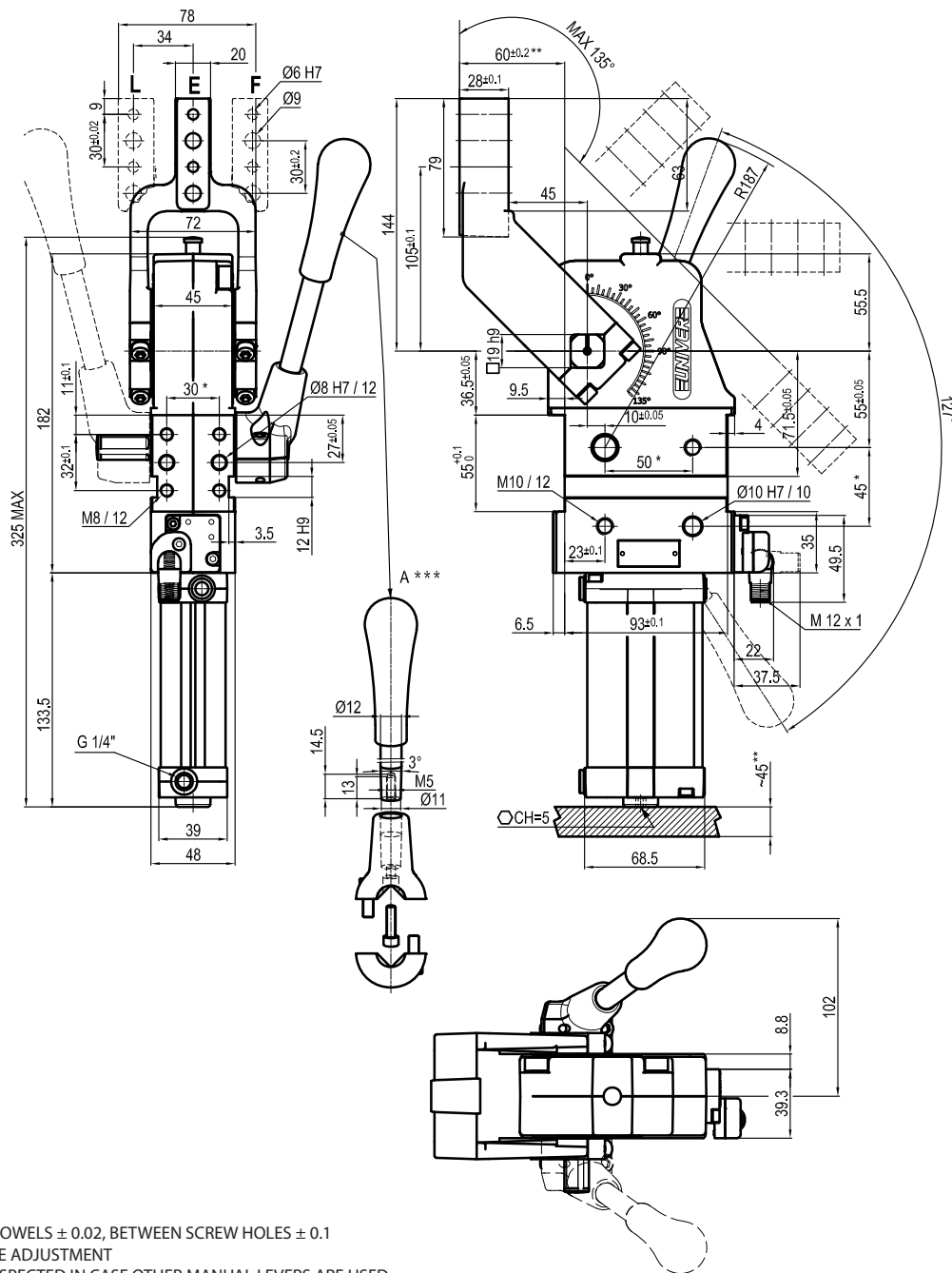
Supply voltage: **10 ÷ 30 Vdc**

IP code: **IP 65**

Pneumatic ports on both sides

Subject to technical modifications without notice

Rev. 01 27.01.22



* : TOLERANCE BETWEEN DOWELS ± 0.02 , BETWEEN SCREW HOLES ± 0.1

** : AREA TO ACCESS ANGLE ADJUSTMENT

*** : DIMENSIONS TO BE RESPECTED IN CASE OTHER MANUAL LEVERS ARE USED

UABM500 __ K0

6 ARM STYLE

7 ARM TYPE

6 7

E = Central
F = Right
L = Left

A = Aluminium
S = Steel

Size \varnothing	Cylinder bore \varnothing	Holding moment	Clamping moment (0,5 MPa)	Weight (clamping arm not included)
50 mm	40 mm	1250 Nm	170 Nm	3 Kg

Min./Max. operating pressure: **0,4 / 0,6 MPa**

Operating temperature: **5° ÷ 45° C**

Opening angle: **adjustable from 0° to 135°**

Arm position: **180°**

With hand lever

Electronic sensor with M12 swivel connector, from 0° to 90°

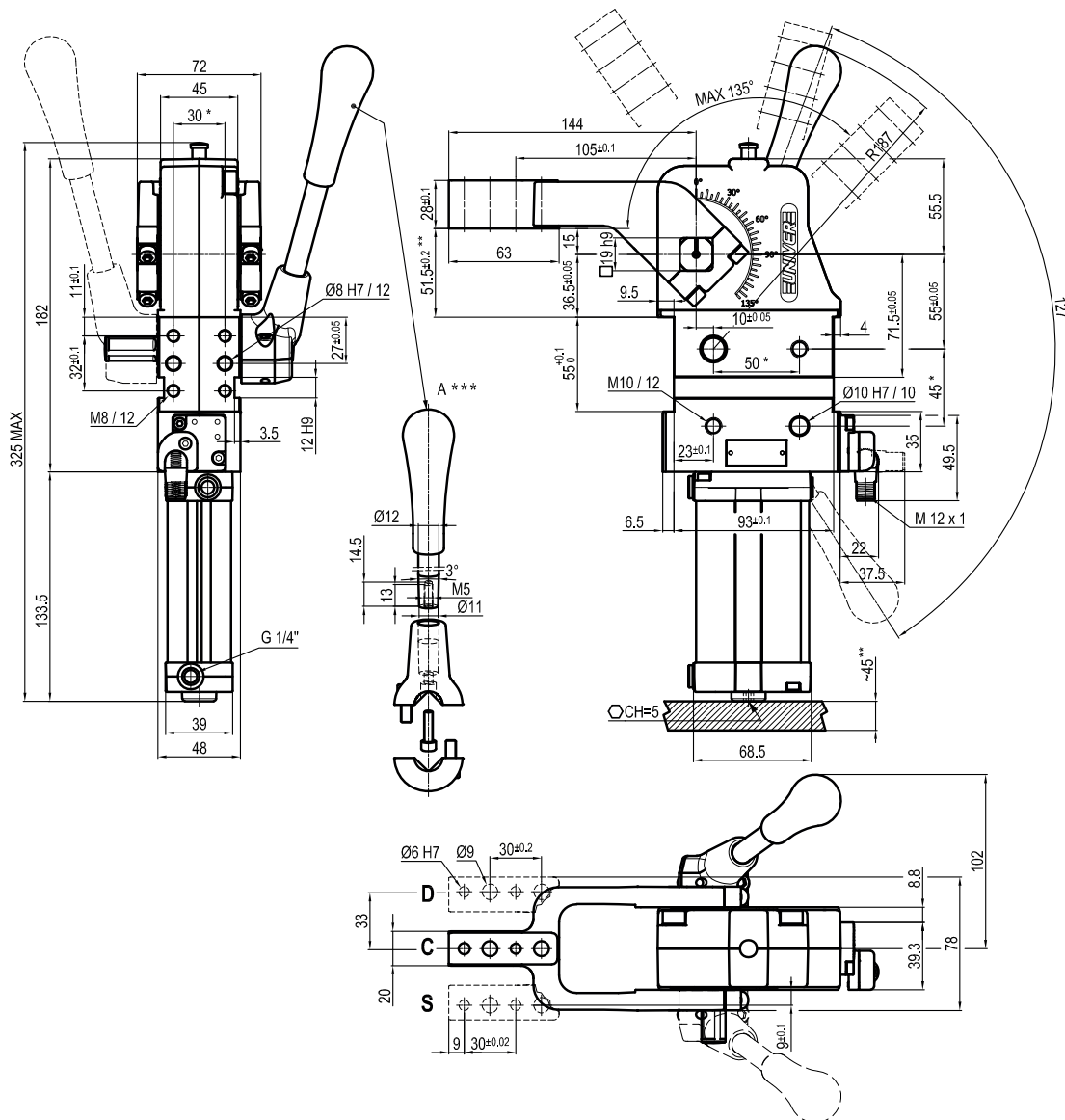
Supply voltage: **10 ÷ 30 Vdc**

IP code: **IP 65**

Pneumatic ports on both sides

Subject to technical modifications without notice

Rev. 01 27.01.22



* : TOLERANCE BETWEEN DOWELS ± 0.02 , BETWEEN SCREW HOLES ± 0.1

** : AREA TO ACCESS ANGLE ADJUSTMENT

*** : DIMENSIONS TO BE RESPECTED IN CASE OTHER MANUAL LEVERS ARE USED

UABM50V __ K0

6 7

6 ARM STYLE

C = Central
D = Right
S = Left

7 ARM TYPE

A = Aluminium
S = Steel

Size \varnothing	Cylinder bore \varnothing	Holding moment	Clamping moment (0,5 MPa)	Weight (clamping arm not included)
50 mm	40 mm	1250 Nm	170 Nm	3 Kg

Min./Max. operating pressure: **0,4 / 0,6 MPa**

Operating temperature: **5° ÷ 45° C**

Opening angle: **adjustable from 0° to 135°**

Arm position: **90°**

With hand lever

Electronic sensor with M12 swivel connector, from 0° to 90°

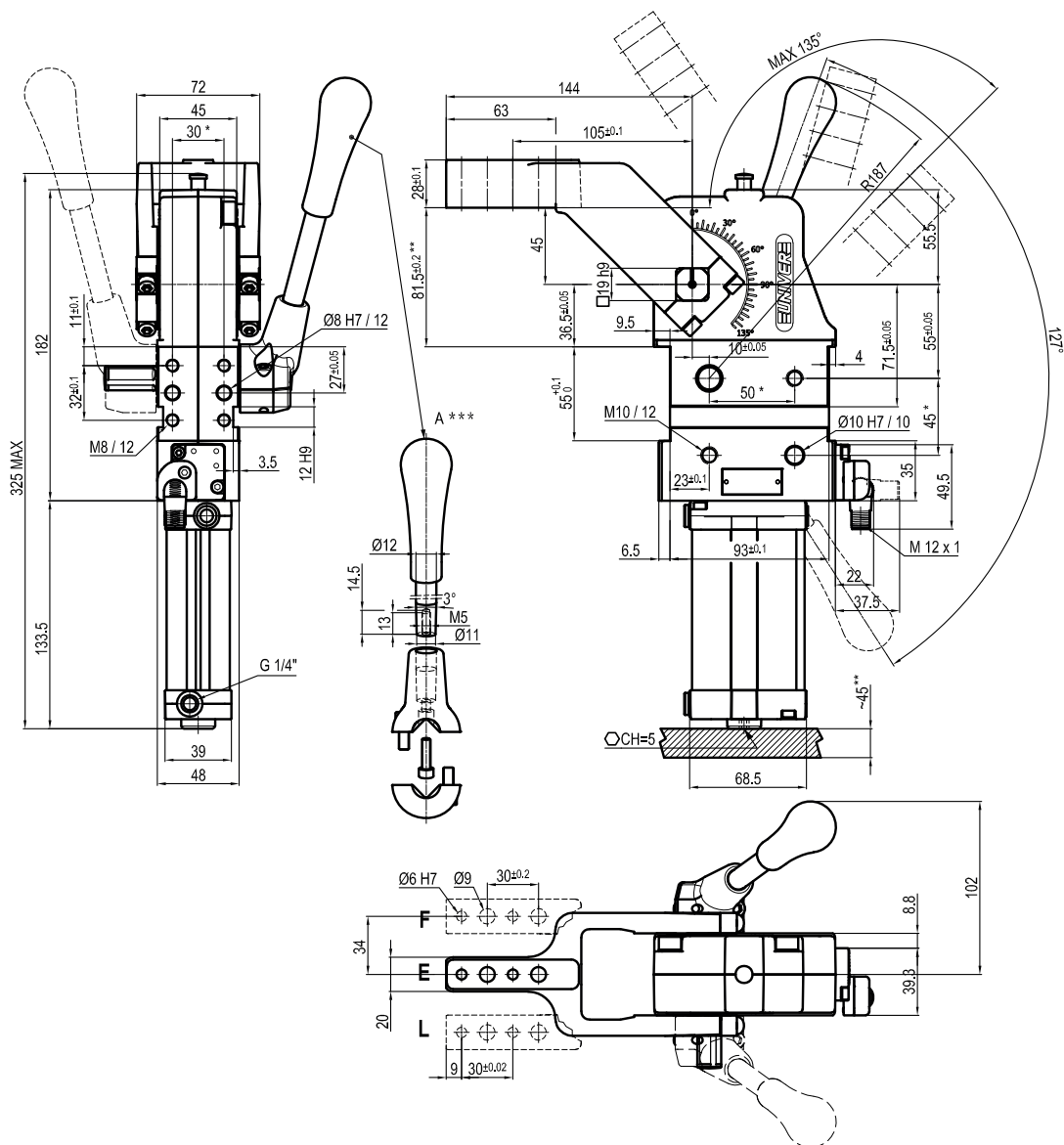
Supply voltage: **10 ÷ 30 Vdc**

IP code: **IP 65**

Pneumatic ports on both sides

Subject to technical modifications without notice

Rev. 01 27.01.22



* : TOLERANCE BETWEEN DOWELS ± 0.02 , BETWEEN SCREW HOLES ± 0.1

** : AREA TO ACCESS ANGLE ADJUSTMENT

*** : DIMENSIONS TO BE RESPECTED IN CASE OTHER MANUAL LEVERS ARE USED

UABM50V __ K0

6 ARM STYLE

7 ARM TYPE

6 7

E = Central
F = Right
L = Left

A = Aluminium
S = Steel

Size \varnothing	Cylinder bore \varnothing	Holding moment	Clamping moment (0,5 MPa)	Weight (clamping arm not included)
50 mm	40 mm	1250 Nm	170 Nm	3 Kg

Min./Max. operating pressure: **0,4 / 0,6 MPa**

Operating temperature: **5° ÷ 45° C**

Opening angle: **adjustable from 0° to 135°**

Arm position: **90°**

With hand lever

Electronic sensor with M12 swivel connector, from 0° to 90°

Supply voltage: **10 ÷ 30 Vdc**

IP code: **IP 65**

Pneumatic ports on both sides

Subject to technical modifications without notice

Rev. 01 27.01.22