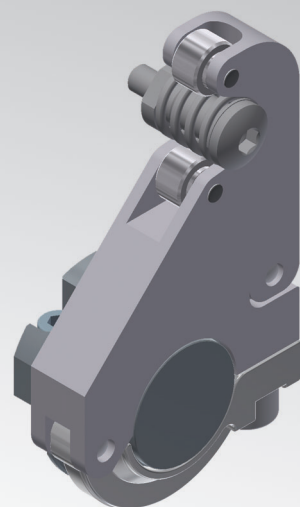


UBK46

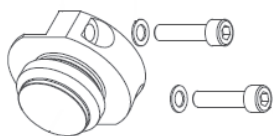
Self-holding system for open position



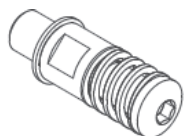
UBK46P_____

Self holding kit mounting instructions

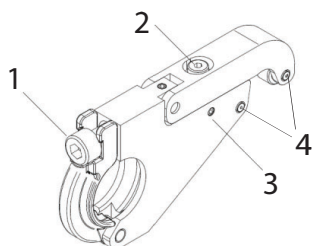
Components



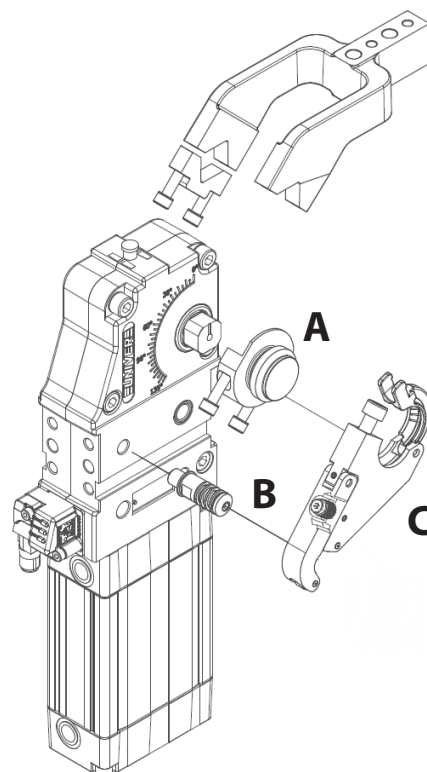
Group (A)
Dowel + screws + washers



Group (B)
Pin + washers



Gruppo (C)
Self holding



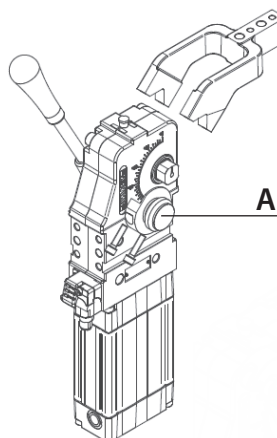
Sequence

Mount the arm using the fixing block (A).

Tighten the screws with an allen wrench

(see suitable torque below)

Screw	Tightening torque	
	Min [Nm]	Max [Nm]
M5	9	11
M6	16	18
M8	25	30
M10	33	35



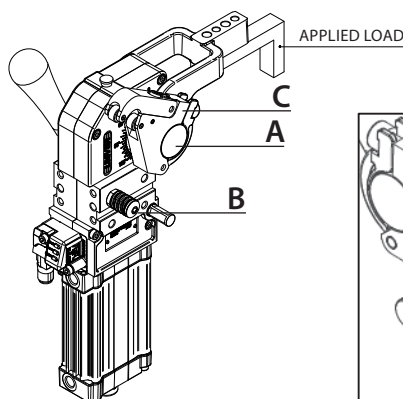
Mount self-holding group (C) on the fixing block (A)

without completely loose the nut (1).

Screw in the pin group (B) on the housing

(see suitable torque below)

Screw	Tightening torque
M6	8 Nm
M10	25Nm
M12	45Nm



Adjust the opening angle of the power clamp unit to the desired position.

In open position:

Lock the self-holding system (C) to the pin (B)

Tighten the tightening screw (1) while keeping the

self-holding system (C) slightly up and the rollers (4)

leaning onto the pin group spring (B)

- torque wrench, 25 Nm

Firmly lock the self-holding system (C) over the pin (B)

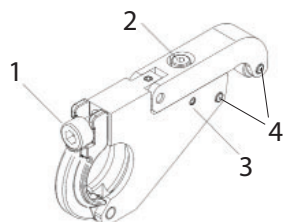
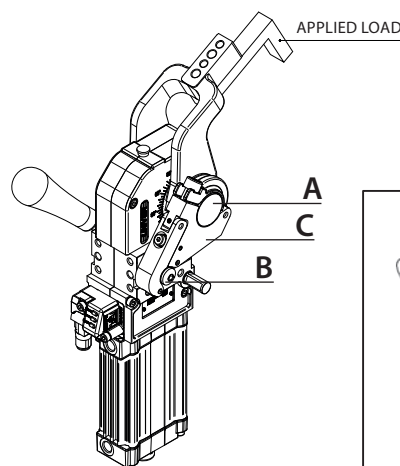
Adjust the holding force screw (2) until the applied load is

held properly.

- Allen wrench N°3

Tighten the safety nut (3)

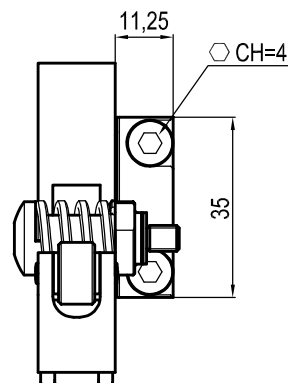
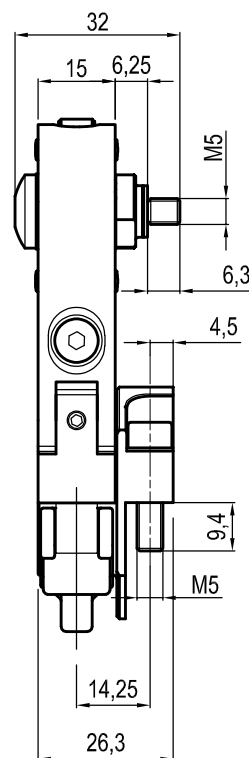
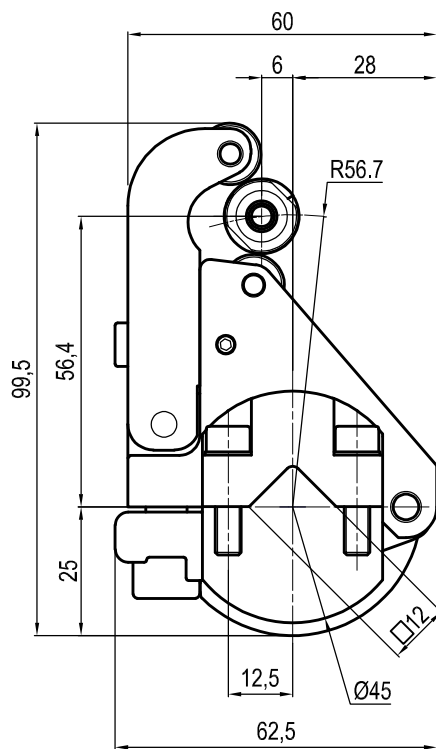
- Allen wrench N°2



PERIODIC VERIFICATION:

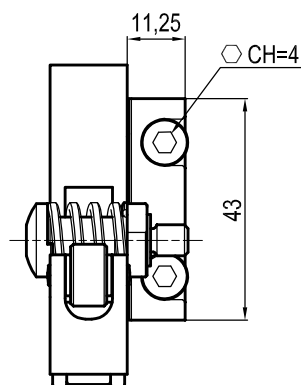
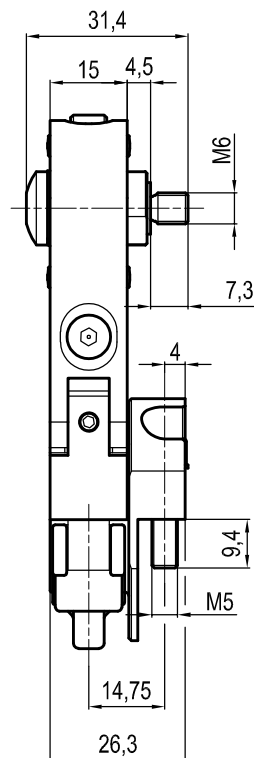
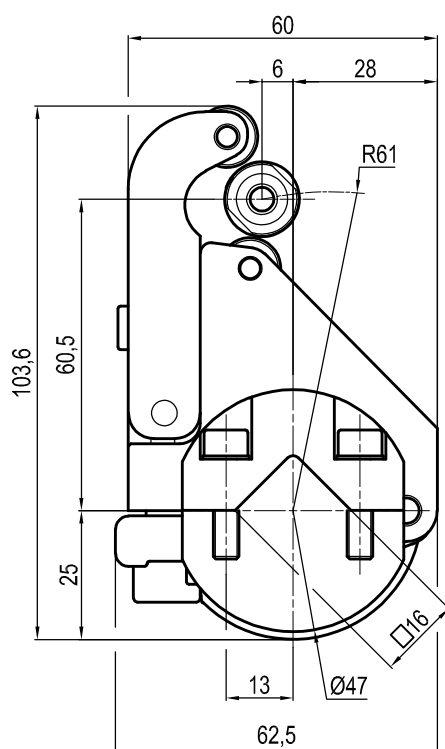
check that the applied load is still held properly. If not, adjust the holding force screw (2) again or replace the pin group (B) + washer (pin group is suggested to be kept on stock as spare part since it is subject to wear).

□12 mm self holding



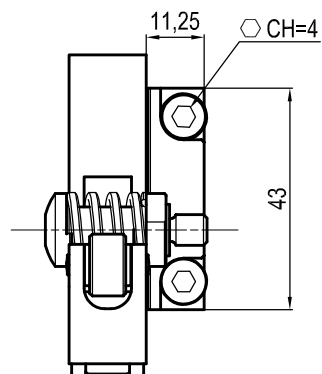
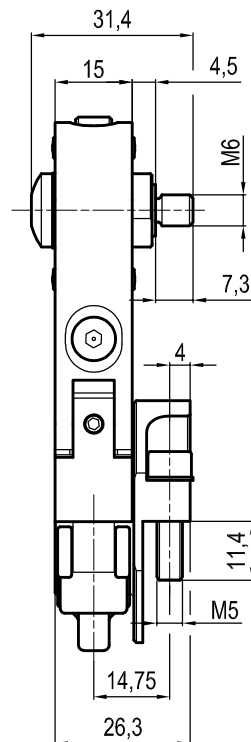
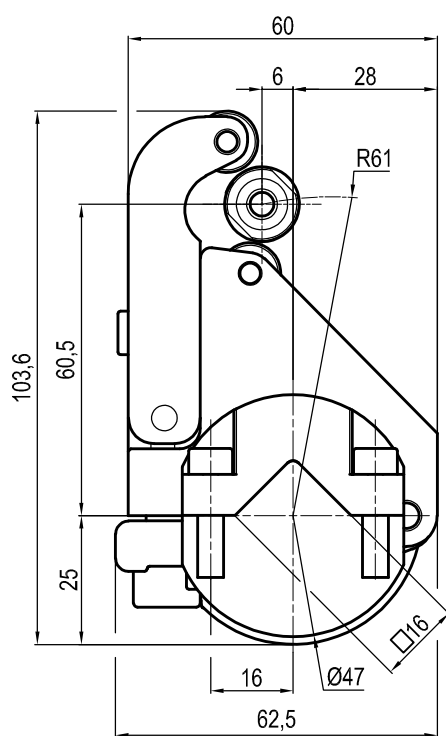
Clamp size	Material	Weight
32	Aluminium / Steel	0.275 Kg

□16 mm self holding



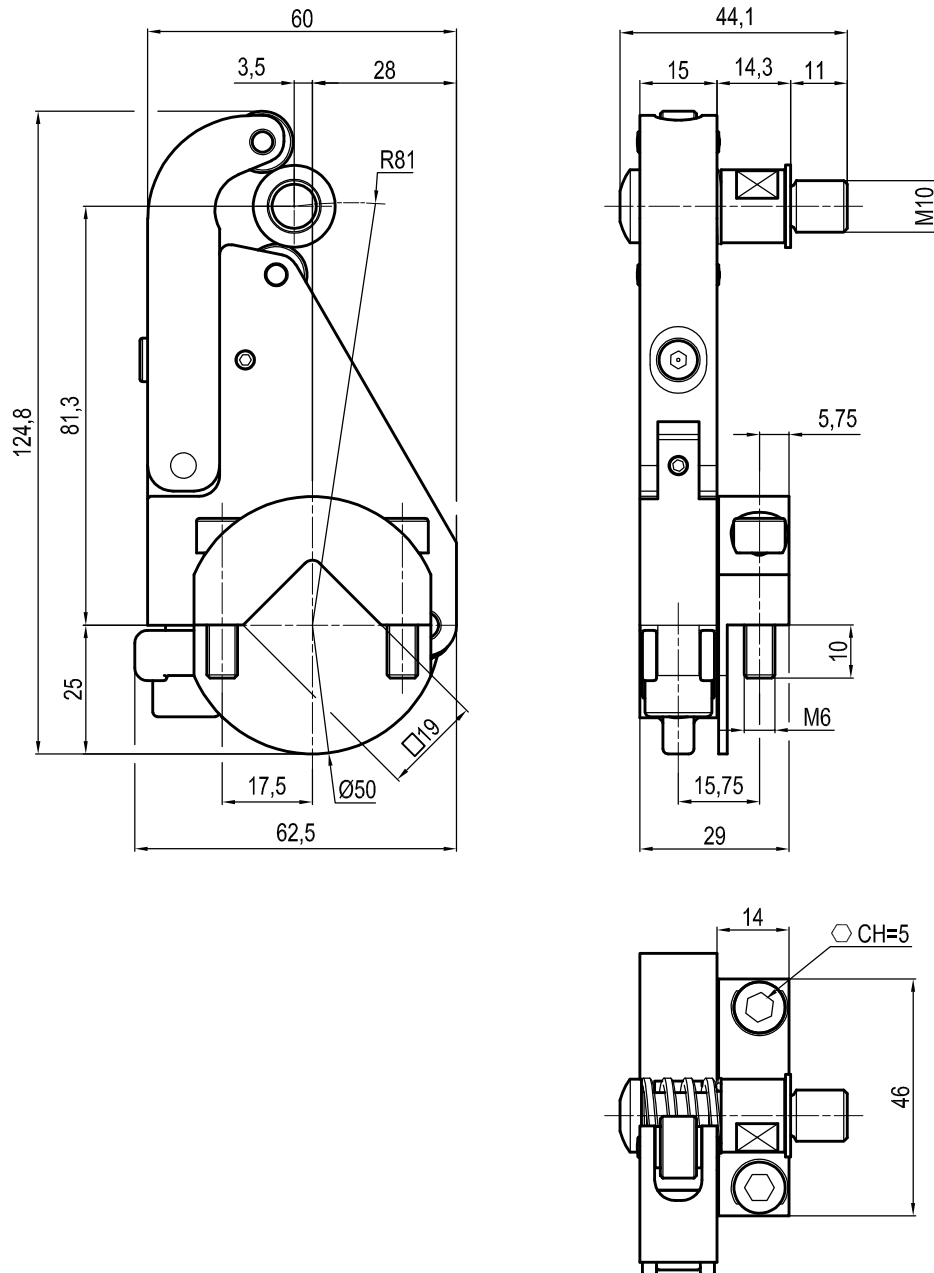
Clamp size	Material	Weight
40	Aluminium / Steel	0.3 Kg

□16 mm self holding



Clamp size	Material	Weight
40	Aluminium / Steel	0.3 Kg

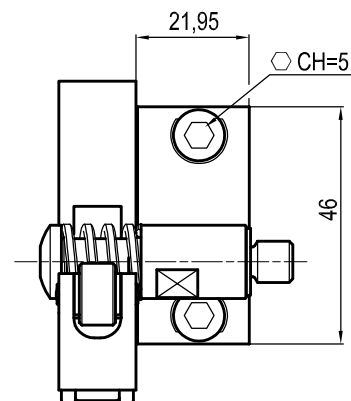
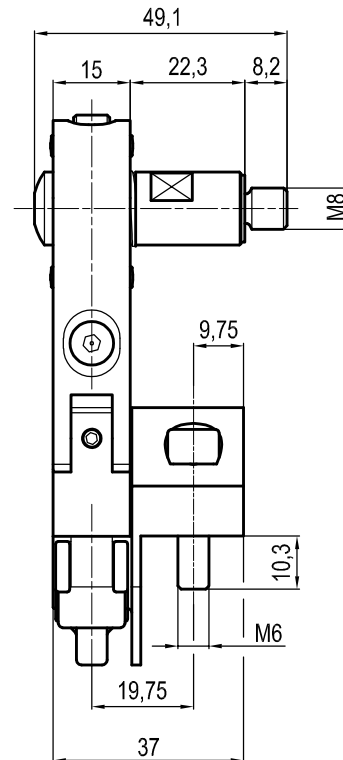
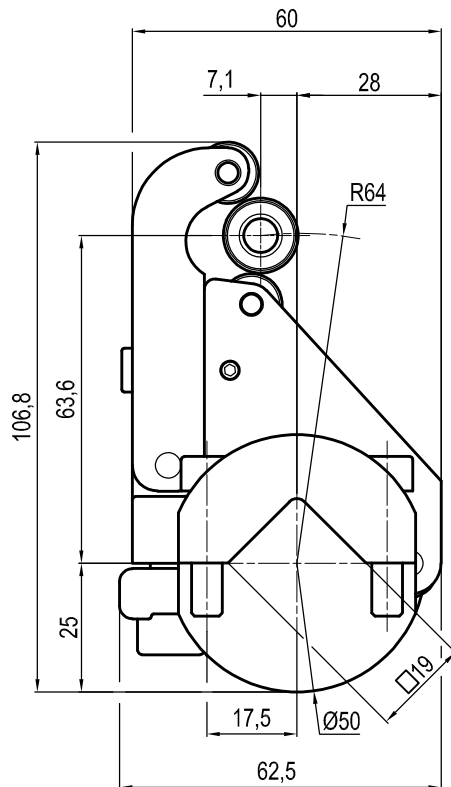
☐ **19 mm** self holding



Clamp size	Material	Weight
50/63	Aluminium / Steel	0.4 Kg

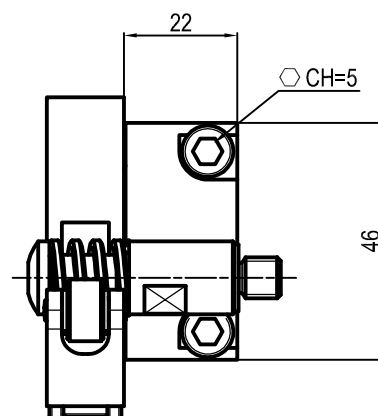
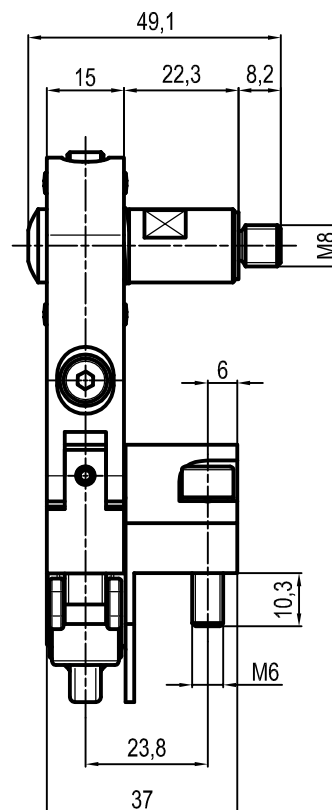
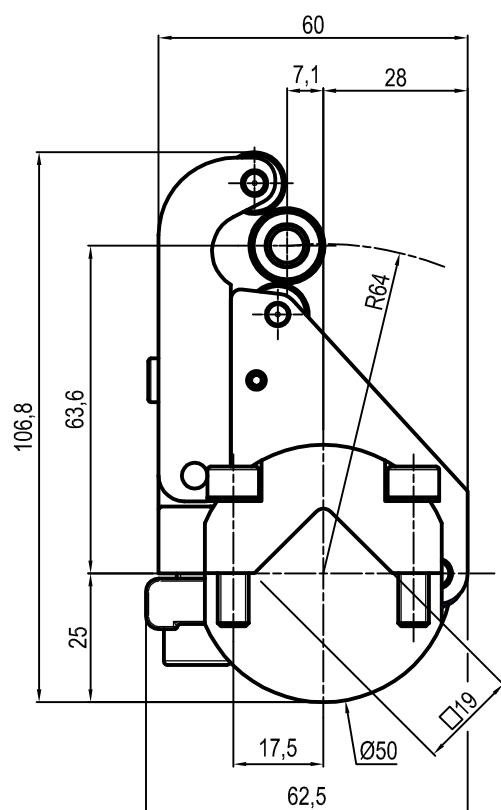
Subject to technical modification without notice.

□19 mm self holding



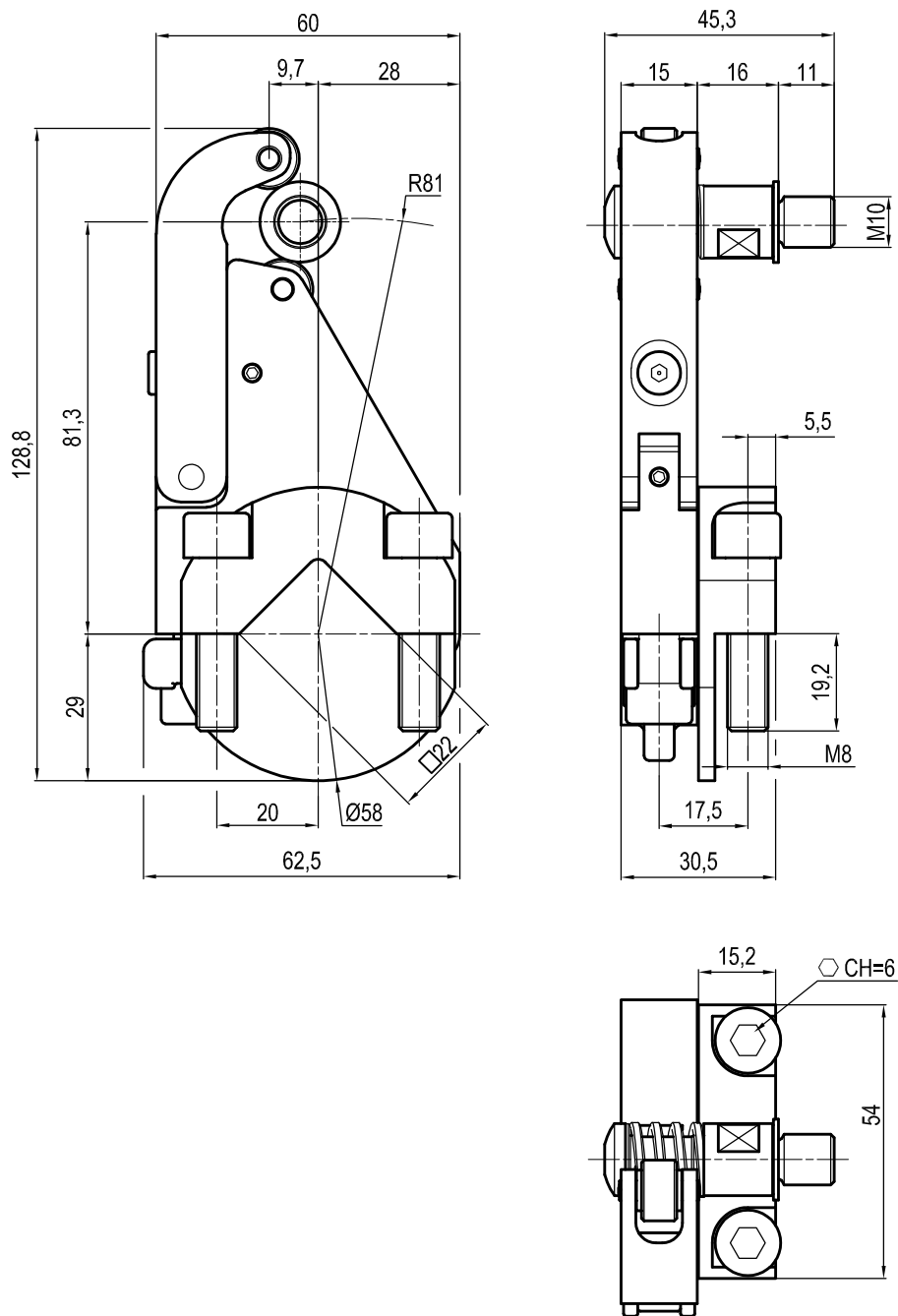
Clamp size	Material	Weight
50	Aluminium / Steel	0.45 Kg

□19 mm self holding



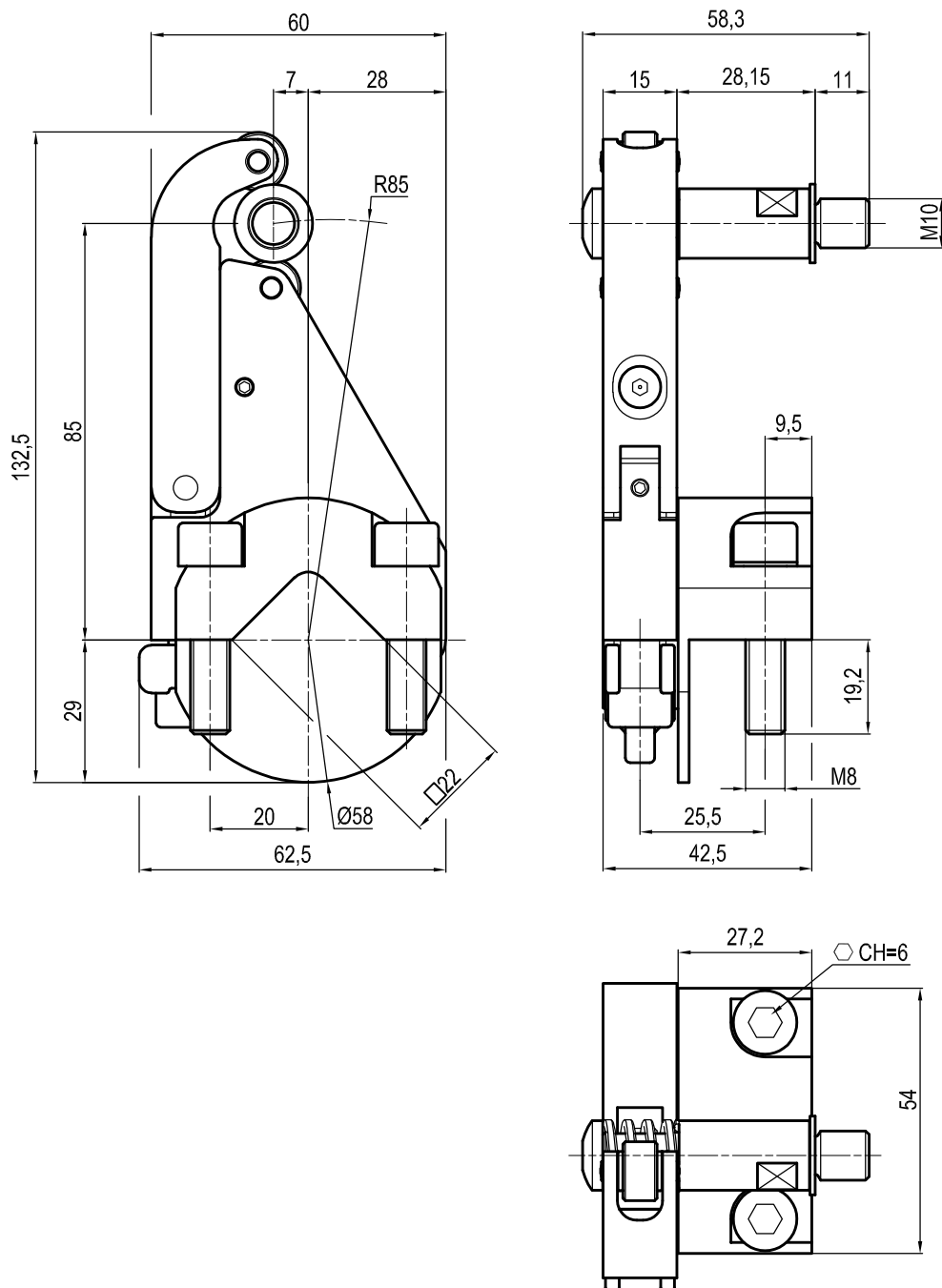
Clamp size	Material	Weight
50	Aluminium / Steel	0.45 Kg

□22 mm self holding



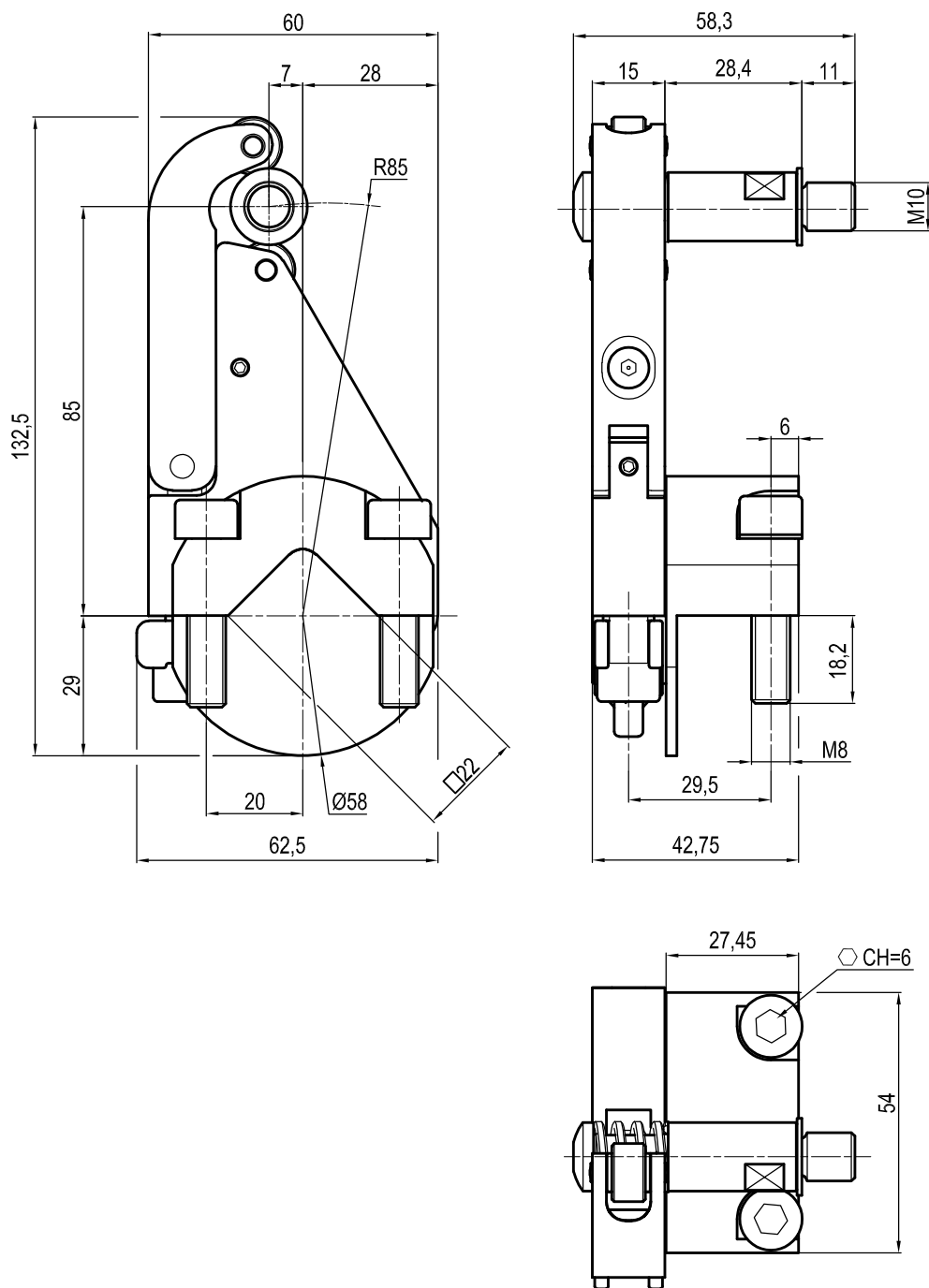
Clamp size	Material	Weight
63	Aluminium / Steel	0.5 Kg

□22 mm self holding



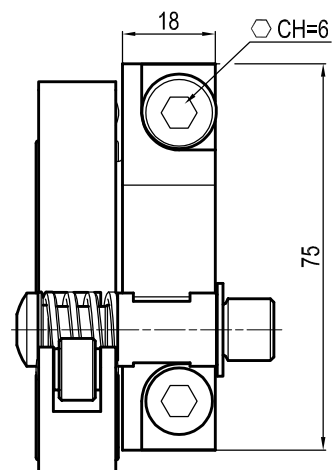
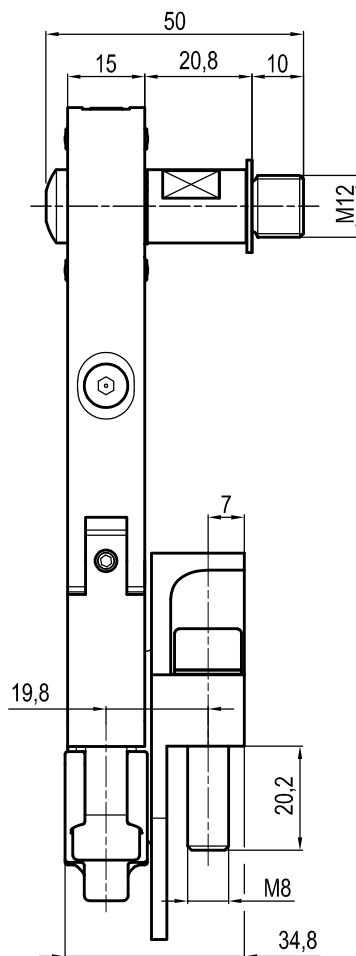
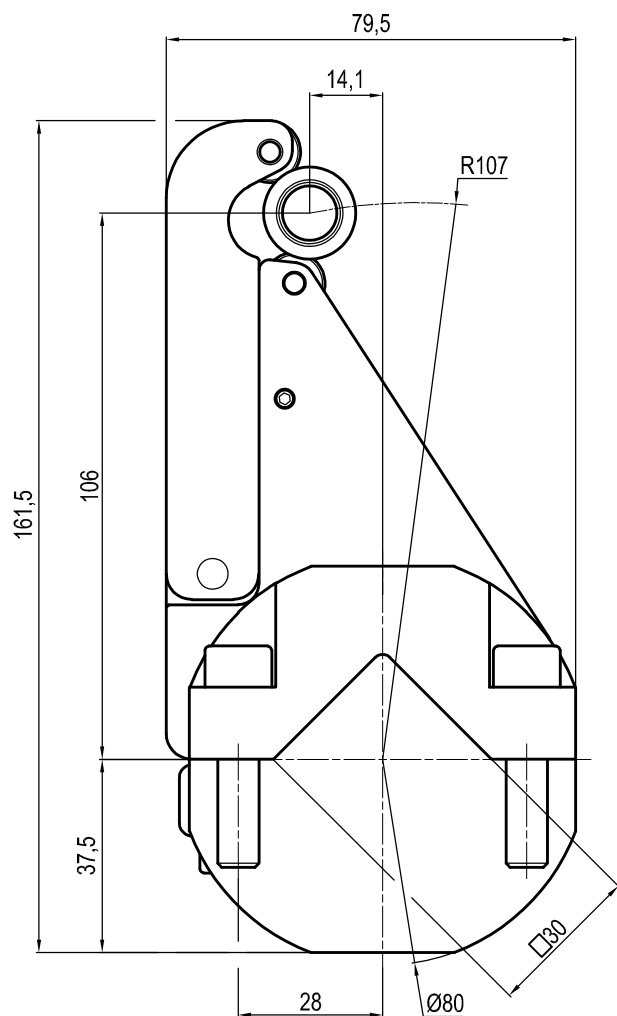
Clamp size	Material	Weight
63	Aluminium / Steel	0.6 Kg

□22 mm self holding



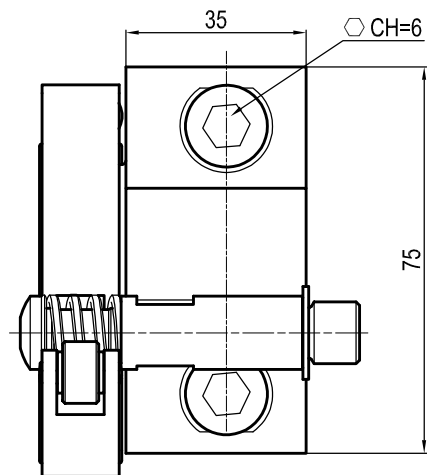
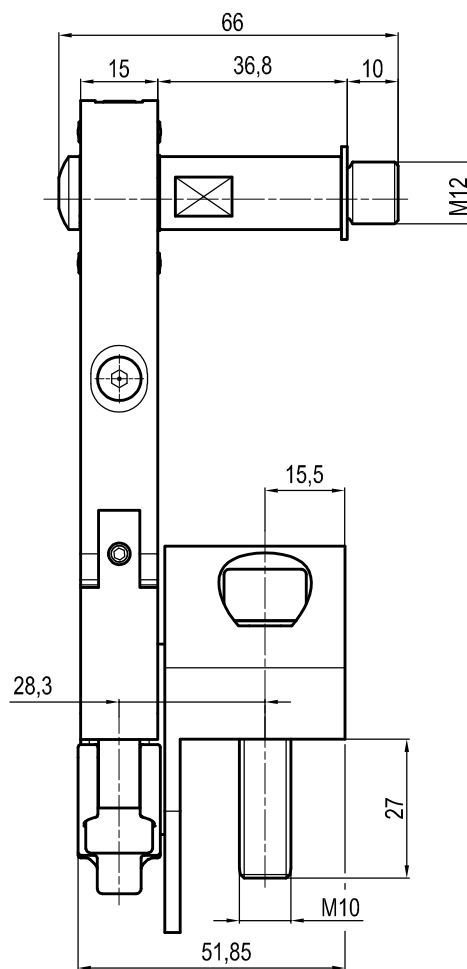
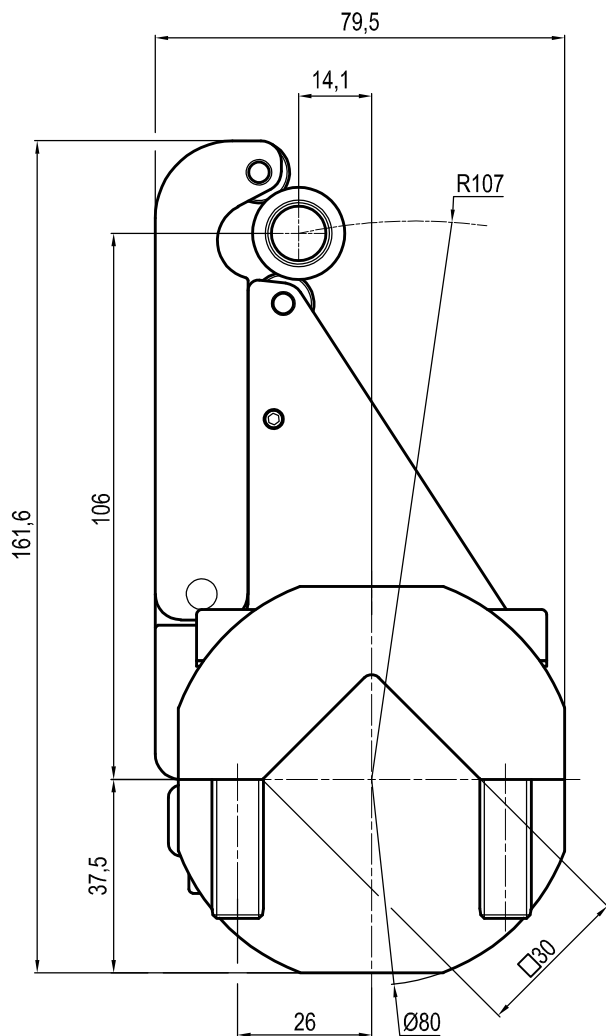
Clamp size	Material	Weight
63	Aluminium / Steel	0.6 Kg

□30 mm self holding



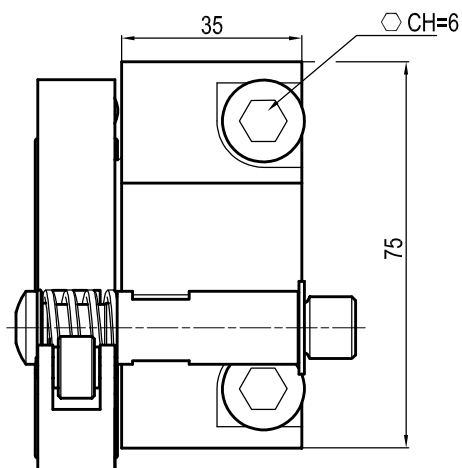
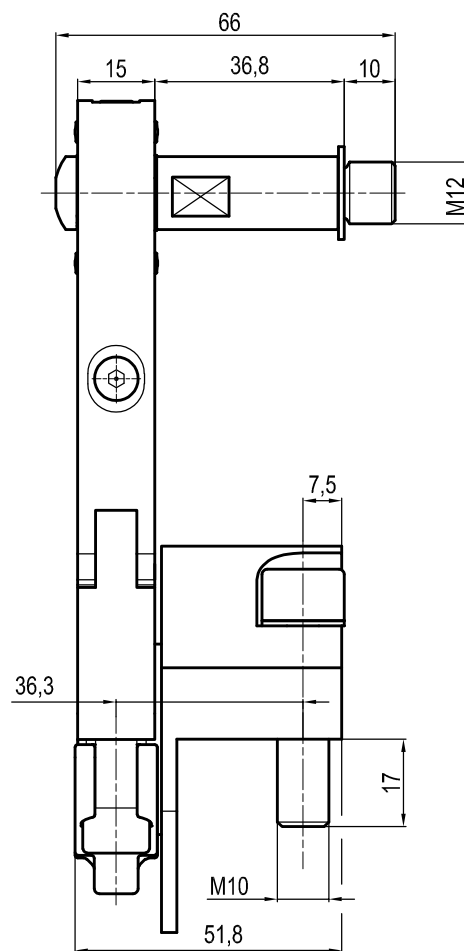
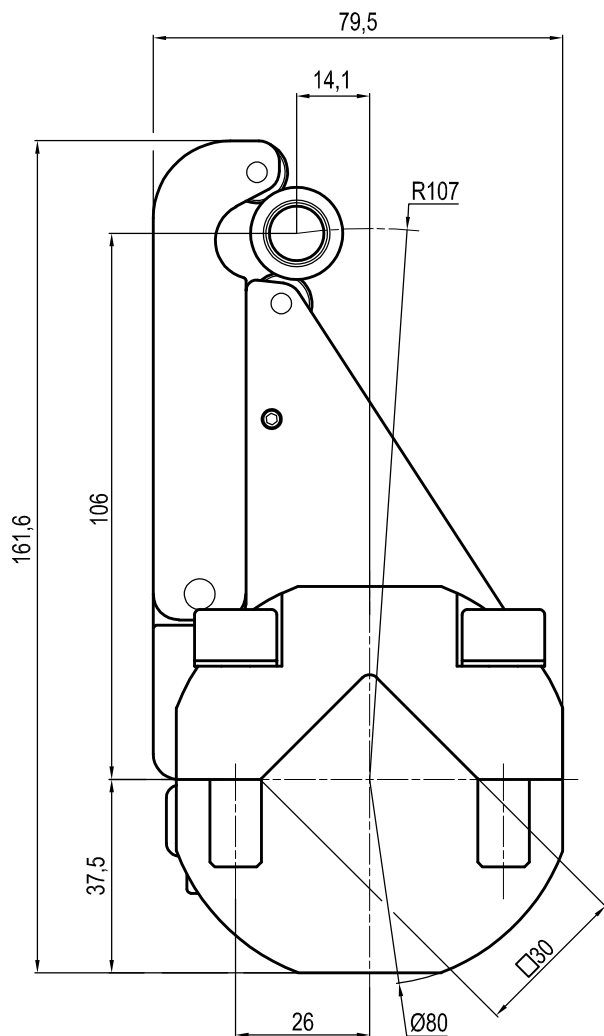
Clamp size	Material	Weight
80	Aluminium / Steel	0.85Kg

□30 mm self holding



Clamp size	Material	Weight
80	Aluminium / Steel	1Kg

□30 mm self holding



Clamp size	Material	Weight
80	Aluminium / Steel	1Kg