



COMPA 2 Miniature Valves

- Compact design: 15 mm body
- Original Univer spool system appreciated for decades
- Wide range of actuators and manual operators for panels - Univer original



Fluid	10 µm filtered air
Ambient temperature	-10 ÷ +45 °C
Fluid temperature	-20 ÷ +50 °C
Commutation system	spool
Ways/Positions	5/2
Pressure	max 10 bar
Control	manual, mechanical
Return	mechanical spring
Connections	M5, for sub-base
Nominal Ø	2 mm
Nominal flow rate	150 NI/min
Valve body	zamak
Guarnizioni	NBR
Actuators	technopolymer
Spool	aluminium
Electropilot	series A
Coil	U05 = 2 W (DC) 2,3 VA (AC)
Voltage	24 V DC - 12 V DC - 24 V AC - 110 V AC - 230 V AC (solo versione con connessione elettrica esterna)
Protection degree	IP65
Manual override	a pulsante incassato 1 posizione

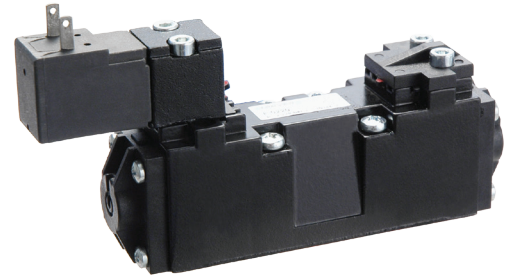


Reference standard

II 2G Ex h IIC T5 Gb

II 2D Ex h IIIC T100°C Db

II 3 GD c nA II T5 -10 °C ≤ Ta ≤ 45°C IP65



Ordering codes

- C.C. = closed centres
- O.C. = open centres
- P.C. = pressurized centres

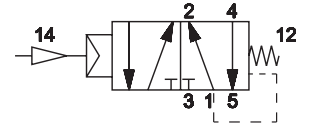
Series	Type	Control 14	Return 12
E	0 2	2	2
E COMPA 2 Miniature Valves	02 5/2 Sub-base mounting 04 5/2 Threaded body M5 05 5/3 C.C. Sub-base mounting 06 5/3 O.C. Sub-base mounting 07 5/3 P.C. Sub-base mounting 08 5/3 C.C. Threaded body M5 09 5/3 O.C. Threaded body M5 10 5/3 P.C. Threaded body M5	2 Electrical amplified DC 4 Pneumatic amplified 7 Electrical amplified DC/AC	0 Pneumomechanical spring 2 Electrical amplified DC 4 Pneumatic amplified 7 Electrical amplified DC/AC

**PNEUMATIC IMPULSE
SINGLE PNEUMATIC IMPULSEA**



E-0240

5/2

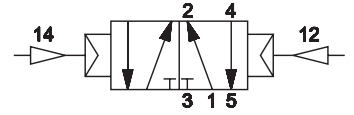


PNEUMATIC IMPULSE BISTABLE

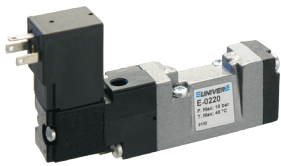


E-0244

5/2

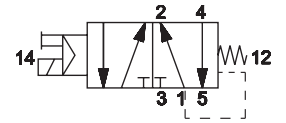


**ELECTRICAL IMPULSE
SINGLE ELECTRICAL IMPULSE**



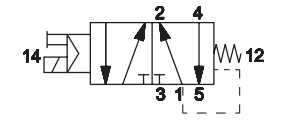
E-0220

5/2



E-0270

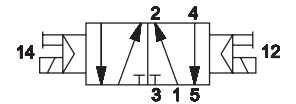
5/2



ELECTRICAL IMPULSE BISTABLE

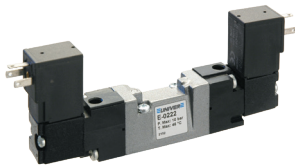
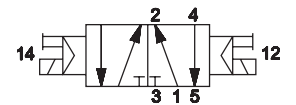
E-0222

5/2



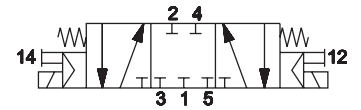
E-0277

5/2



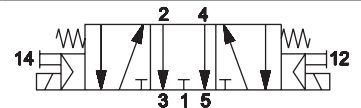
E-0522

5/3 C.C.



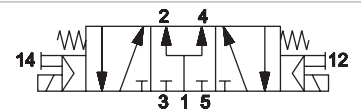
E-0622

5/3 O.C.



E-0722

5/3 C.P.



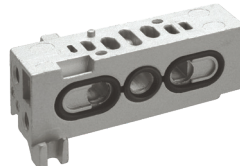
C.C. = closed centres O.C. = open centres P.C. = pressurized centres

INLET PLATE



E-4500

MANIFOLD SUB-BASE, THREADED CONNECTIONS



E-4500

PIASTRA CHIUSURA POSTO VALVOLA



E-4600

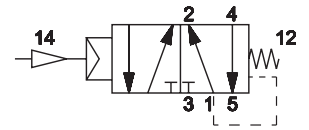
PNEUMATIC IMPULSE
SINGLE PNEUMATIC IMPULSE



E-0440

5/2

M5



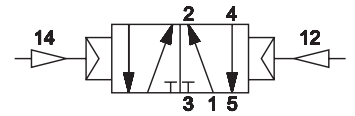
PNEUMATIC IMPULSE BISTABLE



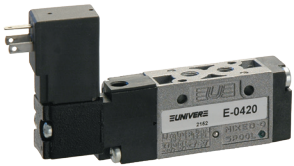
E-0444

5/2

M5



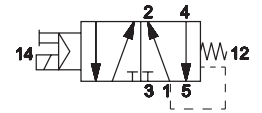
ELECTRIC IMPULSE
SINGLE ELECTRIC IMPULSE



E-0420

5/2

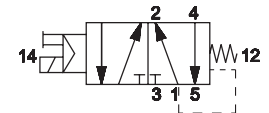
M5



E-0470

5/2

M5



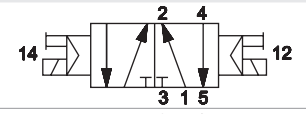
IMPULSE ELECTRIC BISTABLE 5/2



E-0422

5/2

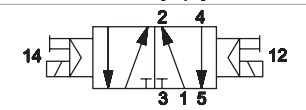
M5



E-0477

5/2

M5

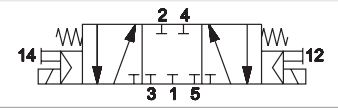


IMPULSE ELECTRIC BISTABLE 5/3

E-0822

5/3 C.C.

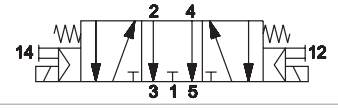
M5



E-0922

5/3 O.C.

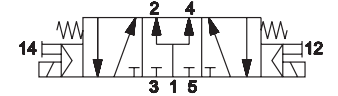
M5



E-1022

5/3 P.C.

M5



C.C. = closed centres O.C. = open centres P.C. = pressurized centres

U05 COIL WITH INTEGRATED 90° UPWARD CONNECTOR



DD-351

24V DC

U05 COIL WITH INTEGRATED 90° DOWNWARD CONNECTOR



DD-151

24V DC

U05 COIL WITH IN-LINE CONNECTOR



DD-551

24V DC

U05 COIL WITH LOOSE CABLES (LENGTH 300 MM)



DD-051L030

24V DC

DD-052L030

24V DC

U05 15 MM COIL - FASTON



	DC	AC
DD-013	-	230
DD-040	-	24
DD-041	12	-
DD-042	12	-
DD-050	-	48
DD-051	24	-
DD-052	24	-
DD-060	-	110
DD-070	-	230

CONNECTORS 15 MM



AM-5109

MINIATURE CONNECTOR WITHOUT WIRES



D-500

MINIATURE CONNECTOR WITH LOOSE CABLES



D-530-30

D-530-50

D-530-200

MINIATURE CONNECTOR WITH CABLE



D-535-30

D-535-50

D-535-200

Solenoid valves are supplied without coil and connector

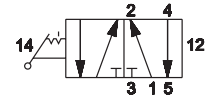
IMPULSE MECHANICAL AND MANUAL
BISTABLE LEVER VALVE



E-15422G

5/2

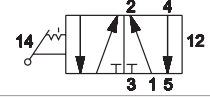
M5



E-15422N

5/2

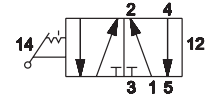
M5



E-15422R

5/2

M5



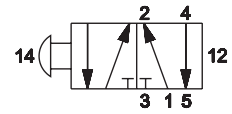
BISTABLE SLIDE VALVE



E-15420

5/2

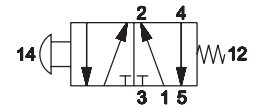
M5



E-15420A

5/2

M5



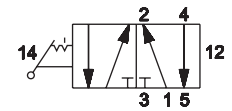
BALL VALVE



E-15402A

5/2

M5



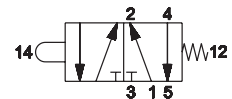
IMPULSE MECHANICAL AND MANUAL
BALL PUSH VALVE FOR MECHANICAL SCREW OFORATION



E-15403A

5/2

M5



AI-3550



AI-3551



AI-3560



AI-3562



AI-3563



AI-3570



AI-3571



AI-3572



AI-3511 ■

AI-3512 ■

AI-3513 ■



AI-3514 ■

AI-3516 ■

AI-3514D ■

AI-3516D ■



AI-3515 ■

AI-3517 ■

AI-3519 ■



AI-3520 ■

AI-3521 ■

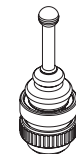


AI-3522 ■

AI-3523 ■



AI-3524 ■



AI-3525 ■



AI-3526 ■

Solenoid valves are supplied without coil and connector

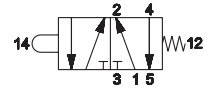
IMPULSE MECHANICAL AND MANUAL
BALL VALVE FOR MECHANICAL CONTROL FROM A CONTROL PANEL



E-15403A

5/2

M5



AI-3511Q ■
AI-3512Q ■
AI-3513Q ■



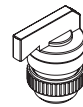
AI-3514Q ■
AI-3516Q ■
AI-3514QD ■
AI-3516QD ■



AI-3515Q ■
AI-3517Q ■
AI-3519Q ■



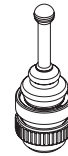
AI-3520Q ■
AI-3521Q ■



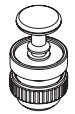
AI-3522Q ■
AI-3523Q ■



AI-3524Q ■



AI-3525Q ■



AI-3526Q ■