



PRP

Marking unit

P	R	P	5	0	0	0	8	0	0	7	3	M	S
1		2			3			4		5		6	

1 Series	2 Size	3 Arm length
-----------------	---------------	---------------------

PRP = Marking unit

025 = 25 daNm cylinder Ø 63 mm
500 = 500 daNm cylinder Ø 100 mm

044 = 44 mm for size 025
080 = 80 mm for size 500
130 = 130 mm for size 500

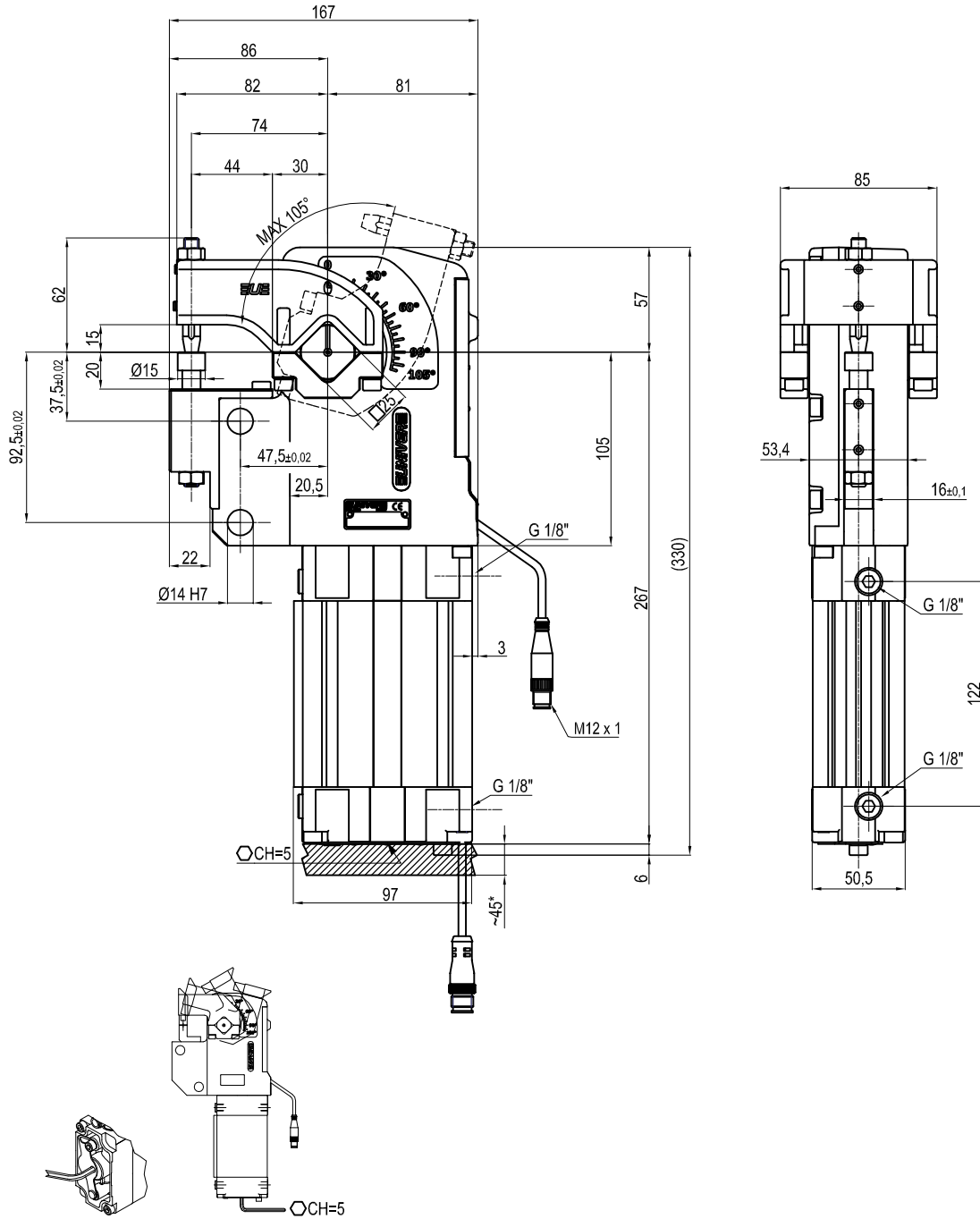
4 Opening angle	5 Marketing head mounting position
------------------------	---

105 = 105° adjustable opening angle
 from 5° to 105° for size 025
073 = 73° fixed opening angle for size 500

M = on the movable part (for sizes 025 and 500)
F = on the fixed part (for size 025)

7 Progressive numbering

S = Standard version
 Progressive numbers for special products
 are assigned by the sales dept.



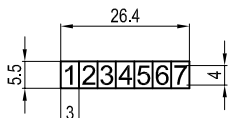
Size	Cylinder	Moment 0,55 MPa	Weight	Air / Cycle (0,5 MPa)
025	63	250 Nm	4,5 Kg	2,0 NL

- Min./Max. operating pressure: **0,4 / 0,8 MPa**
- Operating temperature: **5° ± 45° C**
- Adjustable opening angle from 10° to 105°
- Possibility to orientate the marking surface
- IP code: **IP 65**

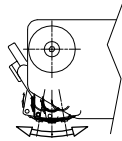
* : SPACE FOR OPENING ANGLE ADJUSTMENT

Subject to technical modifications without notice.

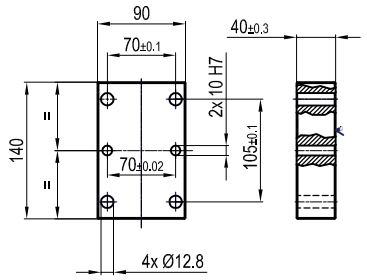
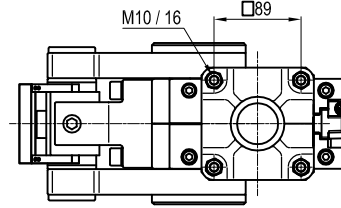
Marking Unit



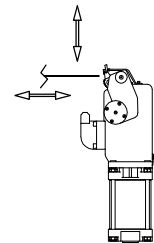
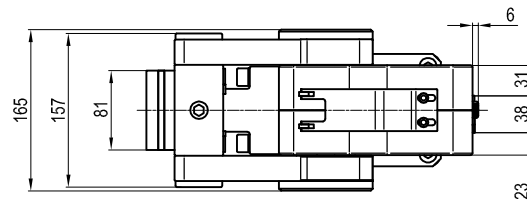
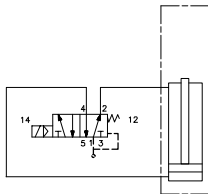
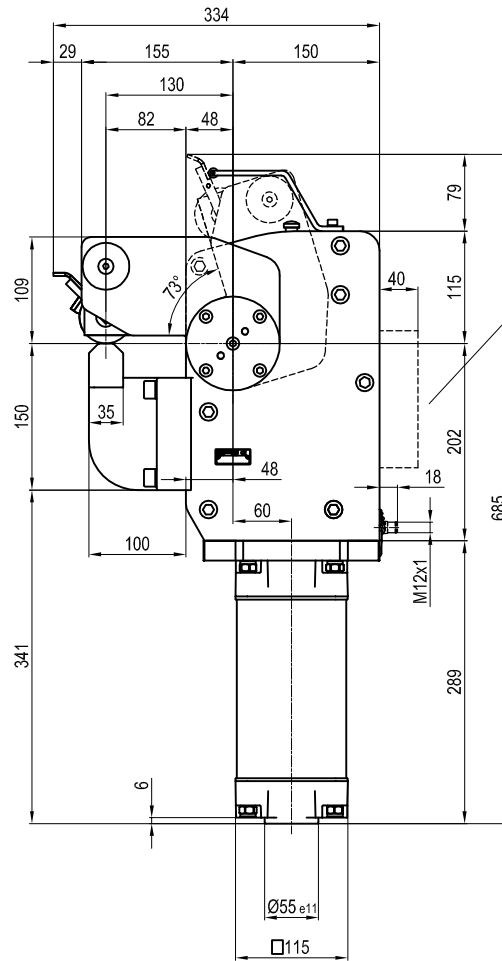
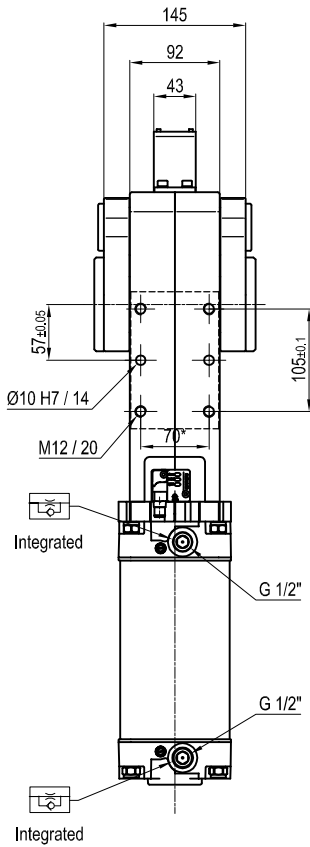
Marking surface with 4 mm high characters



Possibility to orientate the marking surface



Mounting plate



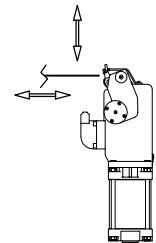
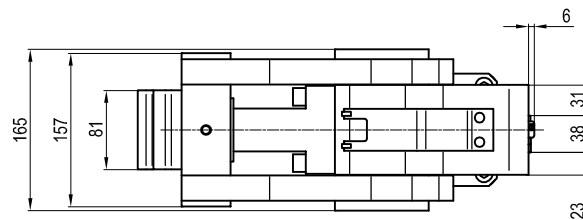
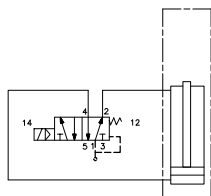
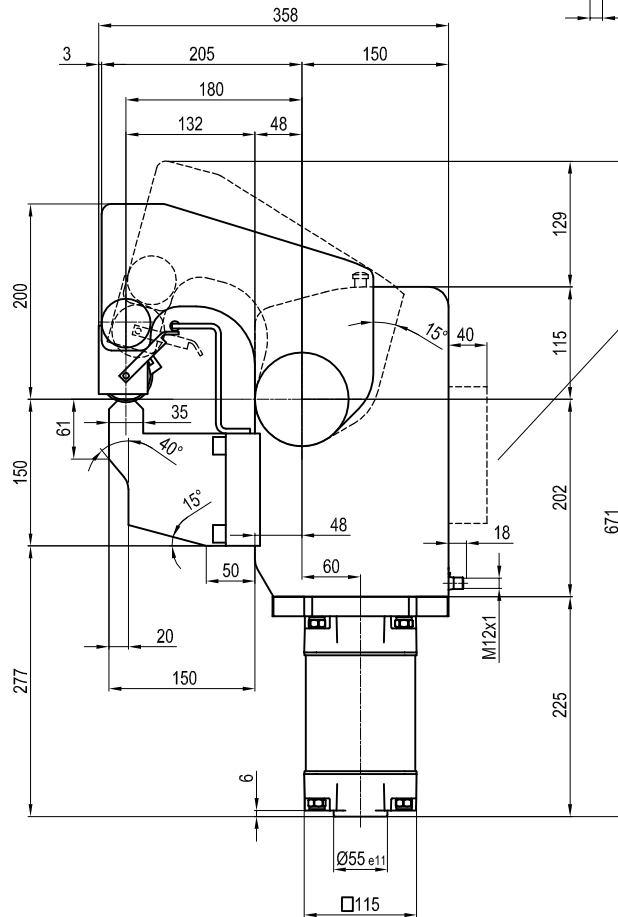
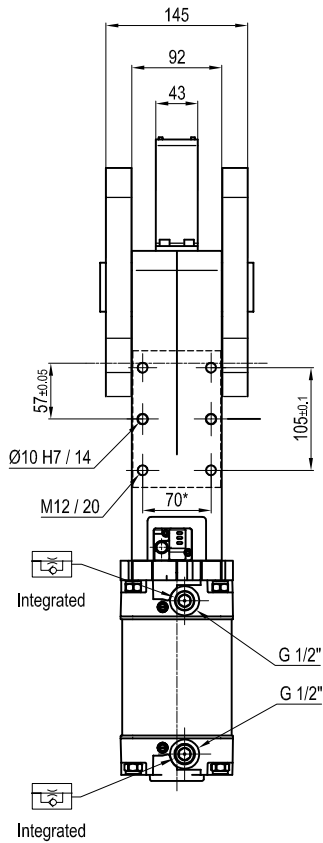
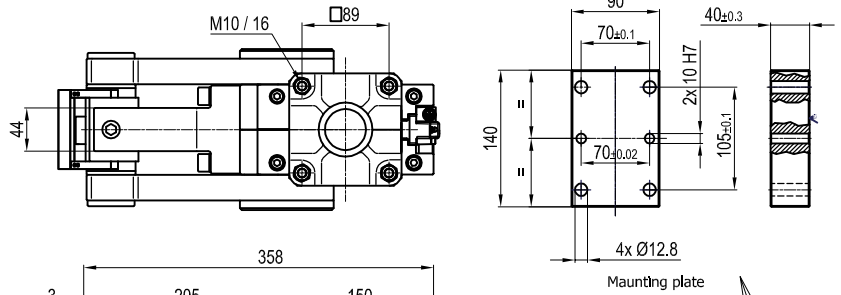
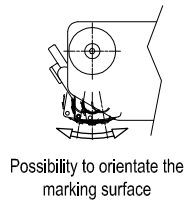
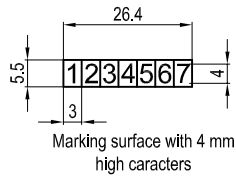
Size	Cylinder	Moment 0,55 MPa	Weight	Air / cycle (0,5 MPa)
500	100	5000 Nm	52 Kg	11,2 NL

* : TOLERANCE BETWEEN DOWEL HOLES ± 0.02, TO SCREW HOLES ± 0.1

- Min./Max. operating pressure: **0,4 / 0,8 MPa**
- Operating temperature: **5° ÷ 45° C**
- Opening angle: **73°**
- Possibility to orientate the marking surface
- Possibility to mark different metal sheet thicknesses (2mm) without any intervention
- IP code: **IP 65**

Subject to technical modifications without notice.

Marking Unit



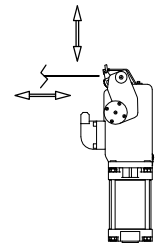
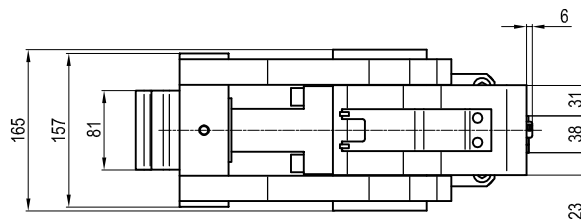
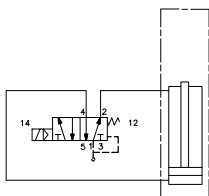
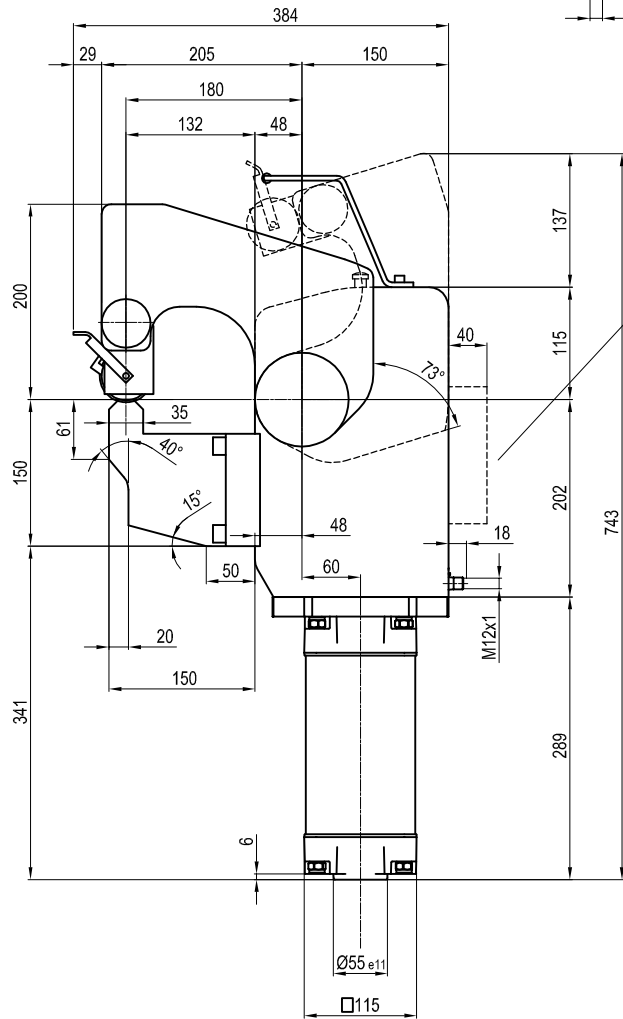
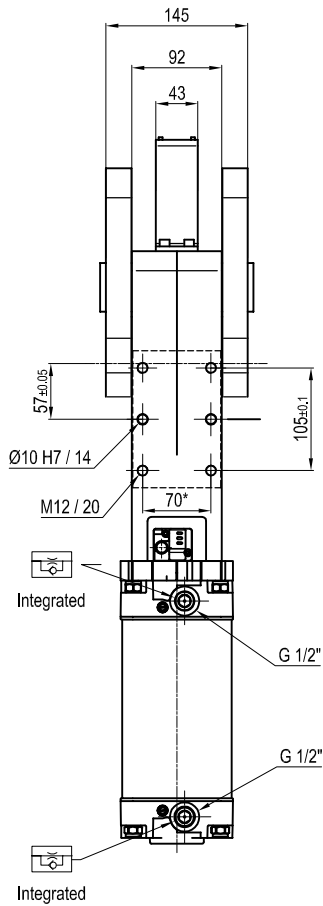
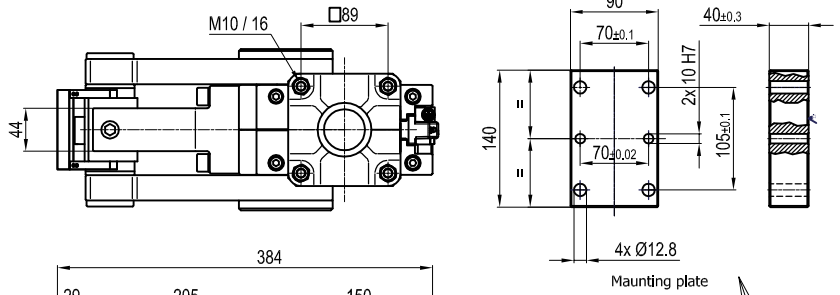
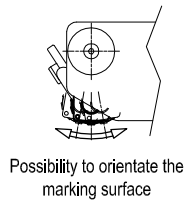
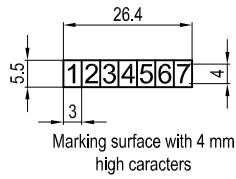
Size	Cylinder	Moment 0,55 MPa	Weight	Air / cycle (0,5 MPa)
500	100	5000 Nm	58 Kg	11,2 NL

* : TOLERANCE BETWEEN DOWEL HOLES ±0.02, TO SCREW HOLES ±0.1

- Min./Max. operating pressure: 0,4 / 0,8 MPa
- Operating temperature: 5° ÷ 45° C
- Opening angle: 73°
- Possibility to orientate the marking surface
- Possibility to mark different metal sheet thicknesses (2 mm) without any intervention
- IP code: **IP 65**

Subject to technical modifications without notice.

Marking Unit



Size	Cylinder	Moment 0,55 MPa	Weight	Air / cycle (0,5 MPa)
500	100	5000 Nm	58 Kg	11,2 NL

* : TOLERANCE BETWEEN DOWEL HOLES ± 0.02, TO SCREW HOLES ± 0.1

- Min./Max. operating pressure: **0,4 / 0,8 MPa**
- Operating temperature: **5° ÷ 45° C**
- Opening angle: **73°**
- Possibility to orientate the marking surface
- Possibility to mark different metal sheet thicknesses (2 mm) without any intervention
- IP code: **IP 65**

Subject to technical modifications without notice.