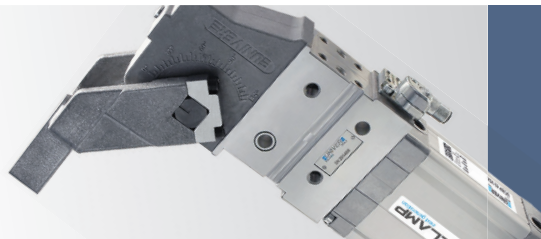
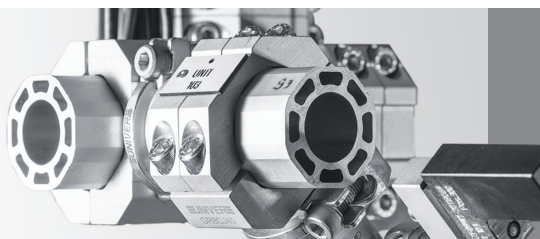


**PNEUMATIC
AUTOMATION**



AUTOMOTIVE



MODULAR
TOOLING
SYSTEM

PRODUCT
RANGE

UNIVER S.p.A.
Headquarters
20128 Milano - ITALY
Via Eraclito, 31
Tel. +39 02 25298.1
Fax +39 02 2575254
info@univer-group.com
www.univer-group.com

In light of technical updates, **Univer S.p.A.** reserves the right to modify technical features of its products with no obligation to issue prior notice.

Information contained in the present catalogue is pure indication. For further details about product technical features and related parameter values to be respected for a proper functioning, please refer to the datasheets available at:
www.univer-group.com

All rights reserved to **Univer S.p.A.** Unauthorized reproduction prohibited.

2

Cylinders



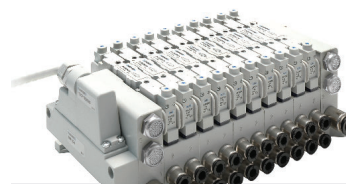
6

High-Tech



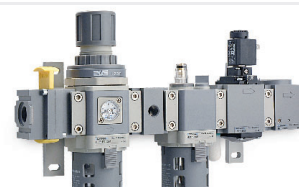
8

Valves



16

Air Treatment



20

Accessories



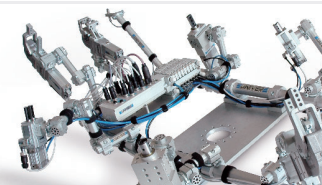
22

Clamping technology



28

GR8 Tooling



STANDARDS-BASED CYLINDERS

M

Microcylinders ISO 6432
Ø8 ÷ 25 mm



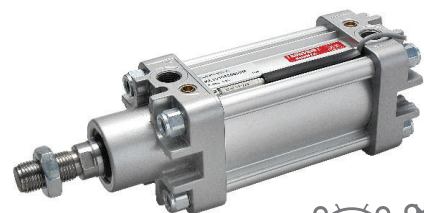
KL

Pneumatic Cylinders ISO 15552
Ø32 ÷ 125 mm
CLEAN PROFILE



KE/K

Pneumatic Cylinders ISO 15552
Ø32 ÷ 125 mm



STANDARDS-BASED COMPACT CYLINDERS

RP/RM

UNITOP Compact Cylinders (RP Ø 16 ÷ 63 mm),
ISO 21287 (RM Ø16 ÷ 100 mm)



RO/RN

UNITOP Compact Cylinders (RO Ø 16 ÷ 63 mm),
ISO 21287 (RN Ø16 ÷ 63 mm)
Octagonal tube NON-ROTATING



OVAL/SHORT STROKE/ROTARY CYLINDERS

OV

Oval cylinders
Ø18 ÷ 80 mm



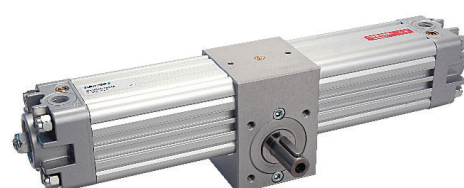
W

Short stroke cylinders
Ø12 ÷ 100 mm



R

Pneumatic Rotary Actuators
Ø32 ÷ 125 mm



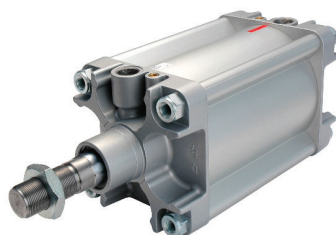
KD

Pneumatic Cylinders ISO 15552
 $\varnothing 32 \div 125$ mm
HEAVY SERIES TUBE



K

Pneumatic Cylinders ISO 15552
 $\varnothing 160/200 - \varnothing 250/320$ mm



KL

CLEAN PROFILE

Easier to clean

QUICK INSTALLATION

Sensors and connections on one side

UNIVER TECHNOLOGY

Strong and Reliable

ISO 15552

Interchangeability

RS

STRONG Compact Cylinders
 $\varnothing 32 \div 100$ mm



RQ

STRONG Compact Cylinders
 $\varnothing 32 \div 100$ mm
 Octagonal tube **NON-ROTATING**



YR3

Double Rack Rotary Table



PM/PK/PRM

Pneumatic Cylinders
 $\varnothing 16 \div 125$ mm **STAINLESS STEEL**



RODLESS CYLINDERS

S1

Rodless Cylinders standard version
Ø16÷50 mm



S5

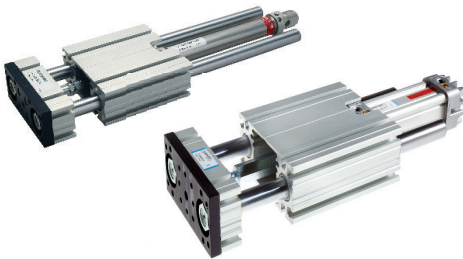
Rodless Cylinders with integrated guides
Ø25÷50 mm - Technopolymer sliding guides



GUIDED CYLINDERS

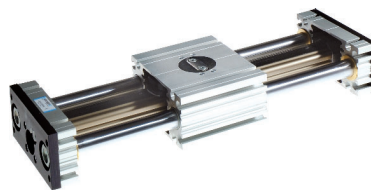
J1

Slide Units for pneumatic cylinders
M, KE/K, KD series



J3

Slide Units for rodless cylinders
S1 series



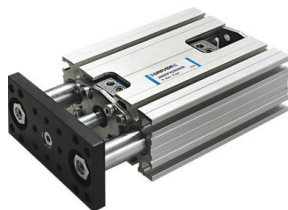
J6_RS

Slide Units for **STRONG** compact cylinders
RS series



J65

Slide Units for compact cylinders
RP Ø25 series

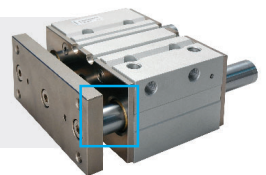


JLES/JLEV

Guided Compact Cylinders
Bearings (JLES) - Ball bushing (JLEV)



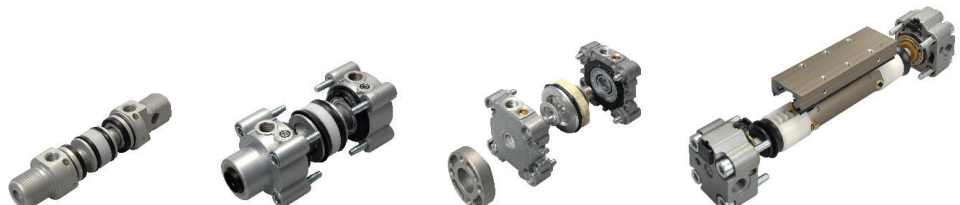
Version with **metallic**
piston rod scraper
(Upon request)



ASSEMBLY KITS

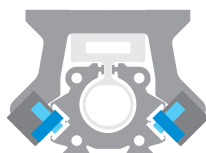
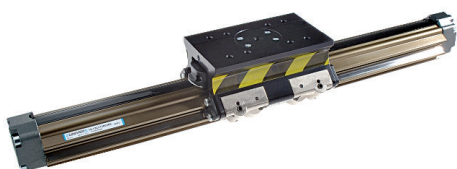
CYLINDER

ISO 6432
ISO 15552
UNITOP/ISO 21287
STRONG
RODLESS CYLINDERS



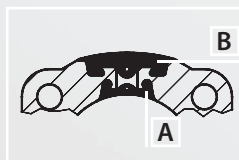
VL1

Rodless Cylinders with 90° integrated guides
 Ø25÷50 mm - Sliding on ball bearings



S1/S5/VL1

UNIVER Original since 1988



A - Internal strip (seal)
B - External strip (protection)
 made of reinforced elastomer
 with Kevlar fiber

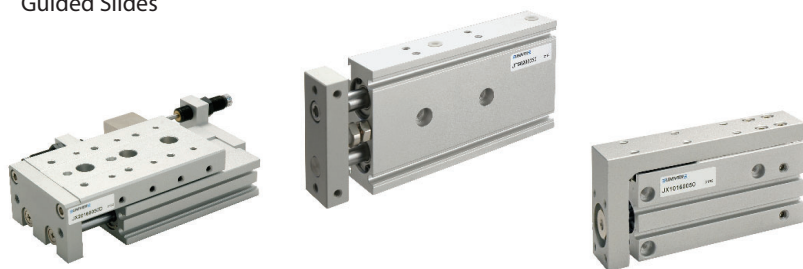
J64RT2

Slide Units for telescopic cylinders
 RT2 series



JTE/JX

Guided Slides



ACCESSORIES

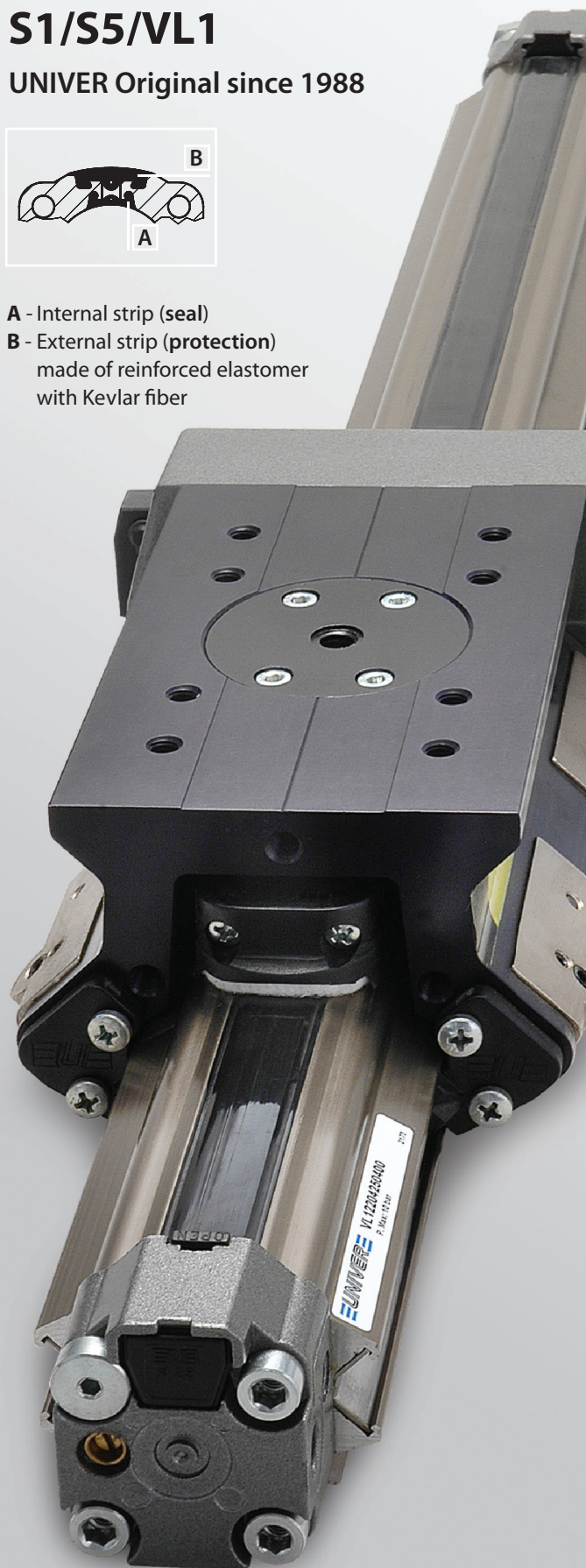
MP

Clamping cylinder



YDA/YDR

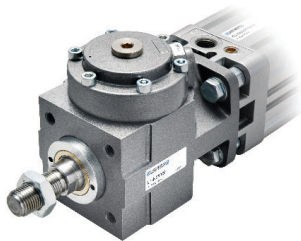
Hydraulic Shock Absorbers



LOCKING UNITS

L1-N

Locking units for cylinders and piston rods



ORIGINAL

Locking system
UNIVER Original since 1998

STATIC/DYNAMIC

Static locking and dynamic braking in a single device

POWERFUL

The highest locking force among market equivalent devices

SAFE

No rod slipping even if affected by oil and grease

L6

Locking Units for rodless cylinders S5 - VL1 series



PNEUMATIC GRIPPERS

YMA11/YMA20

Angular, 180° and Parallel
Pneumatic Gripper



YMP20/ YMP30/ YMP40

Parallel with Linear Guide, Low Profile
and Wide-type Pneumatic Gripper



YMP50

Self-centering 3 Jaw
Pneumatic Gripper



SENSORS

DF/DH/DF-T

Magnetic and Electronic
Proximity Sensors

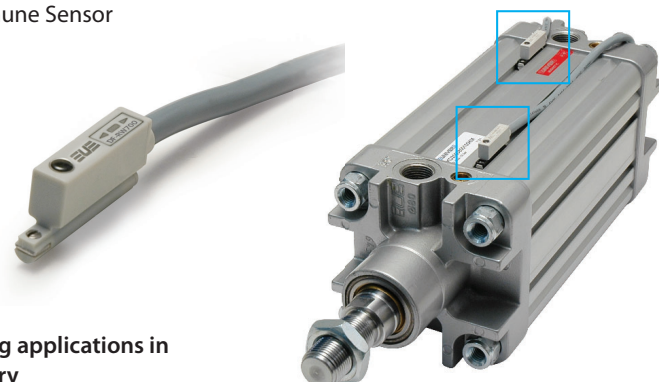


DF-RW700

Magnetic Field Immune Sensor



Suitable for welding applications in
Automotive Industry



TELESCOPIC CYLINDERS

RT

Telescopic cylinders
 2 stages (RT2 Ø 25 ÷ 63 mm) 3 stages (RT3 Ø 40 ÷ 63 mm)



Telescopic Cylinder
2 stages

PROGRAMMABLE PNEUMATIC ACTUATORS

NTZ-NQZ-NFZ

Pneumatic actuator with integrated digital measuring detector
 and safety locking device



DF-MS/DF-MA

Position sensors

NEW

 **IO-Link**



RT

ORIGINAL

UNIVER Original design and technology

INDUSTRIALIZED

Industrialized components and
 advanced technology

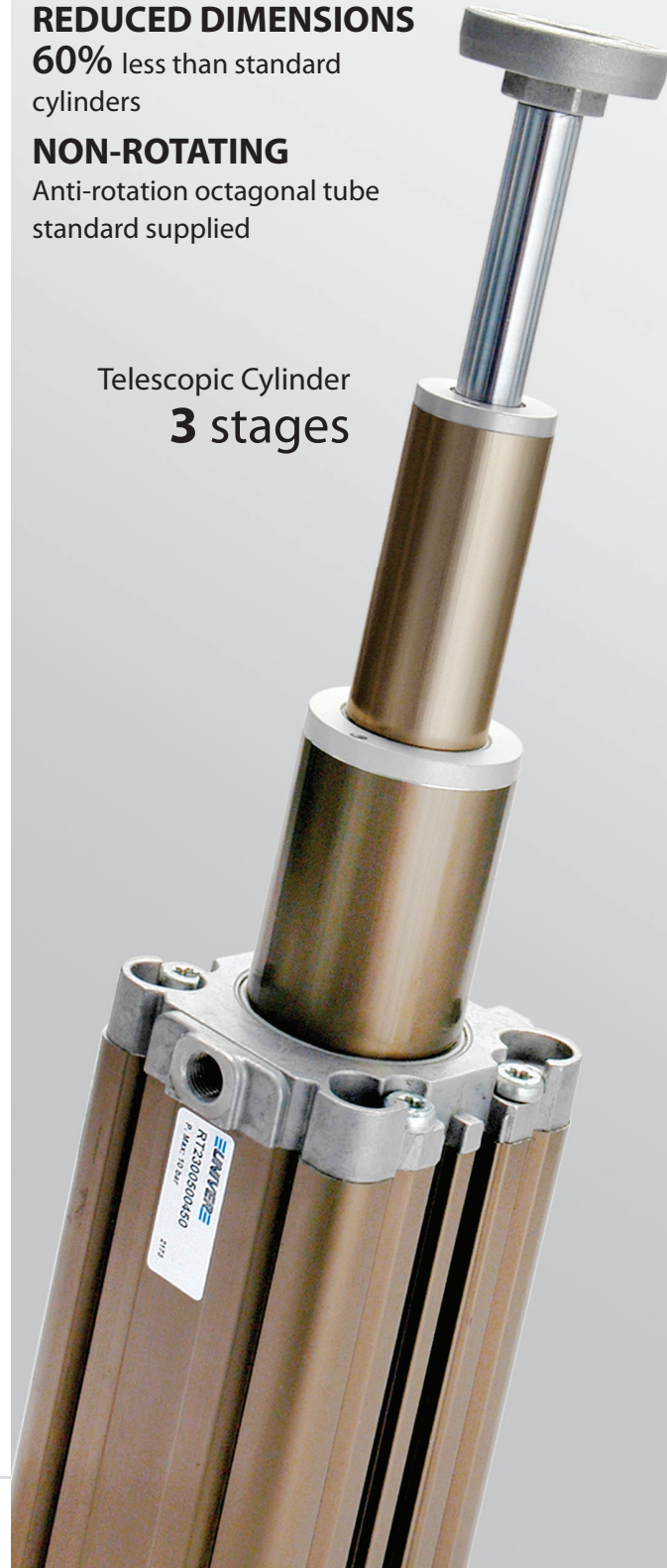
REDUCED DIMENSIONS

60% less than standard
 cylinders

NON-ROTATING

Anti-rotation octagonal tube
 standard supplied

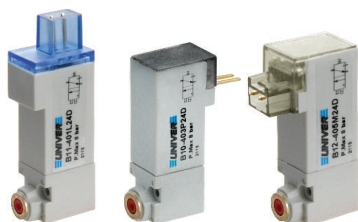
Telescopic Cylinder
3 stages



ELECTROPILOTS

B11 - B10 - B12

ISO 15218 - 10 mm Nanovalves
B11 Standard
B10 Low consumption
B12 High flow rate



B

10 mm Nanovalves

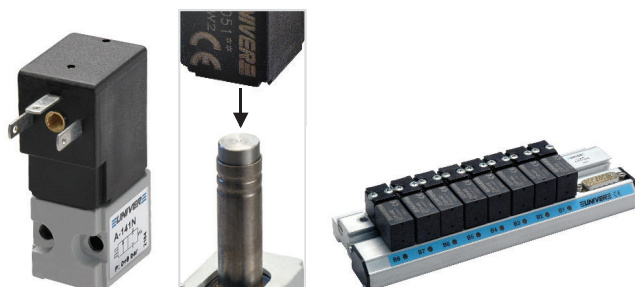


0,5 W

Low power consumption

A

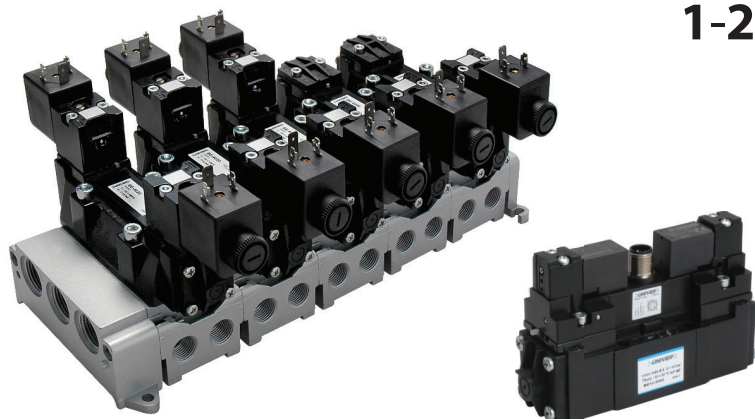
ISO 15218 - 15 mm Microvalves



STANDARDS-BASED VALVES

BE/BE12

ISO 5599/1 Valves-Mixed and spool system



M12

Size
1-2-3-4

MIXED AND SPOOL SYSTEM

Versions with either mixed or spool system available for all series



MIXED
for heavy applications



SPOOL
for all applications

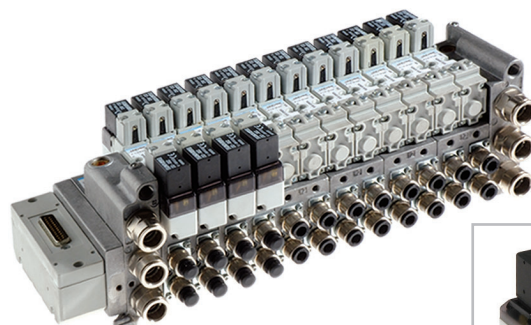
AC-N

NAMUR Valves



BD

ISO 15407-1/2 Valves

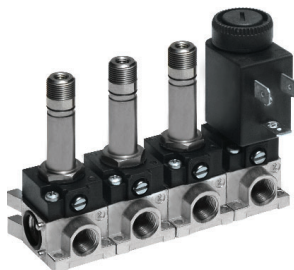


M12
Connector



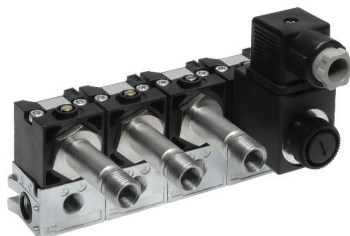
AA

U1 Miniature Electropilots



AB

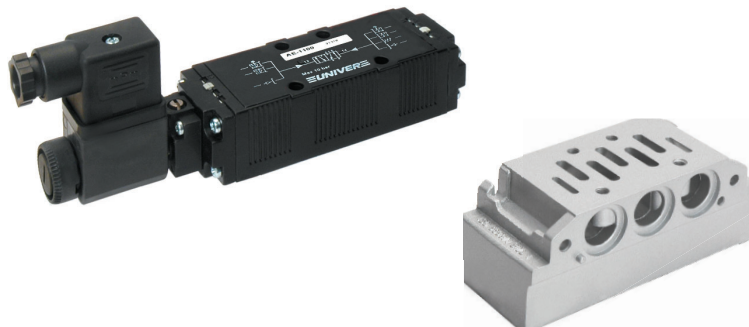
U2 Miniature Electropilots



CSA/UL Certification
 CSA C22.2 N.139-13
 UL 429/2013

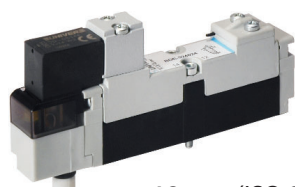
AE

ISO 5599/1 Light Series Valves

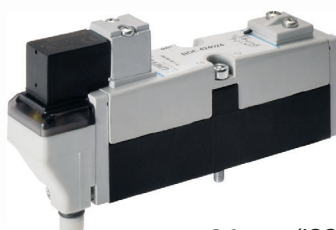


Size
1-2

ISO
01-02

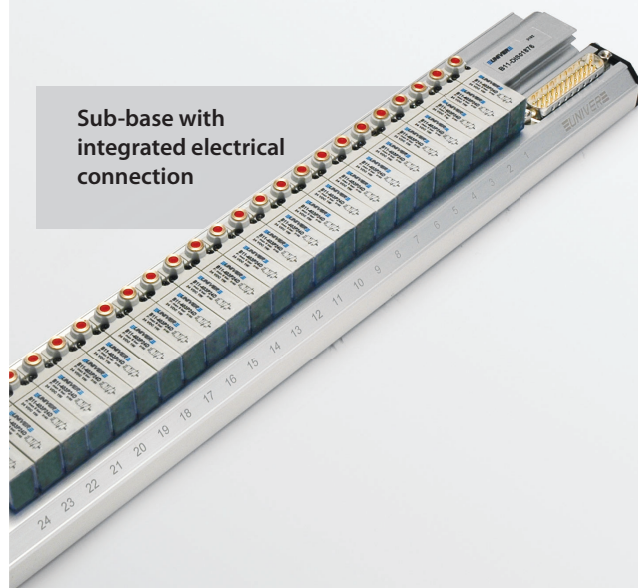


18 mm (ISO 02)



26 mm (ISO 01)

Sub-base with
integrated electrical
connection



ISO 15407-1/2 Valves

BDE

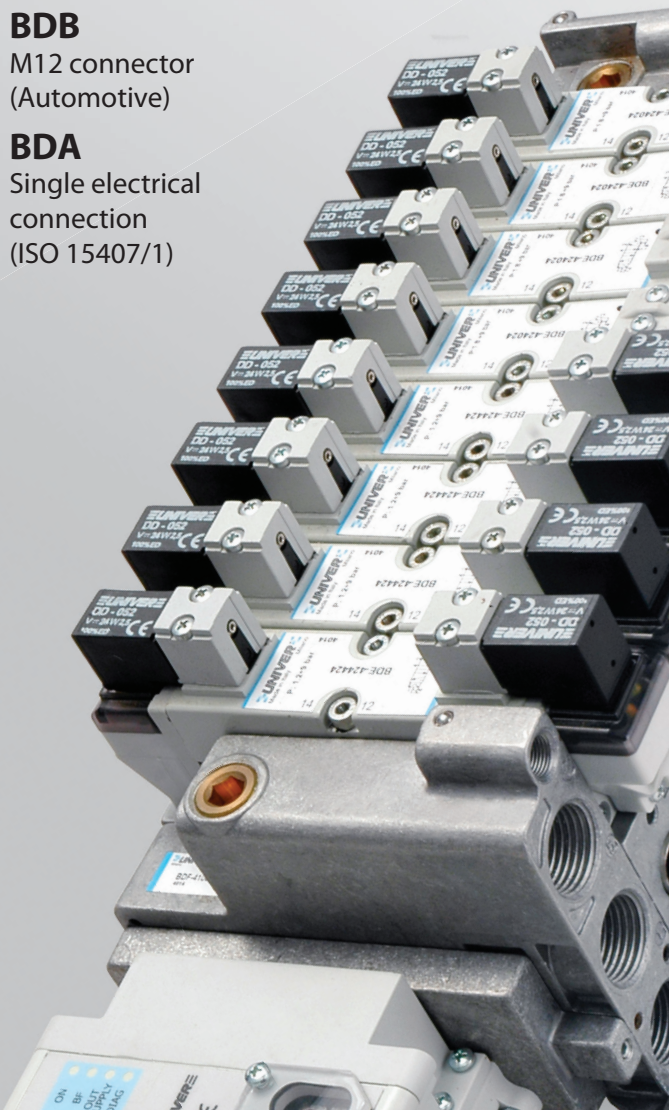
Integrated electrical
connection
(ISO 15407/2)

BDB

M12 connector
(Automotive)

BDA

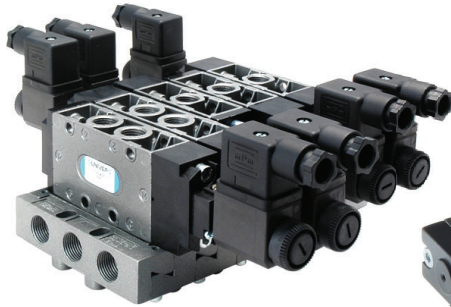
Single electrical
connection
(ISO 15407/1)



SPOOL VALVES

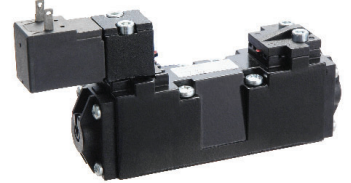
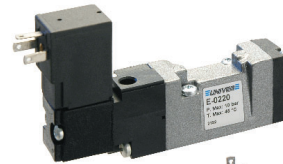
CL/CM

UNIVERSAL Valves G1/8 - G1/4



E/F

COMPA 2 (E series) COMPA 4 (F series)
Miniature Valves



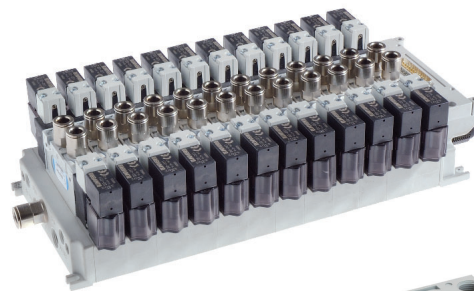
G7

26 mm Valves and Solenoid Valves - G1/8



G6

20 mm Valves and Solenoid Valves - Threaded body G1/8



POPPET VALVES

AF/AG

Poppet Valves for compressed air (AF)
and for vacuum (AG) G1/8 ÷ G1 1/2



CH

Poppet valves G1/8
2/2 - 3/2



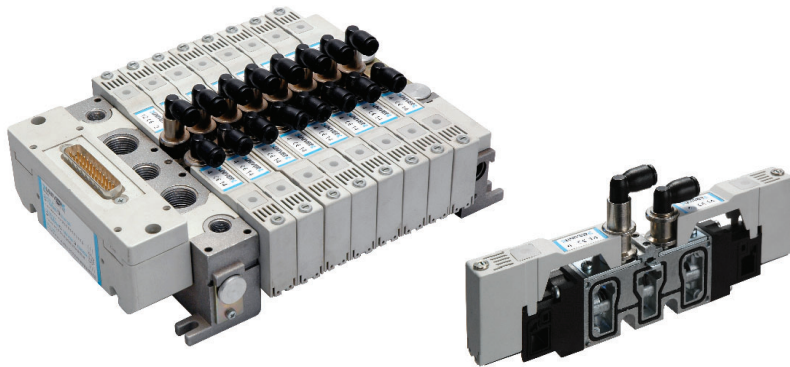
AI/AI-JET

Miniature Limit Switches (AI)
JET series Pneumatic Switches (AI-JET)
Valves with panel operation (AI-JET2)



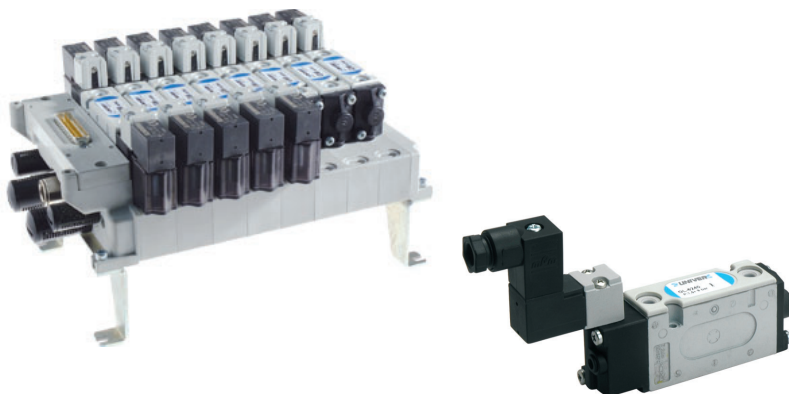
PS

COMBOBOX Valves



GL6

20 mm Valves and Solenoid Valves - For sub-base mounting



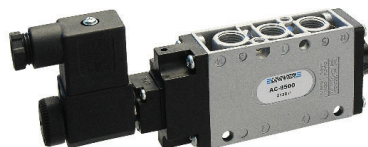
AM

Pneumatic and Solenoid
Foot Valves



AC

MIXED Valves G1/8 - G1/4 - G1/2



AF/AG

WIDE RANGE

G1/8 ÷ G1 1/2

2/2 - 3/2 NC-NO

COMPRESSED AIR VERSION

VACUUM VERSION

Available also with external pilot vacuum supply

HIGH FLOW RATE

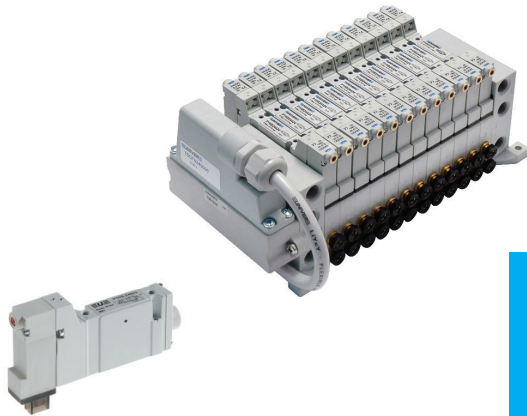
Up to 35000 NI/min (G1 1/2)



COMPACT VALVES

P10

10 mm - COMPACT Valves - For sub-base mounting

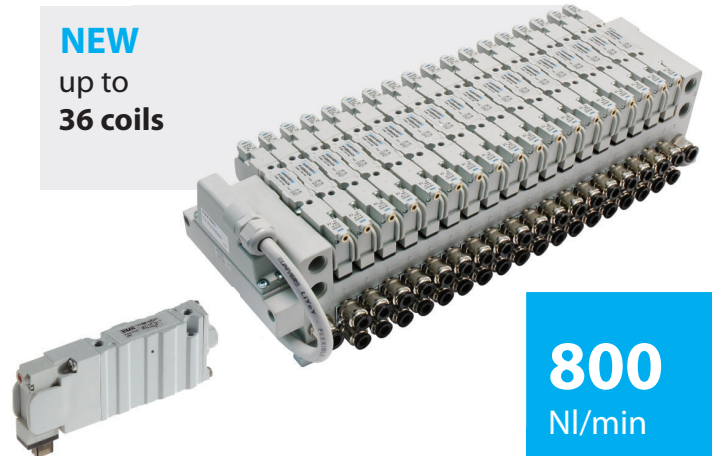


310
NI/min

P15

15 mm - COMPACT Valves - For sub-base mounting

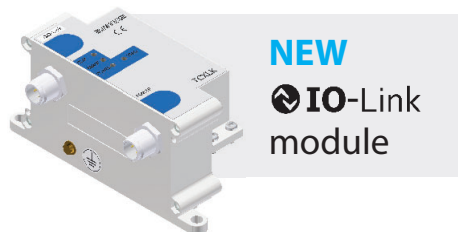
NEW
up to
36 coils



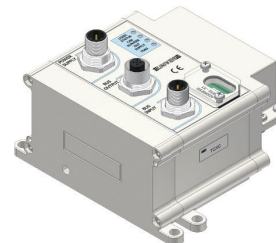
800
NI/min

COMMUNICATION SYSTEMS

TC



NEW
IO-Link
module



Serial
module

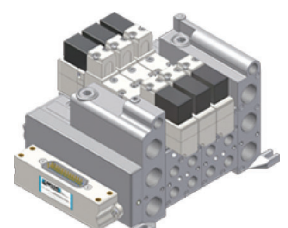
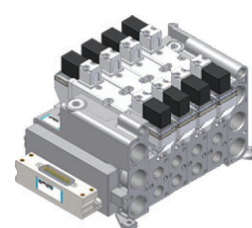
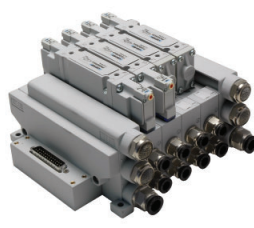
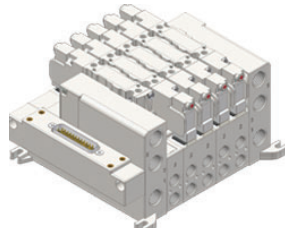
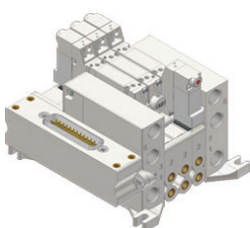
P10

P15

P22

BD18

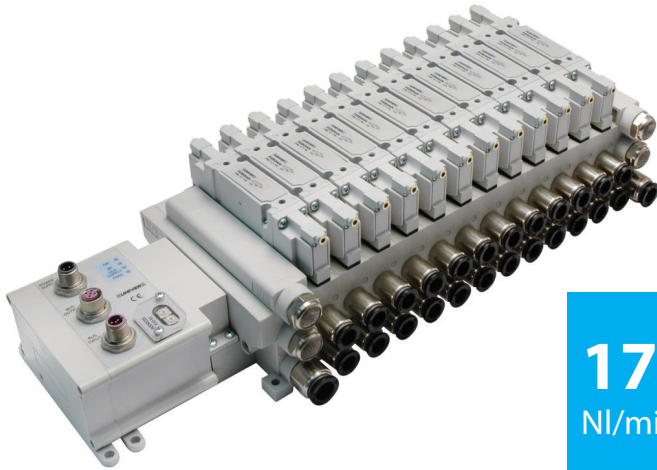
BD26



PNEUMATIC AUTOMATION

P22

22 mm - COMPACT Valves - For sub-base mounting



1700
NI/min

COMPACT Valves

P10/P15/P22

HIGH FLOW RATE

UNIVER traditional spool technology

COMPACT SIZE

Highest reduction of overall dimensions

EASY INSTALLATION

All pneumatic connections on the same side

COMPLETE SOLUTION

5/2 - 5/3 - 3/2+3/2

CANopen

EtherCAT[®]
Technology Group

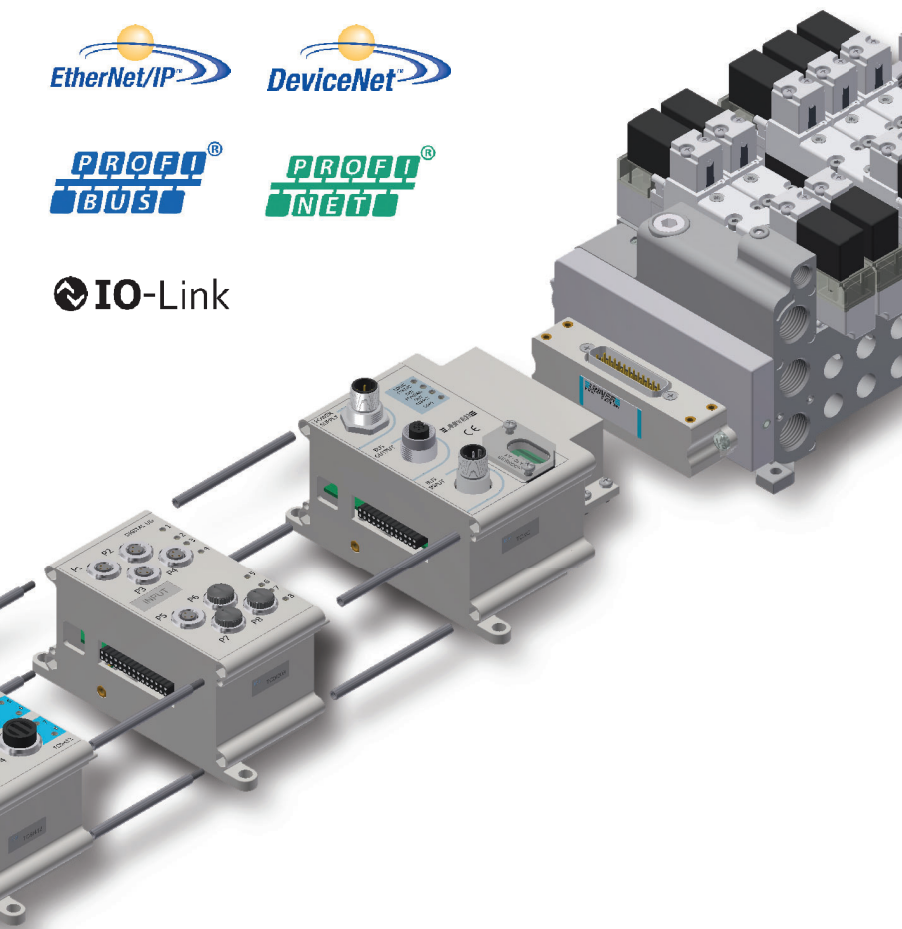
EtherNet/IP[®]

DeviceNet[®]

PROFI[®]
BUS

PROFI[®]
NET

IO-Link

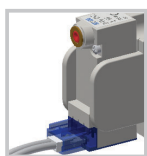
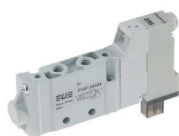


COMPACT VALVES

P10F/P10B

10 mm COMPACT Valves - M5

External connector

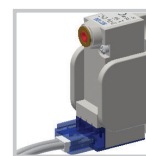


In-line
CONNECTOR

P15F/P15B

15 mm COMPACT Valves - G1/8

External connector

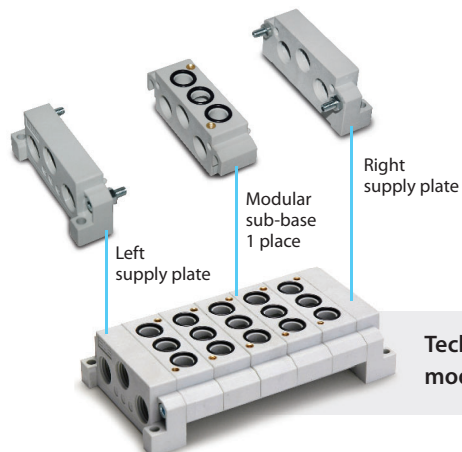
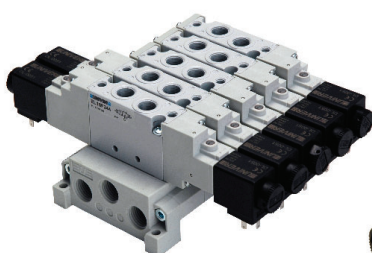


In-line
CONNECTOR

ESSENTIAL VALVES

EL18

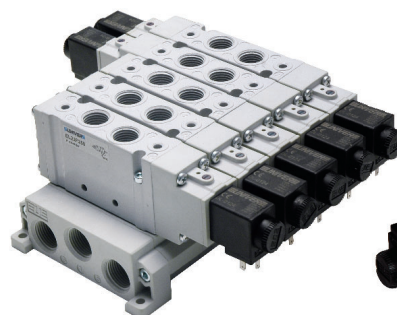
18 mm ESSENTIAL Valves - G1/8



Technopolymer
modular sub-base

EL22

22 mm ESSENTIAL Valves - G1/4



Aluminium sub-base
1 ÷ 10 positions

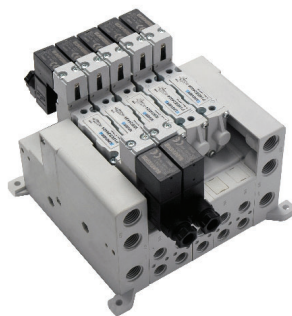
P15EF

15 mm COMPACT Valves - G1/8



P15EB

15 mm COMPACT Valves
For sub-base mounting



ESSENTIAL Valves

EL18/22

HIGH FLOW RATE

800 NI/min (G1/8) 1700 NI/min (G1/4)

REDUCED DIMENSIONS

18 mm (G1/8) 22 mm (G1/4)

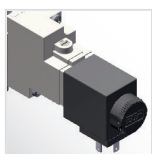
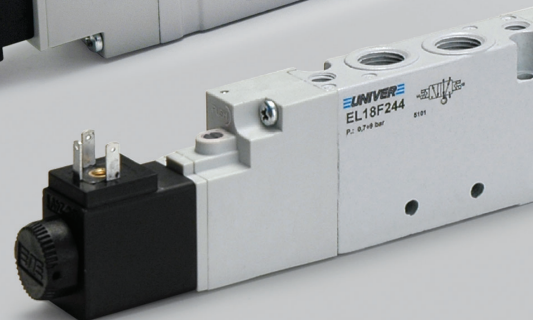
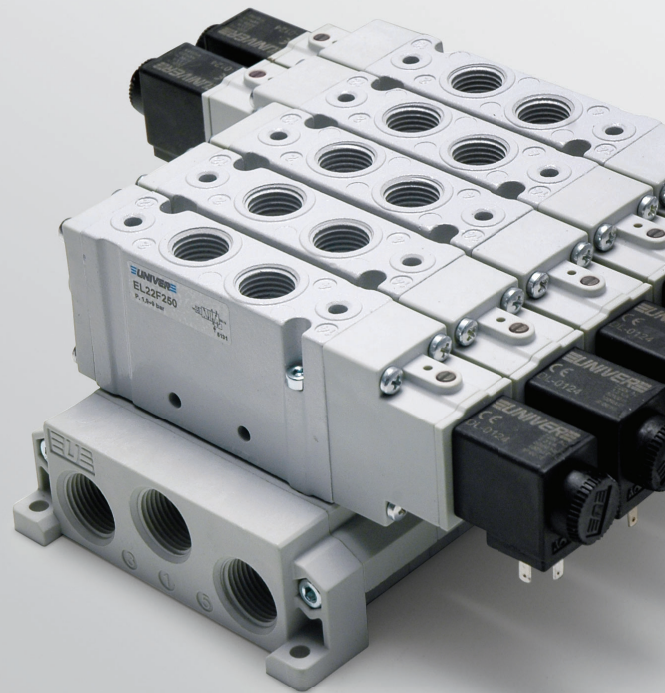
COMPLETE SOLUTION

Available versions

5/2 - 5/3 - 3/2+3/2

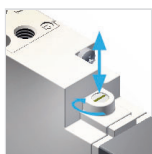
STRONG

Aluminium body



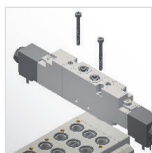
INTERCHANGEABLE U6 COIL

12 - 24 V DC
24 - 110 - 220 V AC



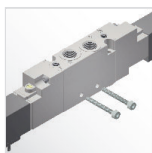
METALLIC MANUAL OVERRIDE (standard supplied)

Impulse and 1-2 positions



SUB-BASE MOUNTING

Easy installation by means
of 2 screws



INDIVIDUAL MOUNTING

Side holes on valve body



UNIVER TRADITIONAL SPOOL TECHNOLOGY

The dynamic spool guarantees
long service life and reliability

AIR TREATMENT UNITS

G1/4

Size 0



G1/4 - G3/8

Size 05

600
NI/min



1.500
NI/min

G3/8 - G1/2

Size 1



2.800
NI/min

G1/2

Size 2



4.300
NI/min

HZE-F

Filter
size 0-05-1-2



HZE-R

Regulator
size 0-05-1-2



HZE-L

Lubricator
size 0-05-1-2



HZE-B

Filter regulator
size 0-05-1-2



HZE-F

Filter
size 3



HZE-R

Regulator
size 3



HZE-L

Lubricator
size 3



HZE-B

Filter regulator
size 3



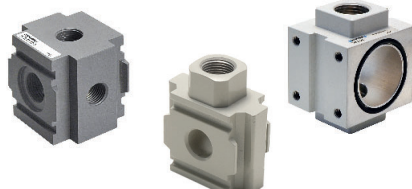
HZE-Y

Gradual starter
size 0-05-1-2



HZE-N

Diverter block
size 0-05-1-2-3



HZE-P

Lockable valve
size 0-05-1-2



HZE-S

Shut-off valve
size 0-05-1-2



G1

Size 3



10.000
NI/min

HZE-D

Filter regulator + Lubricator
size 0-05-1-2



HZE-C

Filter + Regulator + Lubricator
size 0-05-1-2



HZE-D

Filter regulator + Lubricator
size 3



HZE-C

Filter + Regulator + Lubricator
size 3



HZE0S

Size 0 U05



HZE1S

Size 05-1-2 U05



Size 05-1-2 U3 CNOMO



HZE

MODULAR

40 mm (HZE0) 50 mm (HZE05)

63 mm (HZE1) 80 mm (HZE2) 92 mm (HZE3)

INTEGRATED GAUGE

Standard supplied on size 0-05-1-2

COMPLETE SOLUTION

Possibility of assembling combinations
complete with accessories



AIR TREATMENT UNITS

HZE0R08G

Regulator without gauge
Size 0



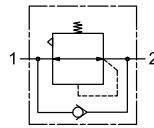
HZE-RL

Lockable regulator
Size 05-1-2



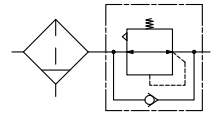
HZE-R

Check valve
Size 0-05-1-2



HZE-B

Check valve
Size 0-05-1-2



HZE1G / HZE2G

Coalescence purifier filters
Size 1-2



HZE1GD / HZE2GD

Oil separator filters with
activated carbon Size 1-2



HZ9NP40

HZE integrated digital
pressure switch



HZ9N_50

IP65 digital pressure switch
with connector



HZRE3

Electropneumatic proportional regulators G1/8 - G1/4 - G1/2



HZRS

Mini regulator G1/4



PNEUMATIC AUTOMATION

HZ9464G

Integrated square pressure gauge



HZ9P...

Round gauge



HZ9N

Digital pressure switch



HZRP30

Precision regulator G1/4



Filter Regulator with Digital Pressure Switch



FITTINGS AND TUBES

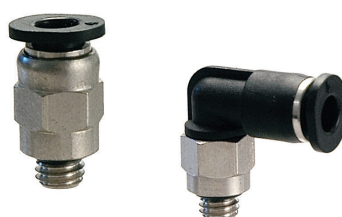
HA

Technopolymer Push-In Fittings



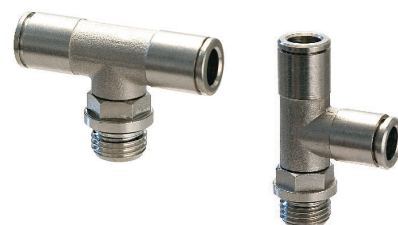
HAR

Space-saving Fittings



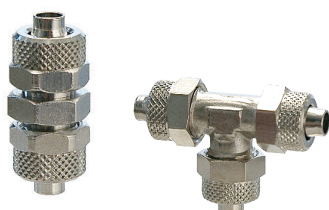
HB

Nickel-plated Brass Push-in Fittings



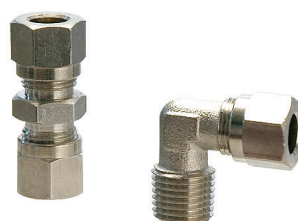
HGC

Push-on Fittings



HGO

Olive Compression Fittings



HGU

Quick Couplings for Compressed Air



COMPLEMENTARY VALVES AND ACCESSORIES

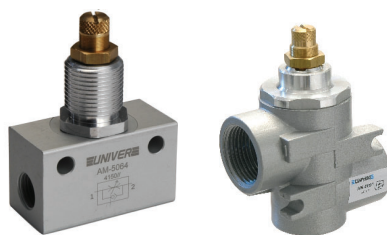
AP

Binary Counter (Flip Flop)



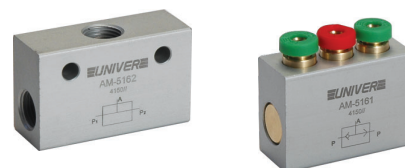
AM-50

Flow regulators with metallic body



AM-51

Signal processing valve



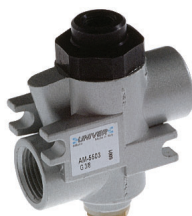
AM-54

Check valve



AM-55

Blocking valve



AM-5200

Pneumoelectrical transducer



AM-5220

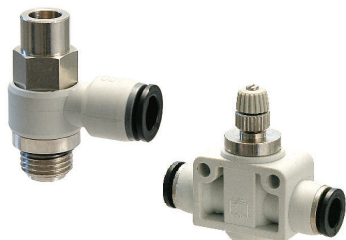
Adjustable pressure switch



PNEUMATIC AUTOMATION

HC

Fittings and Accessories with
pneumatic functions



HD

Standard fittings



HEA/HEC/HED

HEA Polyamide tubes
HEC Polyurethane tubes
HED Co-polyurethane tubes



HFA/HFC

HFA Polyamide Spiral Tubes
HFC Polyurethane Spiral Tubes



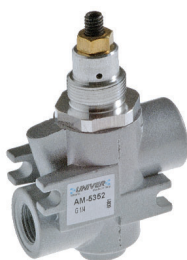
AM-52

Gradual starter



AM-53

Economizer



HZ9N12

Adjustable diaphragm
pressure switch

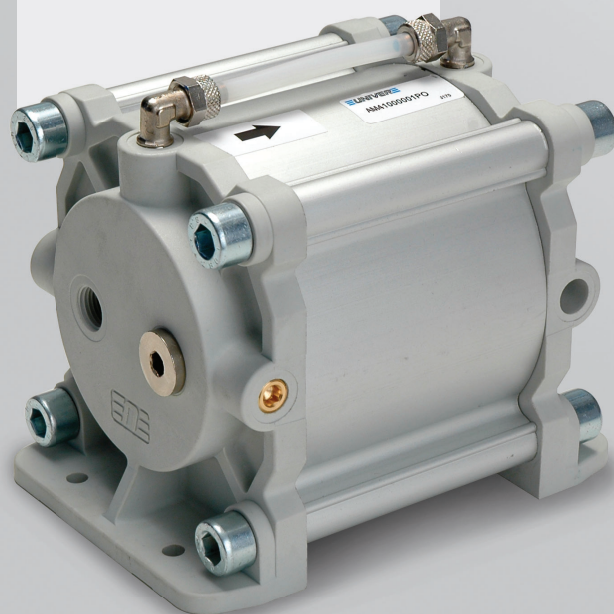


YF

G1/8 ÷ G1
Fluid Valves



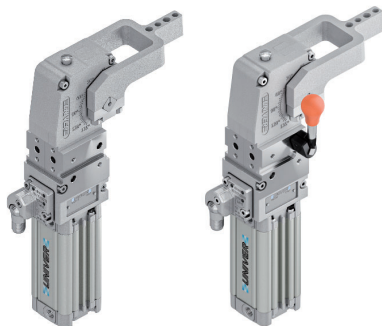
Air/Oil reservoir
AM4 series



POWER CLAMPS

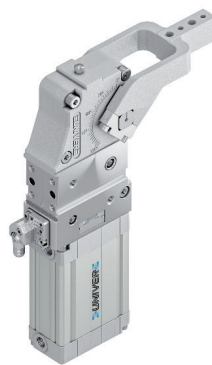
UCBP/UCBM

MINICLAMP Pneumatic Power Clamps
Ø25 - 32



UCBP/UCBH

UNICLAMP Pneumatic power clamps
Ø40 - 50 - 63 - 80



UCIP

UNICLAMP Pneumatic power clamps Ø40
interchangeable with size 50/63 mm



UCBM/UCBQ

UNICLAMP Pneumatic power clamps
with hand lever Ø40 - 50 - 63 - 80



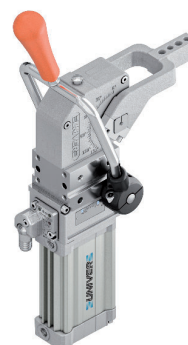
UCIM

UNICLAMP Pneumatic power clamps Ø40
with hand lever interchangeable with size
50/63 mm



UCBT

UNICLAMP Pneumatic power clamp Ø40
with central hand lever

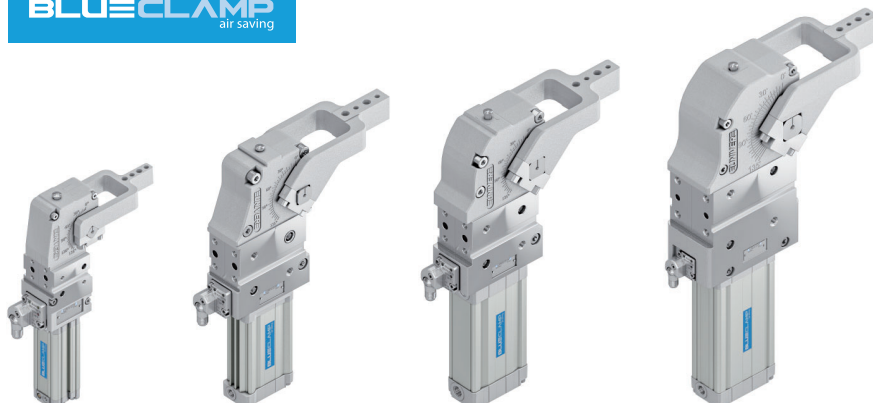


GRIPPER UNITS

UA

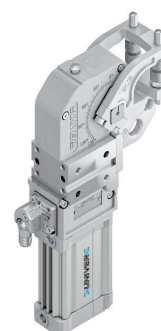
BLUECLAMP Pneumatic power clamps Ø32 - 40 - 50 - 63 - 80 - Air saving

BLUECLAMP
air saving



UGP

UNICLAMP Pneumatic gripper units Ø40



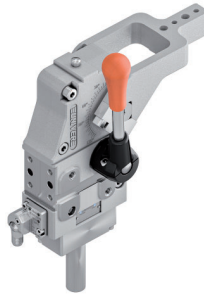
UCDP

UNICLAMP Pneumatic power clamps with 2 arms Ø40 - 63



UCBL

UNICLAMP Manual power clamps size 50/63



UCNP

UNICLAMP Pneumatic power clamps conforming to the N.A.A.M.S. Standard Ø50 - 63 - 80



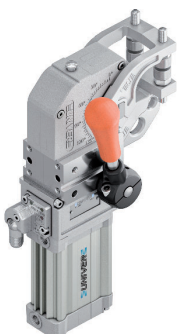
UCNM

UNICLAMP Pneumatic power clamps with hand lever conforming to the N.A.A.M.S. Standard Ø50 - 63 - 80



UGM

UNICLAMP Pneumatic gripper units with hand lever Ø40



UGPS

UNICLAMP Pneumatic grippers Ø32 - 40



UNICLAMP
 next generation

UC

NEW OPTICAL SENSOR DF-K

Metal-body with M12 swivel connector

LIGHTWEIGHT

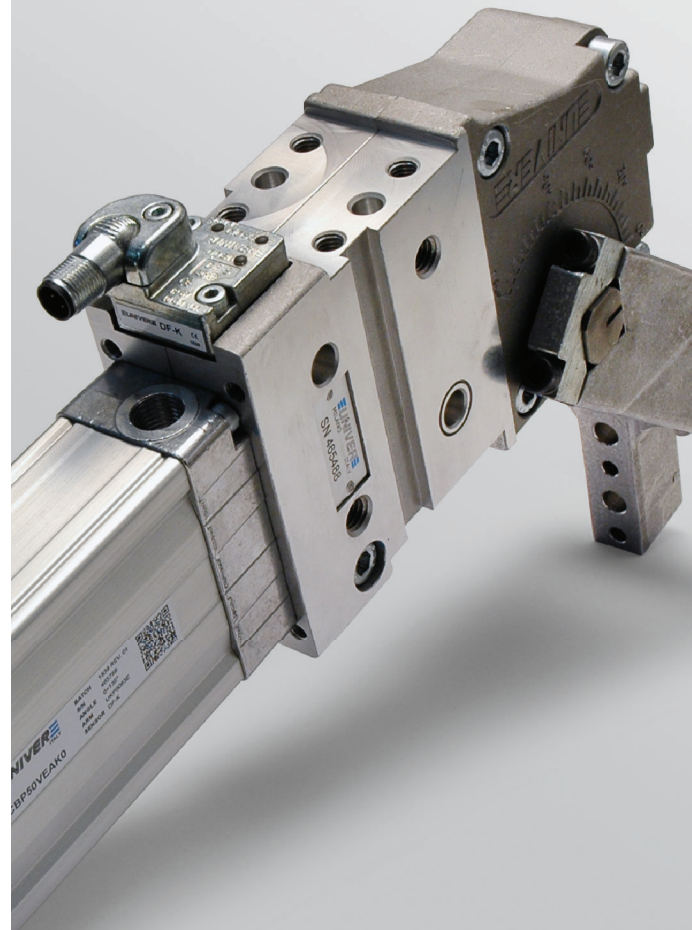
Housings in aluminium alloy

INTEGRATED COMPENSATION








Compensating thickness variations up to 2,9 mm
 High repeatability

STEPLESS ADJUSTABLE OPENING ANGLE

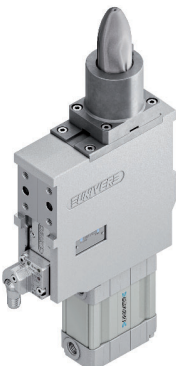



0° ÷ 135°



RETRACTABLE LOCATING PIN UNITS

ULP	LCG	ULB	ULZ
UNICLAMP Pneumatic retractable locating pin units with single rod Ø32 - 50 - 63	Pneumatic retractable locating pin units with single rod, conforming to the CNOMO standard Ø50 - 63	UNICLAMP Pneumatic retractable locating pin units with double guide and rear sensor Ø32	UNICLAMP Pneumatic retractable locating pin units with single rod and toggle-joint mechanism Ø40
			
ULM	ULY	ULO	
UNICLAMP Pneumatic retractable locating pin unit with single rod and hand lever Ø50	UNICLAMP Pneumatic retractable locating pin unit with single rod, hand lever and toggle-joint mechanism Ø40	UNICLAMP Pneumatic retractable locating pin unit with orientable double rod and hand lever Ø50	
			

PIN CLAMPS

<p>USP/USS</p> <p>UNICLAMP Pneumatic pin clamps</p> 	<p>USC/USR</p> <p>UNICLAMP Compact pin clamps</p> 	<p>USP50U</p> <p>UNICLAMP Pneumatic pin clamps horizontal shape</p> 	<p>USSL</p> <p>UNICLAMP Pneumatic pin clamps for laser beam applications</p> 
--	--	---	---

ULA

UNICLAMP Pneumatic retractable locating pin units with orientable double rod Ø40 - 63



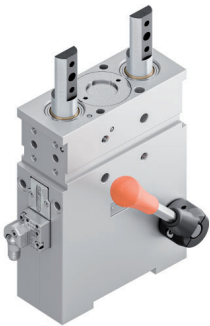
ULT

UNICLAMP Pneumatic retractable locating pin units with orientable double rod and toggle-joint mechanism Ø50



ULX

UNICLAMP Pneumatic retractable locating pin unit with orientable double rod, hand lever and toggle-joint mechanism Ø50



ULL

UNICLAMP Manual retractable locating pin unit with single rod, size 50



UST

UNICLAMP Pneumatic pin clamps with vanishing hook



LUP

Pneumatic pin clamps with vanishing hook and pin



USL

UNICLAMP Manual pin clamps



USP/USS

NEW OPTICAL SENSOR DF-K

INTEGRATED COMPESATION

Size 50 up to 2,3 mm

Size 63 up to 6 mm

ORIENTABLE HOOK

0°/180°

IRREVERSIBLE

UNIVER original toggle-joint system

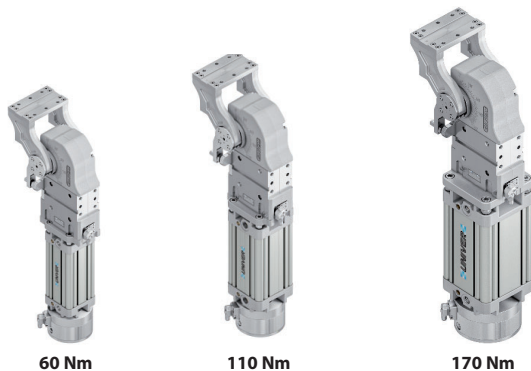
DOUBLE METAL SCRAPER



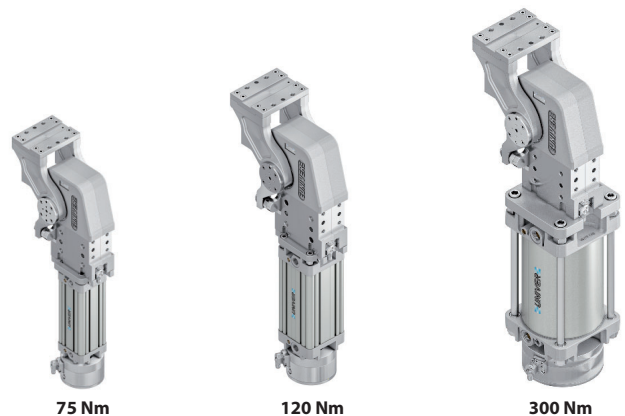
POWER PIVOTS - WITH BRAKE

UAGP_B

SMALL SIZE (60 - 110 - 170 Nm)



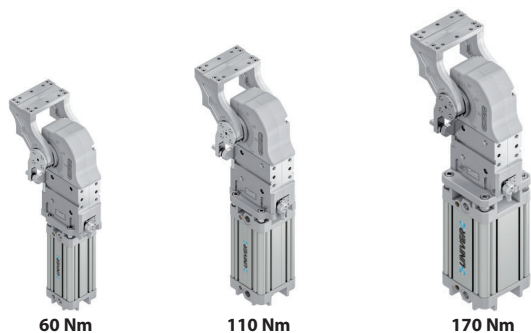
MEDIUM SIZE (75 - 120 - 300 Nm)



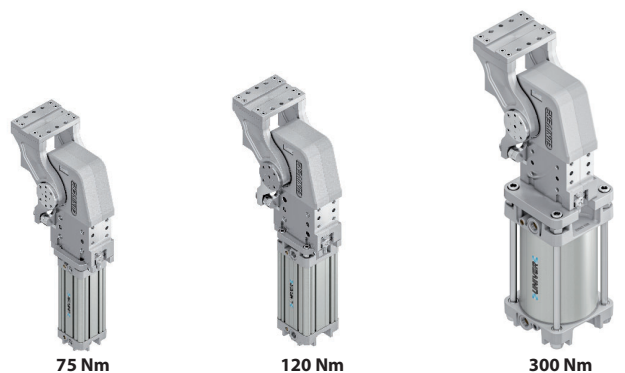
POWER PIVOTS - WITHOUT BRAKE

UAGP_W

SMALL SIZE (60 - 110 - 170 Nm)



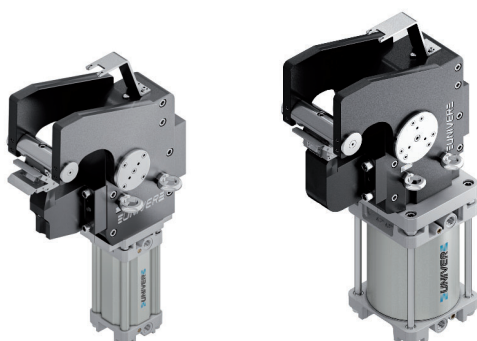
MEDIUM SIZE (75 - 120 - 300 Nm)



MARKING UNITS

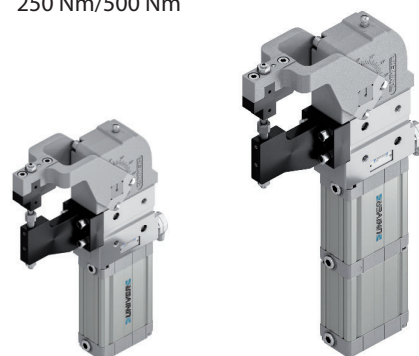
UPR

UNICLAMP Marking unit with marking head 5000 Nm/12000 Nm



UPD

UNICLAMP Marking unit 1 character
250 Nm/500 Nm



ATEX
Certified products
Available on request

AUTOMOTIVE

LARGE SIZE (210 - 350 - 600 Nm)



210 Nm



350 Nm

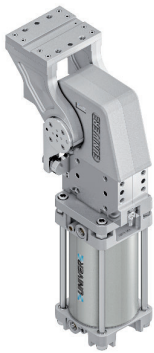


600 Nm

LARGE SIZE (210 - 350 - 600 Nm)



210 Nm



350 Nm



600 Nm

UAGP

Pneumatic Power Pivot



ELECTRIC UNITS

LAE

Electric power clamps



LNE

Electric power clamps, fixing conforming to the N.A.A.M.S. Standard



LGE

Electric gripper units



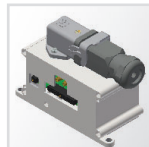
MODULAR CONTROL SYSTEM

TC-E

Control system for electric clamping units



SERIAL COMMUNICATION SYSTEM



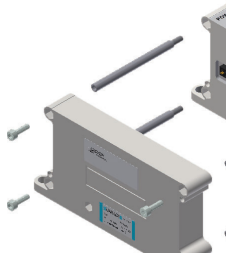
POWER UNIT
EFFICIENT power management



ELECTRIC UNIT DRIVER
Control module for 2 clamping units
Max 8 electric devices



FLEXIBLE
Compatible with I/O modules and valve manifolds



UAEP

ePIVOT Electric Power Pivot



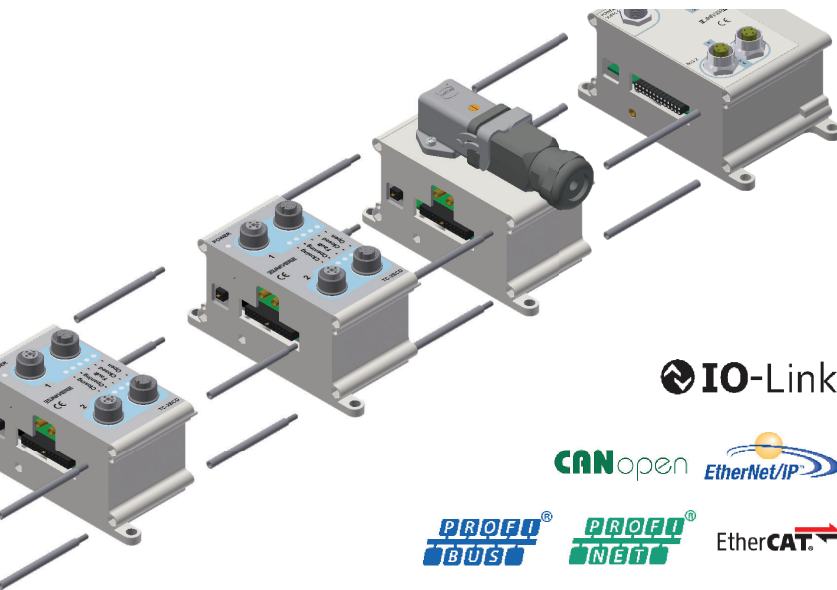
100% **PLUG- N-PLAY**
CONSTANT TORQUE
PROGRAMMABLE PIVOTING ANGLE 0-360°
MULTIPOSITION TABLE
SMART CONNECTIVITY
ENERGY SAVING
SELF LOCKING
INTERCHANGEABLE WITH PNEUMATIC PIVOTS

ePIVOT
electric power

AUTOMOTIVE

LCE

Electric retractable locating pin units



IO-Link

CANopen EtherNet/IP

PROFI[®] BUS PROFI[®] NET EtherCAT[®]

eCLAMP
electric power

LAE

Electric power clamps

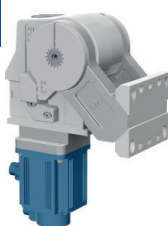


CUSTOMER ORIENTED DESIGN

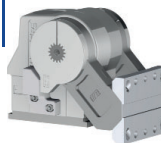
100% UNIVER
Plug-n-Play



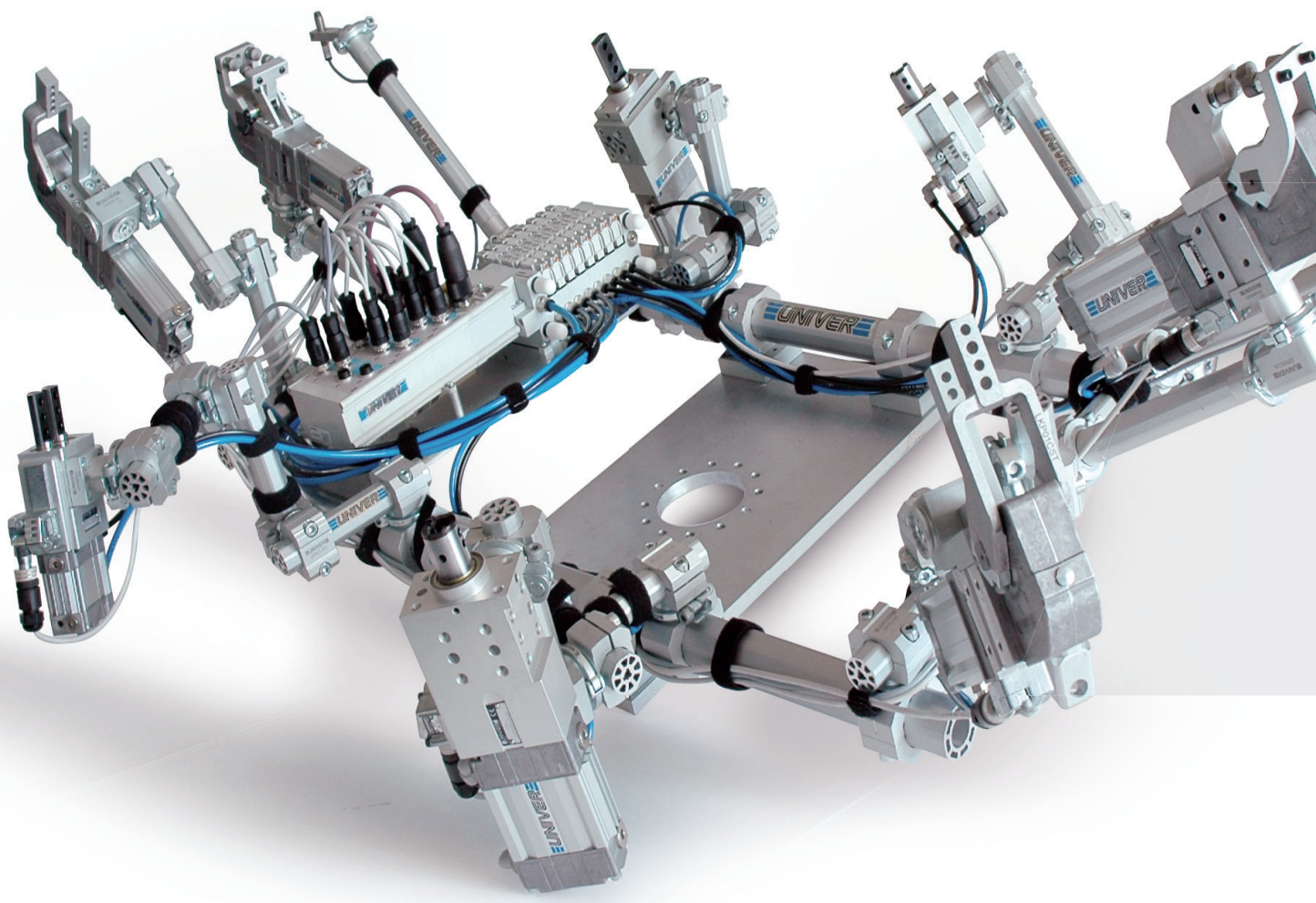
CUSTOMER-SELECTED
MOTOR



MOTORLESS

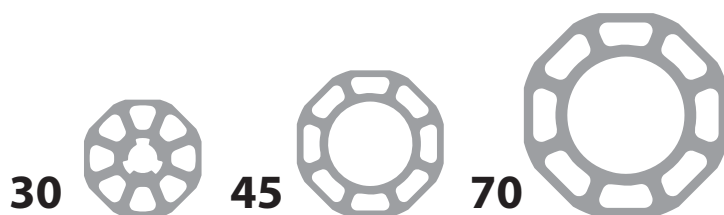


GR8 MODULAR TOOLING SYSTEM



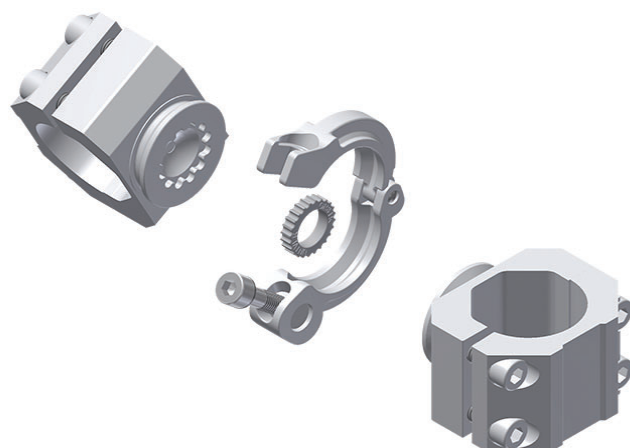
Ø 30 - 45 - 70 mm BOOMS

Maximum stiffness and minimum weight

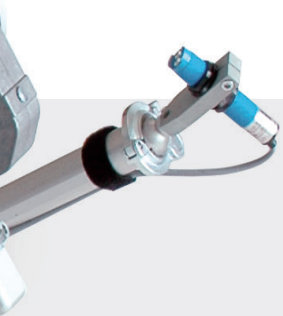


LOCKING RING

Precise and efficient system to guarantee a high level of positional accuracy



MODULAR TOOLING SYSTEM



HIGH PRECISION

High level of positional repeatability;
low deflection

MODULAR COMPONENTS

Considerable reduction of mounting components

QUICK INSTALLATION AND SET UP

No welding or doweling required,
easily replaceable components

FULLY ADJUSTABLE

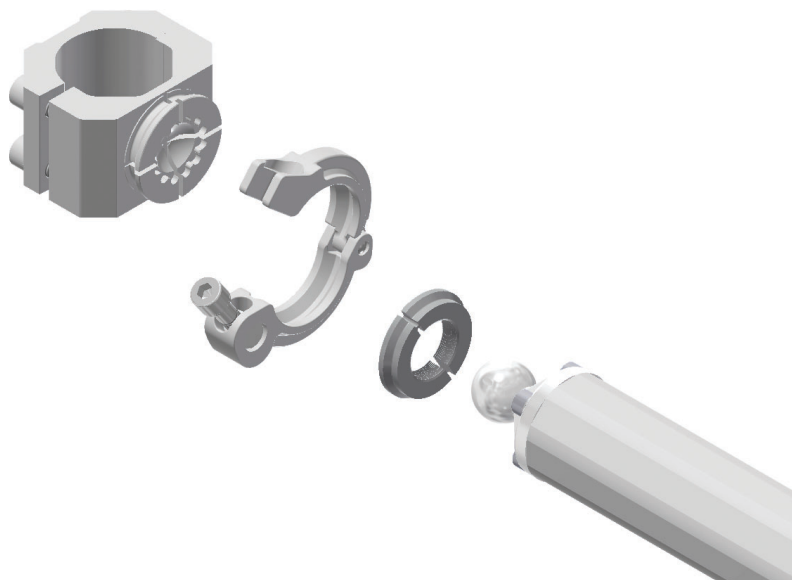
Unlimited orientation in space and free configurations

UNIVER Original

NEW

BALL MOUNTING

Unlimited swivel rotation













KIT

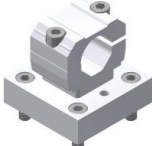

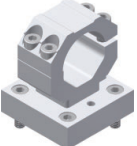

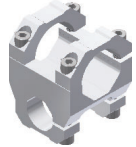

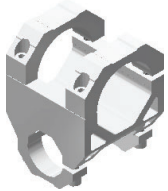

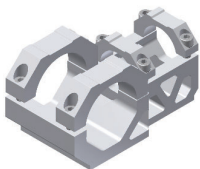
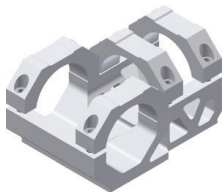
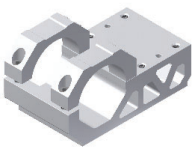
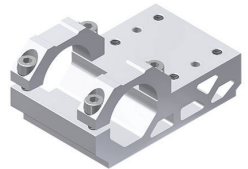
Considerable reduction
of mounting elements



BOOMS AND BOOM ADAPTERS

GR8B30S6000 Octagonal boom Ø30 mm	GR8B456000 Octagonal boom Ø45 mm	GR8B706000 Octagonal boom Ø70 mm	GR8C30 Boom end-cap Ø30 mm	GR8C45 Boom end-cap Ø45 mm
				
GR8IK Interlocking key insert	GR8SCI30C Interlocking end 30 for ball mounting	GR8SCI30D Interlocking end 30 D	GR8ECI45C Interlocking end 45 for ball mounting	GR8ECI45D Interlocking end 45 D
		 200 Nm		 200 Nm

FRAME COMPONENTS

GR8BB30 Base plate 30	GR8BB30A Joint 30 without base	GR8BB45 Base plate 45	GR8BB45A Joint 45 without base
			
GR8HD4530V Joint 45-30	GR8HD4545V Joint 45-45	GR8HD7045 Joint 70-45	GR8HD7070 Joint 70-70
			
GR8CM7045 Coplanar Mount 70-45	GR8CM7070 Coplanar Mount 70-70	GR8BL45 Base linear plate 45	GR8BL70 Base linear plate 70
			

MODULAR TOOLING SYSTEM

GR8C70

Boom end-cap
Ø70 mm



GR8LH

Locking ring



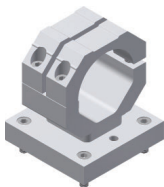
GR8LHD

Locking ring D



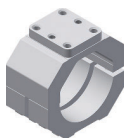
GR8BB70

Base plate 70



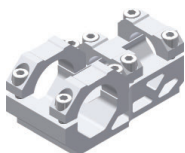
GR8BB70A

Joint 70 without base



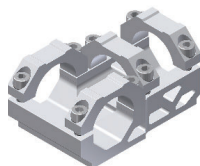
GR8CM4530

Coplanar Mount 45-30



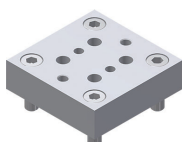
GR8CM4545

Coplanar Mount 45-45

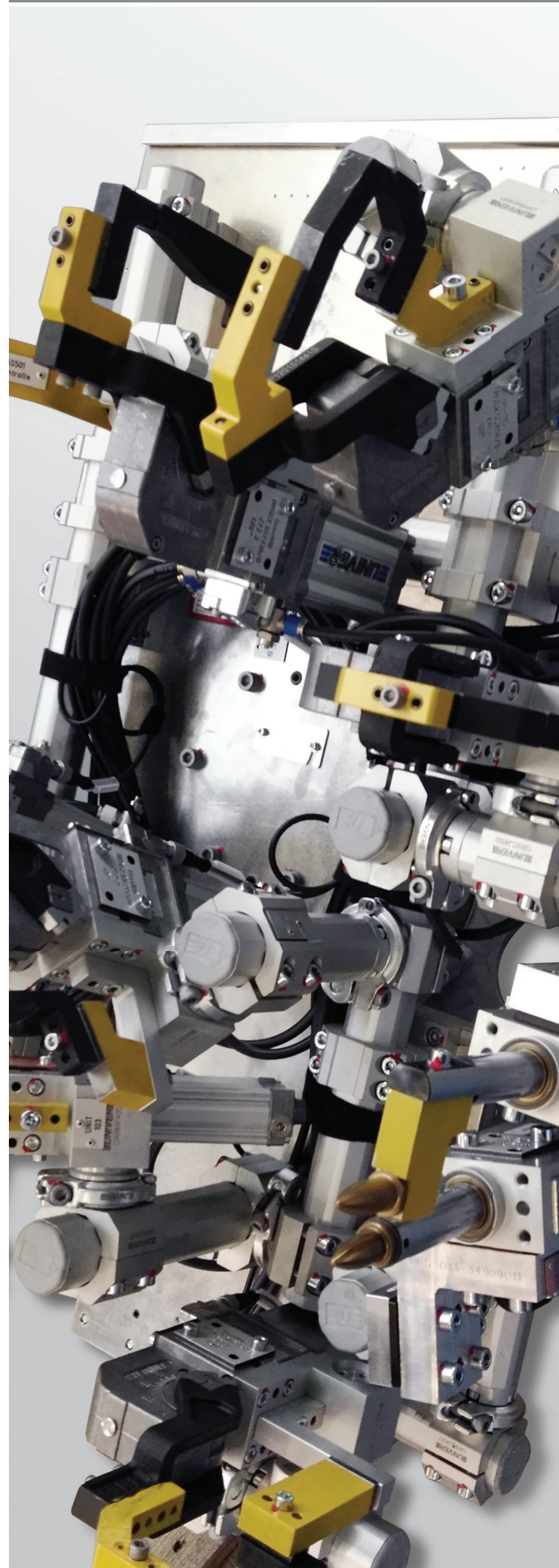


GR8BB4530B

Base plate



Max static load



JOINT

GR8BC30

30 base connector



GR8BC45

45 base connector



GR8BC70

70 base connector



GR8CJ30C

Cross Joint 30
for ball mounting



GR8CJ45D

Cross Joint 45 D



200
Nm

GR8CJ70C

Cross Joint 70
for ball mounting



GR8CJ70D

Cross Joint 70 D



200
Nm

GR8CJD30C

Double cross joint 30
for ball mounting



GR8CJD45D

Double cross joint 45 D



200
Nm

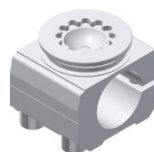
GR8RJ30C

Round Joint 30
for ball mounting



GR8RJ30D

Round Joint 30 D



200
Nm

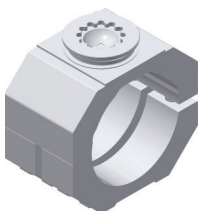
GR8RJ45C

Round Joint 45
for ball mounting



GR8RJ70D

Round Joint 70 D



200
Nm

GR8R3025

Adapter octagon 30
to round 25



GR8R4540

Adapter octagon 45
to round 40



200
Nm

Max static load

MODULAR TOOLING SYSTEM

GR8CJ30D

Cross Joint 30 D



200
Nm

GR8CJ45C

Cross Joint 45
for ball mounting



GR8CJD30D

Double cross joint 30 D



200
Nm

GR8CJD45C

Double cross joint 45
for ball mounting



GR8RJ45D

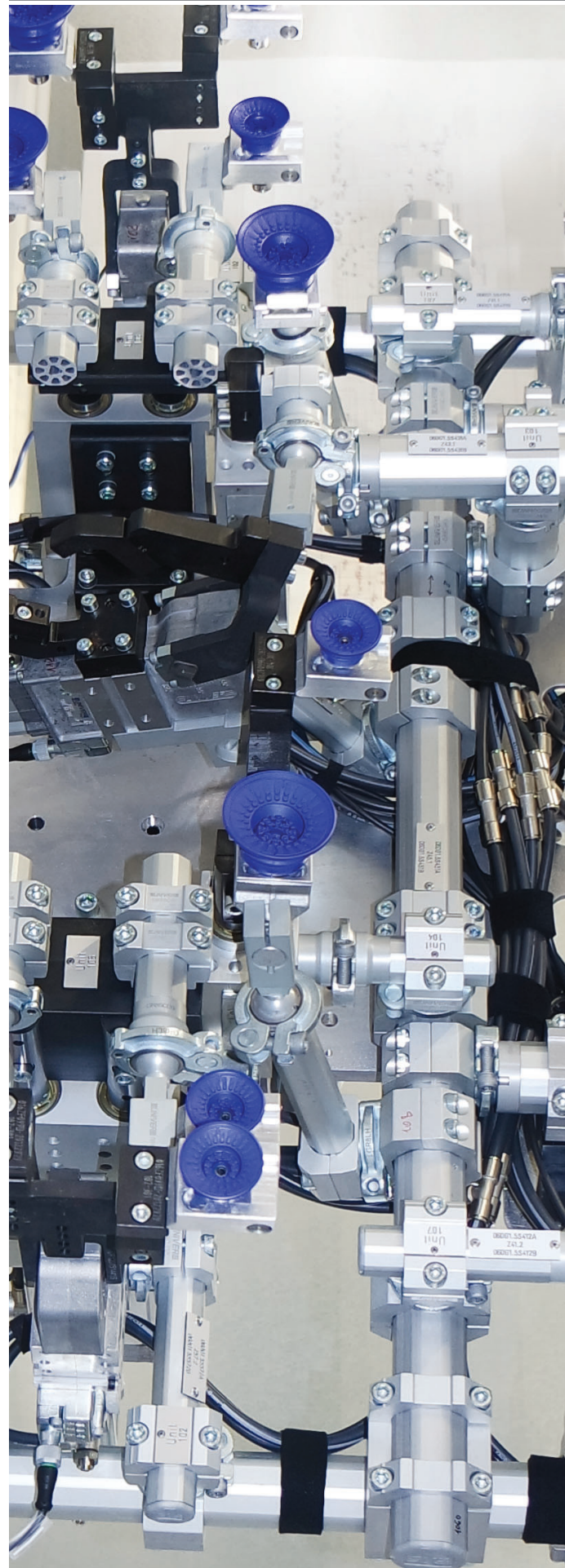
Round Joint 45 D



200
Nm

GR8RJ70C

Round Joint 70
for ball mounting



ANGLE ADAPTERS

GR8A30D

Edge mount orientable
side for 30 mm boom D



200
Nm

GR8A45D

Edge mount orientable
side for 45 mm boom D



200
Nm

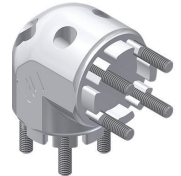
GR8SM3030

Edge mounting 30-30



GR8SM4545

Edge mounting 45-45



BALL ADAPTERS

GR8MP12

Proximity mount 12 mm



GR8MP18

Proximity mount 18 mm



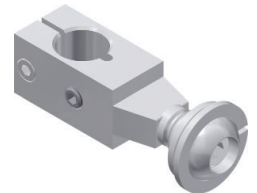
GR8MP30

Proximity mount 30 mm



GR8MP19

Vacuum cup adapter



LGPS ADAPTERS

LGP32MO25

Orbital mount 360°,
ball Ø25 mm for LGPS32



LGP32MO30

Orbital mount 360°,
ball Ø30 mm for LGPS32



LGP32MP

Middle flange mount
for LGPS32



LGP40MO25

Orbital mount 360°,
ball Ø25 mm for LGPS40



LGP40MO45

Orbital mount 360°,
ball Ø45 mm for LGPS40



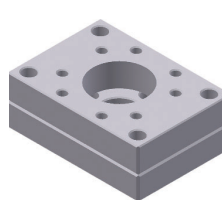
LGP40MP

Middle flange mount
for LGPS40



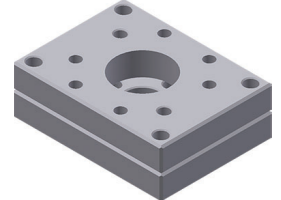
LGP32PT070

Rear flange mount 70 mm
for LGPS32



LGP40PT080

Rear flange mount 80 mm
for LGPS40



MODULAR TOOLING SYSTEM

200
Nm

Max static load

GR8SCB30

Ball mount 30



GR8SCB45

Ball mount 45



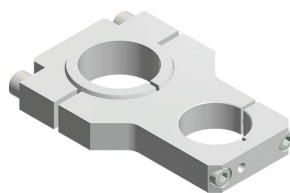
LGP40MO30

Orbital mount 360°,
ball Ø30 mm for LGPS40



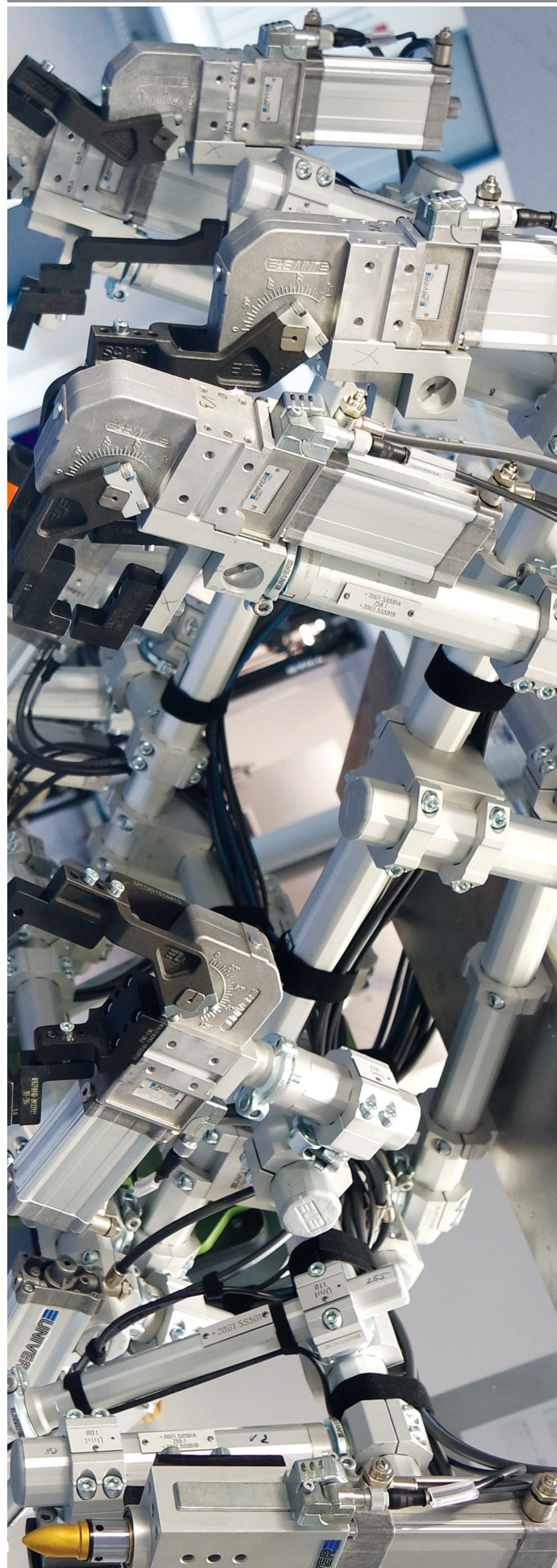
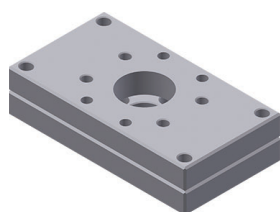
LGP40MO40

Orbital mount 360°,
ball Ø40 mm for LGPS40



LGP40PT110

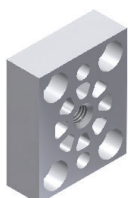
Rear flange mount 110 mm
for LGPS40



REAR MOUNT PLATES

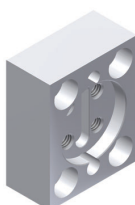
GR8SR40

Rear mount plate
for clamps size 40



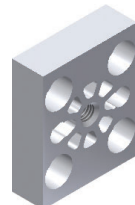
GR8SR40D

Rear mount plate D
for clamps size 40



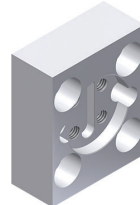
GR8SR50

Rear mount plate
for LCP50



GR8SR50D

Rear mount plate D
for LCP50



GR8SB4530

Rear mount plate



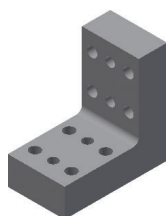
GR8SB4530M8

Rear mount plate
with M8 threads



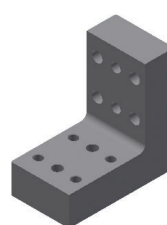
GR8SSLC

Flange mount for LCP



GR8SSLCM8

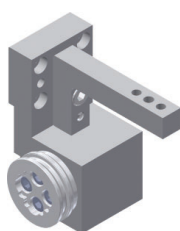
Flange mount for LCP
with M8 threads



FRONT MOUNT PLATES

GR8MF40D

Front mount plate D
for clamps size 40



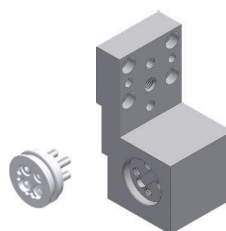
GR8RMF4050AD

Interlocking adapter
for GR8MF40D, GR8MF50D,
GR8MFGLD



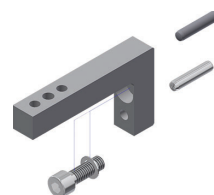
GR8MF40PD

Mount plate
for GR8MF40D



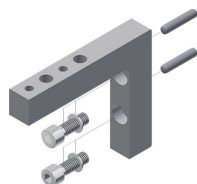
GR8RMF40C

Mount flange angle
for GR8MF40D



GR8RMF50C

Mount flange angle
for GR8MF50D



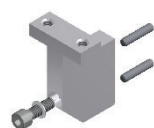
GR8MFGLD

Front mount plate D
for UGP gripper



GR8MFGLC

Counter mount
for GR8MFGLD



MODULAR TOOLING SYSTEM

GR8SR50M8

Rear mount plate with M8 threads
for clamps size 50/63



GR8SR50M8D

Rear mount plate D with M8 threads
for clamps size 50/63



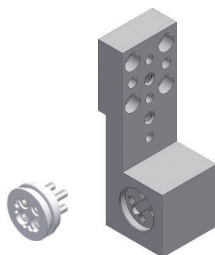
GR8MF50D

Front mount plate D
for clamps size 50/63



GR8MF50PD

Mount plate
for GR8MF50D



RISERS

GR8SK30/45/70

Riser size 30-45-70



Compliance with International Standards

DIRECTIVE 2014/34 EU "ATEX"

Directive that specifies the safety requirements for equipment/components for use in potentially explosive atmospheres

PRODUCT CERTIFICATION "CSA/UL"
Nr. 24 48884
Nr. LR 113373-1

Product Safety certification for the North American market (United States - Canada)

DIRECTIVE 2011/65/EU "RoHS"

Directive which regulates the use and disposal of hazardous substances in electrical and electronic equipment and their waste disposal.

DIRECTIVE 2012/19/EU "WEEE"

Directive on waste electrical and electronic equipment.

DIRECTIVE "REACH"

EC 1907/2006 of the European Parliament and the Council concerning the Registration, Evaluation, Authorisation and Restriction of Chemicals.

DIRECTIVE 97/23/EC "PED"

Directive which applies to the design, manufacture and conformity assessment of pressure equipment and assemblies with a maximum allowable pressure greater than 0.5 bar.

DIRECTIVE 2006/42/EC "MACHINERY"

Directive defining essential health and safety requirements for the design, construction, installation and maintenance of machinery.

ISO 9001:2015
"QUALITY MANAGEMENT SYSTEM"

Standard specifying Quality Management System requirements.



For further information contact our Sales Office or visit our website
www.univer-group.com



Industrial Automation

UNIVER S.p.A.

Headquarters

20128 **Milano**
Via Eraclito, 31
Tel. +39 02 25298.1
Fax +39 02 2575254
info@univer-group.com
www.univer-group.com

UNIVER SERVICE S.r.l.

Headquarters

20128 **Milano**
Via Empedocle, 20
Tel. +39 02 25298.1
Fax +39 02 25298370
universervice@universervice.it
www.universervice.it

Branch Offices

LOGISTICS CENTER NORD ITALIA

20128 - **Milano**
Via Empedocle, 20
Tel. +39 02 25298.1
Fax +39 02 25298370
milano@universervice.it

LOGISTICS CENTER CENTRO-SUD ITALIA

40069 Zola Predosa **Bologna**
Via Balzani, 5
Tel. +39 051 753907
Fax +39 051 6184751
bologna@universervice.it

UNIVER DO BRASIL Ltda

BRAZIL- 13474-764
Americana **São Paulo**
Rua do Polyester, 29
Distrito Industrial Abdo Najar
Tel. +55 19 3113-9400
atendimento@univer.com.br

UNIVER CHINA

CHINA - Shanghai
399 Fu Te North Road,
Free Zone, Pudong
Tel. +86 21 58467180
Fax +86 21 58467180
info@univer-china.com

UNIVER FRANCE S.a.s.

FRANCE - 68000
Colmar
1, rue Denis Papin
Tel. +33 03 89210900
Fax +33 03 89216850
info@univer-france.fr

UNIVER G.m.b.H.

GERMANY - D-65428
Rüsselsheim
Eisenstraße 51
Tel. +49 6142 40832 0
Fax +49 6142 40832 90
info@univer-gmbh.de

UNIVER NORTH AMERICA

USA - 48083
Troy - Michigan
1904 Woodslee DR
Tel. +1 248 299 0525
Fax +1 248 299 0528
info@univer-group.us

UNIVER POLSKA Sp. z o.o.

POLAND - 25-663
Kielce
ul. K. Olszewskiego 21E
Tel. +48 41 278 72 53
Fax +48 41 278 72 54
univer@univer-group.pl

UNIVER S.L.

SPAIN - 08210
Barbera Del Valles **Barcelona**
Ronda Industria, 26 - 28
Tel. +34 93 7297360
Fax +34 93 7297380
univer@univerweb.com

Distributors worldwide:

Get in touch with UNIVER Sales Department
or visit our website www.univer-group.com



www.univer-group.com