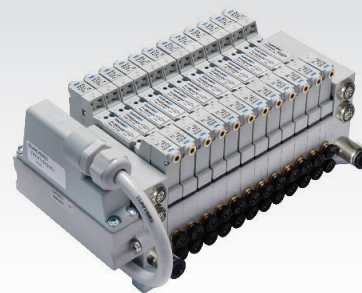


CHARACTERISTICS

Ambient temperature	-5 ÷ +50 °C
Fluid	10 µm filtered air, with or without lubrication
Commutation system	spool
Max pressure	7 bar (electrical control) 10 bar (pneumatic control)
Connections	M5 (P10F) - M5, M7, tube Ø 4 (P10B)
Nominal flow rate (NI/min)	310 (5/2) 230 (5/3) 250 (3/2+3/2)
Valve body	zamak
Seals	NBR
Electropilot	B10 (0,3W) - B11 (1 W)
Spool	aluminium
Voltage	24 V DC (± 10%)
Power consumption	B10 = 0,3 W, Speed-up 1,3 W (25 ms) B11 = 1 W
Protection degree	IP65
Manual override	recessed button - 1 position



CODIFICATION KEY

P	1	0	F	2	4	4	2	4		
---	---	---	---	---	---	---	---	---	--	--

1	2	3	4	5	6	7
---	---	---	---	---	---	---

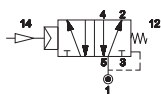
1 Series	2 Type	3 Control 14	4 Return 12
P10F = Threaded body P10B = Body for sub-base	2 = 5/2 6 = 3/2+3/2 NC-NC 3 = 5/3 c.c. 7 = 3/2+3/2 NC-NO 4 = 5/3 o.c. 8 = 3/2+3/2 NO-NO 5 = 5/3 p.c.	3 = Pneumatic amplified 4 = Electrical amplified 90° (0,3W) 6 = Electrical amplified 90° (1W)	0 = Pneumomechanical spring 1 = Mechanical spring 3 = Pneumatic amplified 4 = Electrical amplified 90° (0,3W) 6 = Electrical amplified 90° (1W)
5 Voltage	6 Option	7 ATEX Option	
24 = 24 V DC	D = External pilot supply on valve body (P10 = M3)	X = Atex (upon request)	

See ATEX Catalogue for types and versions

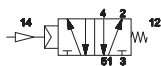
c.c. = closed centres o.c. = open centres p.c. = pressurized centres

Pneumatic impulse - Threaded connections M5

Single impulse

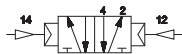


P10F230



P10F231

Double impulse



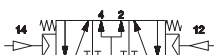
P10F233



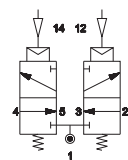
P10F333



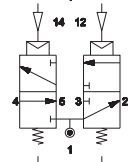
P10F433



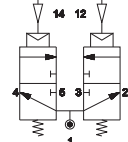
P10F533



P10F633



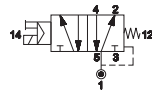
P10F733



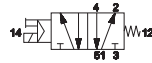
P10F833

Electrical impulse - Threaded connections M5

Single impulse

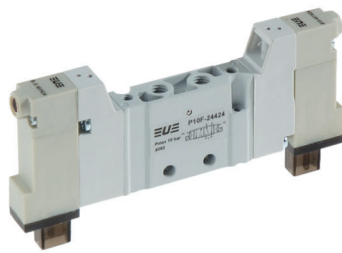


P10F24024 0,3 W
P10F26024 1 W

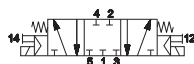


P10F24124 0,3 W
P10F26124 1 W

Double impulse



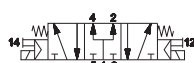
P10F24424 0,3 W
P10F26624 1 W



P10F34424 0,3 W
P10F36624 1 W



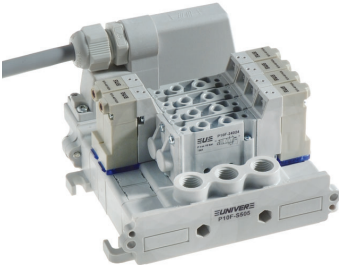
P10F44424 0,3 W
P10F46624 1 W



P10F54424 0,3 W
P10F56624 1 W

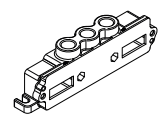
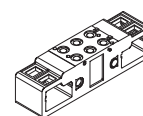
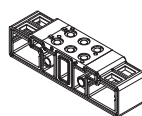
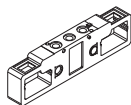
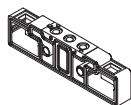
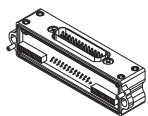
<p>■ B10</p> <p>Low power consumption 0,3 W</p>	<p>■ B11</p> <p>Standard 1 W</p>
---	----------------------------------

Integrated electrical connection - Threaded connections M5



Configuration 25p conn.
max 12 bistable

TIM1024 P10SF100 P10SF110 P10SF200 P10SF210 P10SF500



male connection module
25 poles, type sub-D

sub-base 1 place

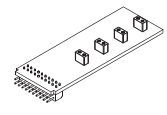
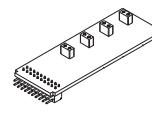
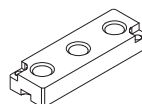
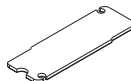
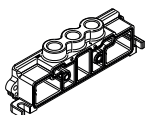
sub-base 1 place
1-3-5 closed

sub-base 2 places

sub-base 2 places
1-3-5 closed

left supply plate G1/8
for TIM module

P10SF505 P10SF550 P10SF560 P10SF570 P10SS14**M P10SS12**M



right supply plate G1/8

pressure separator

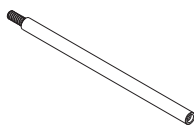
closing plate for unused
valve place

intermediate supply plate
for threaded version

bus connection card,
side 14
** = 04, 06, 08, 10, 12 places

bus connection card,
side 12
** = 04, 06, 08, 10, 12 places

P10STR01 P10STR02 P10STR05



modular tie-rods
1 valve place

modular tie-rods
2 valve places

modular tie-rods
5 valve places

AZ4-SN003A

No. 100 nuts M3 for tie-rods

AZ4-VN0310

No. 100 screws M3x10 for tie-rods

Electrical connection with external connector - Threaded connections M5

3



P10SF300	P10SF310	P10SF400	P10SF410	P10SF515	P10SF550
sub-base 1 place	sub-base 1 place 1-3-5 closed	sub-base 2 places	sub-base 2 places 1-3-5 closed	right/left supply place G1/8	pressure separator
P10SF560	P10SF570	P10STR01	P10STR02	P10STR05	
closing plate for unused valve place	intermediate supply plate for threaded version	modular tie-rods 1 valve place	modular tie-rods 2 valve places	modular tie-rods 5 valve places	

AZ4-SN003A

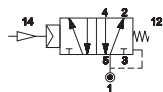
No. 100 nuts M3
for tie-rods

AZ4-VN0310

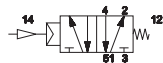
No. 100 screws M3x10
for tie-rods

Pneumatic impulse - Body for sub-base mounting

Single impulse



P10B230

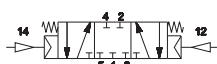


P10B231

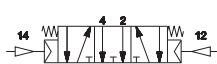
Double impulse



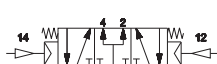
P10B233



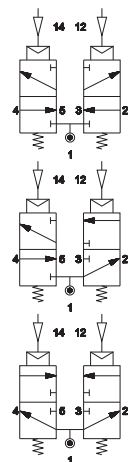
P10B333



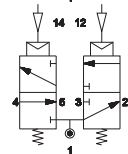
P10B433



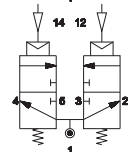
P10B533



P10B633



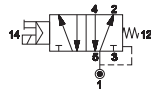
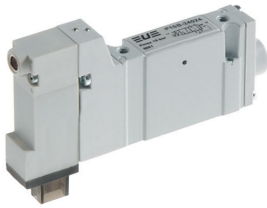
P10B733



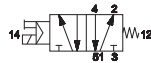
P10B833

Electrical impulse - Body for sub-base mounting

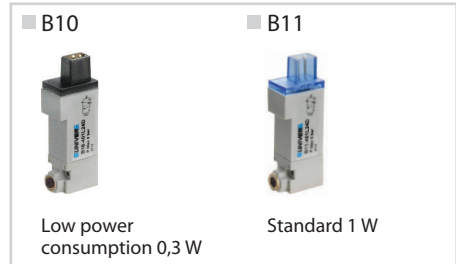
Single impulse



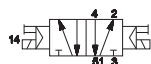
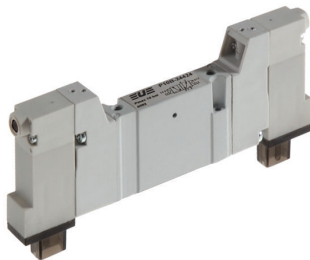
P10B24024 0,3 W
P10B26024 1 W



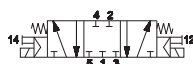
P10B24124 0,3 W
P10B26124 1 W



Double impulse



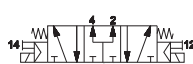
P10B24424 0,3 W
P10B26624 1 W



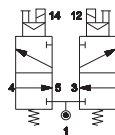
P10B34424 0,3 W
P10B36624 1 W



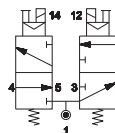
P10B44424 0,3 W
P10B46624 1 W



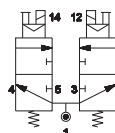
P10B54424 0,3 W
P10B56624 1 W



P10B64424 0,3 W
P10B66624 1 W

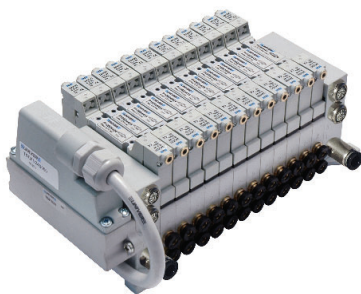


P10B74424 0,3 W
P10B76624 1 W



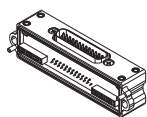
P10B84424 0,3 W
P10B86624 1 W

Integrated electrical connection - Body for sub-base mounting



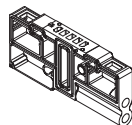
Configuration 25p conn.
max 12 bistable

TIM1024



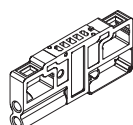
male connection module
25 poles, type sub-D

P10SB100/107



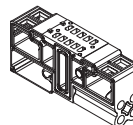
sub-base 1 place
side outlets M5, M7

P10SB110/117



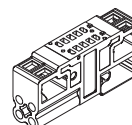
sub-base 1 place
side outlets M5, M7
1-3-5 closed

P10SB200/207



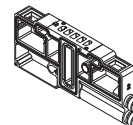
sub-base 2 places
side outlets M5, M7

P10SB210/217



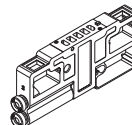
sub-base 2 places
side outlets M5, M7
1-3-5 closed

P10SB304



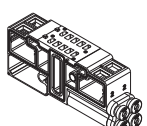
sub-base 1 place
side outlets with push-in
connections tube 4

P10SB314



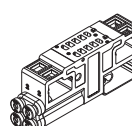
sub-base 1 place side
outlets with push-in
connections tube 4
1-3-5 closed

P10SB404



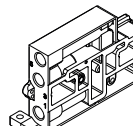
sub-base 2 places
side outlets with
push-in connections
tube 4

P10SB414



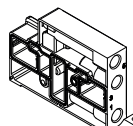
sub-base 2 places
side outlets with push-in
connections tube 4
1-3-5 closed

P10SB500



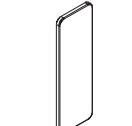
supply plate G1/8
for TIM module

P10SB505



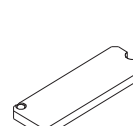
right supply plate G1/8

P10SB550



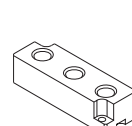
pressure separator

P10SB560



closing plate for unused
valve place

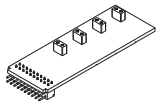
P10SB570



intermediate supply
plate for sub-base
version

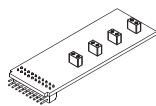
3

P10SS14M**



bus connection card, side 14
** = 04, 06, 08, 10, 12 places

P10SS12M**



bus connection card, side 12
** = 04, 06, 08, 10, 12 places

P10STR01



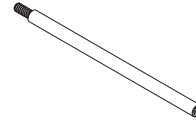
modular tie-rods
1 valve place

P10STR02



modular tie-rods
2 valve places

P10STR05



modular tie-rods
5 valve places

AZ4-SN003A

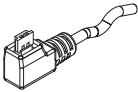
No. 100 nuts M3 for tie-rods

AZ4-VN0310

No. 100 screws M3x10 for tie-rods

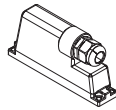
Electrical connections

D-535U40300
D-535U40500



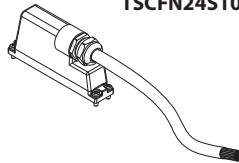
single connector cable 3-5 m

TSCFN24S000



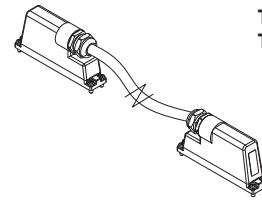
female connector
25 poles, type sub-D, no cable
M3x8 fixing screws

TSCFN24S0300
TSCFN24S0500
TSCFN24S1000



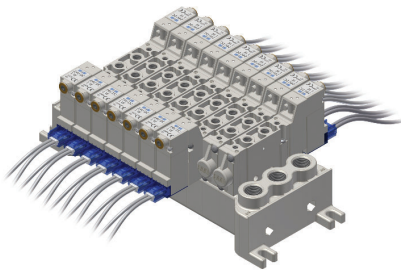
female connector
25 poles, type sub-D, prewired for 24
coils (3-5-10 m length)
M3x8 fixing screws

TSCFN16D0300
TSCFN16D0500
TSCFN16D1000

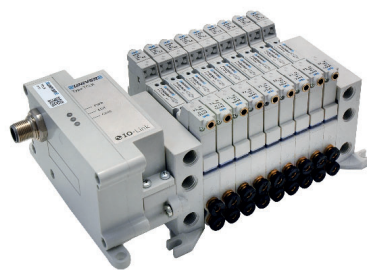


sub-D male/female flying connector (upon request)
prewired for 16 coils with cable Ø 8 mm (3-5-10 m length)
suitable for dynamic laying - M3x8 fixing screws

■ In-line connections



■ IO-Link connection



■ TC series Serial Communication System

