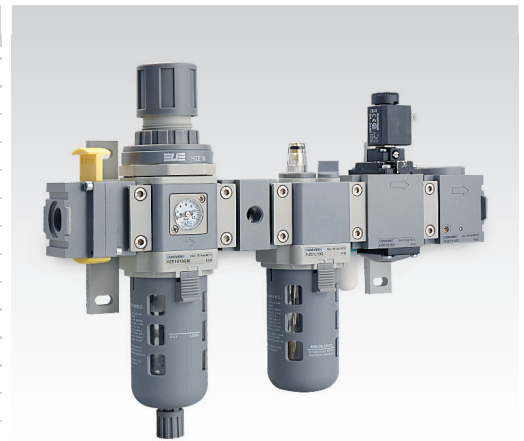


CHARACTERISTICS

Ambient temperature	0 ÷ +60 °C
Fluid	filtered air, with or without lubrication
Working pressure	10 bar
Max pressure	15 bar
Size	0 - 05 - 1 - 2
Body	tecnopolymer with metal threaded elements (size 0) die-cast aluminium (size 05 - 1 - 2)
Knob	tecnopolymer
Ring nut	tecnopolymer
Bowl	polycarbonate
Bowl guard	tecnopolymer (size 05 - 1 - 2)
Filter element	polyethylene
Seals	NBR
Springs	steel
Diaphragm	fabric reinforced rubber



For round gauge mounting (HZ9P):

Size 0/05 = Replace HZ9464G gauge with HZE7Z480 square adaptor G1/8, to be ordered separately

Size 1-2 = Replace HZ9464G gauge with HZE7Z480 square adaptor G1/8 placed on the rear side of the regulator or filter regulator

CODIFICATION KEY

H	Z	E	0	B	0	8	G		M	
1	2	3	4	5	6	7				

1 Series	2 Size	3 Model	
HZE = Air treatment units with standard manual drain	0 = Small (G1/4) 05 = Intermediate (G1/4 - G3/8) 1 = Medium (G3/8 - G1/2) 2 = Large (G1/2)	F = Filter R = Regulator L = Lubricator B = Filter regulator D = Filter regulator+Lubricator (FR+L) C = Filter+Regulator+Lubricator (F+R+L)	
4 Thread	5 Option	6 Pressure gauge	7 ATEX option
08G = G1/4 (sz. 0 - 05) 10G = G3/8 (sz. 05 - 1) 15G = G1/2 (sz. 1-2) 20G = G3/4 (sz. 2) * 25G = G1 (sz. 2) *	A = Automatic drain (except for size 0 - 05) S = Semi-automatic drain	M = Integrated square pressure gauge (standard supplied) Square adaptor G1/8 upon request	X = ATEX (upon request) See ATEX Catalogue for types and versions
* = with threaded ends			

Filter

	0	05	1	2		
Size						
Part No.	HZE0F08G	HZE05F08G	HZE05F10G	HZE1F10G	HZE1F15G	HZE2F15G
Connections	G1/4	G1/4	G3/8	G3/8	G1/2	G1/2
Filtration rate (µm)	5	5		5		5
Nominal flow rate (NI/min) ^(A)	1100	1500	2000	2300	2500	5000
Max inlet pressure (bar-MPa-psi)	10 - 1 - 145	10 - 1 - 145		10 - 1 - 145		10 - 1 - 145
Condensation drain capacity (cm ³)	12	40		45		80
Condensation drain	manual	manual		manual		manual

(A) = Inlet pressure 7 bar, Δp 0,5 bar

Regulator

	0	05	1	2	
Size					
Part No.	HZE0R08GM	HZE05R08GM HZE05R10GM	HZE1R10GM HZE1R15GM	HZE2R15GM	
Connections	G1/4	G1/4 G3/8	G3/8 G1/2	G1/2	
Nominal flow rate (NI/min) ^(A)	1000	1900 2500	2800 3500	5000	
Max inlet pressure (bar-MPa-psi)	10 - 1 - 145	10 - 1 - 145	10 - 1 - 145	10 - 1 - 145	
Pressure adjustment-relieving version (bar)	0,5 ÷ 8,5	0,5 ÷ 8,5	0,5 ÷ 8,5	0,5 ÷ 8,5	
Pressure gauge (standard supplied)	HZ9464G	HZ9464G	HZ9464G	HZ9464G	
Pressure gauge adaptor	G1/8 ^(B)	G1/8 ^(B)	G1/8 ^(C)	G1/8 ^(C)	

(A) = Inlet pressure 7 bar, outlet pressure 5 bar - Δp 1 bar

(B) = Upon request (replace HZ9464G gauge with HZE7Z480 square adaptor G1/8, to be ordered separately)

(C) = Standard supplied (replace HZ9464G gauge with HZE7Z480 square adaptor G1/8 placed on the rear side)

Other available versions

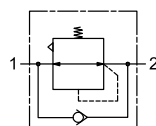
■ Without manometer size 0-05

■ Lockable knob size 05-1-2

■ Check valve size 0-05-1-2

The check valve inside the regulator allows to relieve downstream pressure in a quick and effective way.

■ Regulator with integrated digital pressure switch size 0-05-1-2



Size	Part No.
0	HZE0R08G
05	HZE05R08G - HZE05R10G

Size	Part No.
05	HZE05RL08GM - HZE05RL10GM
1	HZE1RL10GM - HZE1RL15GM
2	HZE2RL15GM

Size	Part No.
0	HZE0R08GMV
05	HZE05R08GMV - HZE05R10GMV
1	HZE1R10GMV-HZE1R15GMV
2	HZE2R15GMV

Size	Part No.
0	HZE0R08GQ
05	HZE05R08GQ - HZE05R10GQ
1	HZE1R10GQ-HZE1R15GQ
2	HZE2R15GQ

For M8 pressure switch connection, add "T" at the end of the code

Lubricator

	0	05	1	2	
Size					
Part No.	HZE0L08G	HZE05L08G HZE05L10G	HZE1L10G HZE1L15G	HZE2L15G	
Connections	G1/4	G1/4 G3/8	G3/8 G1/2	G1/2	
Nominal flow rate (NI/min) ^(A)	1400	1800 3800	4400	7000	
Max inlet pressure (bar-MPa-psi)	10 - 1 - 145	10 - 1 - 145	10 - 1 - 145	10 - 1 - 145	
Bowl capacity (cm³)	20	70	85	170	
Recommended oil	ISO VG 32	ISO VG 32	ISO VG 32	ISO VG 32	
Min. working flow rate (NI/min)	15	30	30	65	

(A) = Inlet pressure 7 bar - Δp 0,5 bar

Filter regulator



Size	0		05		1		2
Part No.	HZE0B08GM		HZE05B08GM	HZE05B10GM	HZE1B10GM	HZE1B15GM	HZE2B15GM
Connections	G1/4		G1/4	G3/8	G3/8	G1/2	G1/2
Filtration rate (µm)	5		5		5		5
Nominal flow rate (NI/min) ^(A)	600		1500	2000	2500	3000	4500
Max inlet pressure (bar-MPa-psi)	10 - 1 - 145		10 - 1 - 145		10 - 1 - 145		10 - 1 - 145
Pressure adjustment - relieving version (bar)	0,5 ÷ 8,5		0,5 ÷ 8,5		0,5 ÷ 8,5		0,5 ÷ 8,5
Pressure gauge (standard supplied)	HZ9464G		HZ9464G		HZ9464G		HZ9464G
Pressure gauge adaptor	G1/8 ^(B)		G1/8 ^(B)		G1/8 ^(C)		G1/8 ^(C)
Condensation drain capacity (cm ³)	12		40		45		80
Condensation drain	manual		manual		manual		manual

(A) = Inlet pressure 7 bar, outlet pressure 5 bar - Δp 1 bar

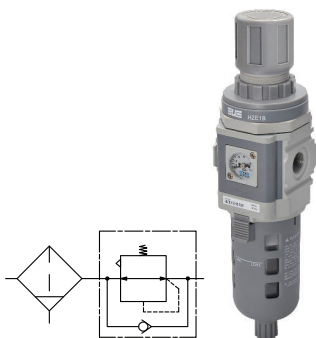
(B) = Upon request (replace HZ9464G gauge with HZE7Z480 square adaptor G1/8, to be ordered separately)

(C) = Standard supplied (replace HZ9464G gauge with HZE7Z480 square adaptor G1/8 placed on the rear side)

Other available versions

■ Check valve size 0-05-1-2

The check valve inside the filter regulator allows to relieve downstream pressure in a quick and effective way.



Size	Part No.
0	HZE0B08GMV
05	HZE05B08GMV - HZE05B10GMV
1	HZE1B10GMV - HZE1B15GMV
2	HZE2B15GMV

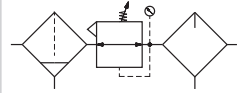
■ Filter regulator with integrated digital pressure switch size 0-05-1-2



Size	Part No.
0	HZE0B08GQ
05	HZE05B08GQ - HZE05B10GQ
1	HZE1B10GQ - HZE1B15GQ
2	HZE2B15GQ

For M8 pressure switch connection, add "T" at the end of the code

Filter regulator + Lubricator



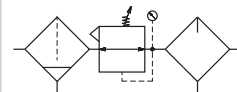
Size	0		05		1		2
Part No.	HZE0D08GM		HZE05D08GM	HZE05D10GM	HZE1D10GM	HZE1D15GM	HZE2D15GM
Connections	G1/4		G1/4	G3/8	G3/8	G1/2	G1/2
Filtration rate (µm)	5		5		5		5
Nominal flow rate (NI/min) ^(A)	600		1500	2000	2500	2800	4300
Max inlet pressure (bar-MPa-psi)	10 - 1 - 145		10 - 1 - 145		10 - 1 - 145		10 - 1 - 145
Fluid	compressed air		compressed air		compressed air		compressed air
Pressure adjustment - relieving version (bar)	0,5 ÷ 8,5		0,5 ÷ 8,5		0,5 ÷ 8,5		0,5 ÷ 8,5
Pressure gauge (standard supplied)	HZ9464G		HZ9464G		HZ9464G		HZ9464G
Pressure gauge adaptor	G1/8 ^(B)		G1/8 ^(B)		G1/8 ^(C)		G1/8 ^(C)
Condensation drain capacity (cm ³)	12		40		45		80
Condensation drain	manual		manual		manual		manual
Recommended oil	ISO VG 32		ISO VG 32		ISO VG 32		ISO VG 32
Min. working flow rate (NI/min)	15		30		30		65

(A) = Inlet pressure 7 bar, outlet pressure 5 bar - Δp 1 bar

(B) = Upon request (replace HZ9464G gauge with HZE7Z480 square adaptor G1/8, to be ordered separately)

(C) = Standard supplied (replace HZ9464G gauge with HZE7Z480 square adaptor G1/8 placed on the rear side)

Filter + Regulator + Lubricator



Size	0		05		1		2
Part No.	HZE0C08GM		HZE05C08GM	HZE05C10GM	HZE1C10GM	HZE1C15GM	HZE2C15GM
Connections	G1/4		G1/4	G3/8	G3/8	G1/2	G1/2
Filtration rate (µm)	5		5		5		5
Nominal flow rate (NI/min) ^(A)	550		1300	1500	1800	2000	3000
Max inlet pressure (bar-MPa-psi)	10 - 1 - 145		10 - 1 - 145		10 - 1 - 145		10 - 1 - 145
Fluid	compressed air		compressed air		compressed air		compressed air
Pressure adjustment - relieving version (bar)	0,5 ÷ 8,5		0,5 ÷ 8,5		0,5 ÷ 8,5		0,5 ÷ 8,5
Pressure gauge (standard supplied)	HZ9464G		HZ9464G		HZ9464G		HZ9464G
Pressure gauge adaptor	G1/8 ^(B)		G1/8 ^(B)		G1/8 ^(C)		G1/8 ^(C)
Condensation drain capacity (cm ³)	12		40		45		80
Condensation drain	manual		manual		manual		manual
Recommended oil	ISO VG 32		ISO VG 32		ISO VG 32		ISO VG 32
Min. working flow rate (NI/min)	15		30		30		65

(A) = Inlet pressure 7 bar, outlet pressure 5 bar - Δp 1 bar

(B) = Upon request (replace HZ9464G gauge with HZE7Z480 square adaptor G1/8, to be ordered separately)

(C) = Standard supplied (replace HZ9464G gauge with HZE7Z480 square adaptor G1/8 placed on the rear side)

Lockable Valve

	0	1^(B)	
Part No.	HZE0P08G	HZE1P10G	HZE1P15G
Connections	G1/4	G3/8	G1/2
Nominal flow rate (NI/min)^(A)	900	5000	
Max inlet pressure (bar-MPa-psi)	10 - 1 - 145		
Fluid	compressed air		

(A) = Inlet pressure 7 bar, outlet pressure 5 bar - Δp 1 bar
 (B) = Also usable with sizes 05 and 2

Diverter Block

	0	1^(B)	
Part No.	HZE0N08G	HZE1N10G	HZE1N15G
Connections	In/Out G1/4 Auxiliary G1/8	In/Out G3/8	In/Out G1/2 Auxiliary G1/4
Max inlet pressure (bar-MPa-psi)	10 - 1 - 145		
Fluid	compressed air		

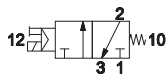
(B) = Also usable with sizes 05 and 2
 Use blanking plugs to close unused ways (not included)

Intermediate Diverter block

1^(B)	
Part No.	HZE1N1006G
Connections	Auxiliary G3/8 - G1/8
Max inlet pressure (bar-MPa-psi)	10 - 1 - 145
Fluid	compressed air

(B) = Also usable with sizes 05 and 2
 Use blanking plugs to close unused ways (not included)

Shut-off valve

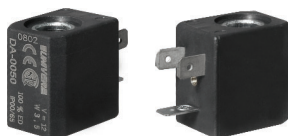


Size	0		1 ^(B)	
Part No.	HZE0S08G		HZE1S10G	HZE1S15G
Connections	G1/4		G3/8	G1/2
Nominal flow rate (NI/min) ^(A)	900		2800	
Max inlet pressure (bar-MPa-psi)	10 - 1 - 145		10 - 1 - 145	
Min. pressure (bar-MPa-psi)	2 - 0,16 - 23		2 - 0,2 - 29	
Fluid	compressed air		compressed air	
Commutation system	poppet		poppet	
Ways/Positions	3/2 NC		3/2 NC	
Control	indirect electropneumatic		indirect electropneumatic	
Nominal diameter (mm)	8		10	
Electropilot	U1 AA series		U1 AA series	
Coil	DA/DC		DA/DC	
Manual Override	two-position screw		two-position screw	

(A) = Inlet pressure 7 bar, outlet pressure 5 bar - Δp 1 bar

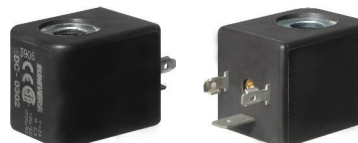
(B) = Also usable with sizes 05 and 2

Coils



■ U1

- DA-0050 12 V DC
- DA-0051 24 V DC
- DA-0106 24 V AC/50-60 Hz
- DA-0108 110 V AC/50-60 Hz
- DA-0124 230 V AC/50-60 Hz



■ U3

- DC-0301 12 V DC
- DC-0302 24 V DC
- DC-0307 24 V AC/50-60 Hz
- DC-0309 110 V AC/50-60 Hz
- DC-0310 230 V AC/50-60 Hz

Other available versions

■ Size 0 U05



■ Size 1 U05

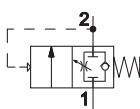


■ Size 1 U3 CNOMO



Solenoid valves are supplied with locking nut, without coil

Gradual Starter



Size	0		1 ^(B)	
Part No.	HZE0Y08G		HZE1Y10G	HZE1Y15G
Connections	G1/4		G3/8	G1/2
Nominal flow rate (NI/min) ^(A)	900		2200	
Max inlet pressure (bar-MPa-psi)	10 - 1 - 145		10 - 1 - 145	
Min. pressure (bar)	2		3,5	
Fluid	compressed air		compressed air	

(A) = Inlet pressure 7 bar, outlet pressure 5 bar - Δp 1 bar

(B) = Also usable with sizes 05 and 2

HZE0/05/1Z200	HZE0/05/1/2Z210	HZE0/05/1/2Z300	HZE0/05/1/2Z310	HZE7Z480/90	HZE2Z500/501
Assembly kit Size 0 HZE0Z200 Size 05 HZE05Z200 Size 1-2 HZE1Z200	T-bracket assembly kit Size 0 HZE0Z210 Size 05 HZE05Z210 Size 1 HZE1Z210 Size 2 HZE2Z210	C-bracket Size 0 HZE0Z300 Size 05 HZE05Z300 Size 1 HZE1Z300 Size 2 HZE2Z300	Regulator L-bracket Size 0 HZE0Z310 Size 05 HZE05Z310 Size 1 HZE1Z310 Size 2 HZE2Z310	Threaded adaptor for pressure gauge Size 0-05-1-2 G1/8 HZE7Z480 G1/4 HZE7Z490 Screw torque: Max 0,6 Nm	Threaded ends Size 2 G3/4 HZE2Z500 G1 HZE2Z501

Filter and filter regulator accessories

HZE0/05/1/2Z600	HZE0/05/1/2Z600SS	HZE7Z400	HZE0/1Z401	HZE0/1Z402
Standard bowl with manual drain Size 0 HZE0Z600 Size 05 HZE05Z600 Size 1 HZE1Z600 Size 2 HZE2Z600	Bowl with semi-automatic drain Size 0 HZE0Z600SS Size 05 HZE05Z600SS Size 1 HZE1Z600SS Size 2 HZE2Z600SS	Automatic drain Size 1-2	Semi-automatic drain Size 0 HZE0Z401 Size 05-1-2 HZE1Z401	Manual drain Size 0 HZE0Z402 Size 05-1-2 HZE1Z402

HZE0/05/1/2Z660



Filter elements 5 µm
 Size 0 HZE0Z660
 Size 05 HZE05Z660
 Size 1 HZE1Z660
 Size 2 HZE2Z660
 Other filter elements upon request

Regulator and filter regulator accessories

HZE0/05/1/2Z602	HZE05/1/2Z652/4/8	HZE0/05/1/2Z603	HZE0/05/1/2Z610/1
Knob Size 0 HZE0Z602 Size 05 HZE05Z602 Size 1 HZE1Z602 Size 2 HZE2Z602	Regulator spring Size 05 Pressure adjustment HZE05Z658 0,5 ÷ 8,5 Size 1 HZE1Z652 0,5 ÷ 1,7 HZE1Z654 0,5 ÷ 3,5 HZE1Z658 0,5 ÷ 8,5 Size 2 HZE2Z652 0,5 ÷ 1,7 HZE2Z654 0,5 ÷ 3,5 HZE2Z658 0,5 ÷ 8,5	Ring nut for panel Size 0 HZE0Z603 Size 05 HZE05Z603 Size 1 HZE1Z603 Size 2 HZE2Z603	Diaphragm kit Size 0 HZE0Z610 relieving HZE0Z611 non-relieving Size 05 HZE05Z610 relieving HZE05Z611 non-relieving Size 1 HZE1Z610 relieving HZE1Z611 non-relieving Size 2 HZE2Z610 relieving HZE2Z611 non-relieving

Lubricator accessories

HZE0/05/1/2Z601	HZE7Z470	HZ9N	HZ9NP50	HZ9N12
Standard bowl Size 0 HZE0Z601 Size 05 HZE05Z601 Size 1 HZE1Z601 Size 2 HZE2Z601	Lubricator transparent dome Size 0-05-1-2 HZE7Z470	See ACCESSORIES chapter		