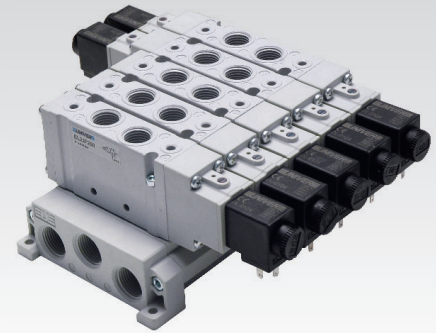


## CHARACTERISTICS

Ambient temperature	-5 ÷ +50 °C
Fluid	filtered air 10 µm, with or without lubrication
Commutation system	spool
Max pressure	8 bar (electrical control) 10 bar (pneumatic control)
Connection	G1/4
Nominal flow rate (NI/min)	1700 (5/2) 1450 (5/3) 1450 (3/2+3/2)
Valve body	aluminium
Seals	NBR
Electropilot/Coil	series U06/DL
Spool	aluminium
Voltage	12 V DC - 24 V DC - 24 V AC - 110 V AC - 230 V AC
Power consumption	2,5 W 5 VA
Protection degree	IP65
Manual override	impulse 1-2 positions



## CODIFICATION KEY

E	L	2	2	F	2	5	0		
1	2	3	4	5	6				

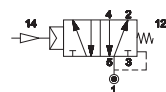
<b>1 Series</b> <b>EL22F</b> = ESSENTIAL Valves 22 mm - G1/4	<b>2 Type</b> 2 = 5/2      6 = 3/2+3/2 NC-NC 3 = 5/3 c.c.      7 = 3/2+3/2 NC-NO 4 = 5/3 o.c.      8 = 3/2+3/2 NO-NO 5 = 5/3 p.c.	<b>3 Control 14</b> 3 = Pneumatic amplified 5 = Electrical amplified DC/AC
<b>4 Return 12</b> 0 = Pneumomechanical spring 1 = Mechanical spring 3 = Pneumatic amplified 5 = Electrical amplified DC/AC	<b>5 Option</b> D = External pilot supply	<b>6 ATEX option</b> X = Atex (upon request)

See ATEX Catalogue for types and versions

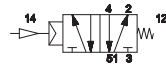
c.c. = closed centers    o.c. = open centers    p.c. = pressurized centers

## Pneumatic impulse

### Single impulse



EL22F230

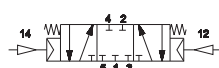


EL22F231

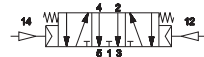
### Double impulse



EL22F233



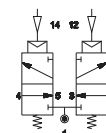
EL22F333



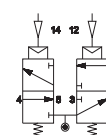
EL22F433



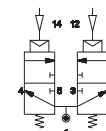
EL22F533



EL22F633



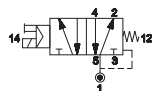
EL22F733



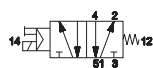
EL22F833

## Electrical impulse

### Single impulse

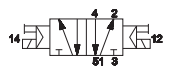
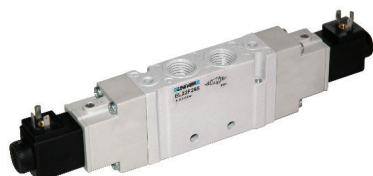


EL22F250

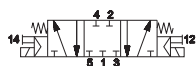


EL22F251

### Double impulse



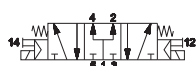
EL22F255



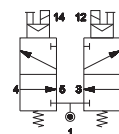
EL22F355



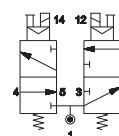
EL22F455



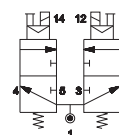
EL22F555



EL22F655

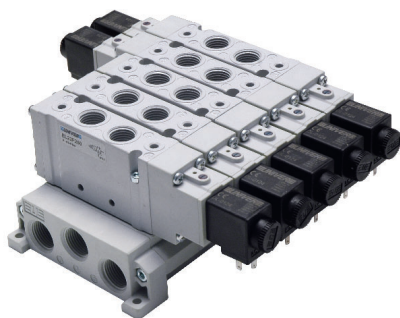


EL22F755



EL22F855

## Modular sub-base in technopolymer



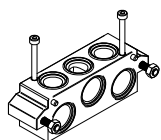
EL22SF300

EL22SF515

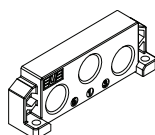
EL22SF516

EL18SF518

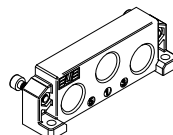
EL22SF550



Sub-base 1 place  
(screws and seals are included)



Left supply plate G1/4



Right supply plate G1/4  
(screws and seals are included)



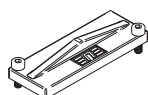
Fixing spring for DIN rail  
(screws are included)



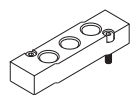
Pressure separator

EL22SF560

EL22SF570

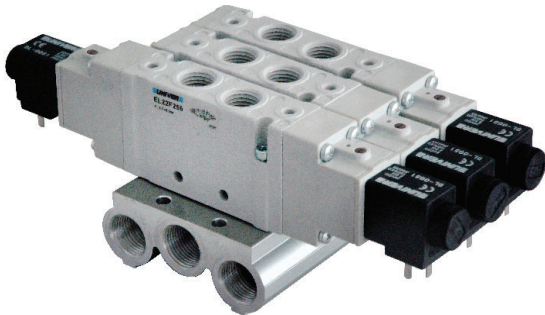


Closing plate for unused  
valve place (screws are  
included)



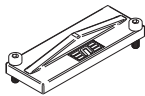
Intermediate supply plate  
(screws are included)

Aluminium sub-base



Part No.	No. positions
EL22SF900-02	2
EL22SF900-03	3
EL22SF900-04	4
EL22SF900-05	5
EL22SF900-06	6
EL22SF900-07	7
EL22SF900-08	8
EL22SF900-09	9
EL22SF900-10	10

EL22SF560



Closing plate for unused valve place (screws are included)

The sub-base includes gaskets and screws for mounting valves

Coil and connector

■ Coil



- DL-0050 12 V DC 2,5 W
- DL-0051 24 V DC 2,5 W
- DL-0106 24 V AC 50/60 Hz 5 VA
- DL-0108 110 V AC 50/60 Hz 5 VA
- DL-0124 230 V AC 50/60 Hz 5 VA

■ Connector



AM-5109