

DF-RW



Cable extensions
DHF-033M12 = 3 m M12 (max 6 V)
DHF-053M12 = 5 m M12 (max 6 V)

Type	ELECTRONIC	
	DF-RW700L03	DF-RW700M12
Part No.		
Working voltage (V DC)	10÷28 V DC	10÷28 V DC
Max switching current (mA)	5÷50	5÷50
Max switching power (W)	1,5	1,5
Working temperature (°C)	-10 ÷ +60	
Max voltage drop (V AC/DC)	5	5
Cable number and section (mmq)	2x4,8 (PUC)	2x4,8 (PUC)
Cable length (mm)	3000	500
Contact	NO	NO
Max response time (ms)	50	50
State indicator (LED)	red (detection position) verde (optimal detection position)	
Protection degree IEC 60529)	IP67	
Shock resistance (G)	50	50

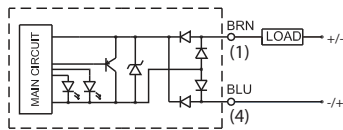
Cylinder series

DF-RW:
 JX1, JX2, YMA20, YMP20, YMP30, YMP50 (Ø16÷25), JLES (Ø12), JLEV (Ø12), YR3 DF-T

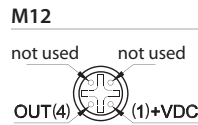
DF-RW + DF-R002:
 M, KE, KD, KL, RP, RO, RS, RQ, OV, R, W, JTES, JTEV, YMA11, YMP40, YMP50 (Ø32÷63)

DF-RW + DF-R003:
 JLE (Ø16÷63)

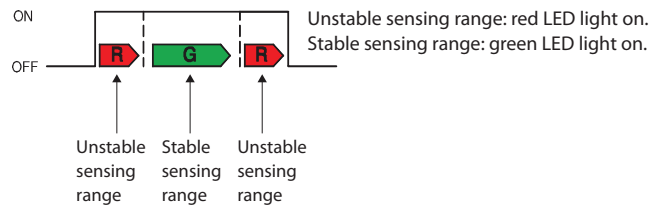
Electrical Circuit



BRN = Brown
 BLU = Blue



■ **Two color indication**



Mounting scheme

