

MATCHING TABLE - COILS/ELECTROPILOTS - ELECTROPILOTS/SOLENOID VALVES			Electropilots						
			A (U05)	B (U04)	AA (U1)	AA (U3)		AB (U2)	
Coils	U04	10 mm		■					
	U05	15 mm	■						
	U1	22 mm			■				
	U2	30 mm						■	■
	U3	30 mm				■	■		
Solenoid valves	BE	ISO 1 - ISO 2 ISO 3 - ISO 4	■ (a)				■		R
	AE	ISO 1 - ISO 2			■	■			
	BD	ISO 01 26 mm ISO 02 18 mm	■						
	AC-N	Interface NAMUR			■	■			
	CL	G1/8			■	■			
	CM	G1/4			■	■			
	COMPA 2/4		■						
	G6	G1/8	■	■					
	GL6	sub-base	■						
	G7	G1/8	R		■	■			
	PS	tube Ø 4 tube Ø 6 tube Ø 8		■					
	AC	G1/8 - G1/4			■	■			
		G1/2			R	R		■	
	AF	G1/8			■	■			
		G1/4 - G3/8			■	■		■	
		G1/2 ÷ G1			R	R		■	
	AG	G1 1/2							■
		G1/8			■	■			
		G1/4 ÷ G1			R	R		■	
	P15E	G1 1/2							■
G1/8			■						

■ = Standard    R = Upon request    (a) = Connector M12

 Available ATEX version upon request  
 See ATEX Catalogue for types and versions

**10 mm U04 Coils for B series electropilots**

■ With integrated 90° upward connector


**DE-352** 24 V DC 1,2 W  
**DE-452** 24 V DC 1,35 W (with led)  
**DE-355** 24 V DC 0,5 W

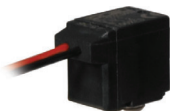
**Connector:**  
 D-500  
 D-530-...  
 D-535-...

■ With in-line connector


**DE-552** 24 V DC 1,2 W  
**DE-652** 24 V DC 1,35 W (with led)  
**DE-555** 24 V DC 0,5 W

**Connector:**  
 D-500  
 D-530-...  
 D-535-...

■ With loose cables (length 300 mm)


**DE-052L030** 24 V DC 1,2 W

■ With in-line connector with protecting cover for complete tightness


**DE-642I** 12 V DC 1,35 W  
**DE-652I** 24 V DC 1,35 W (with led)  
**DE-655I** 24 V DC 0,5 W

**Connector:**  
 D-530C-100  
 D-530C-200

15 mm U05 Coils for A series electropilot

■ with integrated 90° upward connector



**DD-351** 24 V DC  
**Connector:**  
 D-500  
 D-530-...  
 D-535-...

■ with integrated 90° downward connector



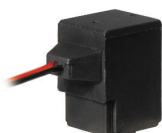
**DD-151** 24 V DC  
**Connector:**  
 D-500  
 D-530-...  
 D-535-...

■ with in-line connector



**DD-551** 24 V DC  
**Connector:**  
 D-500  
 D-530-...  
 D-535-...

■ with loose cables (300 mm)



**DD-051L030** 24 V DC 2 W  
**DD-052L030** 24 V DC 2,5 W

■ 15 mm - Faston



**DD-013** 230 V AC 50/60 Hz 3,5 VA  
**DD-040** 24 V AC 50/60 Hz 2,3 VA  
**DD-041** 12 V DC 2 W  
**DD-042** 12 V DC 2,5 W  
**DD-050** 48 V AC 50/60 Hz 2,3 VA

**DD-051** 24 V DC 2 W  
**DD-052** 24 V DC 2,5 W  
**DD-060** 110 V AC 50/60 Hz 2,3 VA  
**DD-070** 230 V AC 50/60 Hz 2,3 VA

**Connector:**  
 AM-5109

Coil U06 15 mm for valves EL18/EL22

■ 15 mm



**DL-0050** 12 V DC 2,5 W  
**DL-0051** 24 V DC 2,5 W  
**DL-0106** 24 V AC 50/60 Hz 5 VA  
**DL-0108** 110 V AC 50/60 Hz 5 VA  
**DL-0124** 230 V AC 50/60 Hz 5 VA

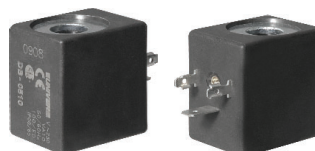
U1 - U2 - U3 Coil

■ 22 mm (U1)



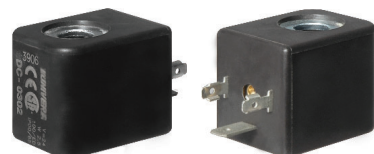
**DA-0050** 12 V DC 3,5 W  
**DA-0051** 24 V DC 3,5 W  
**DA-0106** 24 V AC 50/60 Hz 5 VA  
**DA-0108** 110 V AC 50/60 Hz 5 VA  
**DA-0124** 230 V AC 50/60 Hz 5 VA

■ 30 mm (U2)



**DB-0501** 12 V DC 11 W  
**DB-0502** 24 V DC 11 W  
**DB-0507** 24 V AC 50/60 Hz 10 VA  
**DB-0509** 110 V AC 50/60 Hz 10 VA  
**DB-0510** 230 V AC 50/60 Hz 10 VA

■ 30 mm (U3)



**DC-0301** 12 V DC 2,5 W  
**DC-0302** 24 V DC 2,5 W  
**DC-0307** 24 V AC 50/60 Hz 3,3 VA  
**DC-0309** 110 V AC 50/60 Hz 3,3 VA  
**DC-0310** 230 V AC 50/60 Hz 3,3 VA

For CSA-UL Certified coils see Certified Electropilot section

Connectors

■ Miniature connector without wires



**D-500**  
**Coil:**  
 U04/U05

■ Miniature connector with loose cables



**D-530-30**  
**D-530-50**  
**D-530-200**  
**Coil:**  
 U04/U05

■ Miniature connector with cable



**D-535-30**  
**D-535-50**  
**D-535-200**  
**Coil:**  
 U04/U05

■ 15 mm Connector



**AM-5109**  
**Coil:**  
 U05/U06

■ 20 mm Connector



**AM-5110**  
**Coil:**  
 U1

■ 30 mm Connector



**AM-5111**  
**Coil:**  
 U2/U3