

HZE05

Air Treatment Units

New size 05 (50 mm)

Standard configurations:

- Filter
- Regulator
- Lubricator
- Filter regulator (FR)
- Filter regulator + Lubricator (FR+L)
- Filter + Regulator + Lubricator (F+R+L)

ATEX version available upon request:

CE II 3 GD c nA II T5 -10 °C ≤ Ta ≤ 45 °C



TECHNICAL CHARACTERISTICS

Ambient temperature	0 ÷ 60 °C
Fluid	compressed filtered air, with or without lubrication
Working pressure	10 bar
Max pressure	15 bar

CONSTRUCTIVE CHARACTERISTICS

Body	die-cast aluminium (painted)
Knob	technopolymer
Ring nut	technopolymer
Bowl	polycarbonate
Bowl guard	technopolymer
Filter element	polyethylene
Seals	nitrile rubber (NBR)
Springs	steel
Diaphragm	fabric reinforced rubber

CODIFICATION KEY

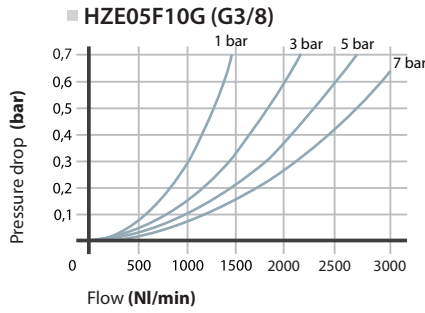
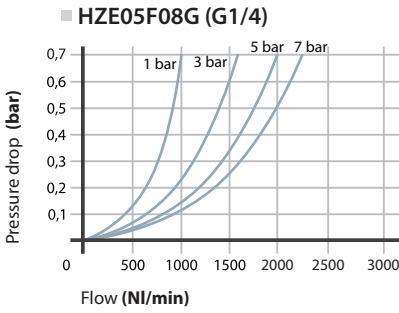
H	Z	E	0	5	B	0	8	G		M	
1			2		3		4		5	6	7

1 Series	2 Size	3 Model
HZE Air treatment units with standard manual drain	05 = (G1/4 - G3/8)	F = Filter R = Regulator L = Lubricator B = Filter regulator (FR) D = Filter regulator + Lubricator (FR+L) C = Filter + Regulator + Lubricator (F+R+L)
4 Thread	5 Option	6 Pressure gauge
08G = G1/4" 10G = G3/8"	S = Semi-automatic drain	M = Integrated square pressure gauge (standard supplied)
7 ATEX option	X = Atex (upon request)	

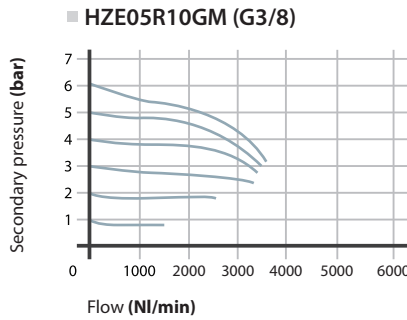
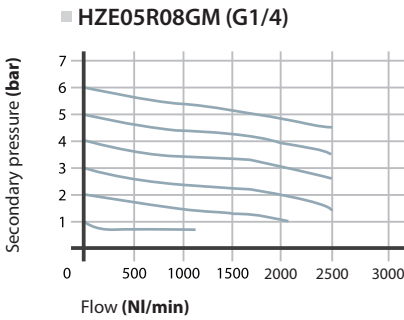
Flow characteristics

Filter

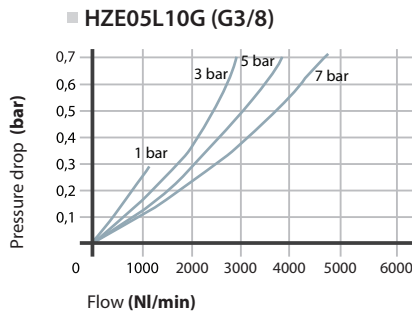
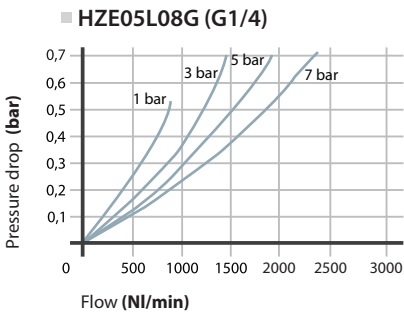
>> Supply pressure
7 bar



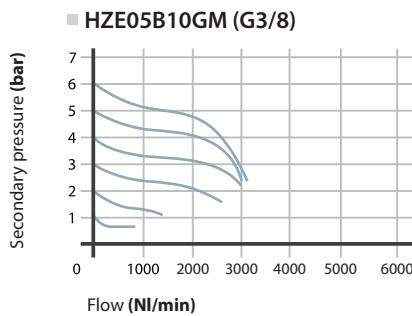
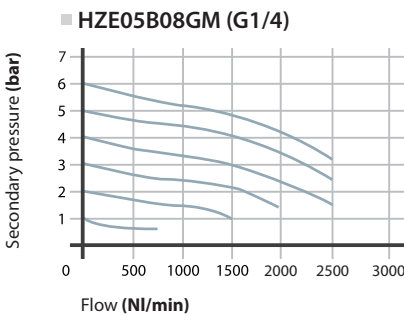
Regulator



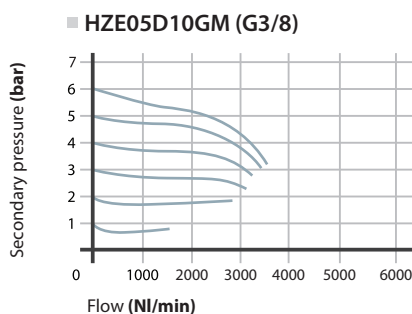
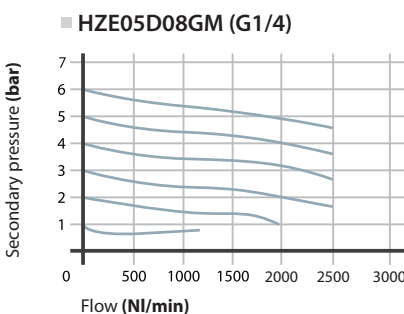
Lubricator



Filter regulator

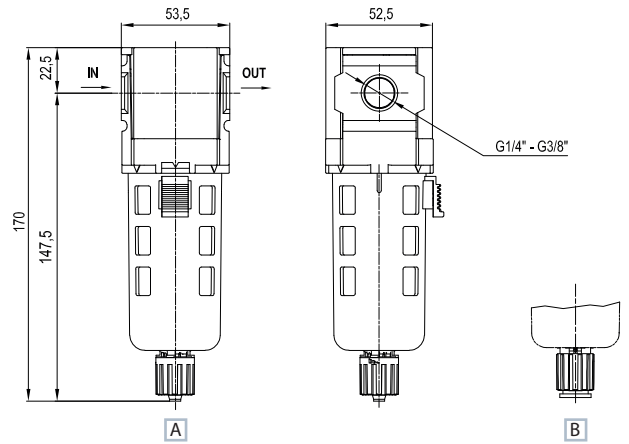


Filter regulator + Lubricator



4

F - Filter

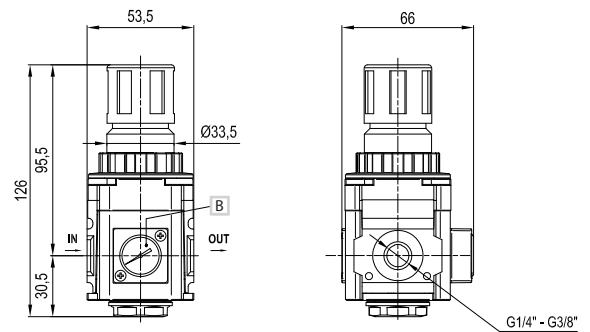


- A** Manual drain ID Tube 5,5 mm
- B** Semi-automatic drain OD Tube 8 mm

Part No.	HZE05F08G	HZE05F10G
Connections	G1/4	G3/8
Filtration rate (μm)	5	
Flow rate NI/min ^(A)	1500	2000
Max inlet pressure (bar-MPa-psi)	10 - 1 - 145	
Fluid	compressed air	
Ambient temperature (°C)	0 ÷ 60	
Condensation drain capacity (cm ³)	40	
Condensation drain	manual	
Weight (Kg)	0,17	
Mounting position	vertical	

(A) = inlet pressure 7 bar - Δp 0,2 bar

R - Regulator



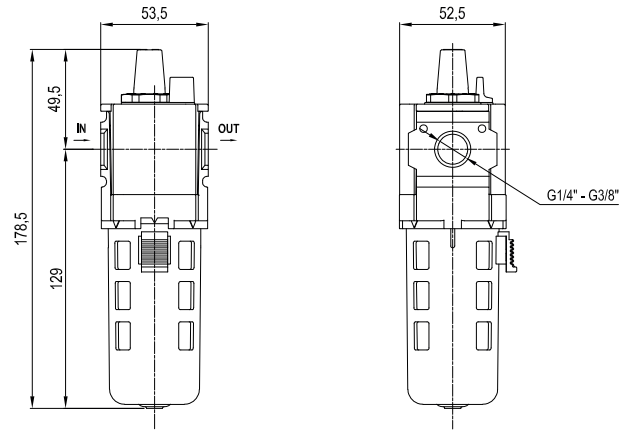
- B** Pressure gauge **HZ9464G** standard supplied

Part No.	HZE05R08GM	HZE05R10GM
Connections	G1/4	G3/8
Flow rate (NI/min) ^(A)	1900	2500
Max inlet pressure (bar-MPa-psi)	10 - 1 - 145	
Pressure adjustment-relieving version (bar)	0,5 ÷ 8,5	
Pressure gauge (standard supplied)	HZ9464G	
Pressure gauge adaptor	G1/8 ^(B)	
Fluid	filtered air	
Ambient temperature (°C)	0 ÷ 60	
Weight (Kg)	0,31	
Mounting position	any	

(A) = inlet pressure 7 bar, outlet pressure 5 bar - Δp 1 bar

(B) = upon request (replace HZ9464G gauge with HZE7Z480 square adaptor G1/8, to be ordered separately)

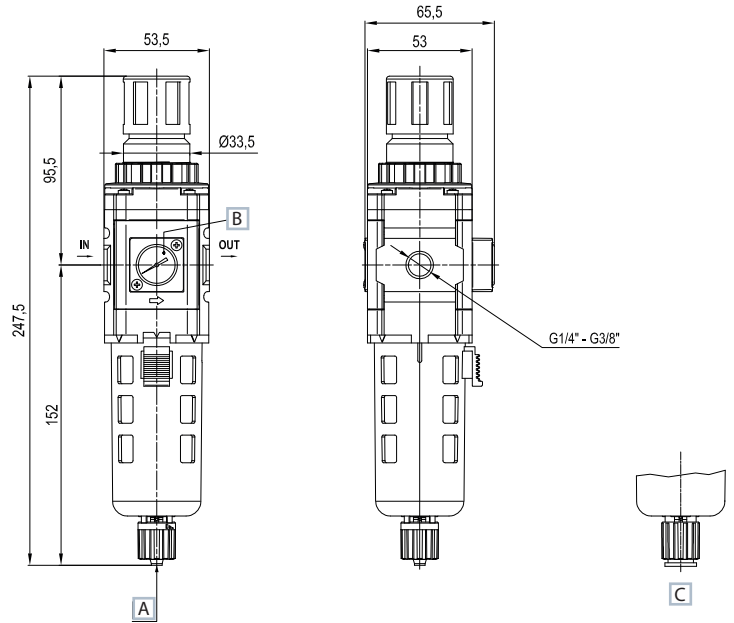
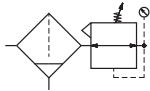
L - Lubricator



Part No.	HZE05L08G	HZE05L10G
Connections	G1/4	G3/8
Flow rate (NI/min) ^(A)	1800	3800
Max inlet pressure (bar-MPa-psi)	10 - 1 - 145	
Fluid	filtered air	
Ambient temperature (°C)	0 ÷ 60	
Bowl capacity (cm ³)	70	
Weight (Kg)	0,21	
Mounting position	vertical	
Recommended oil	ISO VG 32	
Min. working flow rate (NI/min)	30	

(A) = inlet pressure 7 bar - Δp 0,5 bar

B - Filter regulator



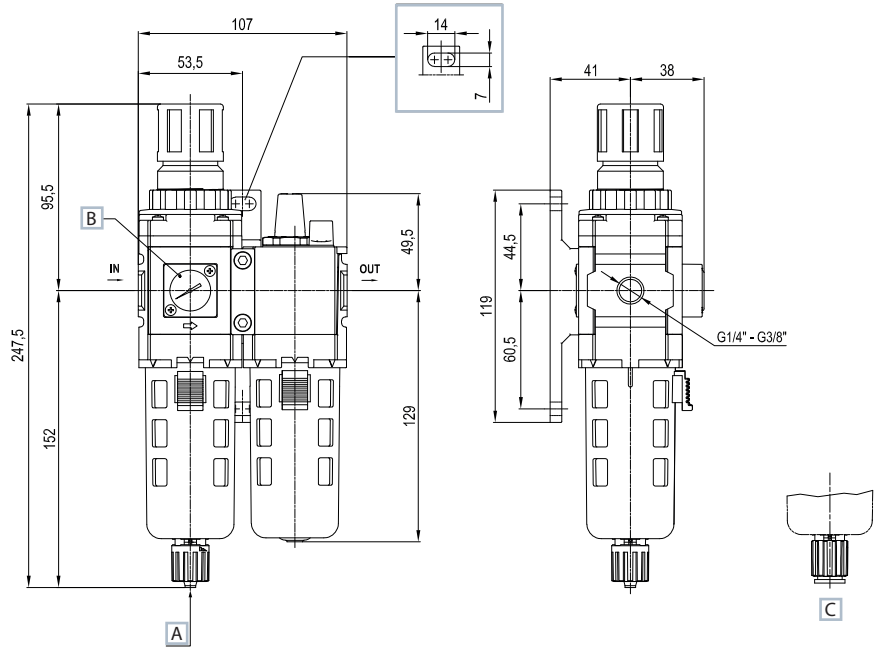
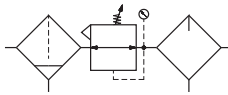
- A** Manual drain ID Tube 5,5 mm
- B** Pressure gauge **HZ9464G** standard supplied
- C** Semi-automatic drain OD Tube 8 mm

Part No.	HZE05B08GM	HZE05B10GM
Connections	G1/4	G3/8
Filtration rate (µm)	5	
Flow rate NI/min ^(A)	1500	2000
Max inlet pressure (bar-MPa-psi)	10 - 1 - 145	
Pressure adjustment-relieving version (bar)	0,5 ÷ 8,5	
Pressure gauge (standard supplied)	HZ9464G	
Pressure gauge adaptor	G1/8 ^(B)	
Fluid	compressed air	
Ambient temperature (°C)	0 ÷ 60	
Condensation drain capacity (cm ³)	40	
Condensation drain	manual	
Weight (Kg)	0,41	
Mounting position	vertical	

(A) = inlet pressure 7 bar, outlet pressure 5 bar - Δp 1 bar

(B) = upon request (replace HZ9464G gauge with HZE7Z480 square adaptor G1/8, to be ordered separately)

D - Filter regulator + Lubricator



- A Manual drain ID Tube 5,5 mm
- B Pressure gauge **HZ9464G** standard supplied
- C Semi-automatic drain OD Tube 8 mm

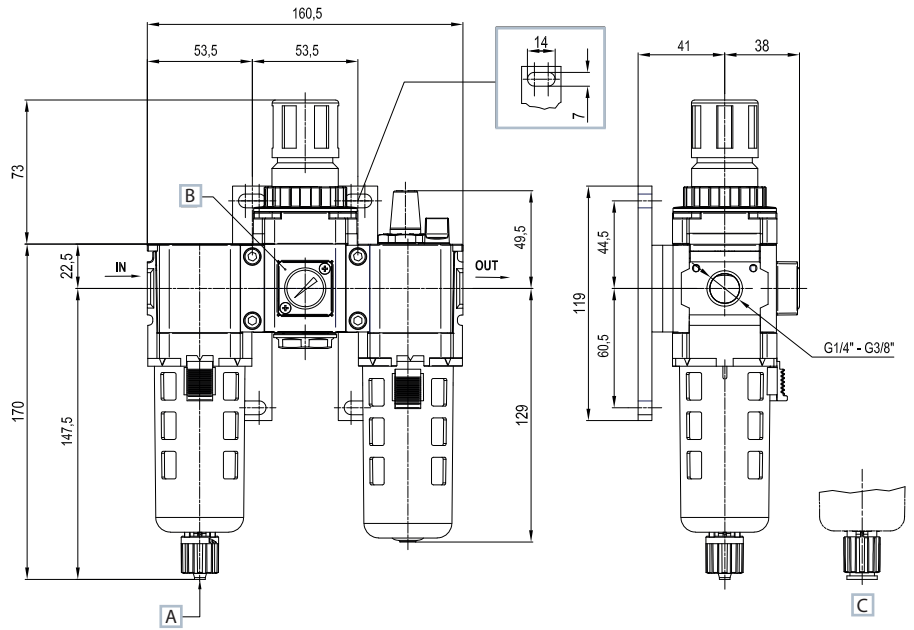
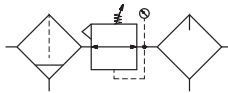
Part No.	HZE05D08GM	HZE05D10GM
Connections	G1/4	G3/8
Filtration rate (µm)	5	
Flow rate (NI/min) ^(A)	1500	2000
Max inlet pressure (bar-MPa-psi)	10 - 1 - 145	
Pressure adjustment-relieving version (bar)	0,5 ÷ 8,5	
Pressure gauge (standard supplied)	HZ9464G	
Pressure gauge adaptor	G1/8 ^(B)	
Fluid	compressed air	
Ambient temperature (°C)	0 ÷ 60	
Condensation drain capacity (cm ³)	40	
Condensation drain	manual	
Weight (Kg)	0,70	
Mounting position	vertical	
Recommended oil	ISO VG 32	
Min. working flow rate (NI/min)	30	

(A) = inlet pressure 7 bar, outlet pressure 5 bar - Δp 1 bar

(B) = upon request (replace HZ9464G gauge with HZE7Z480 square adaptor G1/8, to be ordered separately)

4

C - Filter + Regulator + Lubricator



- A** Manual drain ID Tube 5,5 mm
- B** Pressure gauge **HZ9464G** standard supplied
- C** Semi-automatic drain OD Tube 8 mm

Part No.	HZE05C08GM	HZE05C10GM
Connections	G1/4	G3/8
Filtration rate (µm)	5	
Flow rate (NI/min) ^(A)	1300	1500
Max inlet pressure (bar-MPa-psi)	10 - 1 - 145	
Pressure adjustment-relieving version (bar)	0,5 ÷ 8,5	
Pressure gauge (standard supplied)	HZ9464G	
Pressure gauge adaptor	G1/8 ^(B)	
Fluid	compressed air	
Ambient temperature (°C)	0 ÷ 60	
Condensation drain capacity (cm ³)	40	
Condensation drain	manual	
Weight (Kg)	0,80	
Mounting position F+L	vertical	
Mounting position R	any	
Recommended oil	ISO VG 32	
Min. working flow rate (NI/min)	30	

(A) = inlet pressure 7 bar, outlet pressure 5 bar - Δp 1 bar

(B) = upon request (replace HZ9464G gauge with HZE7Z480 square adaptor G1/8, to be ordered separately)

Other available versions

HZE05R08/10G



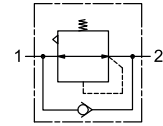
Regulator without pressure gauge size 05
HZE05R08G
HZE05R10G

HZE05RL08/10GM



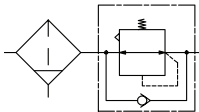
Regulator with lockable knob size 05
HZE05RL08GM
HZE05RL10GM

HZE05R08/10GMV



Regulator with check valve size 05
The check valve inside the regulator allows to relieve downstream pressure in a quick and effective way.
HZE05R08GMV
HZE05R10GMV

HZE05B08/10GMV



4 Filter regulator with check valve size 05
The check valve inside the filter regulator allows to relieve downstream pressure in a quick and effective way.
HZE05B08GMV
HZE05B10GMV

HZE05R08/10GQ



Regulator with integrated digital pressure switch size 05
HZE05R08GQ
HZE05R10GQ

HZE05B08/10GQ



Filter regulator with integrated digital pressure switch size 05
HZE05B08GQ
HZE05B10GQ

Accessories

HZE1Y10G



Gradual starter size 1
HZE1Y10G

HZE1N10G



Diverter block size 1
HZE1N10G

HZE1P10G



Lockable valve size 1
HZE1P10G

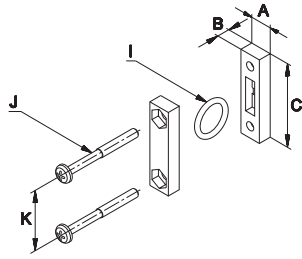
HZE1S10G



Shut-off valve size 1
HZE1S10G

Fixing elements

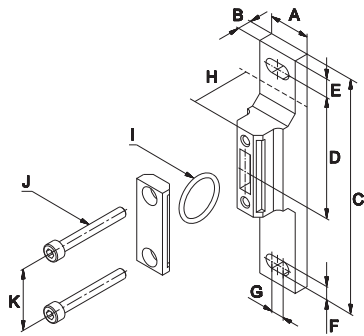
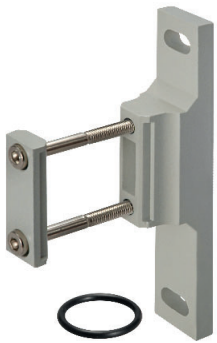
Assembly kit



size	A	B	C	ØI	J	K	Part no.
05	12	7	44	25,5	M5x45	32	HZE05Z200



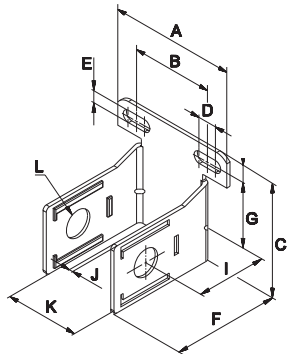
T-bracket assembly kit



size	A	B	C	D	E	F	G	H	ØI	J	K	Part no.
05	19	6	119	44,5	7	7	7	23	25,5	M5x45	32	HZE05Z210



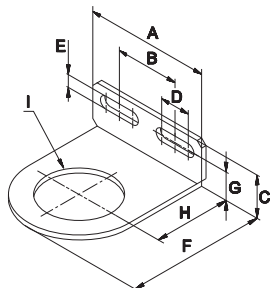
C-bracket



size	A	B	C	D	E	F	G	H	I	J	K	ØL	Part no.
05	57	28	76	13	6,5	67	45	41	2	53,4	25,4	HZE05Z300	



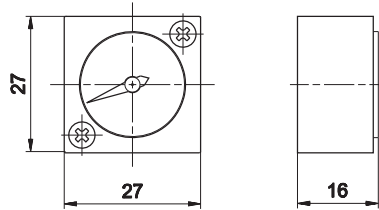
Regulator L-bracket



size	A	B	C	D	E	F	G	H	ØI	Part no.
05	57	28	28	13	6,5	64	18	39	36,5	HZE05Z310



HZ9464G



Integrated square pressure gauge (standard supplied)
 size 0 - 05 - 1 - 2 (0 ÷ 12 bar)
 Screw tightening torque: Max 0,6 Nm
 (supplied without screws)

HZE7Z480

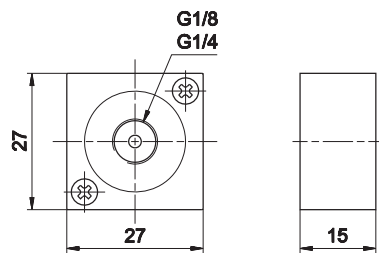
HZE7Z490



G1/8

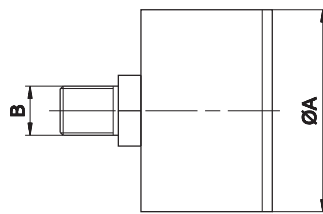


G1/4



Threaded adaptor for round pressure gauge
 Screw tightening torque: Max 0,6 Nm
 (supplied without screws)

HZ9P...



Part no.	Ø A	Scale		Thread - B
		bar	MPa	
HZ9P400318	40	0 - 2,5	0 - 0,25	R1/8C
HZ9P400618	40	0 - 6	0 - 0,6	R1/8C
HZ9P401018	40	0 - 10	0 - 1	R1/8C
HZ9P500314	50	0 - 2,5	0 - 0,25	R1/4C
HZ9P500614	50	0 - 6	0 - 0,6	R1/4C
HZ9P501014	50	0 - 10	0 - 1	R1/4C
HZ9P630314	63	0 - 2,5	0 - 0,25	R1/4C
HZ9P630614	63	0 - 6	0 - 0,6	R1/4C
HZ9P631014	63	0 - 10	0 - 1	R1/4C

Body: technopolymer
Dial: acrylic, pressure mounted
Accuracy: EN 837 class 1,6 - 2,5. ASME B40.1 grade B
Protection: IP 43

4

Filter regulator accessories

HZE05Z600



Standard bowl with manual drain size 05
HZE05Z600

HZE05Z600SS



Bowl with semi-automatic drain size 05
HZE05Z600SS

HZE1Z401



Semi-automatic drain size 05
HZE1Z401

HZE1Z402



Manual drain size 05
HZE1Z402

HZE05Z660



Filter element 5 µm size 05
HZE05Z660

Regulator and filter regulator accessories

HZE05Z602



Knob size 05
HZE05Z602

HZE05Z658



Regulator spring size 05
HZE05Z658
Pressure adjustment
0,5 ÷ 8,5

HZE05Z603



Ring nut for panel size 05
HZE05Z603

HZE05Z610/1



Diaphragm kit size 05
HZE05Z610 with relieving
HZE05Z611 without relieving

Lubricator accessories

HZE05Z601



Standard bowl size 05
HZE05Z601

HZE7Z470



Lubricator transparent dome size 05
HZE7Z470