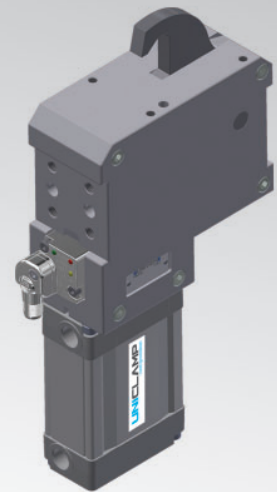


UST50

UNICLAMP Pneumatic pin clamp, with vanishing hook



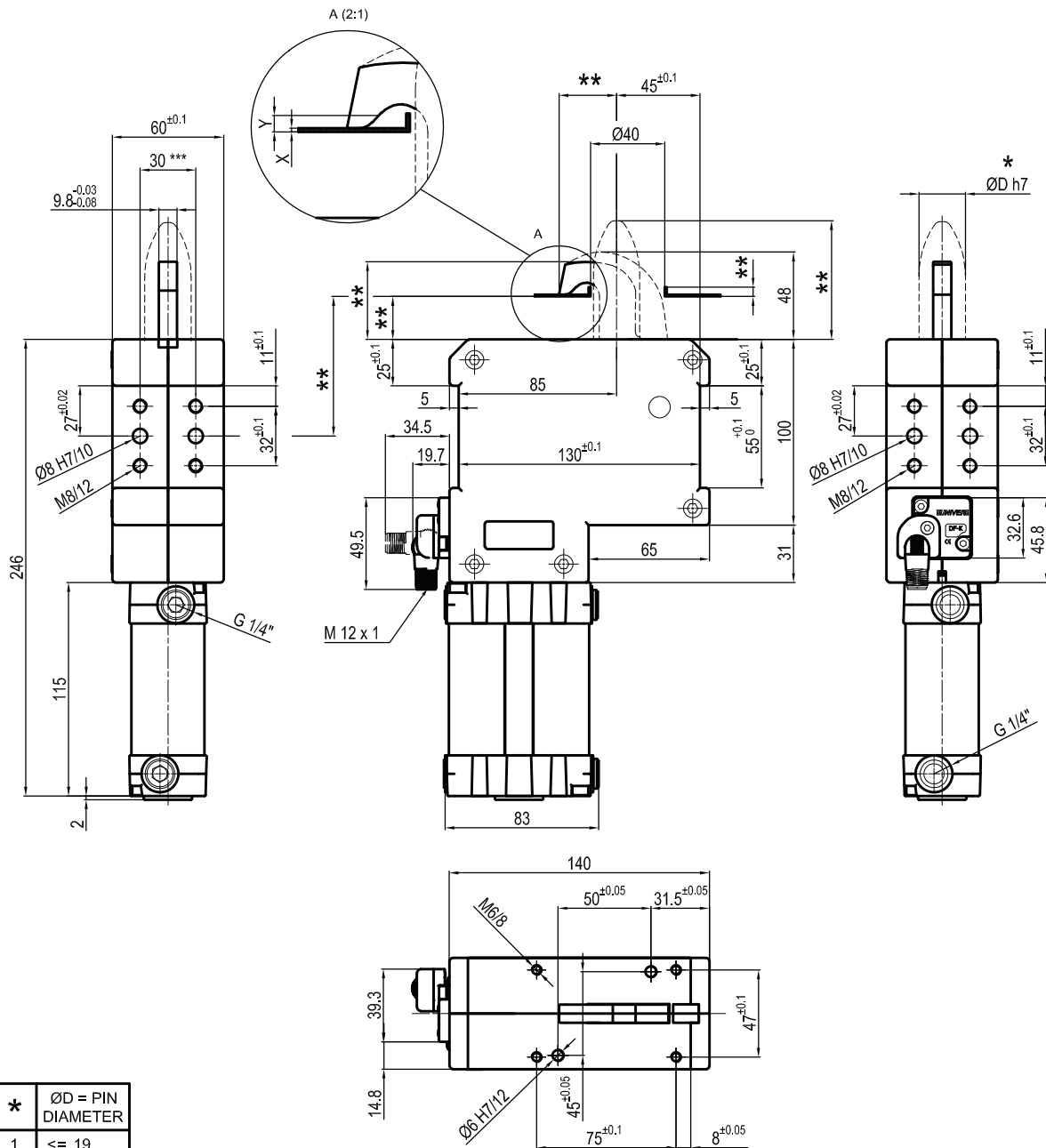
U	S	T	5	0	T	2	0	-	-	-	K	0
1	2	3	4	5	6	7	8	9				

1 Serie	2 Version	3 Size
US = UNICLAMP Pin clamp	T = Pneumatic	50 = Ø 50 mm

4 Model	5 Pin diameter	6 Locating pin
T = With vanishing hook	1 <= Ø 18 mm 2 = Ø 20 mm 3 = Ø 25 mm 4 = Ø 30 mm 5 = Ø 35 mm 6 = Ø 40 mm For pin Ø outside the mentioned range, please contact our Sales Dept.	0 = Locating pin not included 1 = Locating pin included

7 Progressive numbering	8 Sensor	9 Product revision
Progressive numbers for special products are assigned by the Sales.	K = Electronic sensor PNP (optical) (DF-K) N = No sensor (with protection plate)	Assigned by UNIVER

UST50T_0__K0



*	ØD = PIN DIAMETER
1	<= 19
2	20
3	25
4	30
5	35
6	40

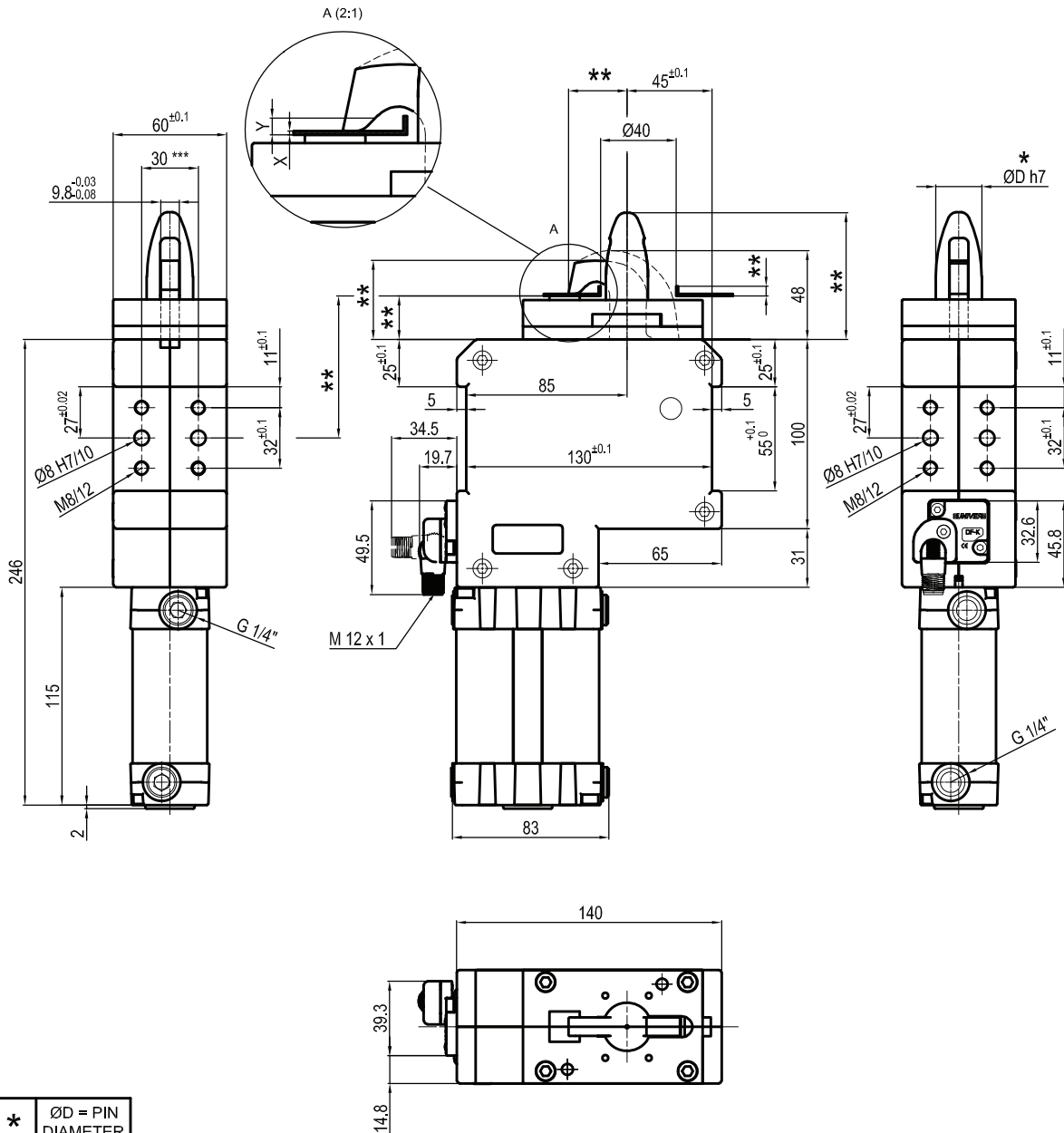
Bore Ø	Clamping force	Weight (reference plate, pin and hook not included)
50 mm	3500 N	3 Kg

Min./Max. operating pressure: **0,4 / 0,6 MPa**
 Operating temperature: **5° ÷ 45° C**
 Elektronischer Sensor mit M12 schwenkbarem Stecker (von 0° bis 90° orientierbar, in schritten von 10°)
 Versorgungsspannung: **10÷30Vdc**
 IP code: **IP 65**
 Pneumatic ports on both sides

** : MISSING DIMENSION TO BE DEFINED ACCORDING TO CUSTOMER SPECIFICATIONS
 *** : TOLERANCE BETWEEN DOWEL HOLES ± 0,02, BETWEEN SCREW HOLES ± 0,1
X= metal sheet
Y = clamping range (X + 1,5 mm Max)

Subject to technical modifications without notice

UST50T_1___K0



Bore Ø	Clamping force	Weight (reference plate, pin and hook not included)
50 mm	3500 N	3 Kg

Min./Max. operating pressure: **0,4 / 0,6 MPa**
 Operating temperature: **5° ÷ 45° C**
 Electronic sensor with M12 swivel connector, from 0° to 90°, in steps of 10°
 Supply voltage: 10 ÷ 30 Vdc
 IP code: **IP 65**
 Pneumatic ports on both sides

** : MISSING DIMENSION TO BE DEFINED ACCORDING TO CUSTOMER SPECIFICATIONS
 *** : TOLERANCE BETWEEN DOWEL HOLES ± 0,02, BETWEEN SCREW HOLES ± 0,1

X= metal sheet
 Y = clamping range (X + 1,5 mm Max)

Subject to technical modifications without notice