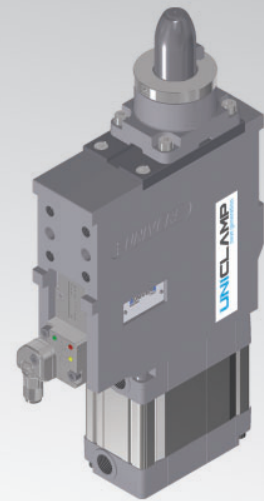


USP63

UNICLAMP Pneumatic pin clamp HC

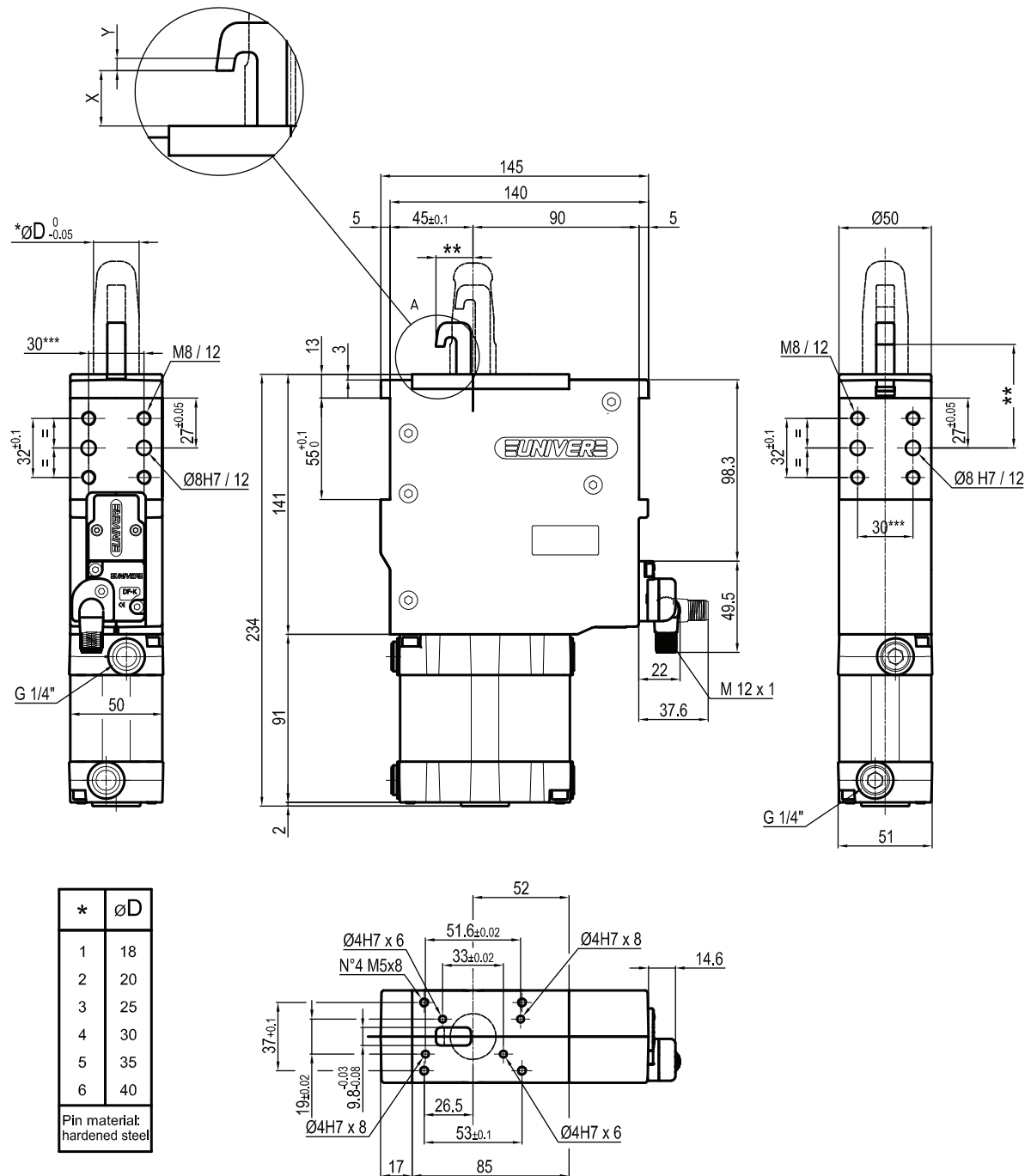


U	S	P	6	3	J	3	0	-	-	-	K	0
1	2	3	4	5	6	7	8	9				

1 Series	2 Version	3 Size
US = UNICLAMP Pin clamp, with compensation	P = Pneumatic	63 = Ø 63 mm
4 Model	5 Pin diameter	6 Locating pin
J = Standard R = Locking/unlocking device	1 <= Ø 19 mm 2 = Ø 20 mm 3 = Ø 25 mm 4 = Ø 30 mm 5 = Ø 35 mm 6 = Ø 40 mm For pin Ø outside the mentioned range please contact our Sales Dept.	0 = Locating pin not included 1 = Locating pin included
7 Progressive numbering	8 Sensor	9 Product revision
Progressive numbers for special products are assigned by the Sales.	K = Electronic sensor PNP (optical) (DF-K) N = No sensor (with protection plate)	Assigned by UNIVER

HC= High Compensation

USP63J_0___K0



Bore ∅	Clamping force	Weight (reference plate, pin and hook not included)
63 mm	3500 N	3,1 Kg

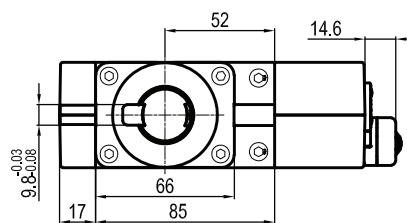
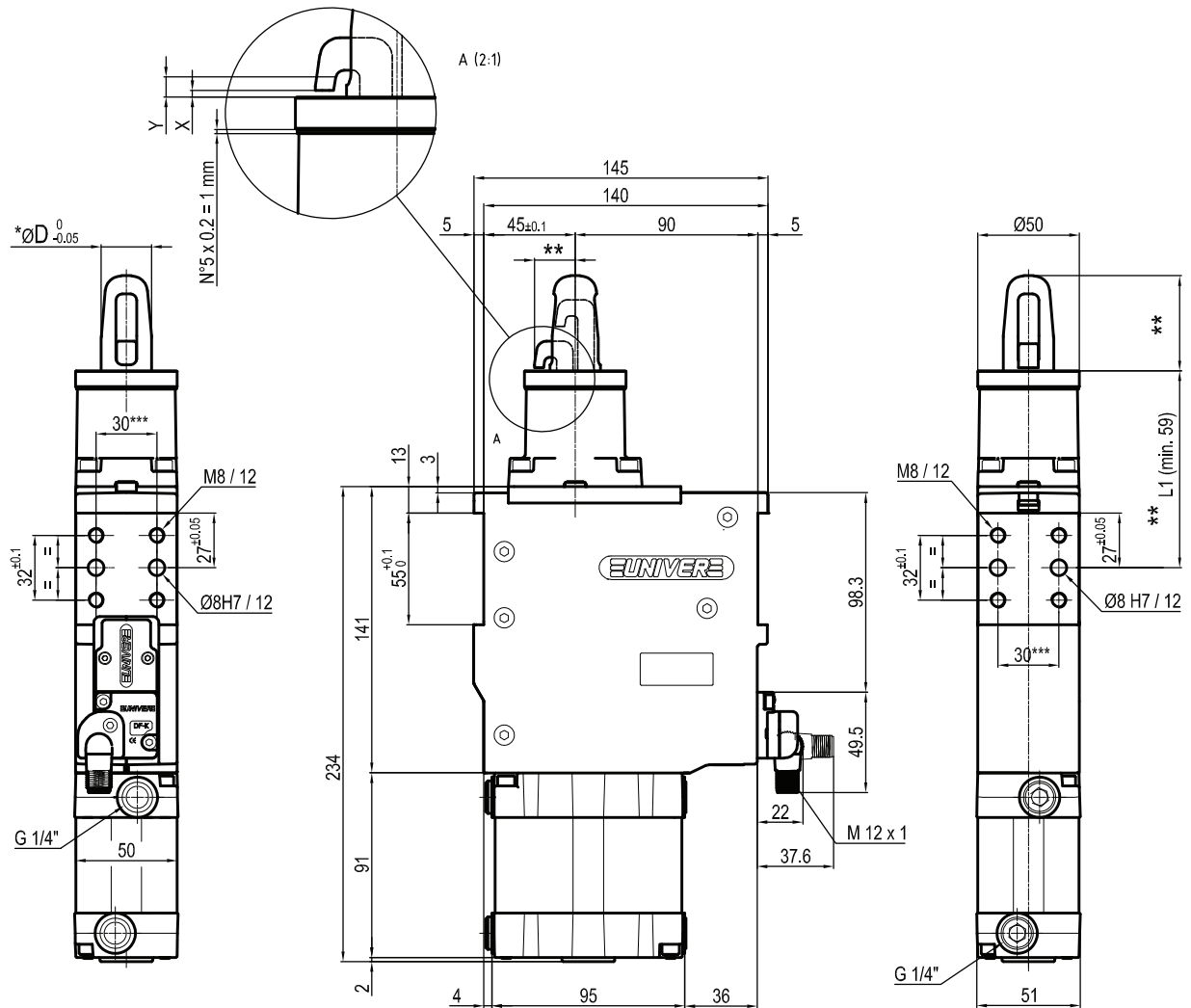
Min./Max. operating pressure: **0,4 / 0,6 MPa**
 Operating temperature: **5° ÷ 45° C**
 Electronic sensor with M12 swivel connector, from 0° to 90°, in steps of 10°
 Supply voltage: 10 ÷ 30 Vdc
 IP code: **IP 65**

** : MISSING DIMENSION TO BE DEFINED ACCORDING TO CUSTOMER SPECIFICATIONS
 *** : TOLERANCE BETWEEN DOWEL HOLES ± 0,02, BETWEEN SCREW HOLES ± 0,1

X= metal sheet
Y = clamping range (X + 6 mm Max)

Subject to technical modifications without notice

USP63J_1___K0



Bore ø	Clamping force	Weight (reference plate, pin and hook not included)
63 mm	3500 N	3,1 Kg

Min./Max. operating pressure: **0,4 / 0,6 MPa**
 Operating temperature: **5° ÷ 45° C**
 Electronic sensor with M12 swivel connector, from 0° to 90°, in steps of 10°
 Supply voltage: 10 ÷ 30 Vdc
 IP code: **IP 65**

** : MISSING DIMENSION TO BE DEFINED ACCORDING TO CUSTOMER SPECIFICATIONS
 *** : TOLERANCE BETWEEN DOWEL HOLES ± 0,02, BETWEEN SCREW HOLES ± 0,1

X= metal sheet
Y = clamping range (X + 6 mm Max)

Subject to technical modifications without notice