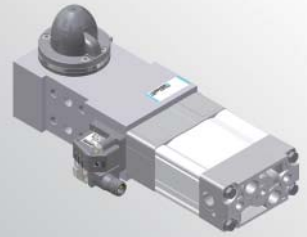


# LSP50U

Pneumatic pin clamp



L	S	P	5	0	U	U	3	1	0	0	0	0
1	2	3		4	5	6	7	8	9			

<b>1</b> Series	<b>2</b> Version	<b>3</b> Size
-----------------	------------------	---------------

LS = Pneumatic pin clamp

P = Pneumatic standard

50 = Ø 50 mm

<b>4</b> Model	<b>5</b> Sensing style	<b>6</b> Pin diameter
----------------	------------------------	-----------------------

U = Orthogonal

U = Electronic sensor with  
M12 swivel connector

2 = Ø 20 mm

3 = Ø 25 mm

4 = Ø 30 mm

5 = Ø 35 mm

<b>7</b> Locating pin	<b>8</b> Working height	<b>9</b> Progressive numbering
-----------------------	-------------------------	--------------------------------

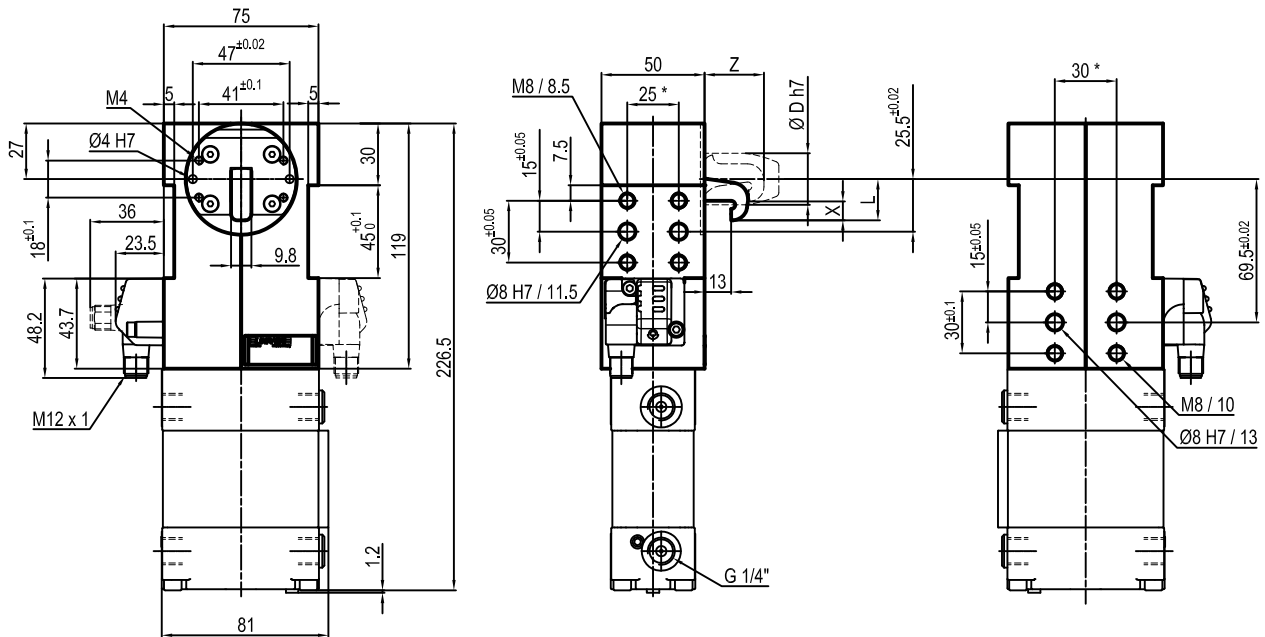
0 = Locating pin non included

1 = Locating pin included

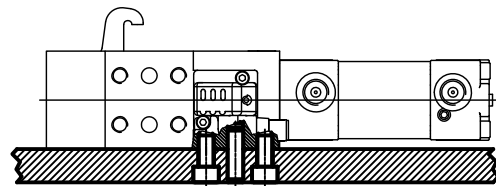
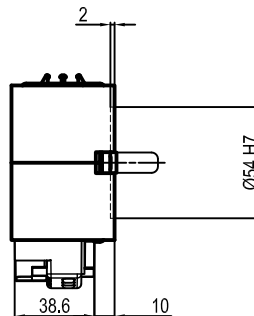
0 = Standard

Others upon request

Progressive numbers for special products are assigned by the Sales Dept.



ØD	L	X	Z
20	17,5	8,1	28,5
25	20	8,4	28,5
30	22,5	8,4	31
35	25	8,4	32

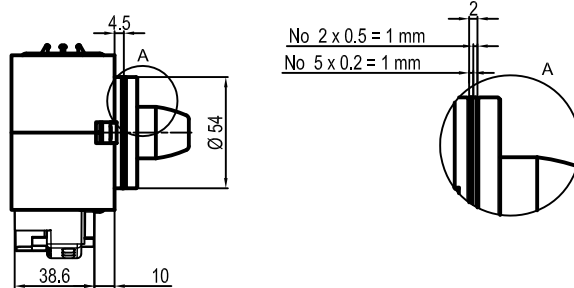
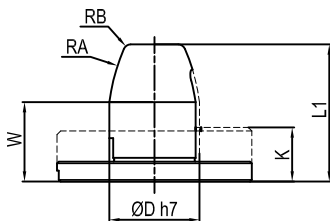
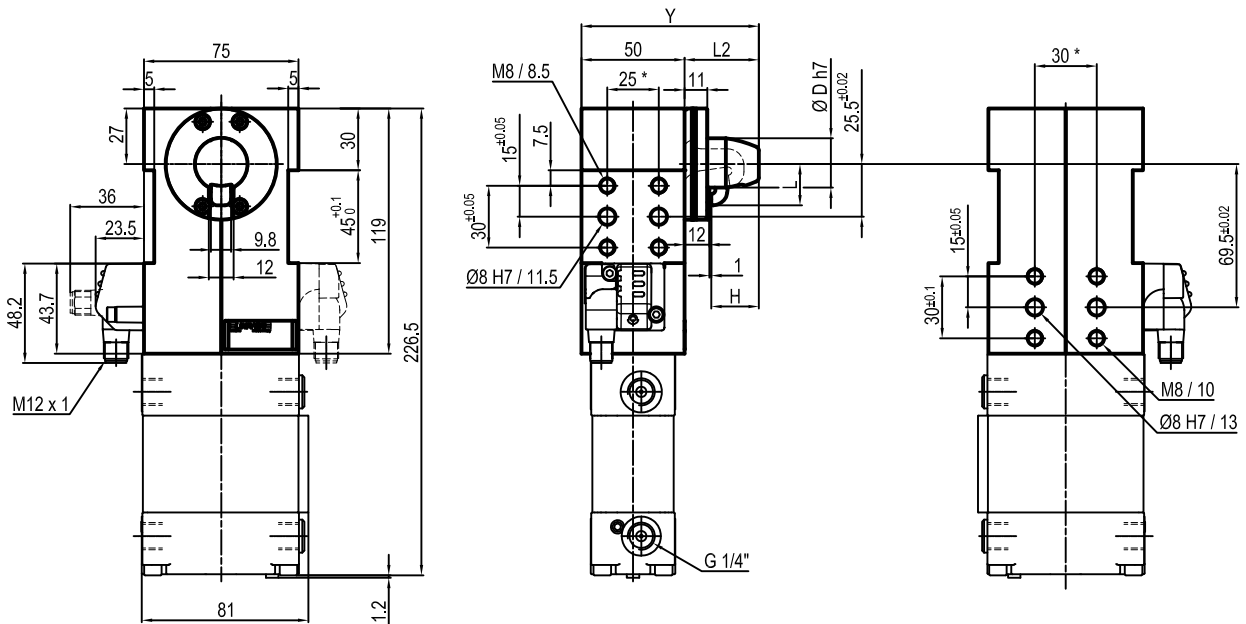


Bore Ø	Clamping force	Weight
50 mm	400 Kg	2.2 Kg

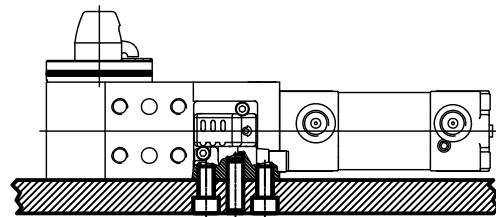
Min./Max. operating pressure: **0,4 / 0,8 MPa**  
 Operating temperature: **5° + 45° C**  
 Electronic sensor with M12 swivel connector that can be orientated at 0° or 90°  
 Supply voltage: 10+30 Vdc  
 IP code: **IP 54**  
 Pneumatic ports on both sides

\* : TOLERANCE BETWEEN DOWEL HOLES ± 0.02, TO SCREW HOLES ± 0.1  
 THE SENSOR CAN BE MOUNTED ON EITHER RIGHT OR LEFT SIDE

SUBJECT TO TECHNICAL MODIFICATIONS WITHOUT NOTICE



ØD	H	K	L	L1	L2	RA	RB	W	Y
20	23	14	17,5	38	36	70	2	22	86
25	23	14	20	38	36	55	2	22	86
30	30	14	22,5	45	43	33	2	22	93
35	30	14	25	45	43	28	2	22	93



Bore Ø	Clamping force	Weight
50 mm	400 Kg	2.2 Kg

Min./Max. operating pressure: **0,4 / 0,8 MPa**  
 Operating temperature: **5° + 45° C**  
 Electronic sensor with M12 swivel connector that can be orientated at 0° or 90°  
 Supply voltage: 10+30 Vdc  
 IP code: **IP 54**  
 Pneumatic ports on both sides

\* : TOLERANCE BETWEEN DOWEL HOLES ± 0.02, TO SCREW HOLES ± 0.1  
 THE SENSOR CAN BE MOUNTED ON EITHER RIGHT OR LEFT SIDE

SUBJECT TO TECHNICAL MODIFICATIONS WITHOUT NOTICE