



LNE225

Electric Power clamps conforming to NAAMS Standards

LNE | 225 | N | L | 31

1 2 3 4 5

1 Series

LNE = Electric Power Clamps conforming to NAAMS Standards

2 Size

225 = 225 Nm
 Mounting surface interchangeable with pneumatic power clamp, Ø50 mm

3 Arm mount position

N = No arm

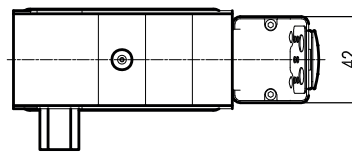
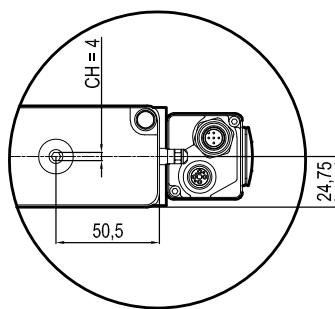
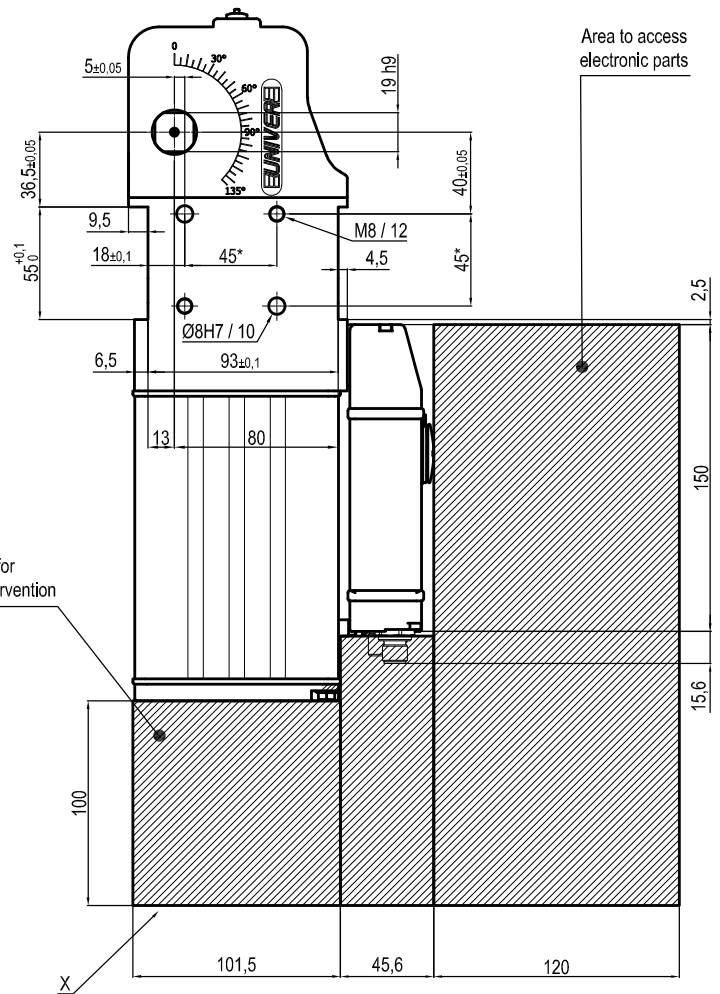
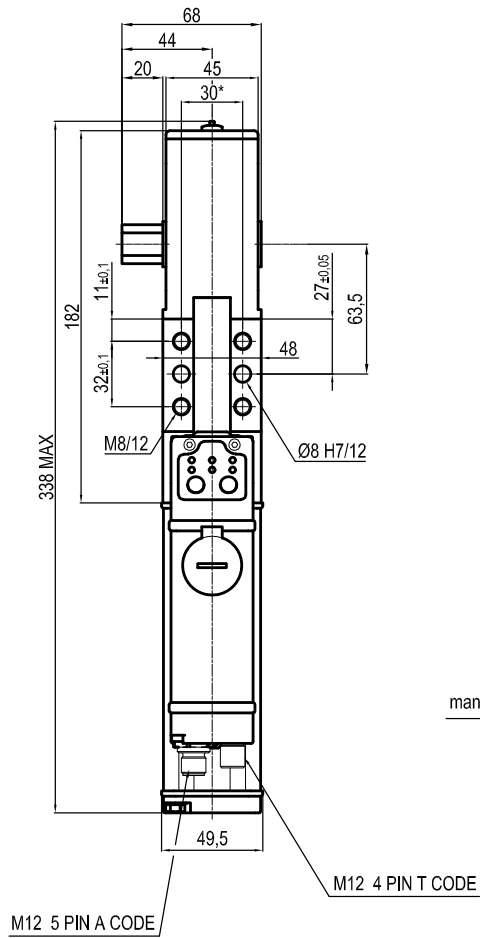


4 Output shaft mounting options

N = Dual square shaft
L = Left side only
R = Right side only

5 Control unit

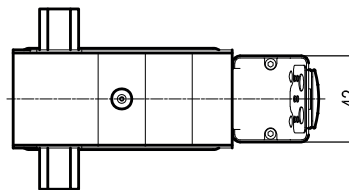
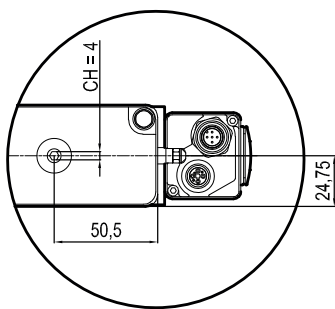
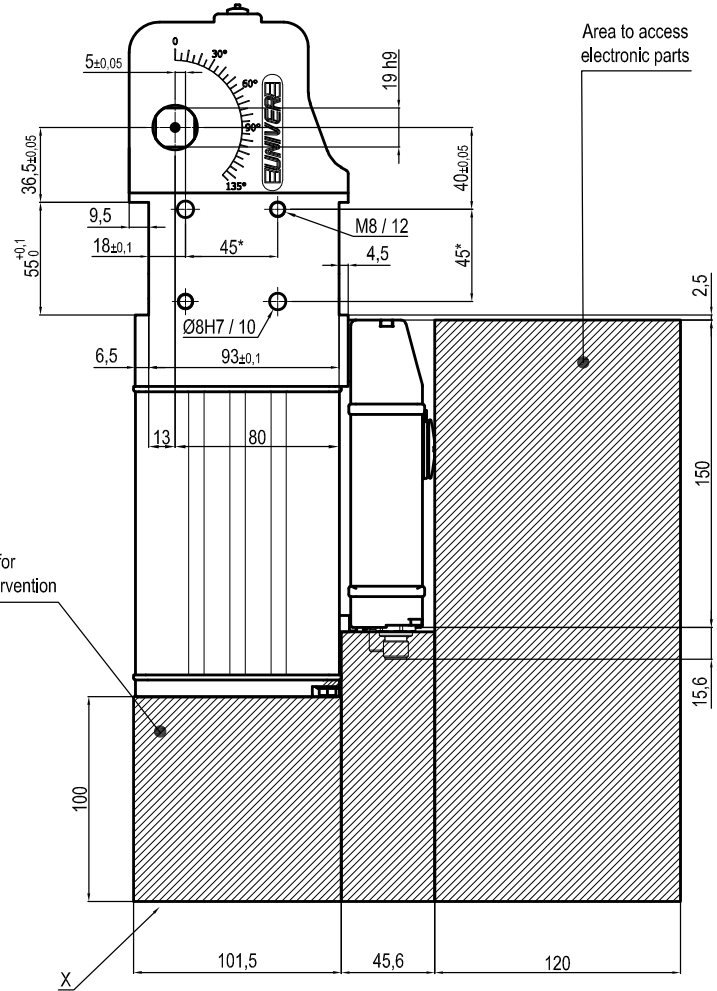
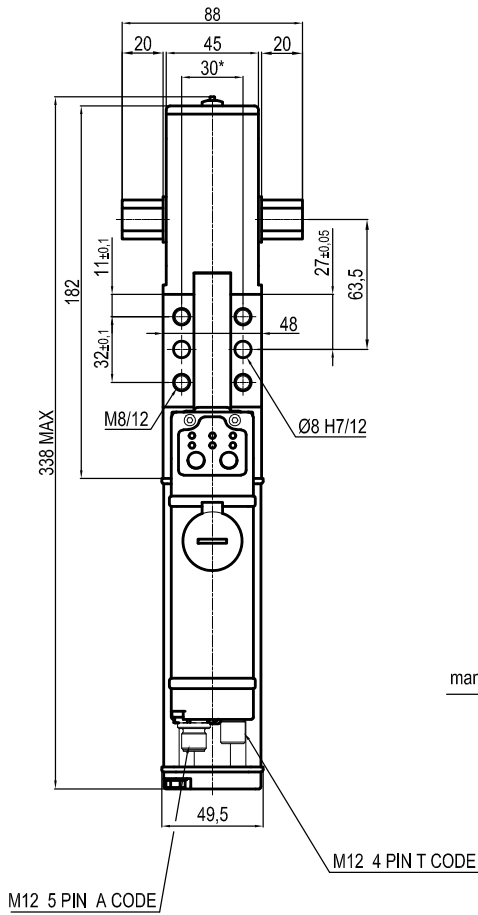
31 = 1 connector M12 4 poles T CODE
 +1 connector M12 5 poles A CODE



| Size | Clamping moment | Closing time** | Weight |
|------|-----------------|----------------|--------|
| 225 | 225 Nm | 1 sec x 90° | 3,4 Kg |

Operating temperature: 5° ÷ 40° C
 Without arm
 IP code: IP 65

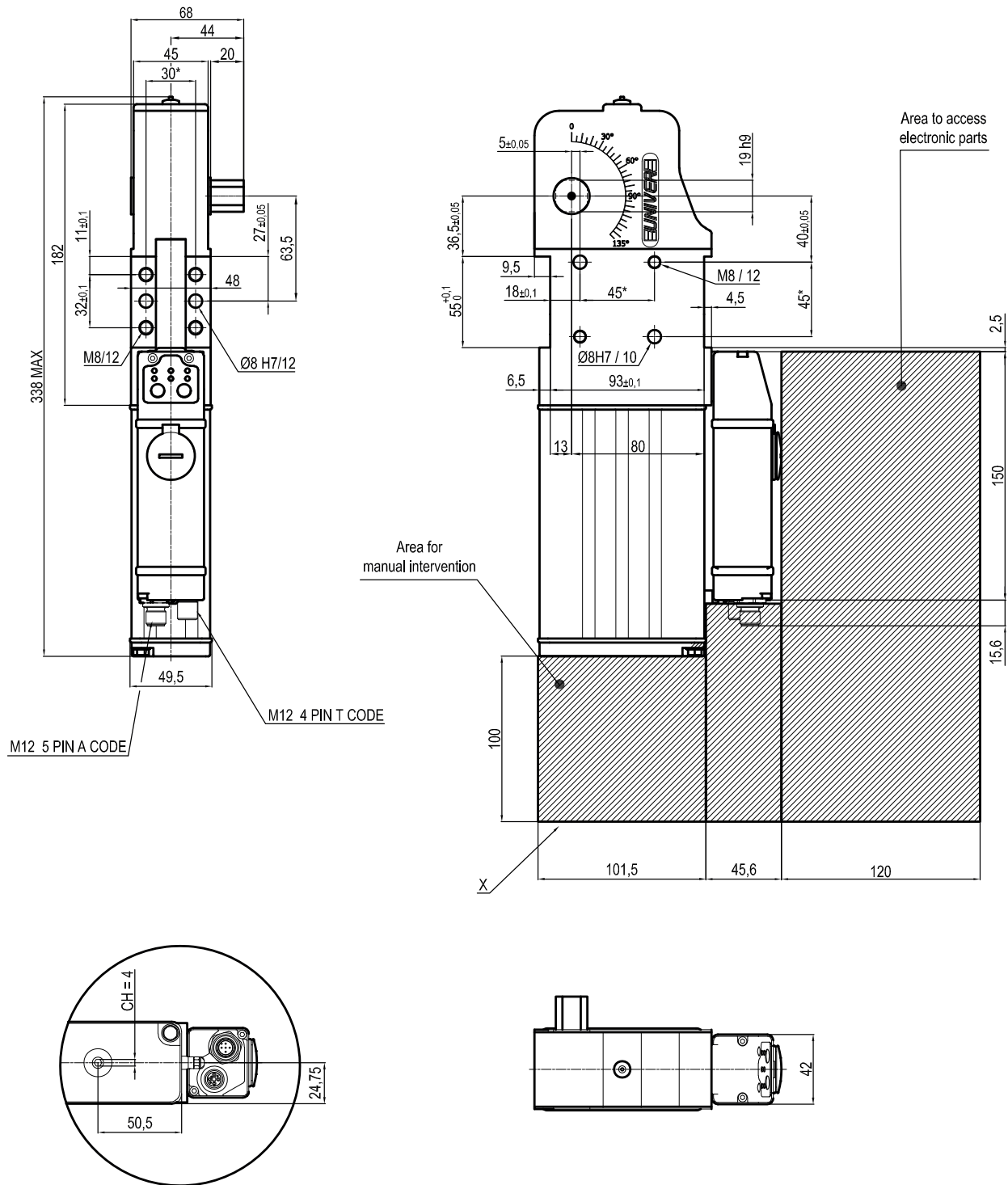
* : TOLERANCE BETWEEN DOWELS ± 0.02, BETWEEN SCREW HOLES ± 0.1
 ** : FOR MORE DETAILS SEE TECHNICAL SPECIFICATIONS



| Size | Clamping moment | Closing time** | Weight |
|------|-----------------|----------------|--------|
| 225 | 225 Nm | 1 sec x 90° | 3,4 Kg |

Operating temperature: 5° ÷ 40° C
 Without arm
 IP code: IP 65

* : TOLERANCE BETWEEN DOWELS ± 0.02, BETWEEN SCREW HOLES ± 0.1
 ** : FOR MORE DETAILS SEE TECHNICAL SPECIFICATIONS



| Size | Clamping moment | Closing time** | Weight |
|------|-----------------|----------------|--------|
| 225 | 225 Nm | 1 sec x 90° | 3,4 Kg |

Operating temperature: 5° ÷ 40° C
 Without arm
 IP code: IP 65

* : TOLERANCE BETWEEN DOWELS ± 0.02, BETWEEN SCREW HOLES ± 0.1
 ** : FOR MORE DETAILS SEE TECHNICAL SPECIFICATIONS