



LGP 32-40

Pneumatic Grippers



NEW

STEPLESS ADJUSTABLE OPENING ANGLE

From 0° to 160°

LIGHT WEIGHT

TOGGLE JOINT MECHANISM

Irreversible movement- without air supply

INTEGRATED COMPENSATION

TWO-SIDED SENSOR MOUNTING POSITION

Left and right side

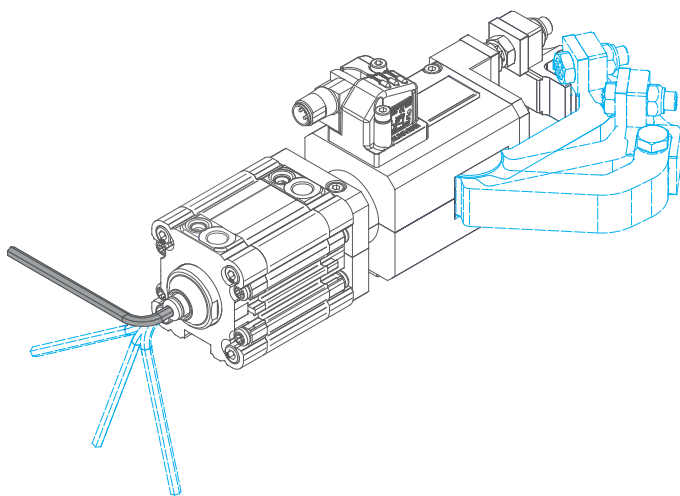
360° ORBITAL ORIENTATION

Unlimited orbital mounting adjustment

INTEGRATED SHOCK ABSORBER DAMPING SYSTEM



STEPLESS ADJUSTABLE OPENING ANGLE

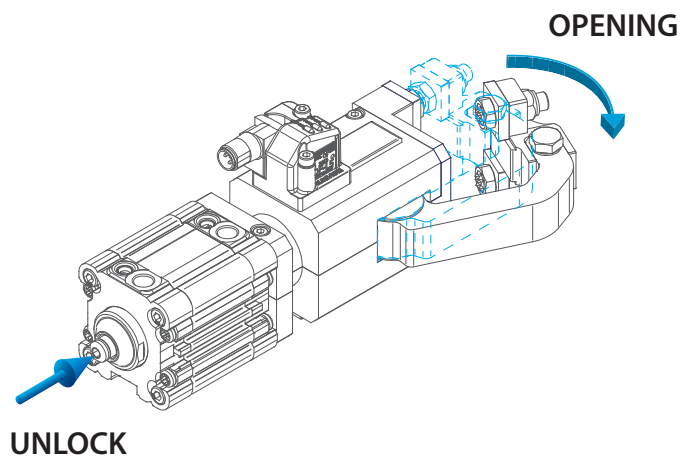


LGP32-40D: from 0° to 160°

LGP32-40S: from 0° to 50°

With an hexagonal Allen wrench

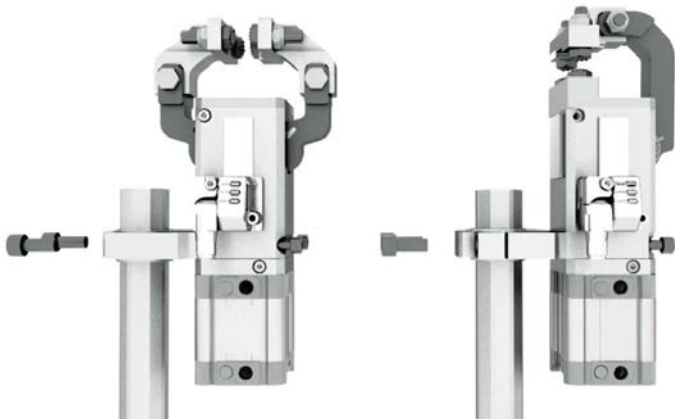
MANUAL RELEASE BUTTON



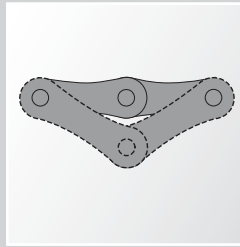
To open the gripper in case of air loss



360° UNLIMITED ORBITAL AND LINEAR ORIENTATION

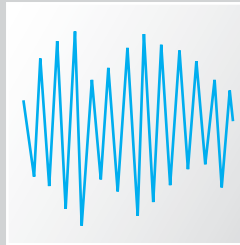


Granting all necessary adjustments to locate the gripper units to the workpiece



Irreversible

Holding the workpiece **tight** in absence of air
(PATENT PENDING)



Safe

Holding the workpiece **steady** even if affected by strong vibrations



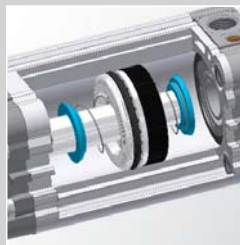
Light Weight

The **lightest** among market equivalent devices



Integrated compensation

Compensating thickness differences **up to 1,5 mm**



Integrated Cushioning

Pneumatic adjustable (standard supplied)



No maintenance required

Granted millions of operations or cycles



PATENT PENDING

LGP 32-40

Pneumatic grippers

- Fully adjustable opening angle
- Unique linkage design ensuring positional repeatability
- Unique all metal sensor with M12 swivel connector
- Integrated compensation
- No maintenance required
- Various mounts available



TECHNICAL CHARACTERISTICS

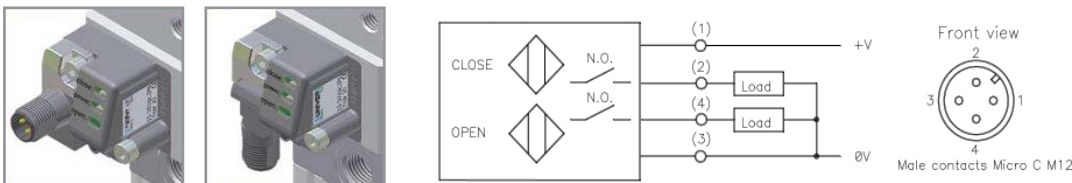
Operating Pressure	0,4 ÷ 0,8 MPa
Operating Temperature	+5 ÷ +45 °C
Pneumatic ports	G 1/8
Opening Angles	SEE EACH DIMENSIONAL DRAWING

Opening angle can be set with or without air pressure

ELECTRICAL CHARACTERISTICS

Supply voltage	10 ÷ 30 Vdc
Supply current without load	< 20 mA
Rated operational current	Max 30 mA
Output Voltage drop	< 3,5 V DC
Output logic	PNP N.O.
Led- supply	green
Led- close position- pin 2	red
Led- open position- pin 4	yellow

How to orientate the connector



CODIFICATION KEY

L	G	P	4	0	D	2	E
1			2		3	4	5

1 Series LGP = Pneumatic grippers	2 Size 32 = 32 mm 40 = 40 mm	3 Head style D = Double jaw opening S = Single jaw opening
---------------------------------------------	-------------------------------------------	-------------------------------------------------------------------------

4 Tips 1 = 1 pair of knurled clamping screws 2 = 2 pairs of knurled clamping screws 3 = 1 pair of adjustable knurled tips 4 = 2 pairs of adjustable knurled tips	5 Sensor mounting E = Electronic sensor with M12 swivel connector sensor mounting position on the right side = ports side S = Electronic sensor with M12 swivel connector sensor mounting position on the left side N = No sensor
-------------------------------------------------------------------------------------------------------------------------------------------------------------------------------------	---------------------------------------------------------------------------------------------------------------------------------------------------------------------------------------------------------------------------------------------------------

MOUNTING ACCESSORIES

■ **GR8LGP32MP**
Middle flange mount



■ **GR8LGP40MP**
Middle flange mount



■ **GR8LGP32M025**
Ø25 Orbital mount
for 360° unlimited
rotation



■ **GR8LGP40M025**
Ø25 Orbital mount
for 360° unlimited
rotation



■ **GR8LGP32M030**
Ø30 Orbital mount for
360° unlimited rotation



■ **GR8LGP40M030**
Ø30 Orbital mount for
360° unlimited rotation



■ **GR8LGP40M045**
Ø45 Orbital mount for
360° unlimited rotation



■ **GR8LGP40AF**
Middle angular mount



■ **GR8LGP40A025**
Ø25 Parallel mount



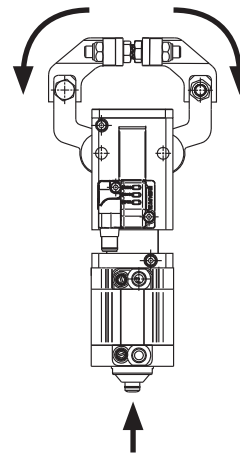
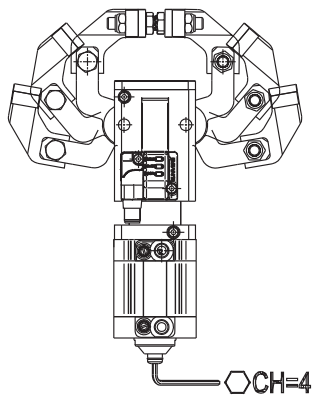
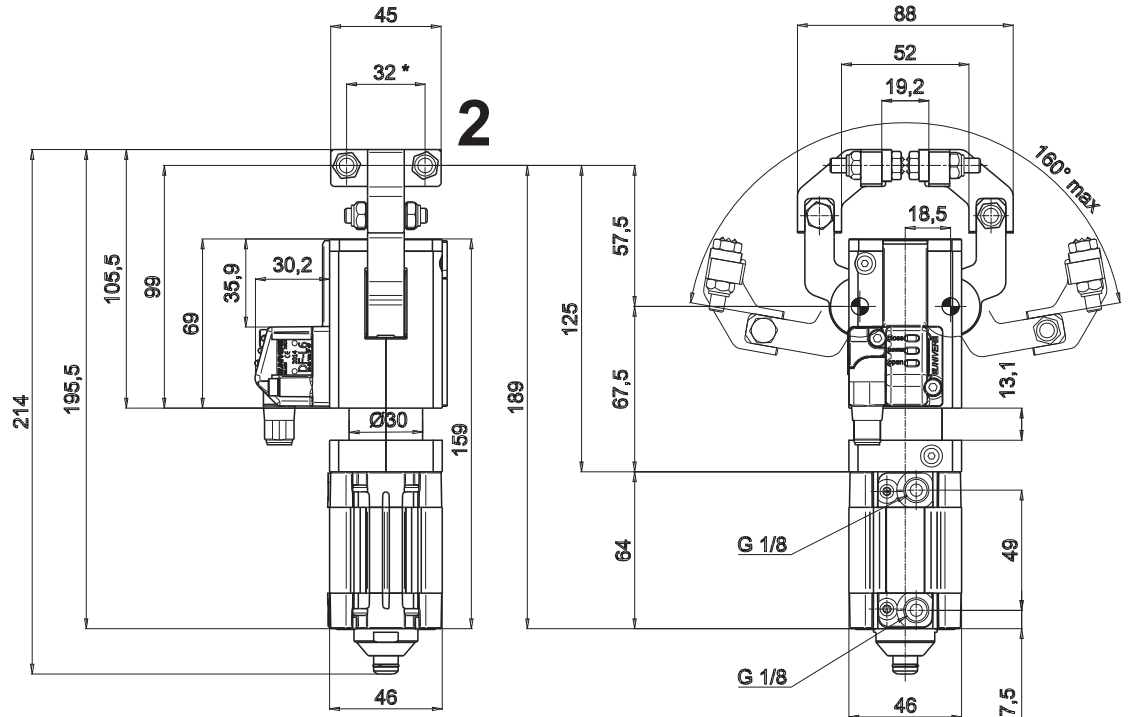
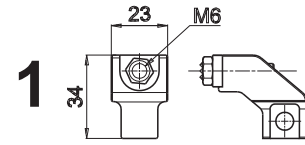
■ **GR8LGP40A030**
Ø30 Parallel mount



■ **GR8LGP40A045**
Ø45 Parallel mount



LGP32D ___ Pneumatic Gripper double jaw opening



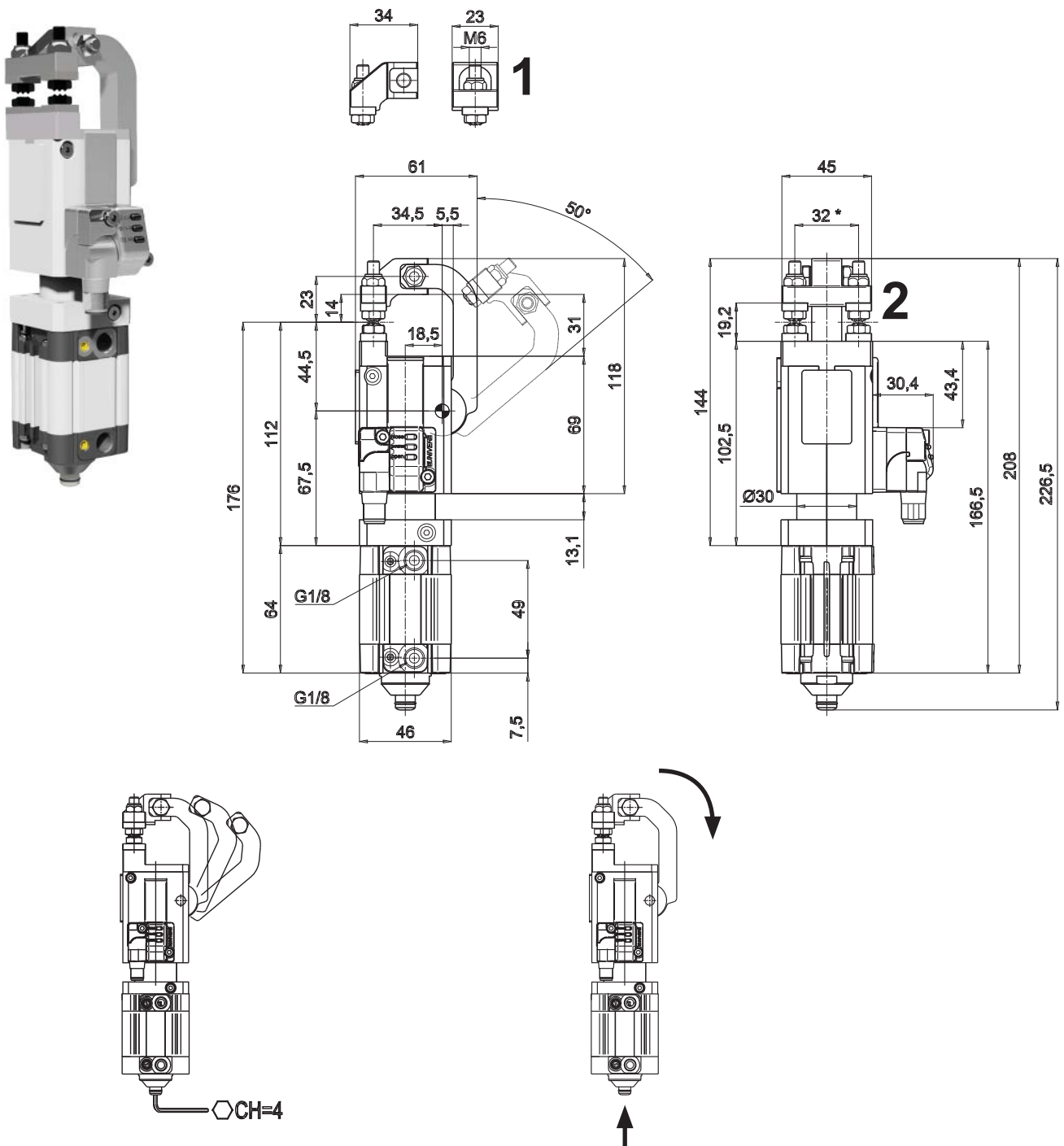
Min./Max operating pressure	0,4/0,8 MPa
Operating temperature	5° ÷ 45° C
Opening angle	adjustable from 10° to 160°
Supply voltage	10 ÷ 30 Vdc
IP code	IP 65

Electronic sensor with M12 swivel connector that can be orientated at 0° or 90°

Ø mm	Holding moment	Clamping force at 5 bar	Weight LGP32D1	Weight LGP32D2
32	150 Nm	350 N	0,93 Kg	0,96 Kg

* = Tolerance between dowels ± 0.02, to screw holes ± 0.1

LGP32S ___ Pneumatic Gripper single jaw opening



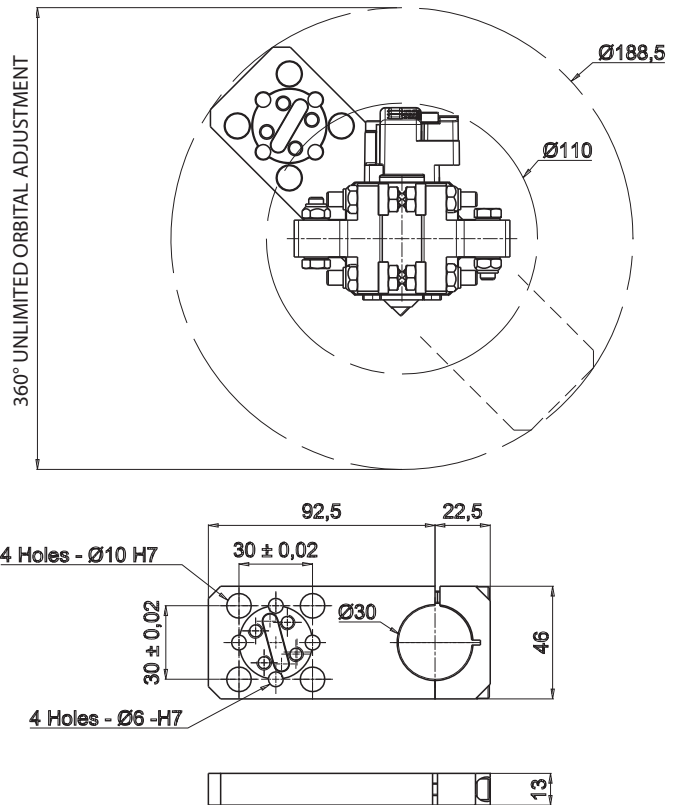
Min./Max operating pressure	0,4/0,8 MPa
Operating temperature	5° ÷ 45° C
Opening angle	adjustable from 10° to 50°
Supply voltage	10 ÷ 30 Vdc
IP code	IP 65

Electronic sensor with M12 swivel connector that can be orientated at 0° or 90°

Ø mm	Holding moment	Clamping force at 5 bar	Weight LGP32S1	Weight LGP32S2
32	150 Nm	600 N	0,9 Kg	0,92 Kg

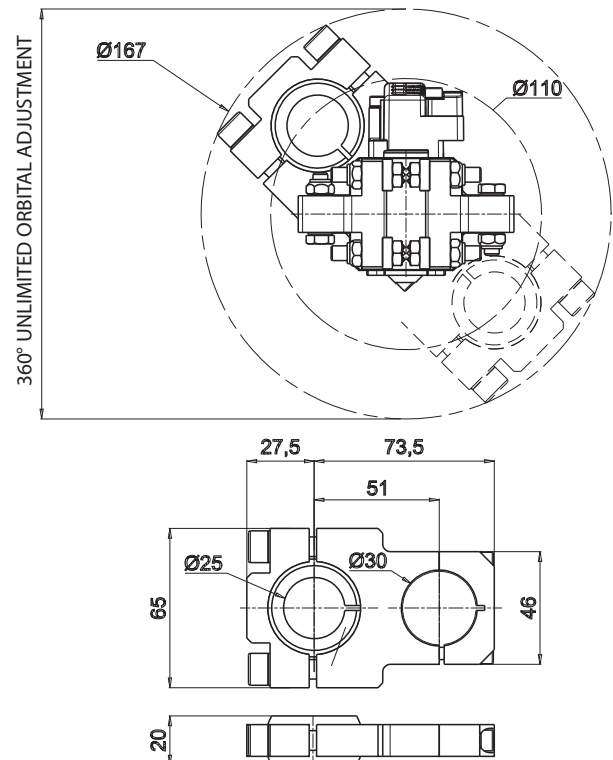
* = Tolerance between dowels ± 0.02, to screw holes ± 0.1

GR8LGP32MP ___ Middle flange mount



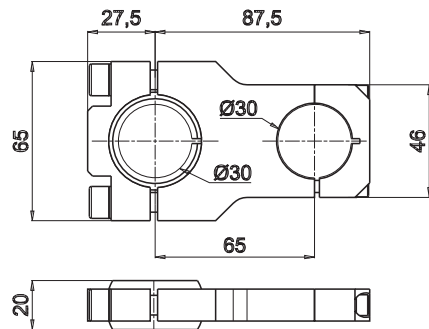
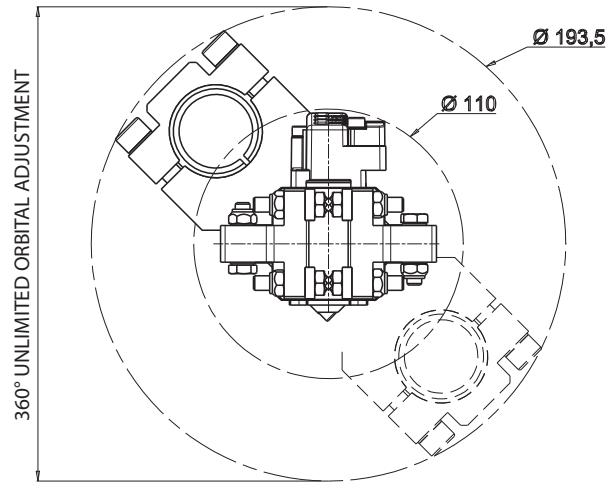
Ø mm	Weight	Material
32	0,15 kg	Aluminium EN AW 2011 T6

GR8LGP32M025 ___ Ø25 Orbital mount for 360° unlimited rotation



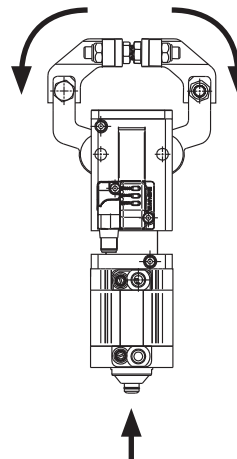
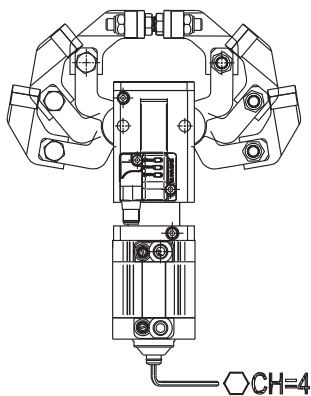
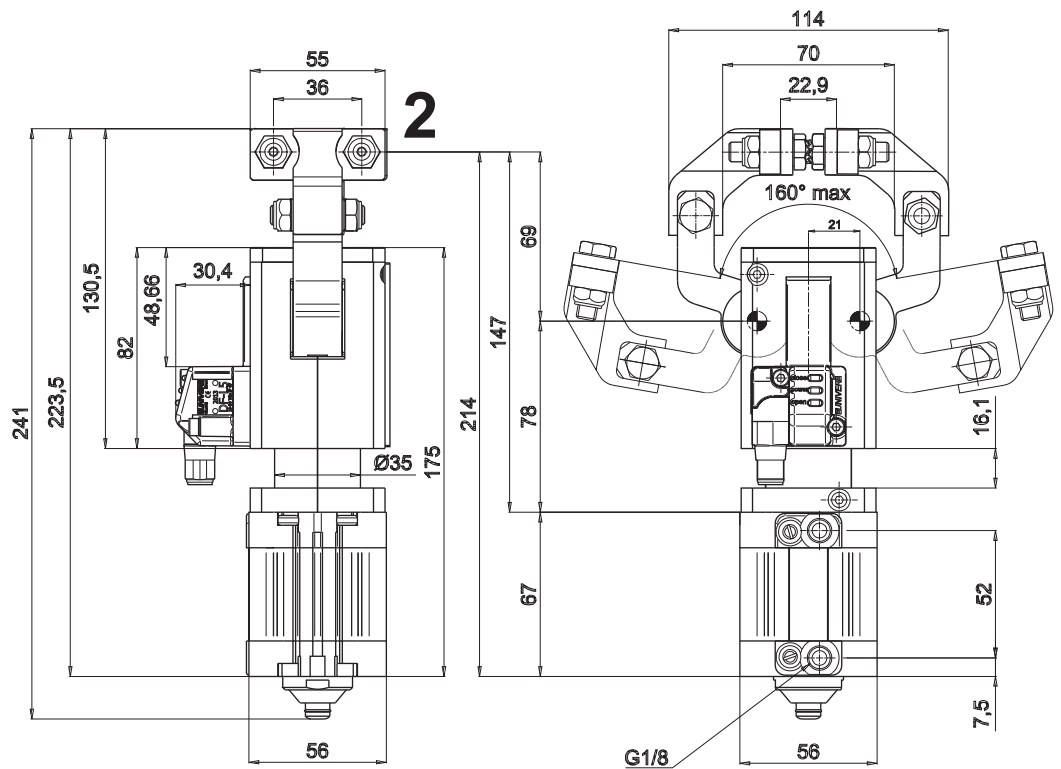
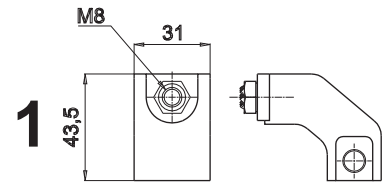
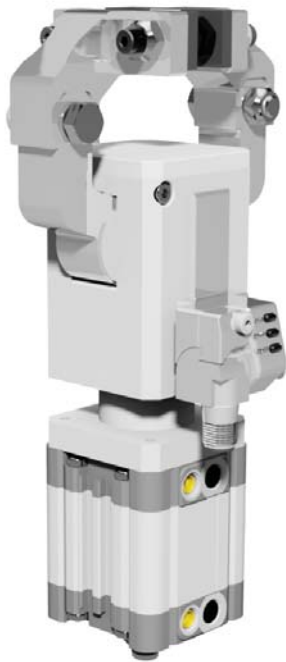
Ø mm	Weight	Material
32	0,2 kg	Aluminium EN AW 2011 T6

GR8LGP32M030 _ _ _ Ø30 Orbital mount for 360° unlimited rotation



Ø mm	Weight	Material
32	0,2 kg	Aluminium EN AW 2011 T6

GR8LGP40D ___ Pneumatic Gripper double jaw opening



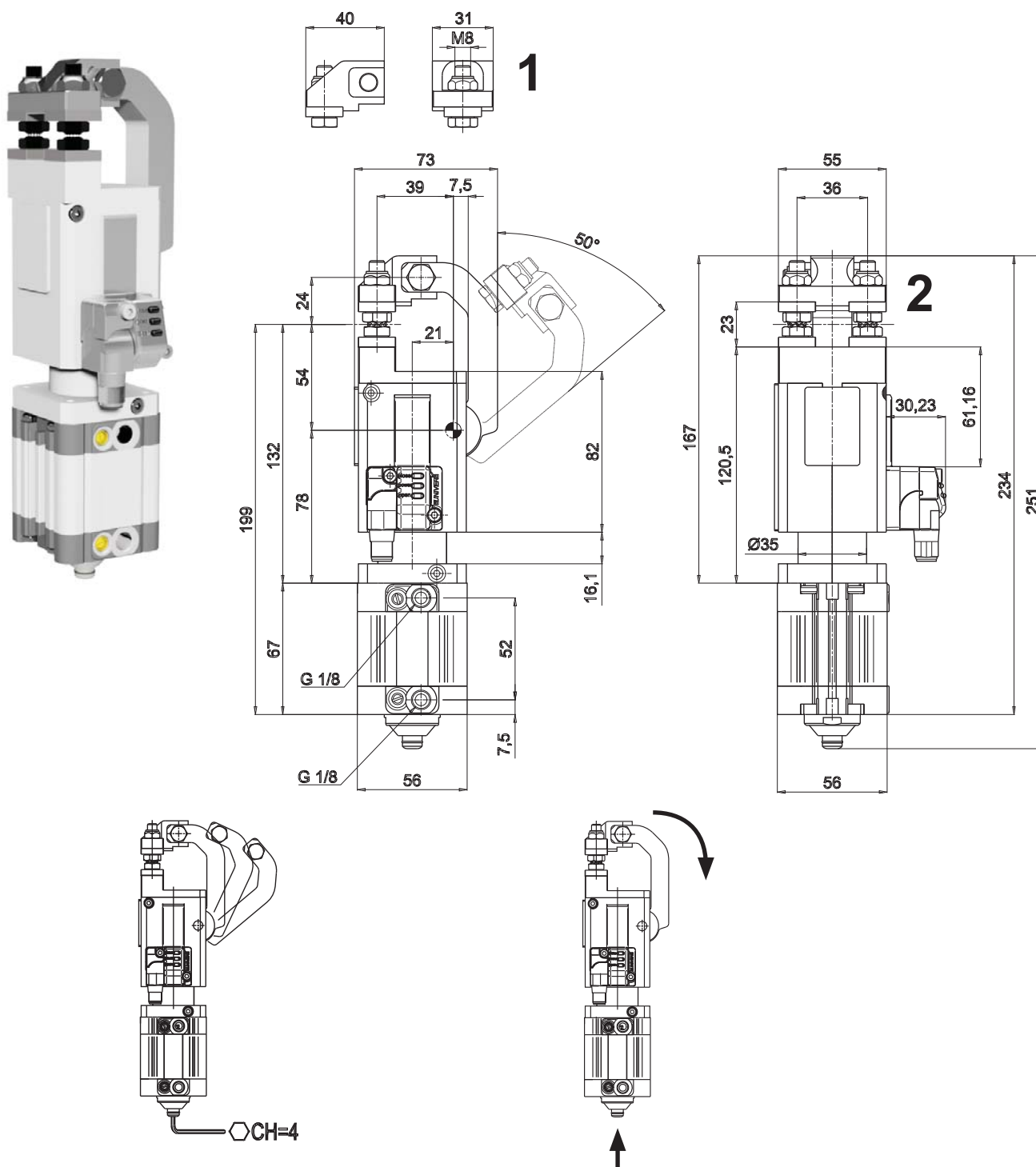
Min./Max operating pressure	0,4/0,8 MPa
Operating temperature	5° ÷ 45° C
Opening angle	adjustable from 10° to 160°
Supply voltage	10 ÷ 30 Vdc
IP code	IP 65

Electronic sensor with M12 swivel connector that can be orientated at 0° or 90°

Ø mm	Holding moment	Clamping force at 5 bar	Weight LGP40D1	Weight LGP40D2
40	800 Nm	800 N	1,68 Kg	1,76 Kg

* = Tolerance between dowels ± 0.02, to screw holes ± 0.1

LGP40S ___ Pneumatic Gripper single jaw opening



Min./Max operating pressure	0,4/0,8 MPa
Operating temperature	5° ÷ 45° C
Opening angle	adjustable from 10° to 50°
Supply voltage	10 ÷ 30 Vdc
IP code	IP 65

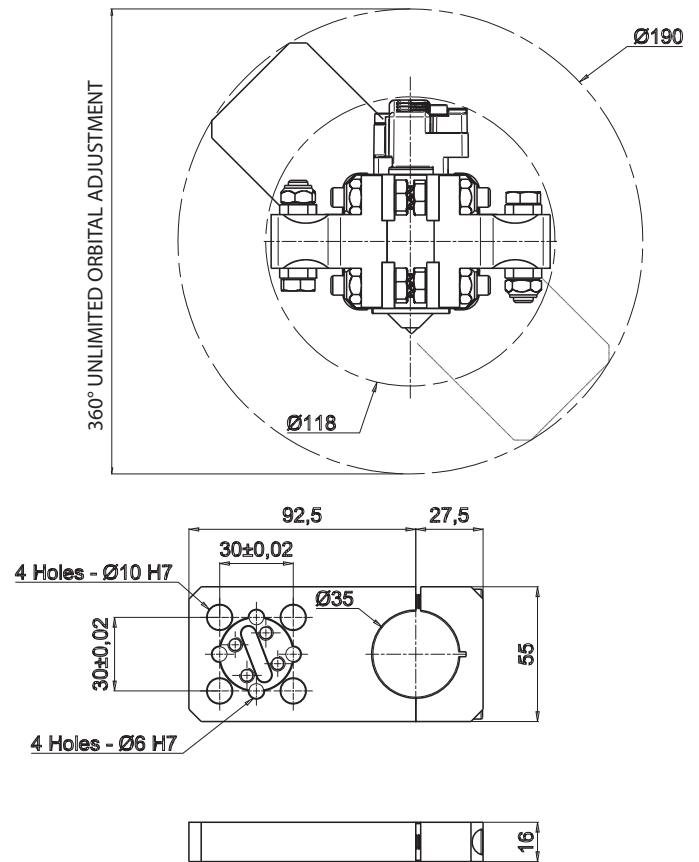
Electronic sensor with M12 swivel connector that can be orientated at 0° or 90°

Ø mm	Holding moment	Clamping force at 5 bar	Weight LGP40S1	Weight LGP40S2
40	800 Nm	1600 N	1,60 Kg	1,65 Kg

* = Tolerance between dowels ± 0.02, to screw holes ±0.1

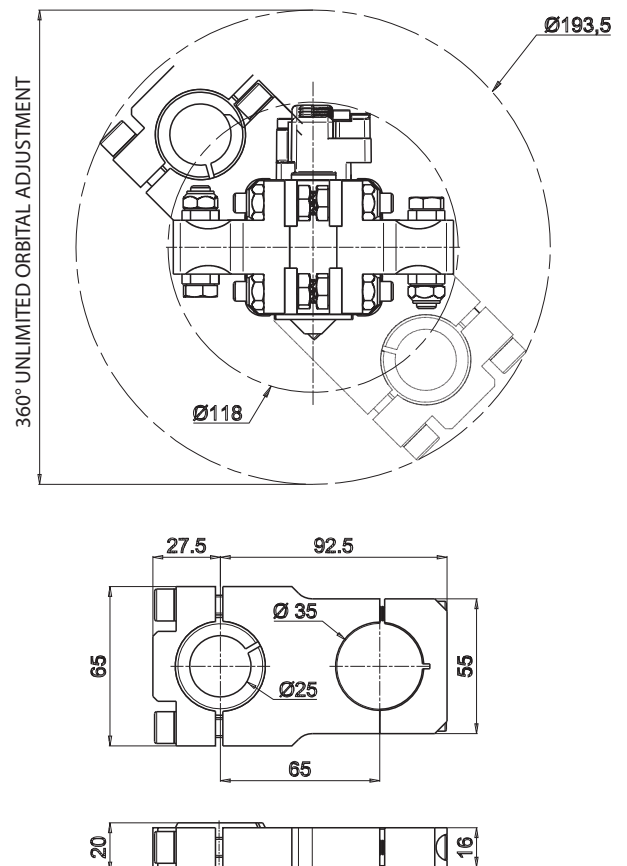
Ø 40

GR8LGP40MP ___ Middle flange mount



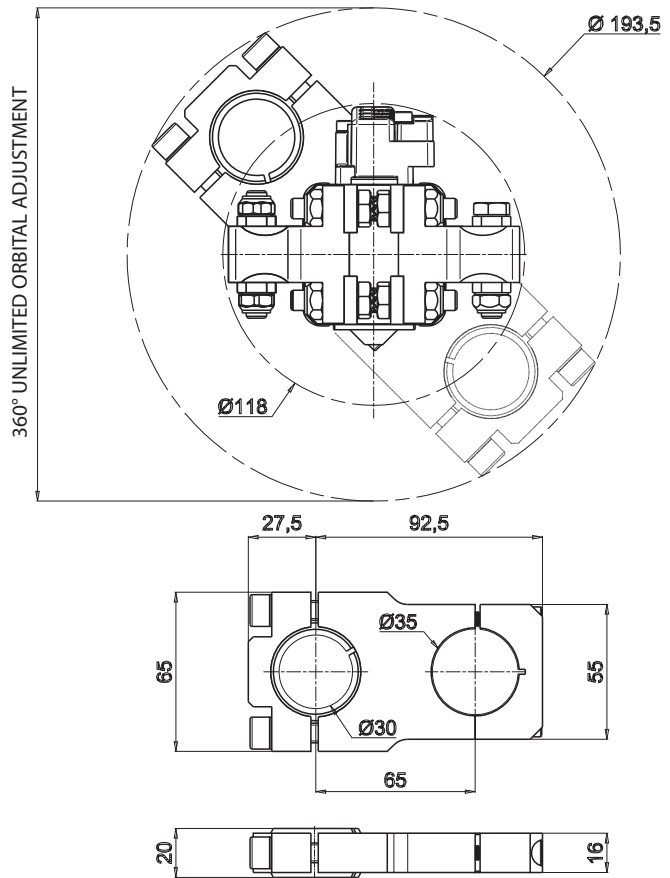
Ø mm	Weight	Material
40	0,2 kg	Aluminium EN AW 2011 T6

GR8LGP40M025 ___ Ø25 Orbital mount for 360° unlimited rotation



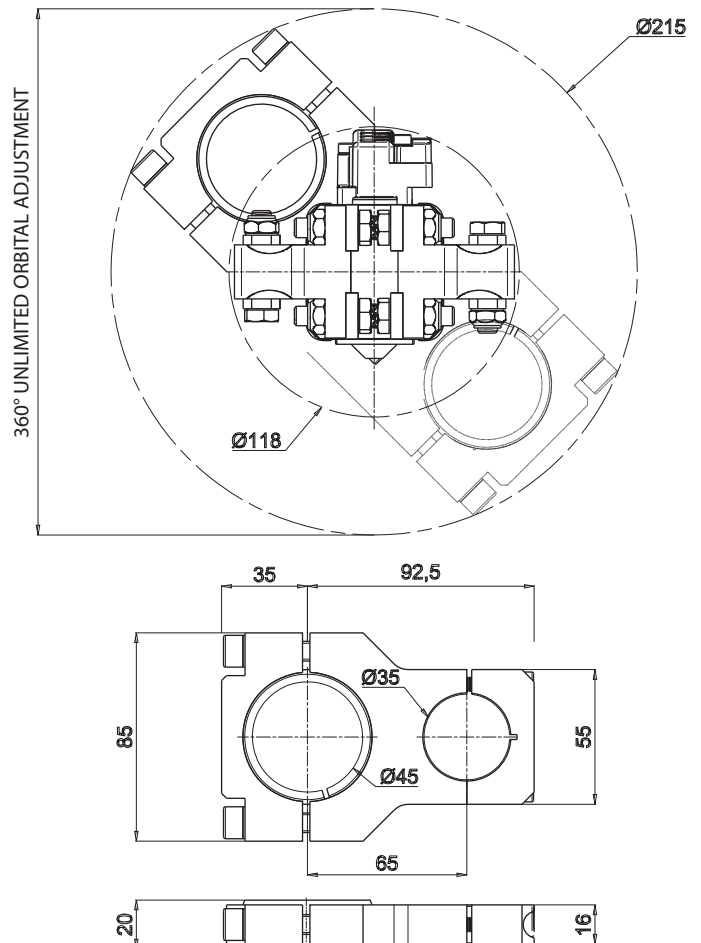
Ø mm	Weight	Material
40	0,3 kg	Aluminium EN AW 2011 T6

GR8LGP40M030 ___ Ø30 Orbital mount for 360° unlimited rotation



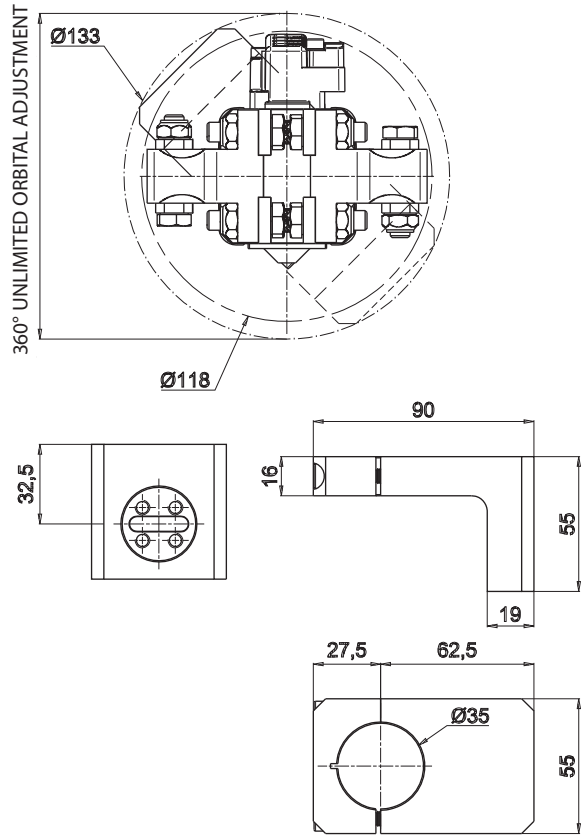
Ø mm	Weight	Material
40	0,3 kg	Aluminium EN AW 2011 T6

GR8LGP40M045 ___ Ø45 Orbital mount for 360° unlimited rotation



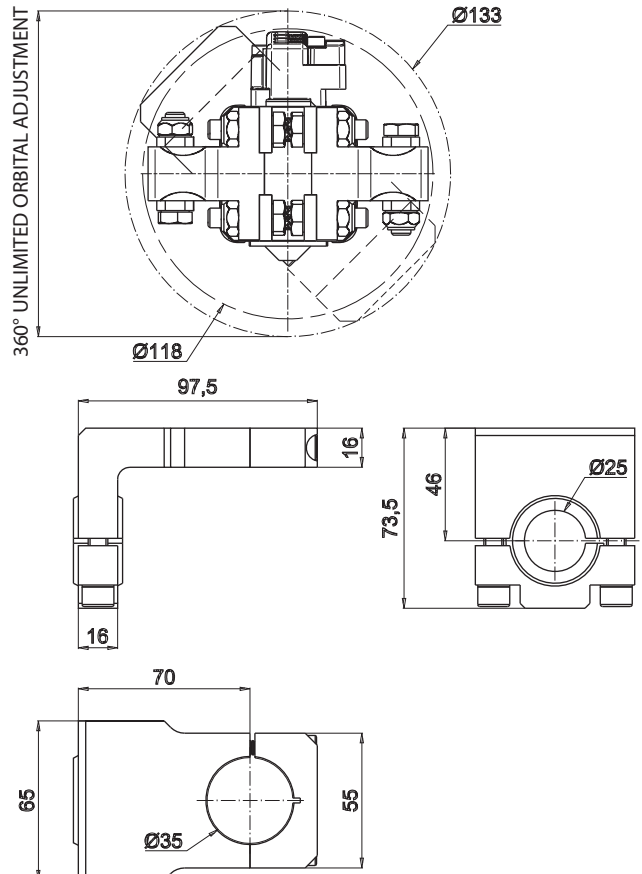
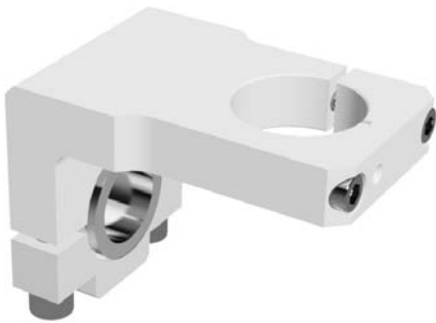
Ø mm	Weight	Material
40	0,3 kg	Aluminium EN AW 2011 T6

GR8LGP40AF ___ Middle angular mount



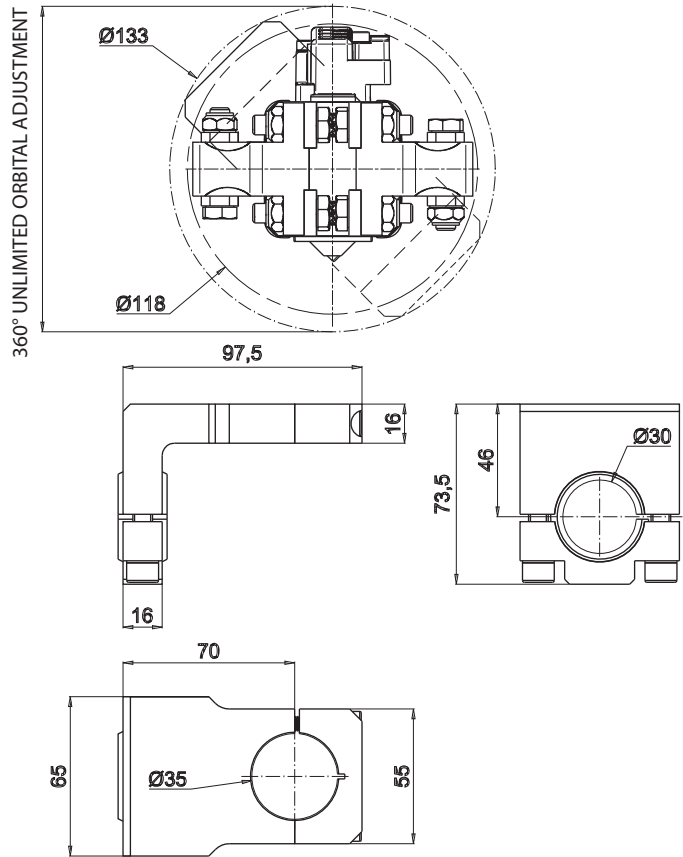
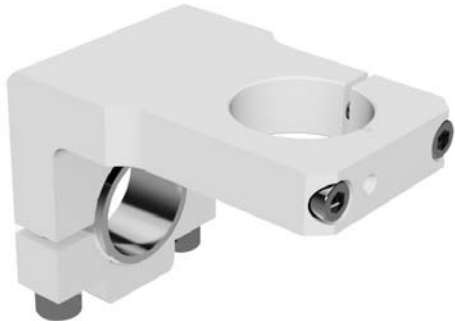
Ø mm	Weight	Material
40	0,25 kg	Aluminium EN AW 2011 T6

GR8LGP40A025 ___ Ø25 Parallel mount



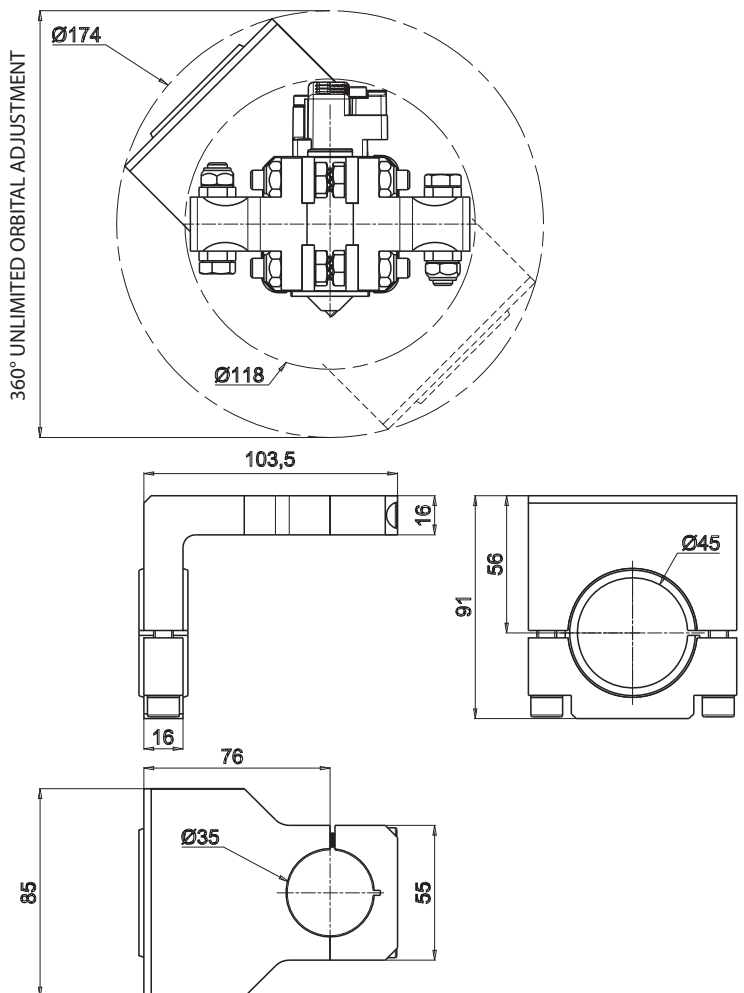
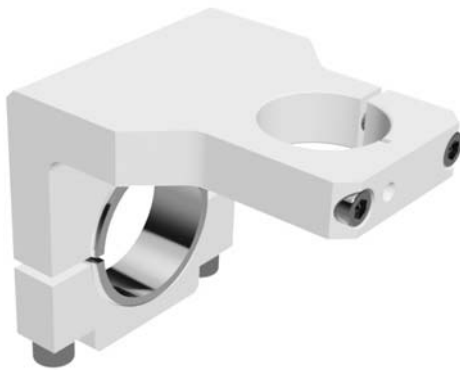
Ø mm	Weight	Material
40	0,25 kg	Aluminium EN AW 2011 T6

GR8LGP40A030 __ _ Ø30 Parallel mount



Ø mm	Weight	Material
40	0,25 kg	Aluminium EN AW 2011 T6

GR8LGP40A045 __ _ Ø45 Parallel mount



Ø mm	Weight	Material
40	0,5 kg	Aluminium EN AW 2011 T6



UNIVER S.p.A.

Headquarters

I - 20128 **Milano**
Via Eraclito, 31
Tel. +39 02 25298.1
Fax +39 02 2575254
info@univer-group.com
www.univer-group.com

UNIVER SERVICE S.r.l.

Headquarters

I - 20128 **Milano**
Via Empedocle, 20
Tel. +39 02 25298.1
Fax +39 02 25298370
universervice@universervice.it
www.universervice.it

Branch Offices

LOMBARDIA

I - 20128 **Milano**
Via Empedocle, 20
Tel. +39 02 25298.1
Fax +39 02 25298370
universervice@universervice.it

I - 24060 Castelli Calepio **Bergamo**
Via C. Curotti, 31/33
Tel. +39 030 7435420
Fax +39 030 733328
castellicalepio@universervice.it

I - 22040 Monguzzo **Como**
Via Valassina, 18
Tel. +39 031 617922
Fax +39 031 651222
monguzzo@universervice.it

PIEMONTE/LIGURIA/VALLE D'AOSTA

I - 10071 Borgaro Torinese **Torino**
Via Veneto, 18
Tel. +39 011 4501871
Fax +39 011 4502898
torino@universervice.it

VENETO/FRIULI VENEZIA-GIULIA TRENTINO-ALTO ADIGE

I - 30030 Vigonovo **Venezia**
Via Prima strada 16/A - Loc. Galta
Tel. +39 049 9834140
Fax +39 049 9833972
vigonovo@universervice.it

EMILIA ROMAGNA

I - 40069 Zola Predosa **Bologna**
Via Guido Rossa, 21
Tel. +39 051 753907
Fax +39 051 6184751
bologna@universervice.it

CENTER/SOUTH

I - 40069 Zola Predosa **Bologna**
Via Guido Rossa, 21
Tel. +39 051 753907
Fax +39 051 6184751
bologna@universervice.it

Univer do Brasil S/A

BRASIL - 13474-764
Americana **São Paulo - SP**
Rua do Polyester, 29
Distrito Industrial Abdo Najar
Tel. +55 19 3113-9400
Fax +55 19 3113-9405
atendimento@univer.com.br

UNIVER FRANCE S.a.s.

FRANCE - 68000
Colmar
1, rue Denis Papin
Tel. +33 03 89210900
Fax +33 03 89216850
info@univer-france.fr

UNIVER G.m.b.H.

GERMANY - D-65428
Rüsselsheim
Eisenstraße 51
Tel. +49 (2208) 9090-1
Fax: +49 (2208) 9090-40
info@univer-gmbh.de

UNIVER NORTH AMERICA

USA - 45445
Shelby Township, MI 48317
Mound Road. Ste. 117
Tel. 1-844-8 UNIVER
Fax 001 248.299.0528
info@univer-group.us

UNIVER Polska Sp. z o.o.

POLAND - 25-663
Kielce
ul. K. Olszewskiego 21E
Tel. +48 41 278 72 53
Fax +48 41 278 72 54
univer@univer-group.pl

UNIVER S.L.

SPAIN - 08210
Barbera Del Valles **Barcelona**
Ronda Industria, 26 - 28
Tel. +34 93 7297360
Fax +34 93 7297380
univer@univerweb.com

Distributors worldwide:

Get in touch with UNIVER Sales Department
or visit our website www.univer-group.com



www.univer-group.com