



LAE225

Electric Power clamps

LAE | 225 | V | C | 31 |

1 2 3 4 5

1 Series

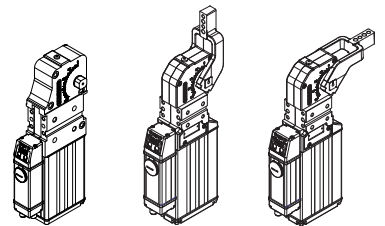
LAE = Electric Power Clamps

2 Size

225 = 225 Nm
Mounting surface
interchangeable with pneumatic
power clamp, Ø50 mm

3 Arm mount position

N = No arm **O** = 180° **V** = 90°

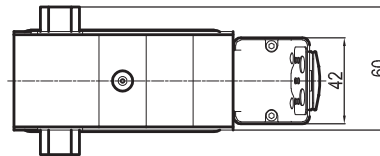
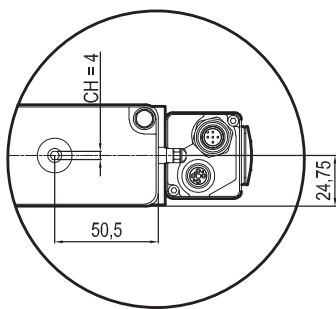
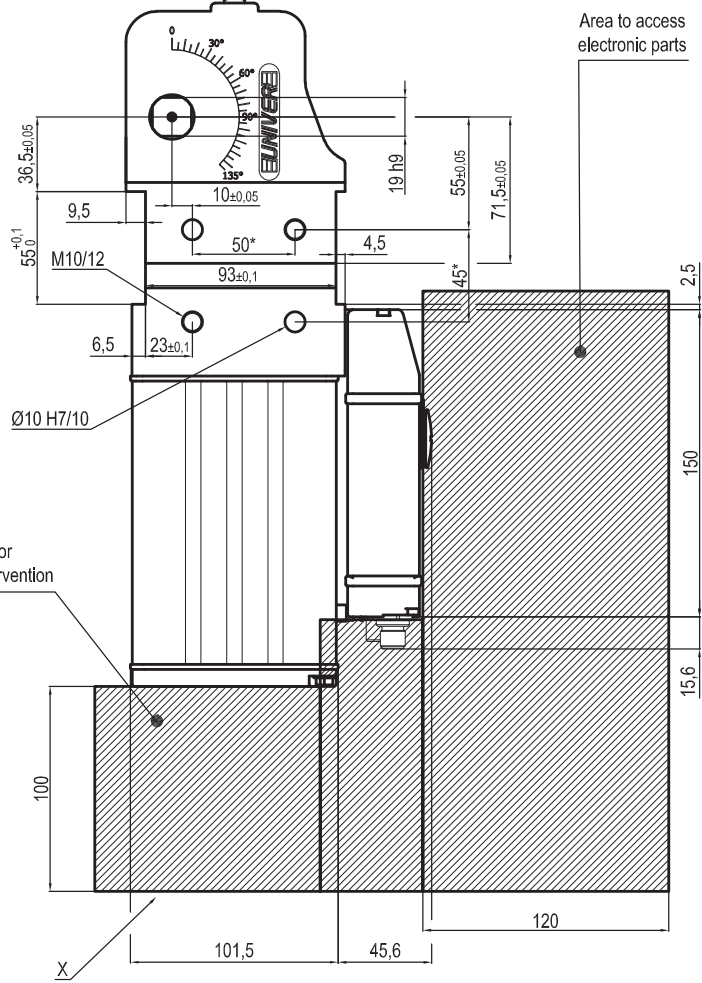
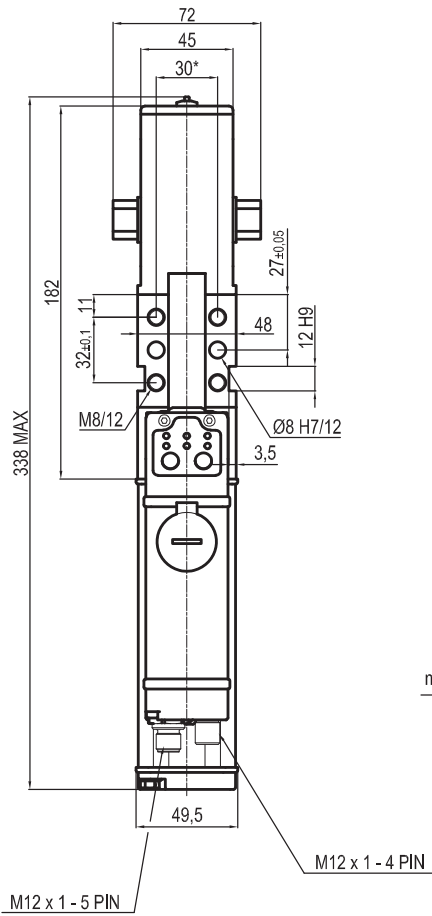


4 Arm style

C = Central , 15 mm offset
D = Right, 15 mm offset
S = Left, 15 mm offset
N = No arm

5 Control unit

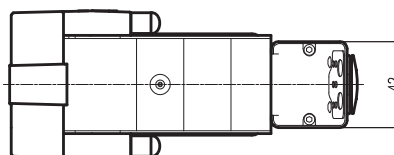
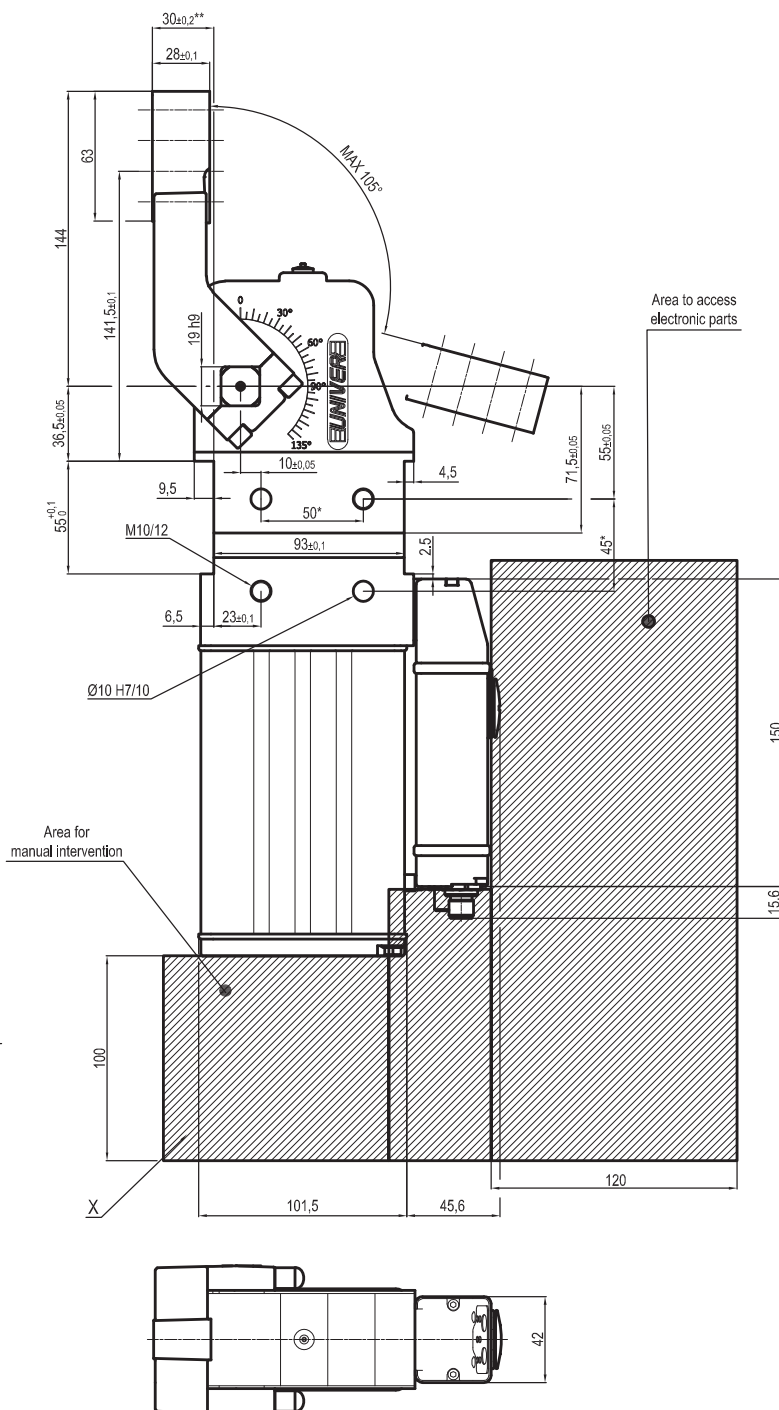
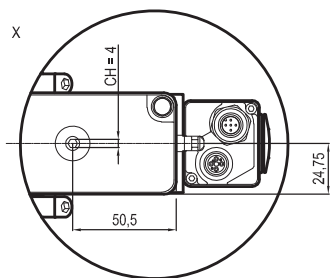
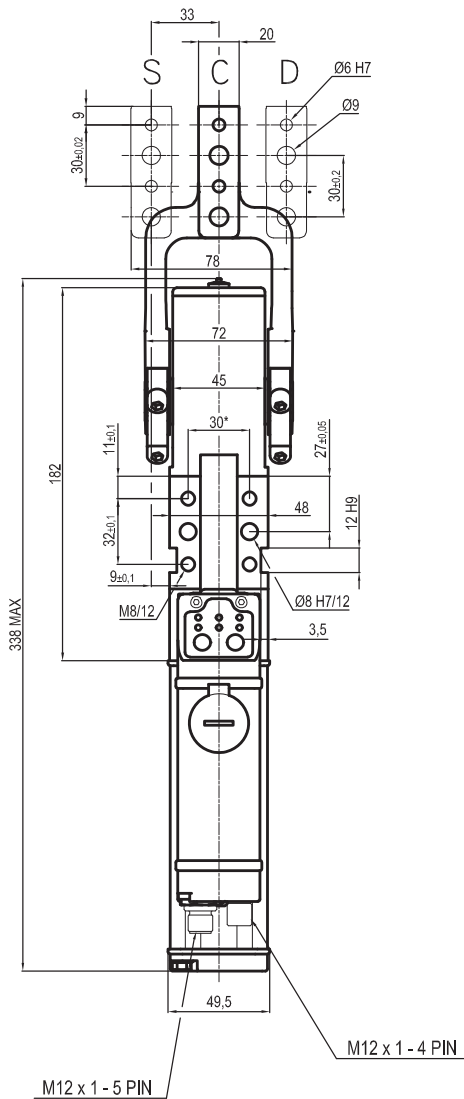
31 = 1 connector M12 4 poles T CODE
+1 connector M12 5 poles A CODE



Size	Clamping moment	Closing time**	Weight
225	225 Nm	1 sec x 90°	4,3 Kg

Operating temperature: 5° ÷ 40° C
 Without arm
 IP code: IP 65

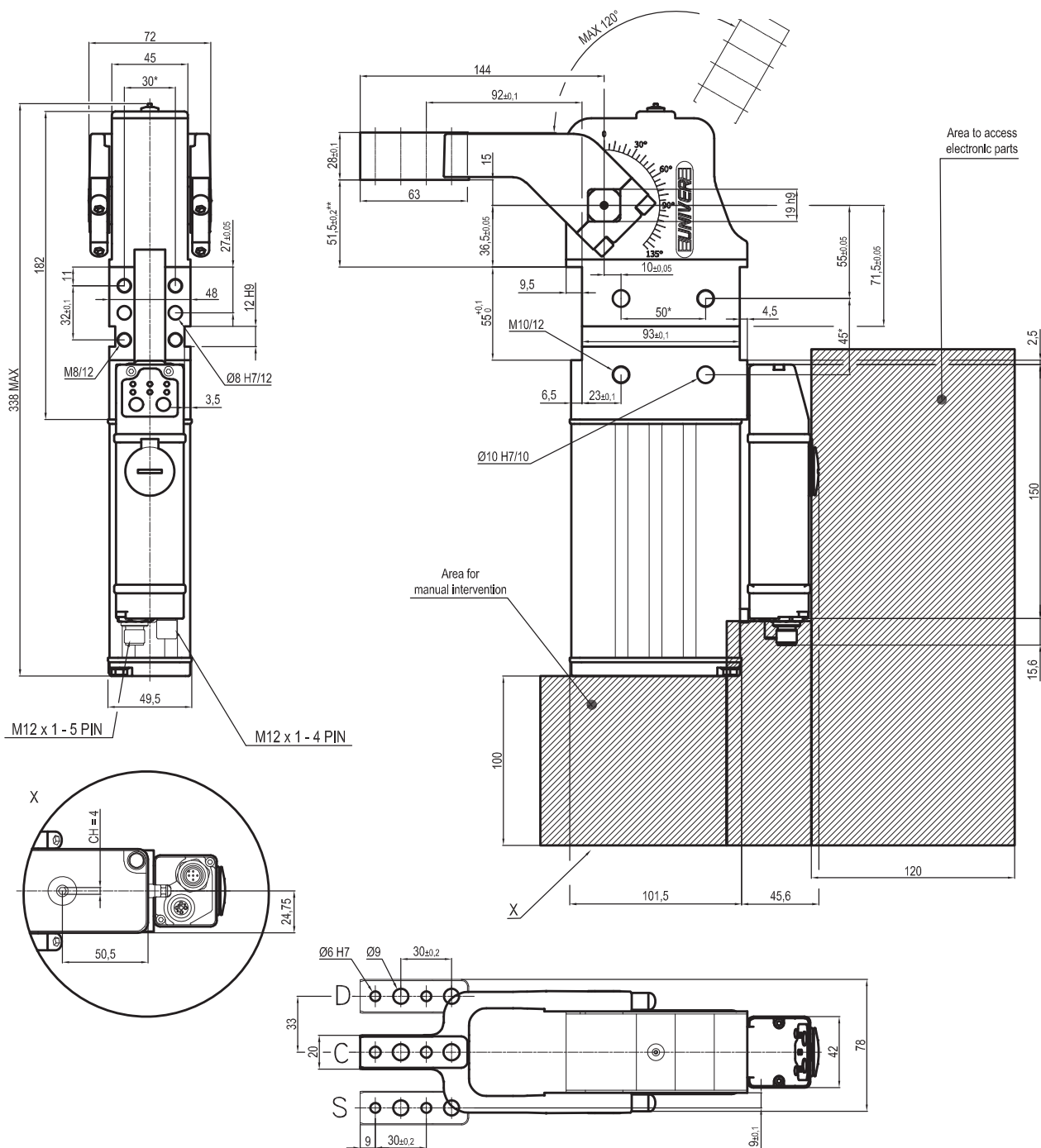
* : TOLERANCE BETWEEN DOWELS ± 0.02, BETWEEN SCREW HOLES ± 0.1
 ** : FOR MORE DETAILS SEE TECHNICAL SPECIFICATIONS



Size	Clamping moment	Closing time**	Weight
225	225 Nm	1 sec x 90°	4,3 Kg

Operating temperature: $5^{\circ} \pm 40^{\circ} \text{C}$
 Opening angle: $105^{\circ} - 90^{\circ} - 75^{\circ} - 60^{\circ} - 45^{\circ} - 30^{\circ} - 15^{\circ}$
 Arm position: 180°
 IP code: **IP 65**

* : TOLERANCE BETWEEN DOWELS ± 0.02 , BETWEEN SCREW HOLES ± 0.1
 ** : FOR MORE DETAILS SEE TECHNICAL SPECIFICATIONS



Size	Clamping moment	Closing time**	Weight
225	225 Nm	1 sec x 90°	4,3 Kg

Operating temperature: $5^{\circ} \div 40^{\circ} \text{C}$
 Opening angle: $120^{\circ} - 105^{\circ} - 90^{\circ} - 75^{\circ} - 60^{\circ} - 45^{\circ} - 30^{\circ} - 15^{\circ}$
 Arm position: 90°
 IP code: **IP 65**

* : TOLERANCE BETWEEN DOWELS ± 0.02 , BETWEEN SCREW HOLES ± 0.1
 ** : FOR MORE DETAILS SEE TECHNICAL SPECIFICATIONS