

L6 - LOCKING UNITS FOR RODLESS CYLINDERS S5 - VL1



Reference Standard

ATEX
2014/34/UE



Pressures

4,5 bar (0.45 MPa)
10 bar (1 MPa)



Temperature

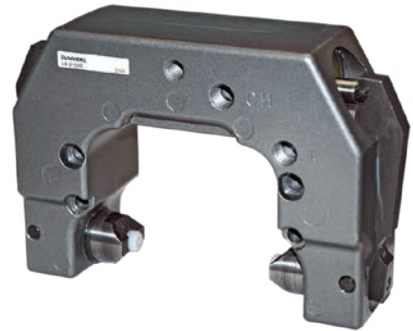
-20 °C
+ 80 °C

CHARACTERISTICS

Fluid	filtered air, with or without lubrication
Body	die-cast aluminium
Seals	NBR
Internal parts	brass/aluminium

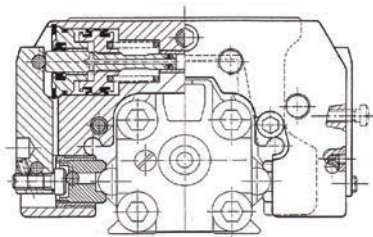
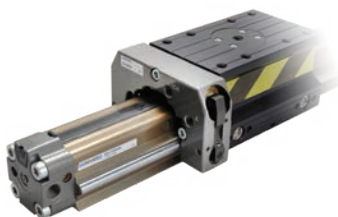
UNIVER Locking Units for rodless cylinders perform the function of keeping the carriage in any intended point of its stroke and allow high locking accuracy.

They can be mounted on both sides of the carriage and the mechanical braking force can be further increased by means of an additional pneumatic override.

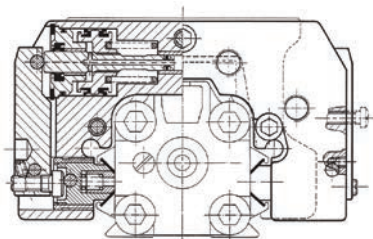


Series	Type	Bore cilindro (mm)
L 6	S 5	0 3 2
L6 Locking Unit	<p>S5 For S5 series rodless cylinder</p> <p>V1 For VL1 series rodless cylinder</p>	<p>025 = Ø25</p> <p>032 = Ø32</p> <p>040 = Ø40</p> <p>050 = Ø50</p>

S5 series with locking unit



VL1 series with locking unit



- Min. release pressure: 4,5 bar
- Able to keep the carriage in position in both directions
- Easy to be mounted on both sides of the carriage
- Permanent manual release by means of 2 screws M5
- Locking performed by mechanical springs in absence of air
- Preset for additional pneumatic override to increase locking force